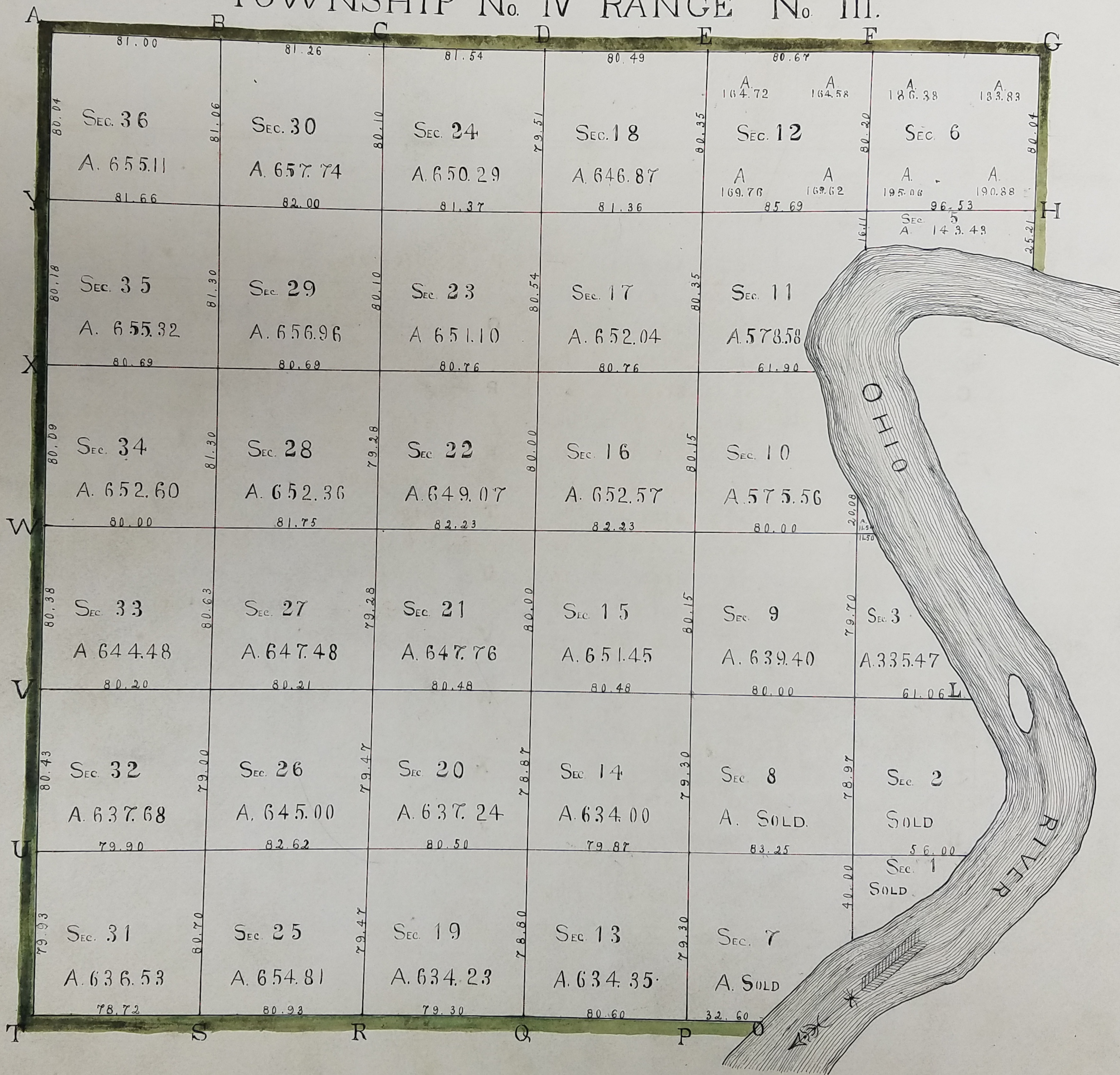


TOWNSHIP No. IV RANGE No. III.



386-12

DESCRIPTION OF TOWNSHIP No. IV RANGE No. III.

POSTS	BEARING TREES	INCHES DIAM.	COURSE THEY BEAR	LINKS DISTANT	POSTS	BEARING TREES	INCHES DIAM.	COURSE THEY BEAR	LINKS DISTANT
A	W. OAK	15	S 50 W	19	P	HICKORY	15	N 59 W	06
	DO	12	N 76 E	13		ROCK OAK	30	S 25 W	26
B	W. OAK	12	S 31 E	40	Q	SUGARTREE	20	S 27 1/2 E	09 1/2
	ROCK OAK	16	N 69 W	10		DO	10	N 45 W	28
C	HICKORY	12	S 78 1/2 W	07 1/2	R	CHESTNUT	24	S 60 E	06
	SUGARTREE	10	S 80 E	08		POPLAR	12	N 30 E	25
D	W. OAK	18	S 39 1/2 W	24	S	W. OAK	30	S 24 W	42
	HICKORY	09	N 59 E	27		HICKORY	12	S 50 E	24
E	B. OAK	30	S 71 1/2 E	10	T	HICKORY	12	N 84 E	12
	W. OAK	16	N 36 W	25		MAPLE	15	S 14 E	30
F	SUGARTREE	12	S 60 W	17	U	B WALNUT	18	N 11 1/2 W	84
	DO	12	N 7 E	15		DO	15	S 81 3/4 E	49
G	BEECH	08	S 24 1/2 W	09	V	B. OAK	27	S 64 E	67
	SUGARTREE	16	N 24 1/2 E	04		BEECH	10	N 63 W	09
H	BEECH	09	N 20 1/2 W	12	W	W. OAK	18	S 85 1/4 W	21
	POPLAR	24	S 33 W	23		DO	10	S 79 E	25
I	SUGARTREE	18	N 89 E	25	X	W. OAK	24	S 50 E	20
	DO	10	S 74 1/2 W	15		DO	15	N 11 E	22
L	FLM	30	S 33 E	39	Y	W. OAK	24	S 9 W	24
	SUGARTREE	15	N 82 1/2 W	34		DO	12	N 57 E	18
O	W. WALNUT	16	S 26 1/2 W	16 1/2					
	DO	18	N 12 W	28					

TOWNSHIP No. IV RANGE No. III CONTINUED
 QUARTER SECTION POSTS DESCRIBED.

QUARTER POSTS	BEARING TREES	INCHES DIAM.	COURSE THEY BEAR	LINKS DISTANT	QUARTER POSTS	BEARING TREES	INCHES DIAM.	COURSE THEY BEAR	LINKS DISTANT	QUARTER POSTS	BEARING TREES	INCHES DIAM.	COURSE THEY BEAR	LINKS DISTANT
1 & 2	ELM	12	EAST	07	13 & 14	W. WALNUT	09	N 85 W	13	25 & 26	SUGARTREE	12	CORNER TREE	
	B. WALNUT	24	N 79 W	25		B. OAK	20	N 20 E	26		-----	---	-----	---
1 & 7	SYCAMORE	30	S 78 W	09	13 & 19	W. OAK	30	S 30 W	23	25 & 31	W. OAK	14	CORNER TREE	
	ELM	08	N 49 E	58		MAPLE	10	N 72 E	20		-----	---	-----	---
2 & 8	BEECH	14	S 42 E	32	14 & 20	W. OAK	30	N 63 E	27	26 & 32	SUGARTREE	08	N 15 W	08
	DO	14	N 32 W	30		CHERRY	24	S 25 E	40		DOGWOOD	06	S 63 E	24
7 & 8	SUGARTREE	14	S 83 W	56	19 & 20	W. WALNUT	10	N 52 W	14	31 & 32	BEECH	08	CORNER TREE	
	HOO PASH	10	N 73 E	22		BEECH	30	S 53 E	26		-----	---	-----	---
3 & 4	SYCAMORE	40	N 4 E	62	15 & 16	B. OAK	10	CORNER TREE		27 & 28	SUGARTREE	08	S 77 E	20
	HOO PASH	14	S 48 E	40		-----	---	-----	---		DO	10	N 83 W	32
3 & 9	BEECH	11	S 4 W	44	15 & 21	W. OAK	18	S 40 E	23	27 & 33	SUGARTREE	05	N 84 E	16
	DO	10	N 4 E	40		W. WALNUT	14	N 16 W	18		DO	05	N 77 W	08
4 & 10	SUGARTREE	16	N 32 E	13	16 & 22	W. OAK	03	S 3 W	31	28 & 34	SYCAMORE	30	N 13 W	72
	DO	30	S 35 W	37		DO	04	S 87 E	10		SUGARTREE	10	S 81 E	28
9 & 10	CHEST. OAK	14	N 59 E	11	21 & 22	B. OAK	20	N 35 E	38	33 & 34	IN A FIELD			
	DO	14	S 22 W	04		DO	08	S 66 W	20		NO BEARING TREES			
5 & 6	BEECH	16	S 18 W	39	17 & 18	W. WALNUT	14	S 62 E	33	29 & 30	HICKORY	14	N 63 W	16
	DO	15	N 50 E	32		SUGARTREE	09	N 28 W	75		DO	08	S 2 1/2 E	33
5 & 11	SUGARTREE	^{16 OR} 29.0 H10	CORNER TREE		17 & 23	W. OAK	15	S 9 E	25	29 & 35	POPLAR	10	N 59 W	23
	-----	---	-----	---		DO	12	N 30 E	14		ELM	08	S 33 E	25
6 & 12	SUGARTREE	13	N 40 E	05	18 & 24	SUGARTREE	14	N 9 E	25	30 & 36	BEECH	12	N 23 E	20
	DO	15	S 27 W	45		LINN	24	S 57 W	50		DO	12	S 5 W	38
11 & 12	RED OAK	22	S 38 W	25	23 & 24	SUGARTREE	10	N 22 W	02	35 & 36	SUGARTREE	14	S 84 W	21
	B. OAK	17	N 72 E	20		RED OAK	15	S 14 W	20		DOGWOOD	05	N 52 E	18

TOWNSHIP No. IV RANGE No. III CONTINUED
INTERIOR SECTION CORNERS DESCRIBED.

SECTION CORNERS	BEARING TREES	INCHES DIAM.	COURSE THEY BEAR	LINKS DISTANT	SECTION CORNERS	BEARING TREES	INCHES DIAM.	COURSE THEY BEAR	LINKS DISTANT		
7 13	8 14	B. OAK	10	N 75 W	03	10 11	B. LOCUST	14	S 1 E	18	
		HICKORY	12	S 85 E	06		SUGARTREE	15	N 24 W	06	
8 14	9 15	W. OAK	15	S 21 E	12	16 22	17 23	SUGARTREE	12	N 67.25 W	53
		DO	12	N 22 E	38		DO	15	S 28 E	05	
9 15	10 16	W. OAK	10	N 86 W	25	28 34	29 35	ROCK OAK	12	S 52 W	19
		ROCK OAK	24	N 65 E	17		DO	09	N 25 W	10	
10 16	11 17	SUGARTREE	09	S 19 W	22	1 7	2 8	ELM	18	S 76 W	49
		HICKORY	12	N 1 1/2 E	26		W. WALNUT	10	S 86 E	56	
11 17	12 18	SUGARTREE	18	S 22 E	20	3 9	4 10	W. OAK	13	S 43 E	38
		DO	18	N 16 1/2 W	28		B. OAK	36	N 38 W	47	
19 25	20 26	SUGARTREE	09	N 26 W	16	5 11	6 12	BEECH	10	S 76 E	10
		DO	10	N 82 E	33		DO	10	S 24 W	09	
20 26	21 27	SUGARTREE	18	N 7 1/2 W	04	13 19	14 20	W. OAK	12	S 39 E	07
		DO	15	S 35 E	35		BEECH	10	S 76 W	14	
21 27	22 28	W. OAK	15	S 23 W	28	15 21	16 22	HICKORY	09	S 38 W	06
		W. ASH	27	N 40 1/2 E	29		BEECH	10	N 26 W	15	
22 28	23 29	W. OAK	20	N 82 E	06	17 23	18 24	ELM	10	S 75 E	50
		BEECH	06	S 31 1/2 W	29		DO	15	N 61 W	75	
23 29	24 30	B. OAK	27	S 30 1/2 W	06	25 31	26 32	BEECH	14	N 48 E	07
		BEECH	12	N 25 E	26		SUGARTREE	16	S 36 E	30	
2 8	3 9	POPLAR	15	S 29 1/2 W	37	27 33	28 34	W. WALNUT	08	N 62 E	06
		BEECH	08	N 43 E	24		W. ASH	10	S 5 W	25	
14 20	15 21	B. OAK	08	N 68 W	16	29 35	30 36	SUGARTREE	12	S 66 E	14
		SASSAFRAS	07	S 68 1/2 E	15		W. ASH	09	N 12 W	26	
26 32	27 33	W. OAK	18	S 59 W	38	1 OHIO	2 2	ELM	24	N 65 W	30
		LINN	15	N 26 1/2 E	06		SUGARTREE	12	S 9 W	10	

(EXAMINED AND COMPARED)

TRUE COPY
FROM THE ORIGINAL
JOSEPH WOOD REG.

A TRUE COPY
BY
JOHN A. BOND
© 1894.