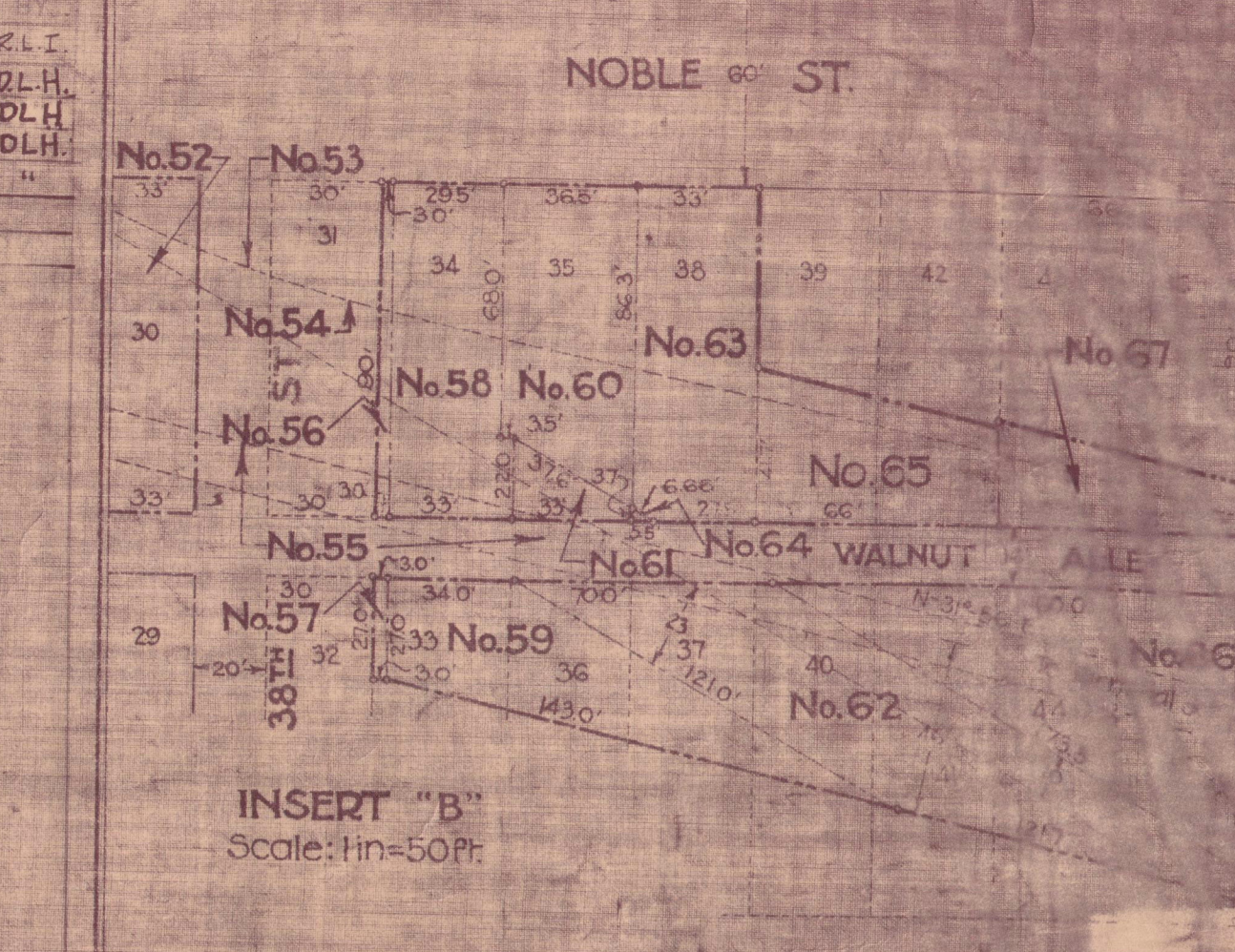
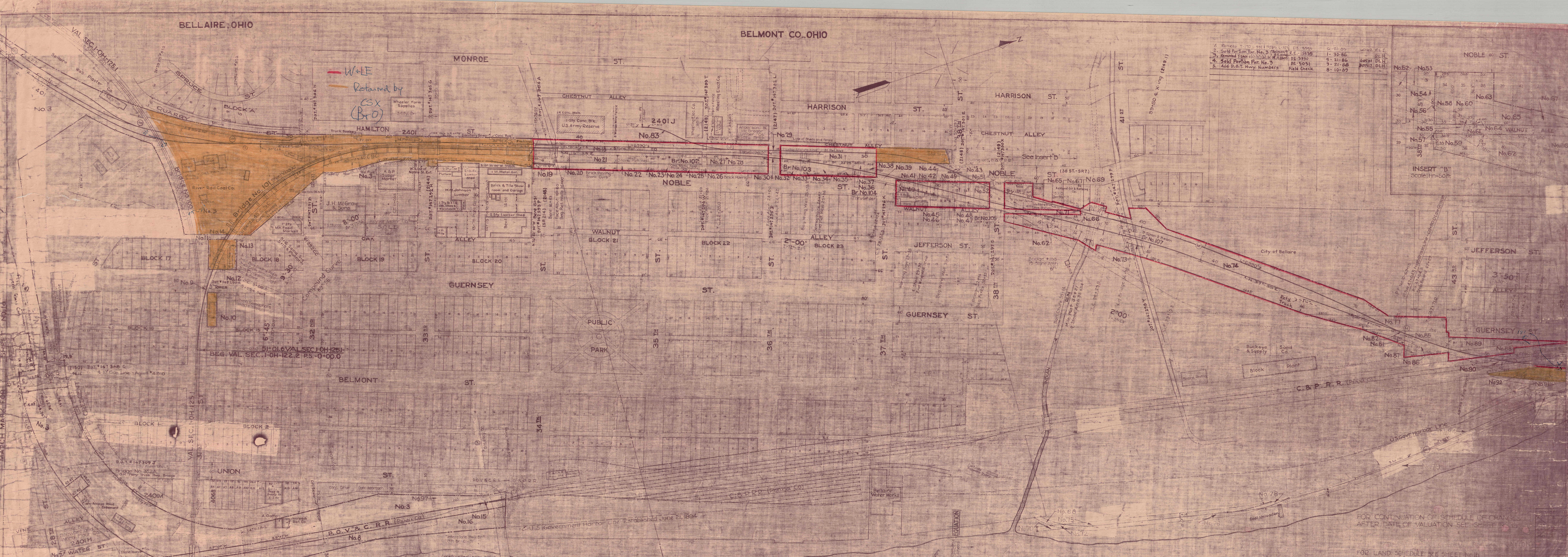


BELLAIRE, OHIO

BELMONT CO., OHIO

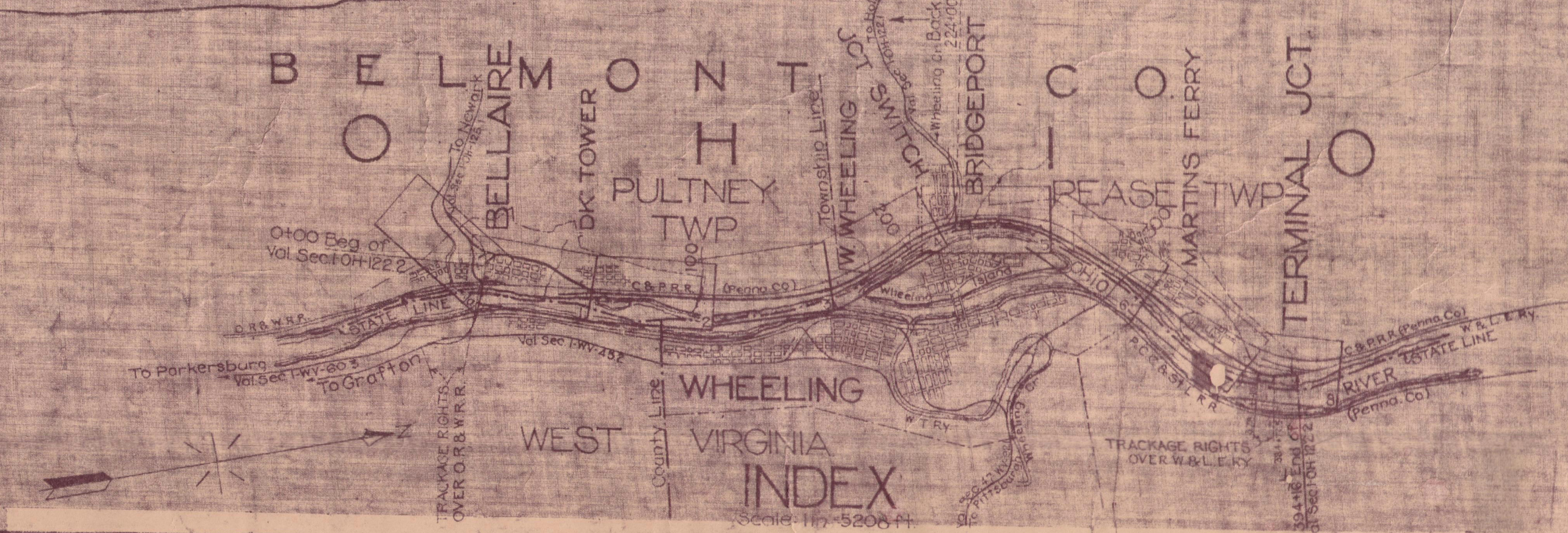
1. Retained - No. 1, 2, 3, 4, 5, 6, 7, 8, 9, 10, 11, 12, 13, 14, 15, 16, 17, 18, 19, 20, 21, 22, 23, 24, 25, 26, 27, 28, 29, 30, 31, 32, 33, 34, 35, 36, 37, 38, 39, 40, 41, 42, 43, 44, 45, 46, 47, 48, 49, 50, 51, 52, 53, 54, 55, 56, 57, 58, 59, 60, 61, 62, 63, 64, 65, 66, 67, 68, 69, 70, 71, 72, 73, 74, 75, 76, 77, 78, 79, 80, 81, 82, 83, 84, 85, 86, 87, 88, 89, 90, 91, 92, 93, 94, 95, 96, 97, 98, 99, 100.  
 2. Removed - No. 1, 2, 3, 4, 5, 6, 7, 8, 9, 10, 11, 12, 13, 14, 15, 16, 17, 18, 19, 20, 21, 22, 23, 24, 25, 26, 27, 28, 29, 30, 31, 32, 33, 34, 35, 36, 37, 38, 39, 40, 41, 42, 43, 44, 45, 46, 47, 48, 49, 50, 51, 52, 53, 54, 55, 56, 57, 58, 59, 60, 61, 62, 63, 64, 65, 66, 67, 68, 69, 70, 71, 72, 73, 74, 75, 76, 77, 78, 79, 80, 81, 82, 83, 84, 85, 86, 87, 88, 89, 90, 91, 92, 93, 94, 95, 96, 97, 98, 99, 100.  
 3. Sold - No. 1, 2, 3, 4, 5, 6, 7, 8, 9, 10, 11, 12, 13, 14, 15, 16, 17, 18, 19, 20, 21, 22, 23, 24, 25, 26, 27, 28, 29, 30, 31, 32, 33, 34, 35, 36, 37, 38, 39, 40, 41, 42, 43, 44, 45, 46, 47, 48, 49, 50, 51, 52, 53, 54, 55, 56, 57, 58, 59, 60, 61, 62, 63, 64, 65, 66, 67, 68, 69, 70, 71, 72, 73, 74, 75, 76, 77, 78, 79, 80, 81, 82, 83, 84, 85, 86, 87, 88, 89, 90, 91, 92, 93, 94, 95, 96, 97, 98, 99, 100.  
 4. Sold - No. 1, 2, 3, 4, 5, 6, 7, 8, 9, 10, 11, 12, 13, 14, 15, 16, 17, 18, 19, 20, 21, 22, 23, 24, 25, 26, 27, 28, 29, 30, 31, 32, 33, 34, 35, 36, 37, 38, 39, 40, 41, 42, 43, 44, 45, 46, 47, 48, 49, 50, 51, 52, 53, 54, 55, 56, 57, 58, 59, 60, 61, 62, 63, 64, 65, 66, 67, 68, 69, 70, 71, 72, 73, 74, 75, 76, 77, 78, 79, 80, 81, 82, 83, 84, 85, 86, 87, 88, 89, 90, 91, 92, 93, 94, 95, 96, 97, 98, 99, 100.  
 5. Add S.O.T. Hwy. Numbers - No. 1, 2, 3, 4, 5, 6, 7, 8, 9, 10, 11, 12, 13, 14, 15, 16, 17, 18, 19, 20, 21, 22, 23, 24, 25, 26, 27, 28, 29, 30, 31, 32, 33, 34, 35, 36, 37, 38, 39, 40, 41, 42, 43, 44, 45, 46, 47, 48, 49, 50, 51, 52, 53, 54, 55, 56, 57, 58, 59, 60, 61, 62, 63, 64, 65, 66, 67, 68, 69, 70, 71, 72, 73, 74, 75, 76, 77, 78, 79, 80, 81, 82, 83, 84, 85, 86, 87, 88, 89, 90, 91, 92, 93, 94, 95, 96, 97, 98, 99, 100.

W+IE  
 Returned by  
 (CSX Bro)



AUTHORITY	DATE INSTALLED OR DETIRED	DESCRIPTION
C-1535 A.P.E. 2466	Installed Dec. 30, 1921	Construction of track 2401 ft. L-450 ft. to serve Eastern Ohio Feed and Supply Co. Boat Station 3749.
C-1539 A.P.E. 2541	Retained Dec. 3, 1921	Installation of 40' long beam on opposite side of track 2401 ft. L-450 ft. to serve Eastern Ohio Feed and Supply Co. Boat Station 3749.
C-20615 A.P.E. 2449	Retained Dec. 3, 1921	Installation of 241 ft. long beam on opposite side of track 2401 ft. L-450 ft. to serve Eastern Ohio Feed and Supply Co. Boat Station 3749.

AUTHORITY	DATE INSTALLED OR DETIRED	DESCRIPTION
C-1142 A.P.E. 220	Retained June 21, 1894	Track 2401 ft. L-450 ft. at station 24-43.5, reworked and extended to serve Eastern Ohio Feed and Supply Co. Boat Station 3749.
C-1142 A.P.E. 220	Retained June 21, 1894	Installation of 40' long beam on opposite side of track 2401 ft. L-450 ft. to serve Eastern Ohio Feed and Supply Co. Boat Station 3749.
C-2189 A.P.E. 3100	Installed January 24, 1924	Installation of a 241 ft. long beam on opposite side of track 2401 ft. L-450 ft. to serve Eastern Ohio Feed and Supply Co. Boat Station 3749.



FOR CONTINUATION OF SCHEDULE OF CHANGES AFTER DATE OF VALUATION SEE SHEET NO. 10

FOR LAND SCHEDULE SEE SHEET NO. 10

**RIGHT-OF-WAY AND TRACK MAP**  
**THE BALTIMORE AND OHIO RAILROAD COMPANY**  
 OPERATED BY  
**THE BALTIMORE AND OHIO RAILROAD COMPANY**  
 MONONGAH DIVISION RIVER BRANCH

STATION 01-00 TO STATION 52-00  
 SCALE: 1 IN = 100 FT. JUNE 30, 1918

OFFICE OF VALUATION ENGINEER BALTIMORE, MD.

State of Maryland  
 City of Baltimore  
 I, the undersigned, of the Baltimore & Ohio Railroad Company do hereby certify that this is a true and correct copy of the original map and schedule of changes as shown on sheet No. 10 of the valuation map of the Baltimore & Ohio Railroad Company, River Branch, State of Maryland, for the year 1918.  
 J. J. [Signature]  
 Valuation Engineer

104-122-244

122