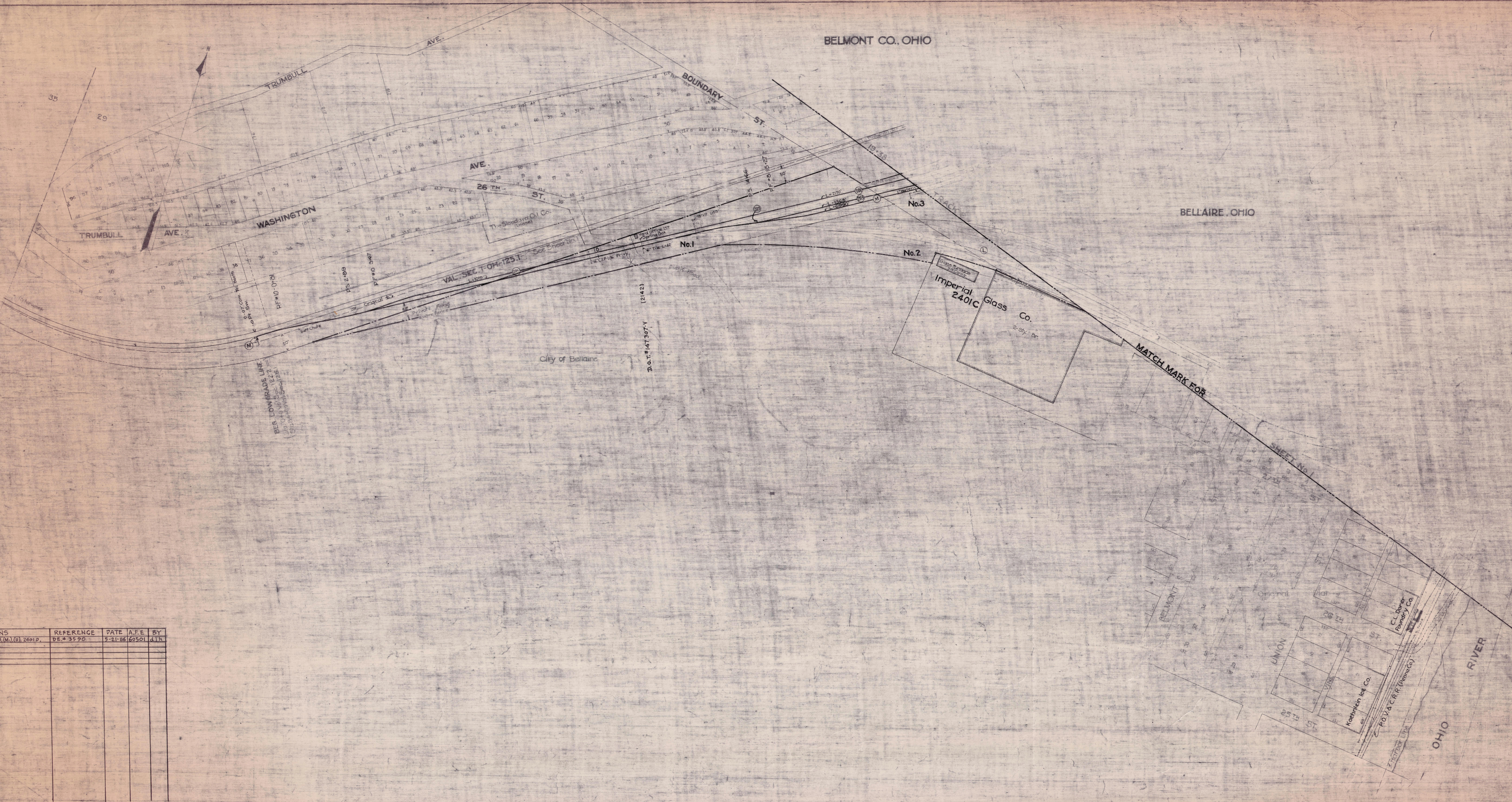


BELMONT CO., OHIO

BELLAIRE, OHIO



AUTHORITY	DATE INSTALLED OR RETIRED	DESCRIPTION
C-24656 A.F.E. 7003	Installed Sept. 11, 1924	Assessment for part cost of 120' of 15" concrete paving on 29th St. between Belmont St. and Cherry Alley, abutting on Parcel No. 3 to left of station 0+00
C-2399 A.F.E. 6189	Completed May 16, 1926	Track 204, P.S. in track M of station 15+96, was shortened 288' at stub end and old clinder pit removed. Stub end of track was then shifted making track straight and part of old rail changed to 100 lb. rail. New length 702'. A new 40" x 6" clinder pit was constructed under track 204 opposite station 15+04. (Track M), including 1" water line extending from pit to present 1/2" water line opposite station 25+00 (Track M).
C-23926 A.F.E. 6696	Completed Mar. 17, 1925	Acquisition of outstanding interest in Parcel No. 6, opposite station 36+50. No change in Valuation Units. See 940 C-1869. For description see Land Schedule.
C-23541 A.F.E. 9670	Retired Dec. 22, 1925	Sale of portion of Parcels No. 5 and 15 on station 54+80. For description see Land Schedule. "Notes A" and "B". Also acquisition of Parcel 37.
C-23887 A.F.E. 9659	Installed July 9, 1926	Installation of company 900' to right of station 34+50 for use of trainmen.
C-23692 A.F.E. 11855	Completed May 1924	Miscellaneous changes, Bellaire, O.
C-23642 A.F.E. 11824	Installed Oct. 17, 1927	siding for Standard Oil Co., sta 59+54.0.
C-23687 A.F.E. 12195	Completed Sep. 30, 1927	Replacement Bridges 3, 4 and Carnegie Mill, sta 58+50 to 240+00 (1).
C-23631 A.F.E. 12497	Consummated Sep. 21, 1927	Sale of Dwellings, sta 55+80 to 58+00 (Low Grade Line).
C-23109 A.F.E. 2544	Retired May 2, 1927	Retirement of Transfer Crane, sta 26+00 (T.M.)
C-14718 A.F.E. 16462	Retired Dec. 31, 1926	Retirement of double dwelling No 421-425 Oak Alley, sta 3+70.
C-23250 A.F.E. 14551	Completed Feb. 1924	Indian Run Sewer, sta 35+54.

REVISIONS	REFERENCE	DATE	A.F.E.	BY
1	DE-3390	5-31-28	66501	A.T.

REVISED TO
1928
1929
1930
1931
1932
1933
1934
1935
1936
1937
1938
1939
1940
1941
1942
1943
1944
1945
1946
1947
1948
1949
1950
1951
1952
1953
1954
1955
1956
1957
1958
1959
1960
1961
1962
1963
1964
1965
1966
1967
1968
1969
1970
1971
1972
1973
1974
1975
1976
1977
1978
1979
1980
1981
1982
1983
1984
1985
1986
1987
1988
1989
1990
1991
1992
1993
1994
1995
1996
1997
1998
1999
2000
2001
2002
2003
2004
2005
2006
2007
2008
2009
2010
2011
2012
2013
2014
2015
2016
2017
2018
2019
2020
2021
2022
2023
2024
2025
2026
2027
2028
2029
2030
2031
2032
2033
2034
2035
2036
2037
2038
2039
2040
2041
2042
2043
2044
2045
2046
2047
2048
2049
2050

RECORD OF CHANGES AFTER DATE OF VALUATION

SUPPLEMENTAL SHEET

THE BALTIMORE AND OHIO RAILROAD COMPANY
OPERATED BY
THE BALTIMORE AND OHIO RAILROAD COMPANY
MONONGAH DIVISION RIVER BRANCH

STATION 2+00 TO STATION 3+00
SCALE: 1" IN = 100 FT. JUNE 30, 1918
OFFICE OF VALUATION ENGINEER
BALTIMORE, MD.

V-1222
1a

OH-1222-11