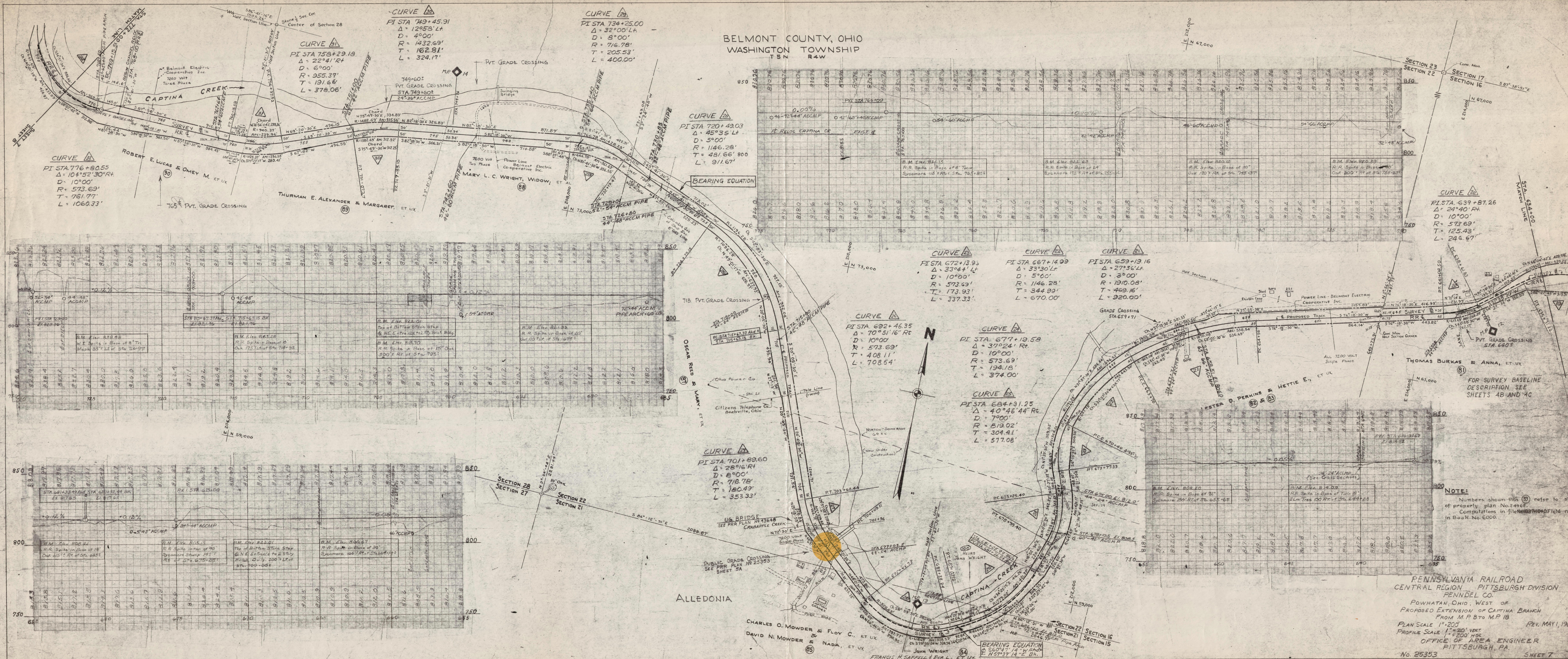


BELMONT COUNTY, OHIO
WASHINGTON TOWNSHIP
T5N R4W



CURVE 1
PI STA 776+80.55
 $\Delta = 104^{\circ}52'30''$ RT
D = 573.63'
R = 573.63'
T = 761.77'
L = 1060.33'

CURVE 2
PI STA 758+29.18
 $\Delta = 22^{\circ}41'24''$
D = 690.00'
R = 955.37'
T = 191.66'
L = 378.06'

CURVE 3
PI STA 734+25.00
 $\Delta = 32^{\circ}00'14''$
D = 800.00'
R = 716.78'
T = 205.53'
L = 400.00'

CURVE 4
PI STA 720+49.03
 $\Delta = 45^{\circ}35'14''$
D = 500.00'
R = 1146.28'
T = 481.66' 800
L = 911.67'

CURVE 5
PI STA 672+13.93
 $\Delta = 33^{\circ}30'14''$
D = 1000.00'
R = 573.63'
T = 173.93'
L = 337.33'

CURVE 6
PI STA 667+14.99
 $\Delta = 33^{\circ}30'14''$
D = 500.00'
R = 1146.28'
T = 344.99'
L = 670.00'

CURVE 7
PI STA 659+19.16
 $\Delta = 27^{\circ}36'14''$
D = 300.00'
R = 1910.09'
T = 459.16'
L = 920.00'

CURVE 8
PI STA 677+19.58
 $\Delta = 37^{\circ}24'14''$ RT
D = 1000.00'
R = 573.63'
T = 194.18'
L = 374.00'

CURVE 9
PI STA 694+31.25
 $\Delta = 40^{\circ}46'44''$ RT
D = 700.00'
R = 819.02'
T = 304.41'
L = 517.08'

CURVE 10
PI STA 701+89.60
 $\Delta = 28^{\circ}16'14''$
D = 800.00'
R = 716.78'
T = 180.49'
L = 353.33'

CURVE 11
PI STA 639+87.26
 $\Delta = 24^{\circ}40'14''$
D = 1000.00'
R = 573.63'
T = 125.43'
L = 246.67'

NOTE:
Numbers shown thus (8) refer to sheets of property plan No. 2496.
Computations in file No. 1104 of field notes in Book No. 6000.

PENNSYLVANIA RAILROAD
CENTRAL REGION - PITTSBURGH DIVISION
PENNDL CO.
POWhatan, OHIO, WEST OF
PROPOSED EXTENSION OF CAPTINA BRANCH
FROM M.P. 8 TO M.P. 18
PLAN SCALE 1" = 200' VERT
PROFILE SCALE 1" = 200' VERT
OFFICE OF AREA ENGINEER
PITTSBURGH, PA.
No. 25353 SHEET 7

STA. 684 TO STA. 772