

BELMONT COUNTY, OHIO
WASHINGTON TWP.

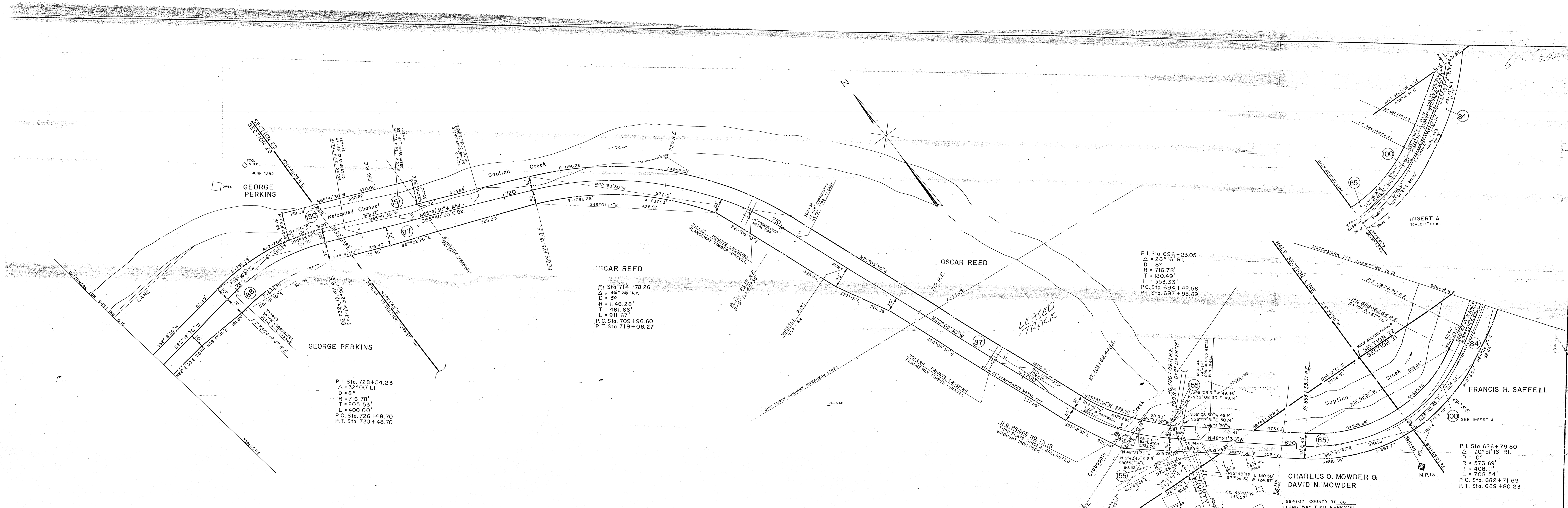


Correct as of Dec. 31st, 1955.	Revis	©
Correct as of Dec. 31st, 1954.	No	Revision
Correct as of Dec. 31st, 1953.	No	Revision
Correct as of Dec. 31st, 1952.	Map	Revised
Correct as of Dec. 31st, 1951.	No	Revision
Correct as of Dec. 31st, 1950.	No	Revision
Correct as of Dec. 31st, 1949.	No	Revision
Correct as of Dec. 31st, 1948.	Map	Revised
Correct as of Dec. 31st, 1947.	No	Revision
Correct as of Dec. 31st, 1946.	Revis	
Correct as of Dec. 31st, 1945.	Revis	
Correct as of Dec. 31st, 1944.	Revis	
Correct as of Dec. 31st, 1943.	Revis	

Pennell Company
RIGHT OF WAY AND TRACK MAP
PITTSBURGH, OHIO VALLEY AND CINCINNATI R.R.
STATION 686+40 TO STATION 739+20
SCALE 1" = 100' JUNE 30, 1918
OFFICE OF VALUATION ENGINEER
PHILADELPHIA, PA.

V. 24
OHIO
15.14
V. S. 12
OHIO
15.14

PARCEL NO.	GRANTOR	GRANTEE	KIND OF INSTRUMENT	DATE OF INSTRUMENT	RECORDED			CUSTODIAN'S RECORD			AREA	REMARKS
					BOOK	PAGE	DATE	R. E. A.'s No.	BOX	PKG.		
1	Oscar Reed, et ux	P.O.V.&E.R.R.	Fee Deed	July 20, 1948	379	228	Aug. 12, 1948	48926	3071	10	7.452AC	
2	Charles O. Mowder, et ux	"	"	July 30, 1948	379	222	Aug. 12, 1948	48927	3071	21	2.366AC	Remainder shown as Pcl #1 Map 15.13
3	Francis H. Saffell, et ux	"	"	Sept. 15, 1948	377	549	Oct. 2, 1948	49054	3075	11	0.642AC	Remainder shown as Pcl #2 Map 15.13
4	Mary L. C. Wright, et al	"	"	Nov. 8, 1948	381	100	Dec. 29, 1948	49096	3077	23	3.299AC	Remainder shown as Pcl #3 Map 15.15
5	Earl E. Chedester, et ux, et al	The P.O.V. and C.R.R.Co.	Fee Deed	Oct 2, 1952	395	400	Jan 3, 1953	51390	3131	4	0.364 Ac	Remainder shown as Pcl #5 Map 15.13



P.I. Sta. 728+54.23
 $\Delta = 32^{\circ}00' L$
 $D = 8'$
 $R = 716.78'$
 $T = 205.53'$
 $L = 400.00'$
 P.C. Sta. 726+48.70
 P.T. Sta. 730+48.70

OSCAR REED
 P.I. Sta. 714+78.26
 $\Delta = 45^{\circ}35' L$
 $D = 59'$
 $R = 1146.28'$
 $T = 481.66'$
 $L = 911.67'$
 P.C. Sta. 709+96.60
 P.T. Sta. 719+08.27

P.I. Sta. 696+23.05
 $\Delta = 28^{\circ}16' R$
 $D = 8'$
 $R = 716.78'$
 $T = 180.49'$
 $L = 353.33'$
 P.C. Sta. 694+42.56
 P.T. Sta. 697+95.89

P.I. Sta. 686+79.80
 $\Delta = 70^{\circ}51'16'' R$
 $D = 10'$
 $R = 573.69'$
 $T = 408.11'$
 $L = 708.54'$
 P.C. Sta. 682+71.69
 P.T. Sta. 689+80.23

PARCEL NO.	GRANTOR	GRANTEE	KIND OF INSTRUMENT	DATE OF RECORD	RECORDED BOOK/PAGE	DATE	CUSTODIANS RECORD REA. NO. BOX PKG	AREA	REMARKS
84	FRANCIS H. SAFFELL et ux	PENNDL COMPANY	Deed					0.642 Ac.	
85	CHARLES O. MOWDER et ux & DAVID N. MOWDER et ux	PENNDL COMPANY	Deed					2.366 Ac.	
87	OSCAR REED et ux	PENNDL COMPANY	Deed					7.452 Ac.	
88	MARY L. C. WRIGHT et ux	PENNDL COMPANY	Deed					3.299 Ac.	
100	JOHN WRIGHT	PENNDL COMPANY	Deed					0.569 Ac.	
150	GEORGE PERKINS et ux	PENNDL COMPANY	Deed					0.295 Ac.	EASEMENT FOR CHANNEL RELOCATION
151	OSCAR REED et ux	PENNDL COMPANY	Deed					0.633 Ac.	EASEMENT FOR CHANNEL RELOCATION
155	CHARLES O. MOWDER et ux & DAVID N. MOWDER et ux	PENNDL COMPANY	Deed					0.102 Ac.	EASEMENT FOR HIGHWAY RELOCATION

LEGEND
 — R.E. = Real Estate Center Line
 - - - Rev. R.E. = Revised Real Estate Center Line
 — Constr. = Construction Center Line

CORRECT AS OF	REVISED	YES	NO
1924			
1927			
1928			
1929			
1930			
1931			
1932			
1933			
1934			
1935			
1936			
1937			
1938			
1939			
1940			
1941			
1942			
1943			
1944			
1945			
1946			
1947			
1948			
1949			
1950			
1951			
1952			
1953			
1954			
1955			

THIS PRINT IS PROVIDED FOR THE USE OF YOU...
 PENNDL COMPANY
 MANAGEMENT SERVICES

PENNDL COMPANY
 RIGHT OF WAY AND TRACK MAP
 CENTRAL REGION-PITTSBURGH DIVISION
 CAPTINA BRANCH
 STATION 686+65 RE. TO STATION 739+45 RE.
 SCALE 1" = 100' JUNE 30, 1918

BELMONT COUNTY, OHIO
 WASHINGTON TWP.