

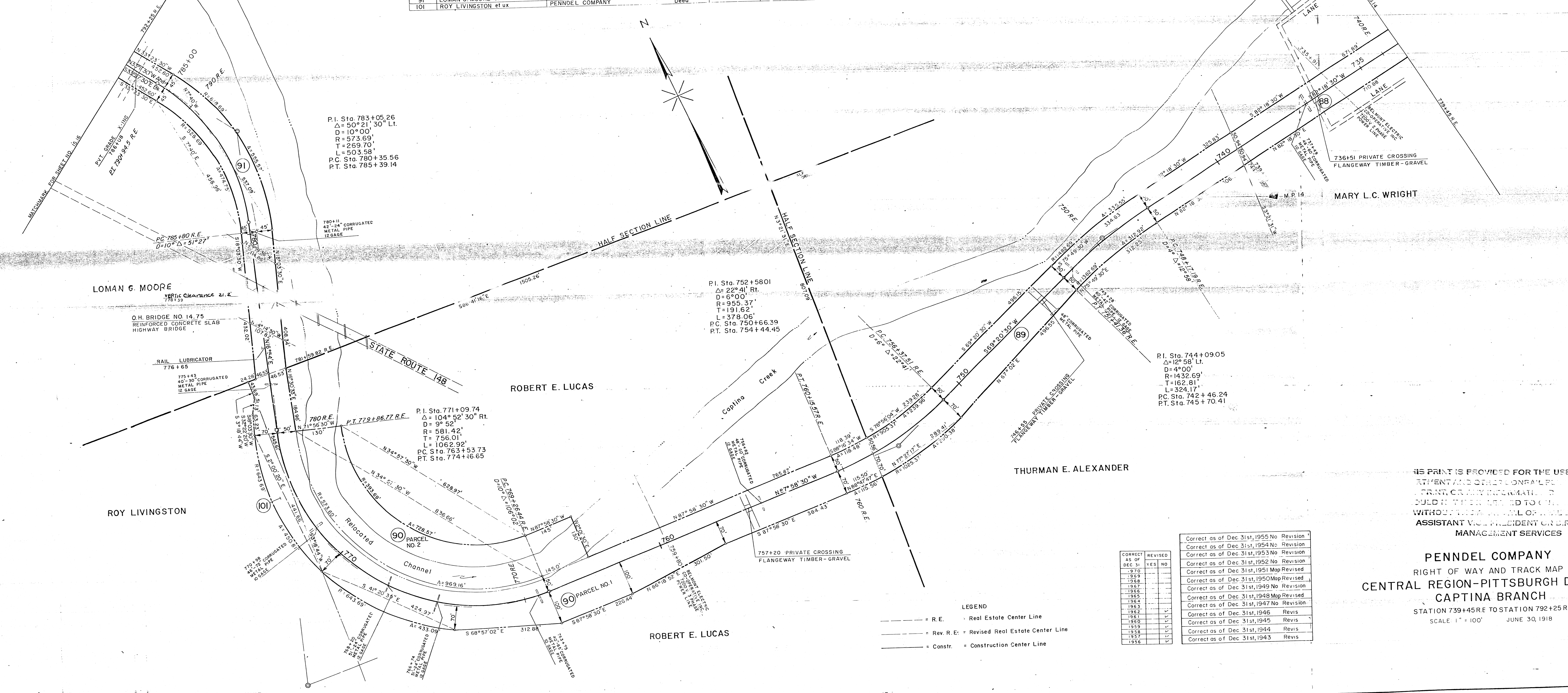
BELMONT COUNTY, OHIO
WASHINGTON TWP

Correct as of Dec. 31st, 1955.	Revis
Correct as of Dec. 31st, 1954.	No Revision
Correct as of Dec. 31st, 1953.	No Revision
Correct as of Dec. 31st, 1952.	No Revision
Correct as of Dec. 31st, 1951.	Map Revised
Correct as of Dec. 31st, 1950.	Map Revised
Correct as of Dec. 31st, 1949.	No Revision
Correct as of Dec. 31st, 1948.	Map Revised
Correct as of Dec. 31st, 1947.	No Revision
Correct as of Dec. 31st, 1946.	Revis
Correct as of Dec. 31st, 1945.	Revis
Correct as of Dec. 31st, 1944.	Revis
Correct as of Dec. 31st, 1943.	Revis

Pandell Company
RIGHT OF WAY AND TRACK MAP
PITTSBURGH, OHIO VALLEY AND CINCINNATI R.R.
STATION 739+20 TO STATION 792+00
SCALE 1"=100' JUNE 30, 1918
OFFICE OF VALUATION ENGINEER
PHILADELPHIA, PA.

V 24
OHIO
15.15
V 312
OHIO
15.15

PARCEL NO.	GRANTOR	GRANTEE	KIND OF INSTRUMENT	DATE OF INSTRUMENT	RECORDED			CUSTODIAN'S RECORD			AREA	REMARKS
					BOOK	PAGE	DATE	R. E. A.'s No.	BOX	PKG.		
1	Loman G. Moore, etux	P.O.V.&C.R.R.	Fee Deed	Oct. 21, 1948	379	488	Nov. 10, 1948	49099	3075	13	5.523AC	Remainder shown as Pcl #1 Map 15.16
2	Thurman E. Alexander, etux	"	"	Oct. 26, 1948	382	263	Apr. 15, 1949	49097	3082	15	3.453AC	
3	Mary L.C. Wright etal	"	"	Nov. 8, 1948	381	100	Dec. 29, 1948	49096	3077	23	3.299AC	Remainder shown as Pcl #4 Map 15.14
4	Robert E. Lucas	"	Fee	Jan. 18, 1950	390	8	Jan. 24, 1950	49101	3096	9	5.997A.	
5	"	"	Easement	"	"	"	"	"	"	"	2.966A.	
6	Roy Livingston	"	Fee	"	385	455	Jan. 21, 1950	49579	3097	3	0.531A.	
7	P.O.V.&C.R.R. Co.	State of Ohio Dept of Hghwys	Grant	Aug. 6, 1951				50711	3115	7	0.470 Ac	Easement for highway purposes. Part Pcl. 1.
8	State of Ohio	P.O.V.&C.R.R.	Vacation	Apr. 23, 1953	38	98	Apr. 23, 1953	51662	3132	14	0.148 Ac	Vacation of S.H. Rt. 148 X-ing. R.R. executed Rel. of damages March 20, 1953. Part pcls. 1 and 4.



P.I. Sta. 783+05.26
 $\Delta = 50^\circ 21' 30''$ Lt.
 $D = 10^\circ 00'$
 $R = 573.69'$
 $T = 259.70'$
 $L = 503.58'$
 P.C. Sta. 780+35.56
 P.T. Sta. 785+39.14

P.I. Sta. 752+58.01
 $\Delta = 22^\circ 41'$ Rt.
 $D = 6^\circ 00'$
 $R = 955.37'$
 $T = 191.62'$
 $L = 378.06'$
 P.C. Sta. 750+66.39
 P.T. Sta. 754+44.45

P.I. Sta. 771+09.74
 $\Delta = 104^\circ 52' 30''$ Rt.
 $D = 9^\circ 52'$
 $R = 581.42'$
 $T = 756.01'$
 $L = 1062.92'$
 P.C. Sta. 763+53.73
 P.T. Sta. 774+46.65

P.I. Sta. 744+09.05
 $\Delta = 12^\circ 58'$ Lt.
 $D = 4^\circ 00'$
 $R = 1432.69'$
 $T = 162.81'$
 $L = 324.17'$
 P.C. Sta. 742+46.24
 P.T. Sta. 745+70.41

CORRECT	REVISED	AS OF	YES	NO
		1970		
		1969		
		1968		
		1967		
		1966		
		1965		
		1964		
		1963		
		1962		
		1961		
		1960		
		1959		
		1958		
		1957		
		1956		

Correct as of Dec 31st, 1955	No Revision
Correct as of Dec 31st, 1954	No Revision
Correct as of Dec 31st, 1953	No Revision
Correct as of Dec 31st, 1952	No Revision
Correct as of Dec 31st, 1951	Map Revised
Correct as of Dec 31st, 1950	Map Revised
Correct as of Dec 31st, 1949	No Revision
Correct as of Dec 31st, 1948	Map Revised
Correct as of Dec 31st, 1947	No Revision
Correct as of Dec 31st, 1946	Revis
Correct as of Dec 31st, 1945	Revis
Correct as of Dec 31st, 1944	Revis
Correct as of Dec 31st, 1943	Revis

LEGEND
 - - - - - = R.E. = Real Estate Center Line
 - - - - - = Rev. R. E. = Revised Real Estate Center Line
 - - - - - = Constr. = Construction Center Line

THIS PRINT IS PROVIDED FOR THE USE OF YOUR ATTENT AND OTHER COMPANY'S FIELD PRINT OR ANY INFORMATION OBTAINED HEREON SHOULD BE REFERRED TO THE PARTIES WITHOUT THE CONSENT OF THE ASSISTANT VICE PRESIDENT OR DIRECTOR, MANAGEMENT SERVICES

PENNDEL COMPANY
 RIGHT OF WAY AND TRACK MAP
 CENTRAL REGION-PITTSBURGH DIVISION
 CAPTINA BRANCH
 STATION 739+45R TO STATION 792+25R.E.
 SCALE 1" = 100' JUNE 30, 1918

BELMONT COUNTY, OHIO
 WASHINGTON TWP.