



IN MUST BE KEPT WITH THIS MAP WHERE SHOWN BY THE D.U.P.

BELMONT COUNTY, OHIO
WASHINGTON TWP



Correct as of Dec. 31st, 1935	Revis	5
Correct as of Dec. 31st, 1934	No Revision	
Correct as of Dec. 31st, 1933	No Revision	
Correct as of Dec. 31st, 1932	No Revision	
Correct as of Dec. 31st, 1931	No Revision	
Correct as of Dec. 31st, 1930	No Revision	
Correct as of Dec. 31st, 1929	Revised	
Correct as of Dec. 31st, 1928	Revised	
Correct as of Dec. 31st, 1927	No Revision	
Correct as of Dec. 31st, 1926	Revis	
Correct as of Dec. 31st, 1925	Revis	
Correct as of Dec. 31st, 1924	Revis	
Correct as of Dec. 31st, 1923	Revis	

Pennell Company
 RIGHT OF WAY AND TRACK
PITTSBURGH, OHIO VALLEY AND CINCINNATI R.R.
 STATION 792+00 TO STATION 844+80
 SCALE 1" = 100' JUNE 30, 1918
 OFFICE OF THE VALUATION ENGINEER
 PHILADELPHIA, PA.

V. 24
OHIO
15.16

V. 12
OHIO
15.16

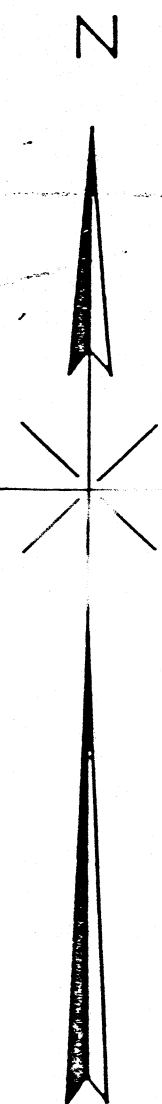
OWNING CO. P.O.V.&C.R.R. CO.

VAL. SECT 12 Ohio

MAP 15.16

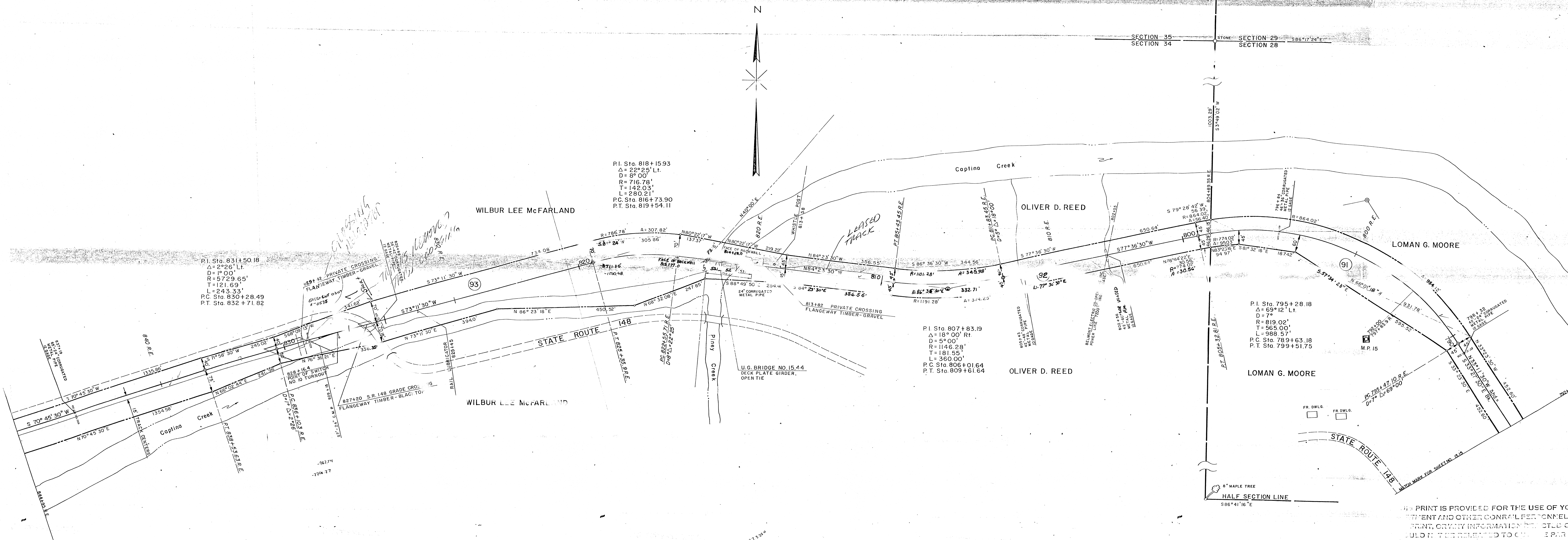
DEED SCHEDULE

PARCEL NO.	GRANTOR	GRANTEE	KIND OF INSTRUMENT	DATE OF INSTRUMENT	RECORDED			CUSTODIAN'S RECORD			AREA	REMARKS
					BOOK	PAGE	DATE	FILE NO.	BOX	PKG		
1	Loman G. Moore, etux	P.O.V.&C.R.R.	Fee Deed	Oct. 21, 1948	379	488	Nov. 10, 1948	49099	3075	13	5.523AC	Remainder shown as Pol #1 Map 15.15 Remainder shown as Pol #1 Map 15.17
2	Wilbur I. McFarland, etux	"	"	Nov. 10, 1948	381	260	Jan. 28, 1949	49098	3079	14	9.459AC	
3	Oliver D. Reed etux	"	"	Apr. 4, 1949	382	260	Apr. 4, 1949	49100	3082	16	3.532AC	



SECTION 35
SECTION 34

SECTION 29
SECTION 28



P.I. Sta. 831+50.18
Δ = 2°26' Lt.
D = 1°00'
R = 5729.65'
T = 121.69'
L = 243.33'
P.C. Sta. 830+28.49
P.T. Sta. 832+71.82

P.I. Sta. 818+15.93
Δ = 22°25' Lt.
D = 8°00'
R = 716.78'
T = 142.03'
L = 280.21'
P.C. Sta. 816+73.90
P.T. Sta. 819+54.11

P.I. Sta. 807+83.19
Δ = 18°00' Rt.
D = 5°00'
R = 1146.28'
T = 181.55'
L = 360.00'
P.C. Sta. 806+01.64
P.T. Sta. 809+61.64

P.I. Sta. 795+28.18
Δ = 69°12' Lt.
D = 7°
R = 819.02'
T = 565.00'
L = 988.57'
P.C. Sta. 789+63.18
P.T. Sta. 799+51.75

SCHEDULE OF PROPERTY									
PARCEL NO.	GRANTOR	GRANTEE	KIND OF INSTRUMENT	DATE OF INSTRUMENT	RECORDED BOOK PAGE DATE	CUSTODIANS RECORD REA. NO. BOX PKG.	AREA	REMARKS	
91	LOMAN G. MOORE et ux	PENNDL COMPANY	Deed				5.523 Ac.±		
92	OLIVER D. REED et ux	PENNDL COMPANY	Deed				3.532 Ac.±		
93	WILBUR LEE McFARLAND et ux	PENNDL COMPANY	Deed						

LEGEND
 --- = R.E. = Real Estate Center Line
 --- = Rev. R.E. = Revised Real Estate Center Line
 --- = Constr. = Construction Center Line

CORRECT AS OF	REVISED
DEC 31	YES NO
1970	
1969	
1968	
1967	
1966	
1965	
1964	
1963	
1962	
1961	
1960	
1959	
1958	
1957	
1956	

Correct as of Dec 31st, 1955 No Revision
 Correct as of Dec 31st, 1954 No Revision
 Correct as of Dec 31st, 1953 No Revision
 Correct as of Dec 31st, 1952 No Revision
 Correct as of Dec 31st, 1951 No Revision
 Correct as of Dec 31st, 1950 No Revision
 Correct as of Dec 31st, 1949 Map Revised
 Correct as of Dec 31st, 1948 Map Revised
 Correct as of Dec 31st, 1947 No Revision
 Correct as of Dec 31st, 1946 Revis
 Correct as of Dec 31st, 1945 Revis
 Correct as of Dec 31st, 1944 Revis
 Correct as of Dec 31st, 1943 Revis

THIS PRINT IS PROVIDED FOR THE USE OF YOU
 AND OTHER CONRAIL PERSONNEL
 PRINT, OR ANY INFORMATION DERIVED THEREFROM,
 SHOULD NOT BE RELEASED TO THE PUBLIC OR
 WITHOUT THE APPROVAL OF THE STATE
 ASSISTANT VICE PRESIDENT OR DIRECTOR,
 MANAGEMENT SERVICES

PENNDL COMPANY
 RIGHT OF WAY AND TRACK MAP
 CENTRAL REGION-PITTSBURGH DIVISION
 CAPTINA BRANCH
 STATION 792+25 R.E. TO STATION 844+95 R.E.
 SCALE 1" = 100' JUNE 30, 1918