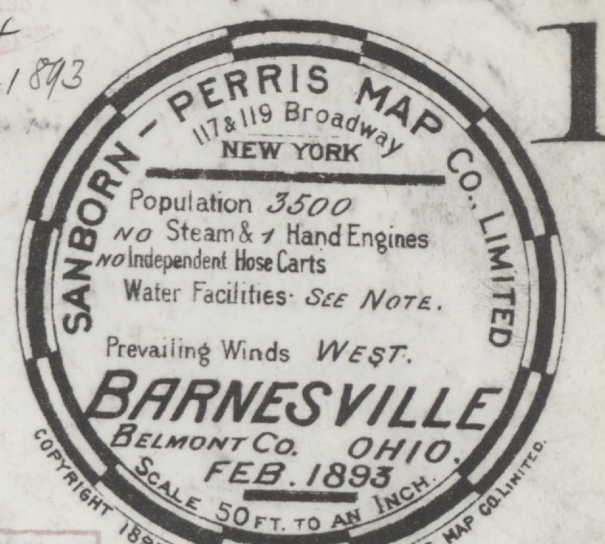


13024

6074
4 SHEETS.

13024
Mar. 14, 1893



KEY

3 1/2" x 1 1/2" (S)	FIRE WALL G.I.N. AB. ROOF
3 1/2" x 1 1/2" (S)	DOUBLE ROOF
3 1/2" x 1 1/2" (S)	COMBUSTIBLE ROOF
3 1/2" x 1 1/2" (S)	SLATE ON THE ROOF
3 1/2" x 1 1/2" (S)	STEAM BOILER
3 1/2" x 1 1/2" (S)	FRAME PARTITION
3 1/2" x 1 1/2" (S)	OPENING & IRON DOOR
3 1/2" x 1 1/2" (S)	WINDOWS - SHUTTERS
3 1/2" x 1 1/2" (S)	STABLE
3 1/2" x 1 1/2" (S)	WINDOW IN 1 ST STORY
3 1/2" x 1 1/2" (S)	17' & 3 1/2"
3 1/2" x 1 1/2" (S)	27' & 4 1/2"
3 1/2" x 1 1/2" (S)	BLDGS COLORED YELLOW ARE FRAME
3 1/2" x 1 1/2" (S)	RED BRICK
3 1/2" x 1 1/2" (S)	BLUE STONE
3 1/2" x 1 1/2" (S)	BROWN IRON
3 1/2" x 1 1/2" (S)	BROWN ADOBES
3 1/2" x 1 1/2" (S)	GREEN SPECIALS
3 1/2" x 1 1/2" (S)	MARKED (S) ARE CLOTH LINED
3 1/2" x 1 1/2" (S)	(S) INDICATE RELATIVE HEIGHTS
3 1/2" x 1 1/2" (S)	ALTERNATE STREET NOS ARE ACTUAL
3 1/2" x 1 1/2" (S)	CONSECUTIVE - ARBITRARY
3 1/2" x 1 1/2" (S)	BROKEN LINE NEAR BLDG - WOOD CORNICE
3 1/2" x 1 1/2" (S)	SOLID " " " METAL

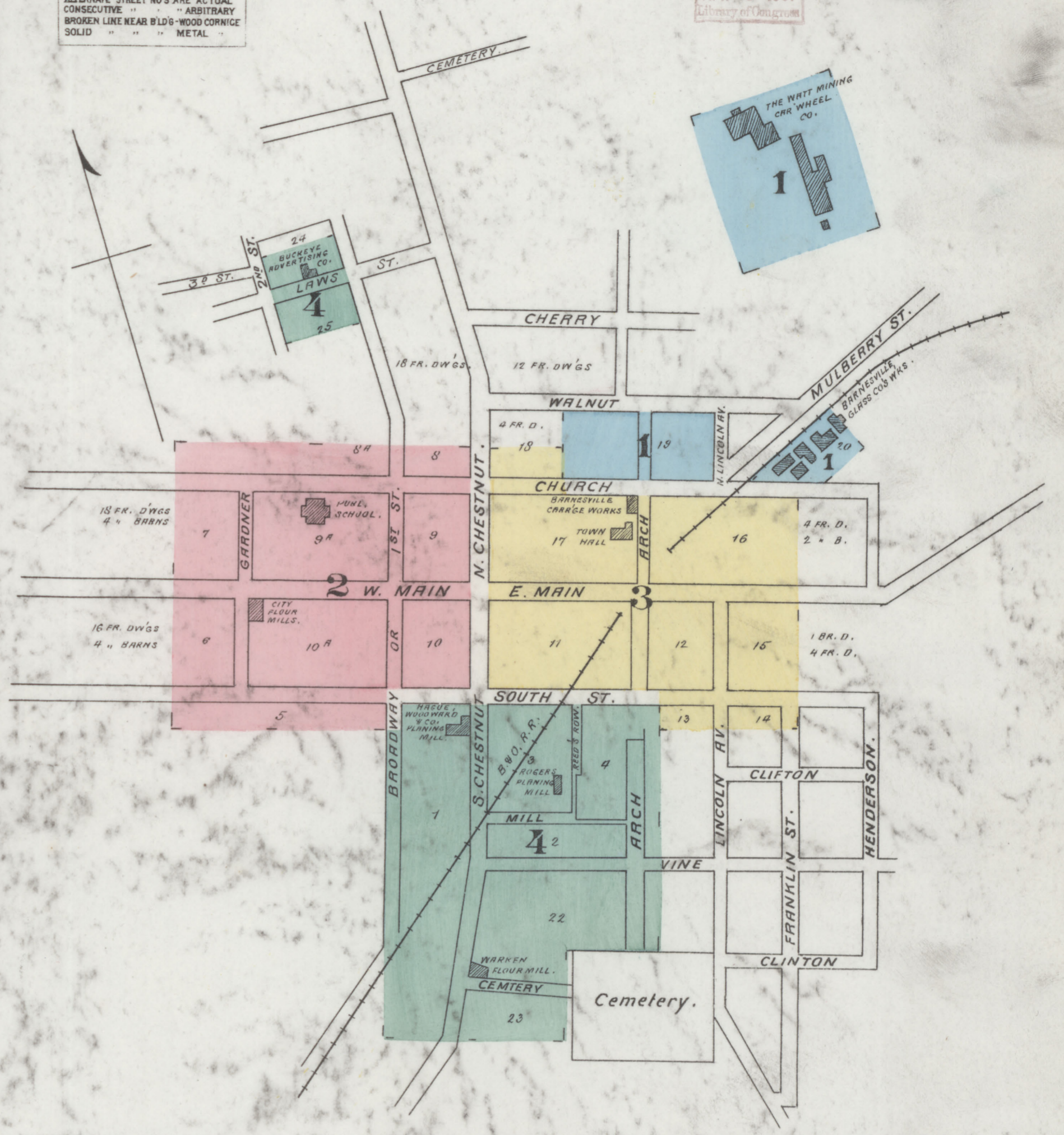
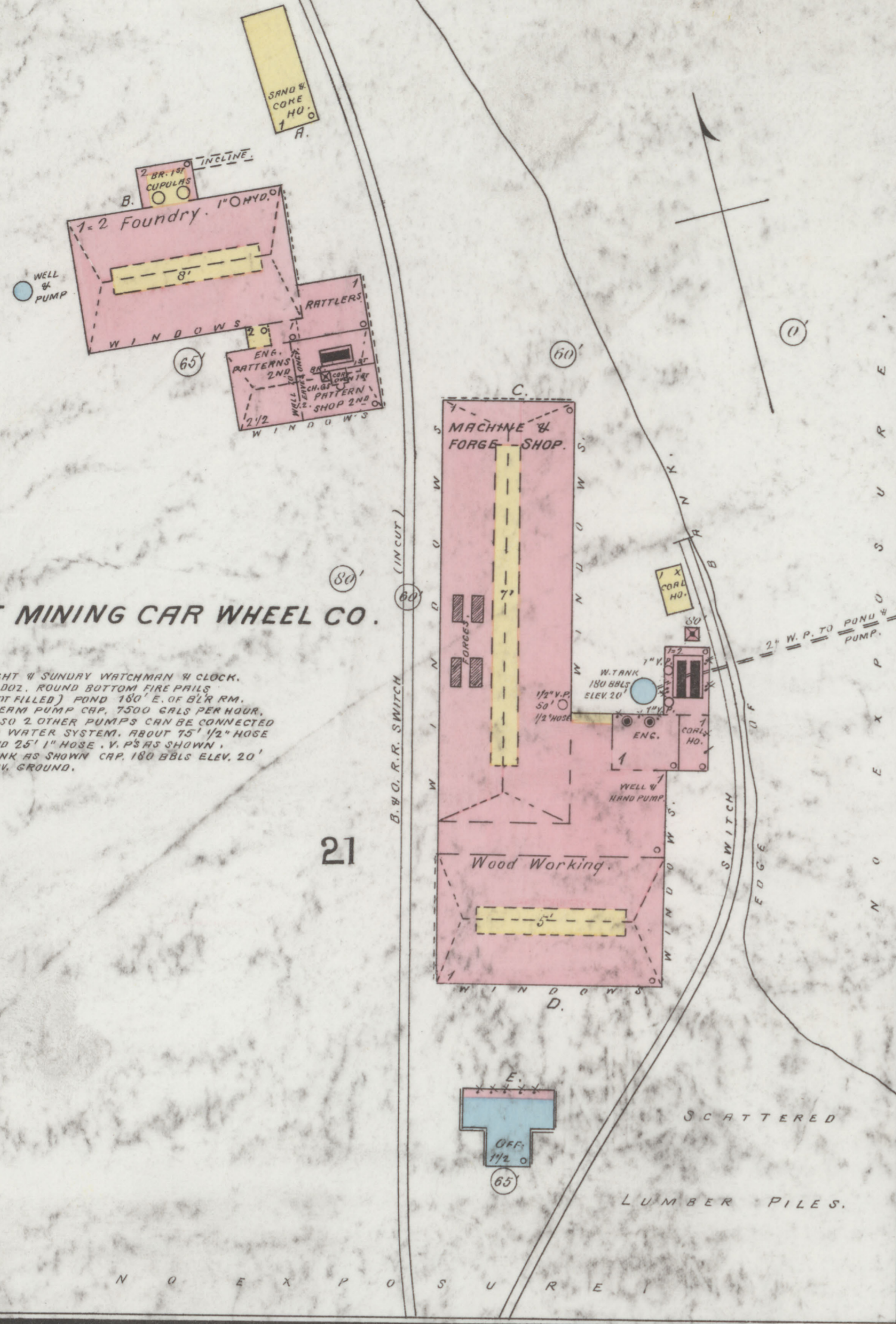
NOTE.

Water Facilities: 23 CISTERNS CAPACITY OF EA. ABOUT 300 BALS.

Fire Dept. VOLUNTEER DIVIDED INTO 3 COMPANIES WITH ONE CHIEF & 3 CAPTAINS. ENG. CO. HAS 40 MEMBERS & 7 HAND ENGS. HOSE CO. HAS 20 MEMBERS, 1 HOSE CART AND 100' OF GOOD HOSE. H.W.L. CO HAS 30 MEMBERS, 1 H.W.L. TRUCK

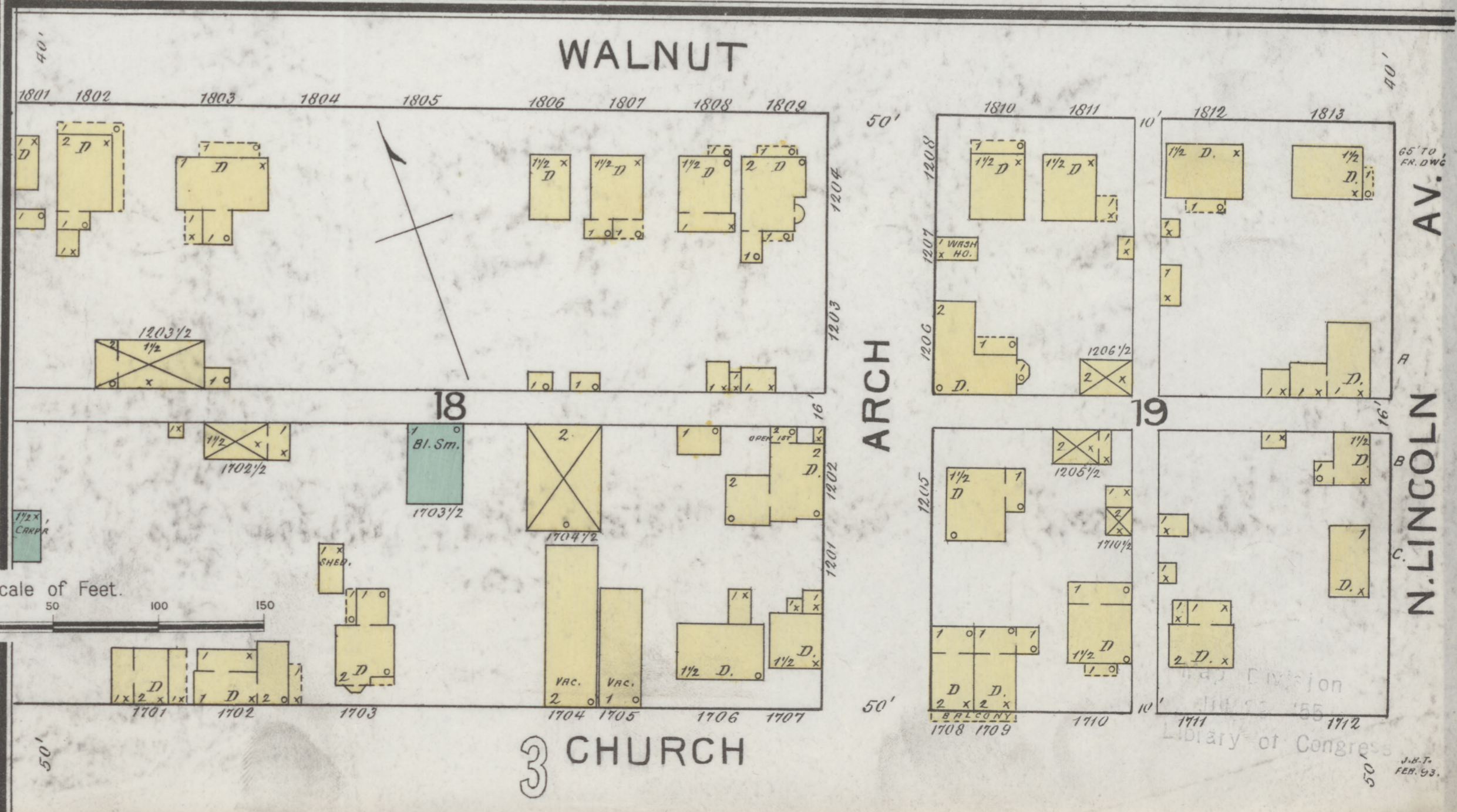
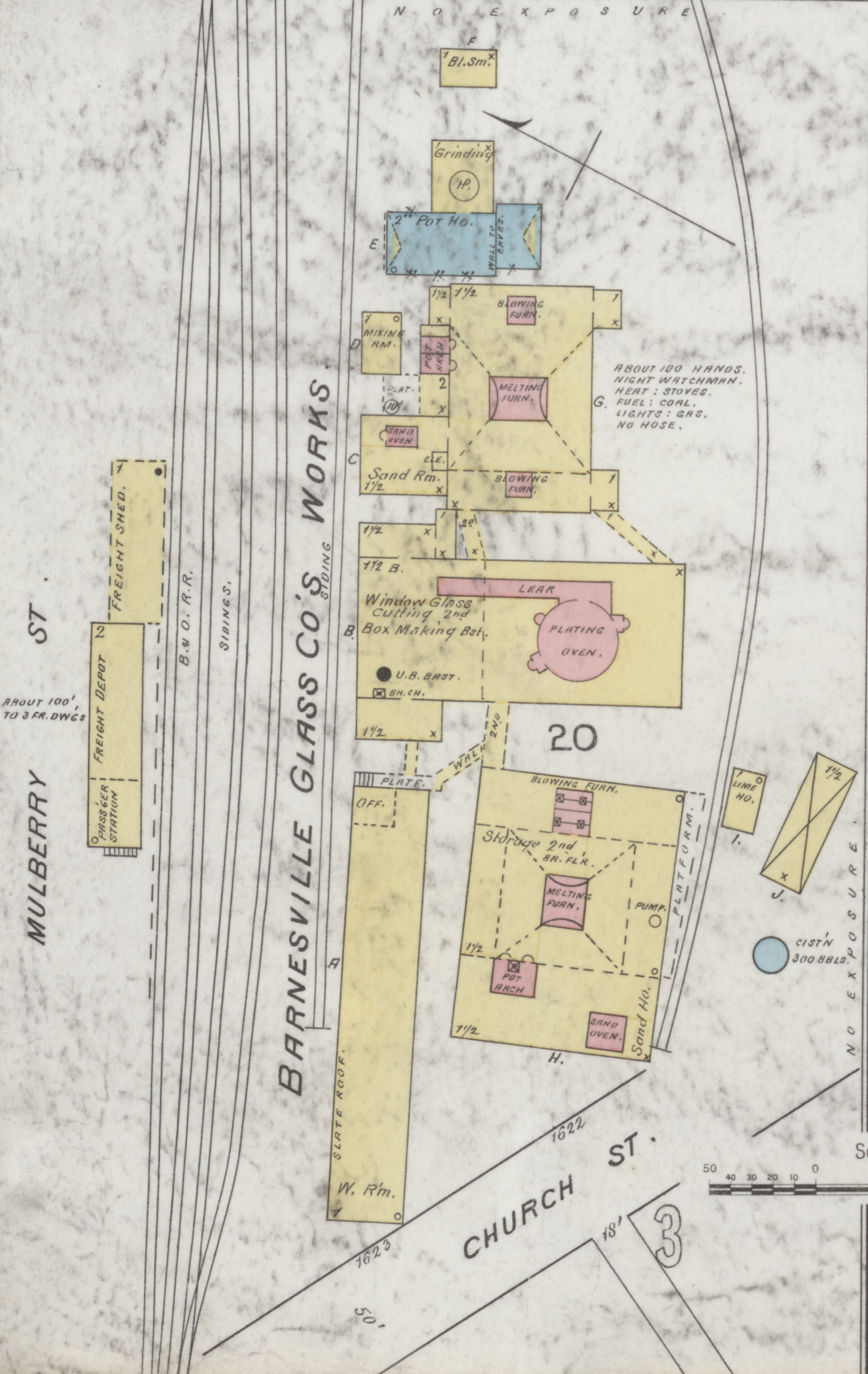
NOS. ON MAIN ST. ARE BASED ON ACTUAL NOS OF ABOUT 1/3 OF THE HOUSES. ALL OTHERS ARE ARBITRARY.

Map Edition
APR 8 1907
Library of Congress



INDEX.

SPECIALS.		C		P	
	Christian Church,.....	2		Public School,.....	2
	City Flour Mills,.....	2			
B		H		R	
Barlow Bros, Berry Basket Works,.....	4	Hague, Woodward & Co., Planing Mill,...	4	Rogers, T., & A., Planing Mill,.....	4
Barnesville Carriage Works,.....	3	Heed Bros, Cigar Factory,.....	2		
" Gas & Electric Light Co.,.....	4	Hilles, S. C., & Bros, Warren Mills,.....	4		
" Glass Co., Works,.....	1	Hobbs, W. H., Washing Machines,.....	4	Town Hall,.....	3
Bonnell, L. H., City Mills,.....	2	" Central,.....	3		
Bradfield, T., & J., Tobacco Warehouse,.....	3			Warren Flour Mills,.....	4
" Block,.....	3			Watt Mining Car Wheel Co.,.....	1
Buckeye Advertising Co.,.....	4	L			
Bunnell & Hilles, Grain Warehouse,.....	4	Little, C. H., Carriage Works,.....	3		



FEB. 1893
BARNESVILLE
OHIO

GARDNER

GARDNER

10A

9A

8A

Cemetery

CHRISTIAN CHURCH

PUBLIC SCHOOL
Hall 34

L.H. BONNELL
CITY MILLS
FULL, COAL & OILS. HEAT, STOVE LIGHTS,
LAMP GLASS & REFRIGERATE. POWER, STEAM,
NO. WATCHMAN.
1 RUBBER SHUT. MARCH. BRIST 700 KEY.
1 FLOW STONE. 14"
6 SET ROLLS 15"
1 COMBINATION SCOURER 14"
1 RUBBER SEPARATOR 5/4 5/4 5/4 5/4
1 10" 1/2" MIDDLES PURIFIER
1 SILVER CRIB. 4"
1 GROUT COLLECTOR.

SOUTH

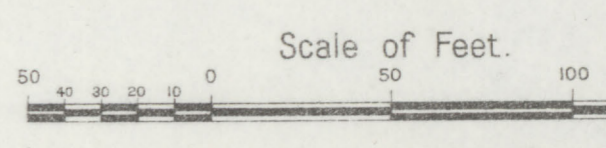
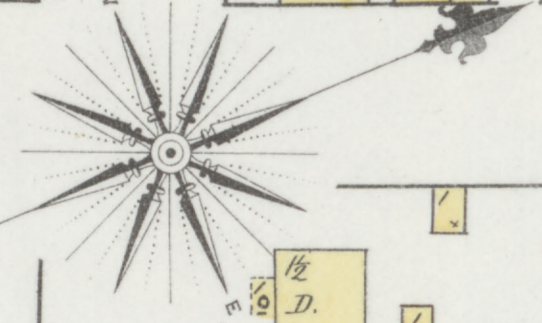
W. MAIN

CHURCH

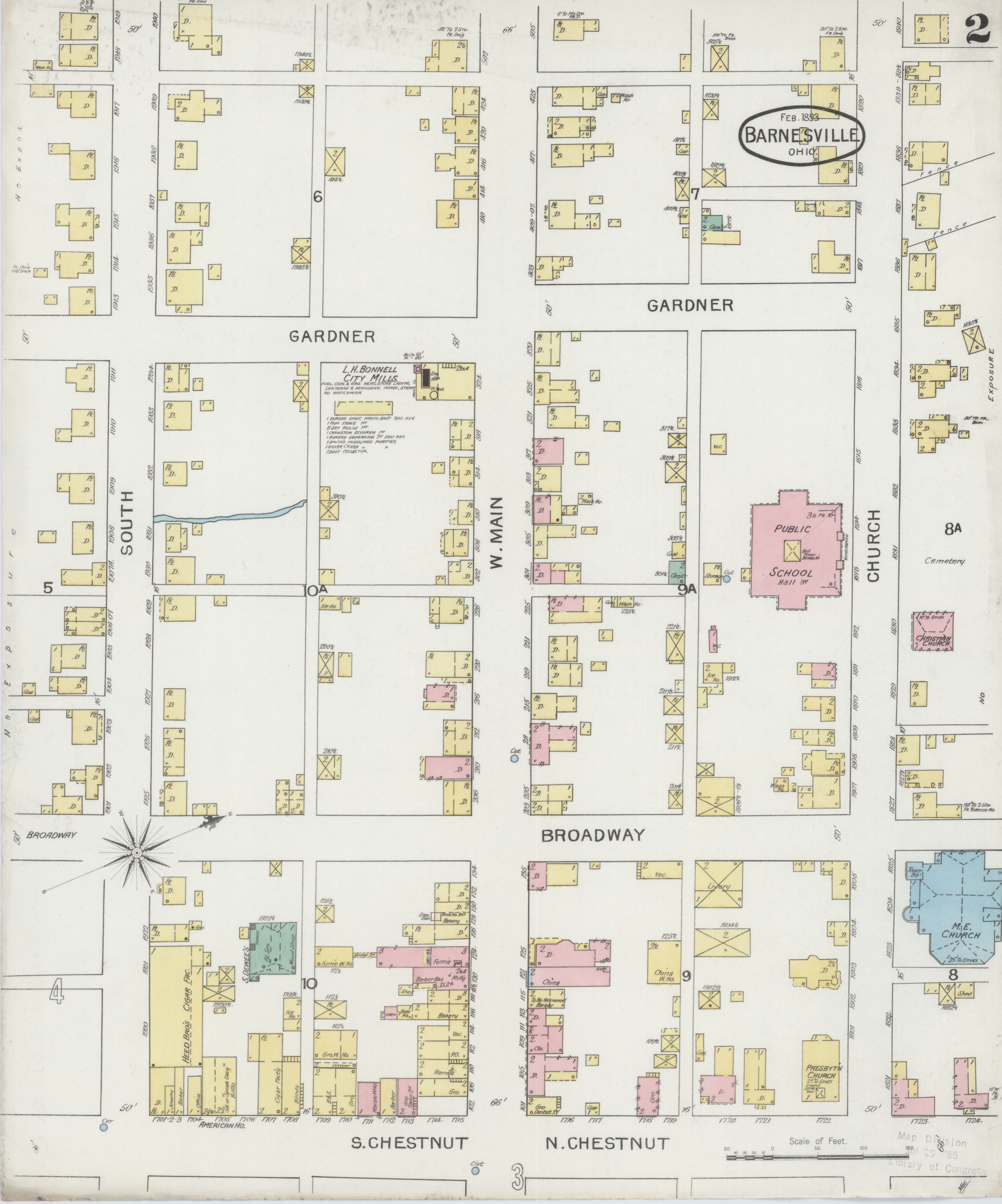
BROADWAY

S. CHESTNUT

N. CHESTNUT



Map Division
Jul 29 1895
Library of Congress

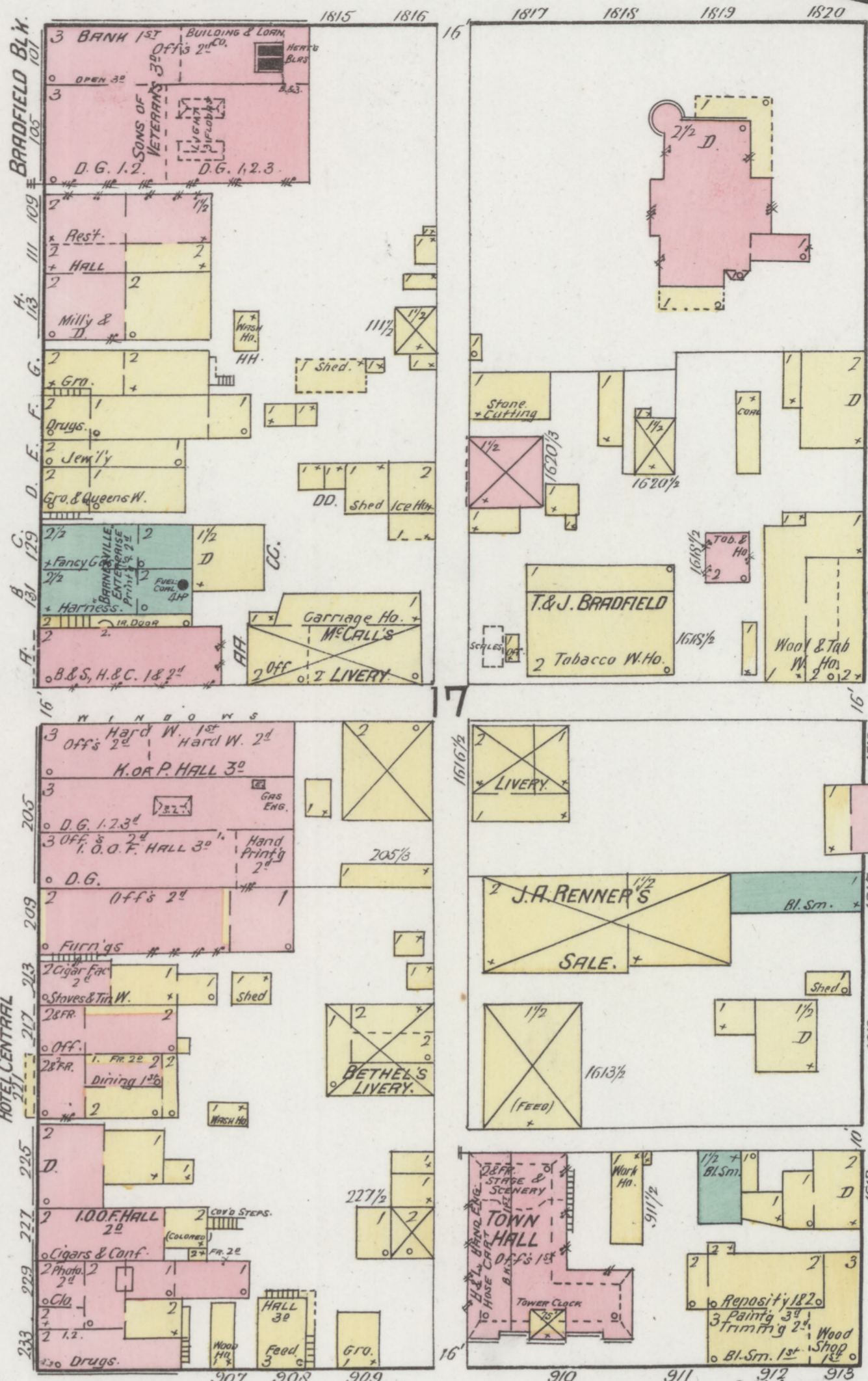
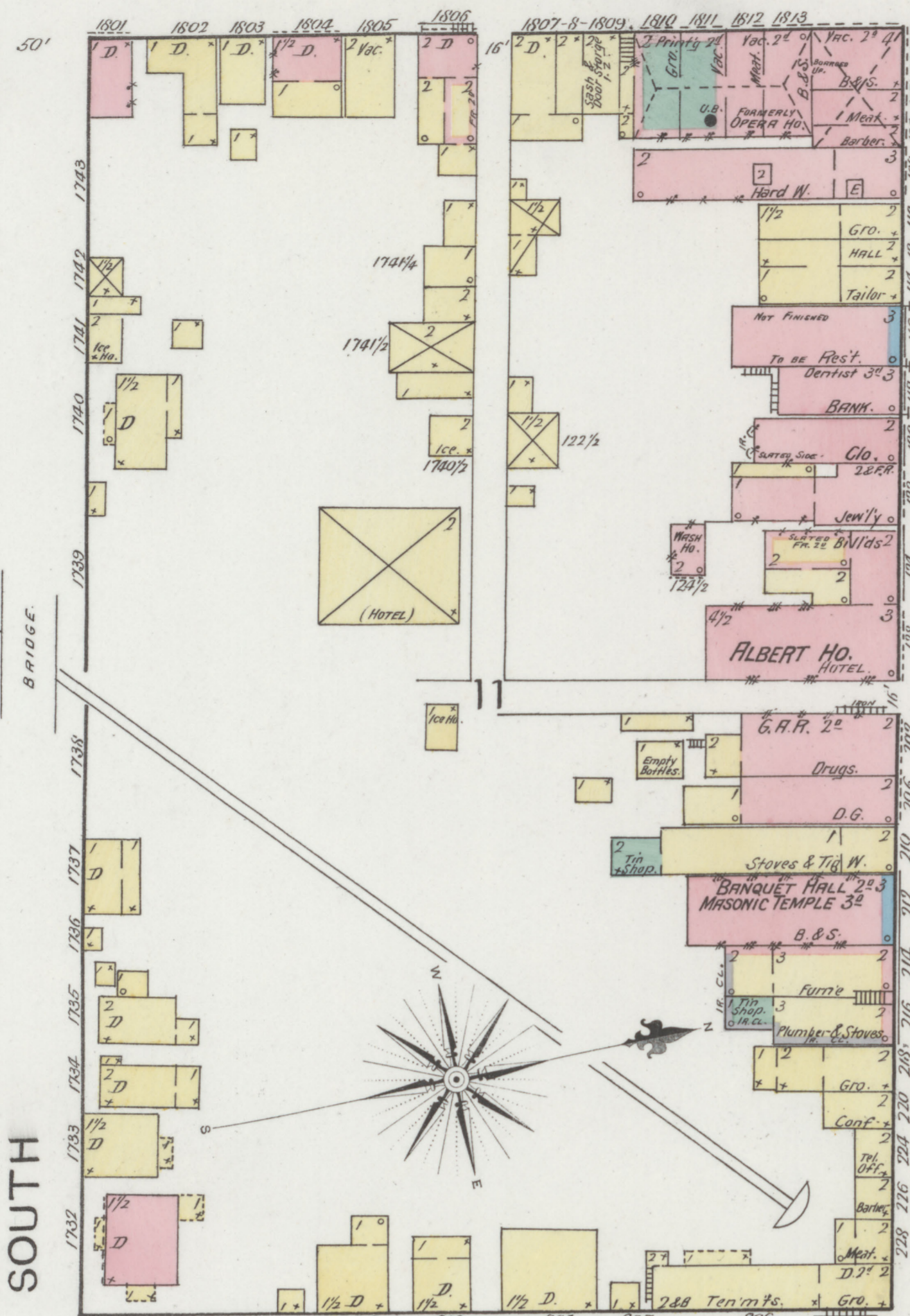


S. CHESTNUT

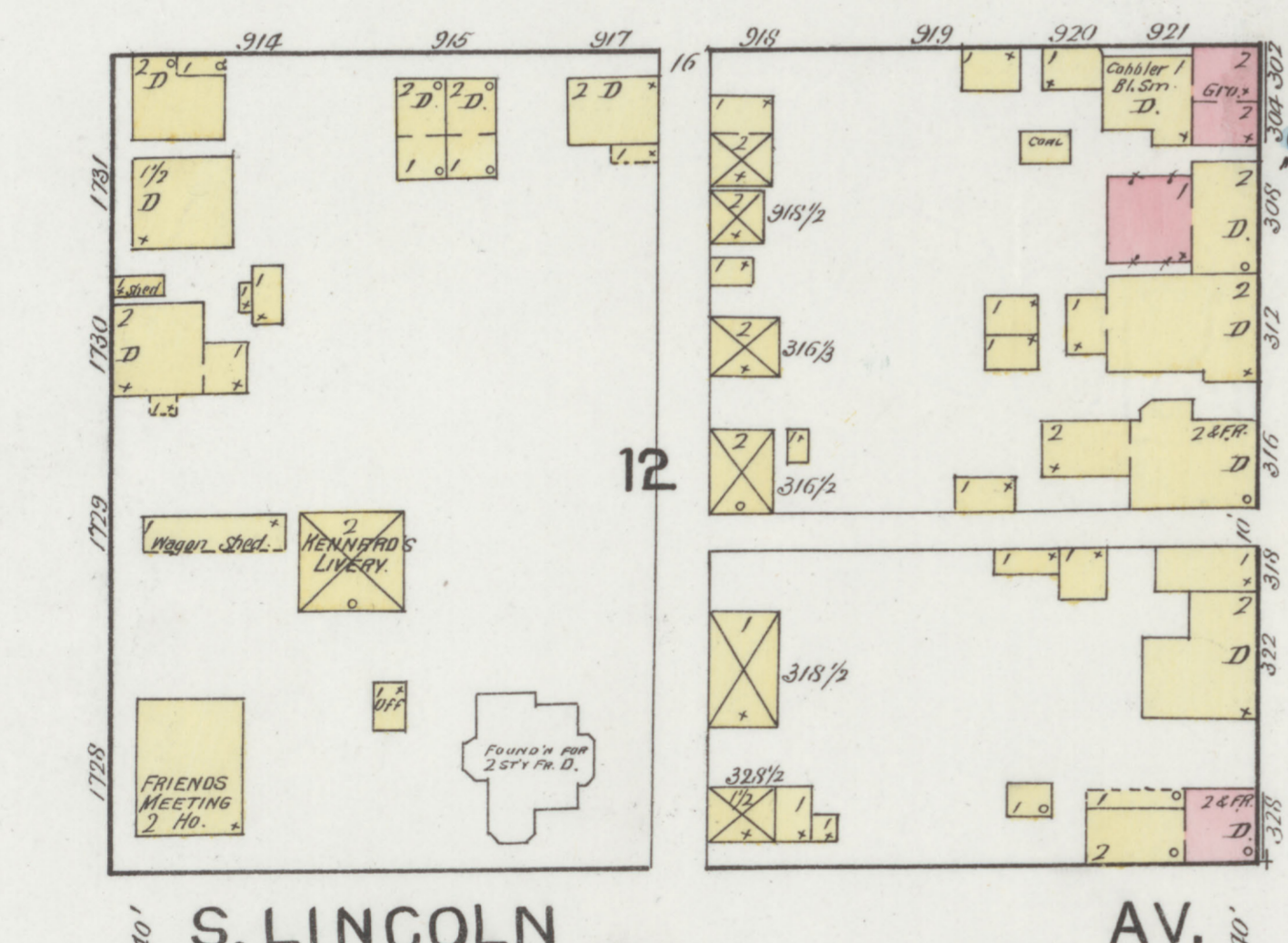
N. CHESTNUT

2

3

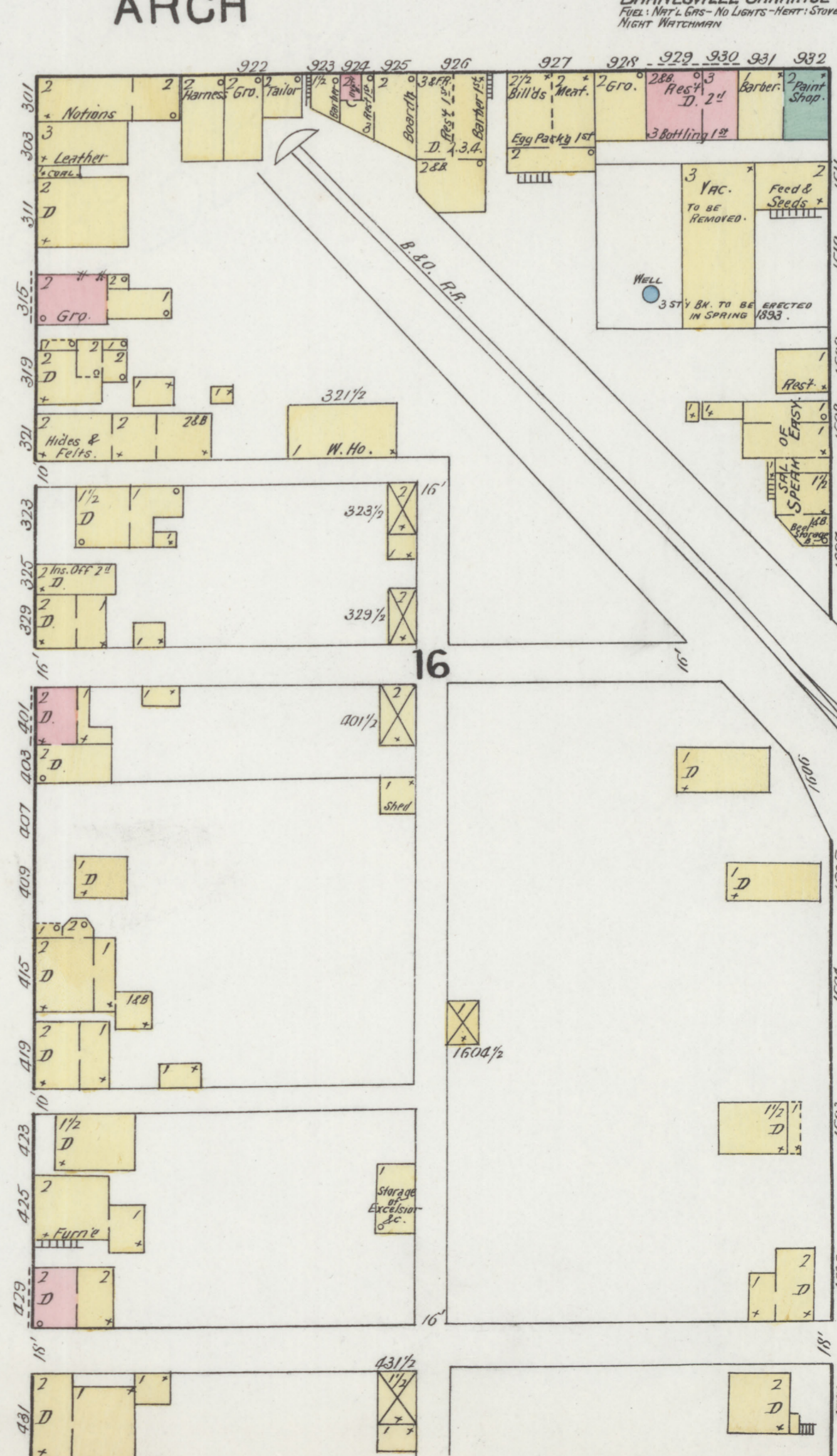


CHURCH



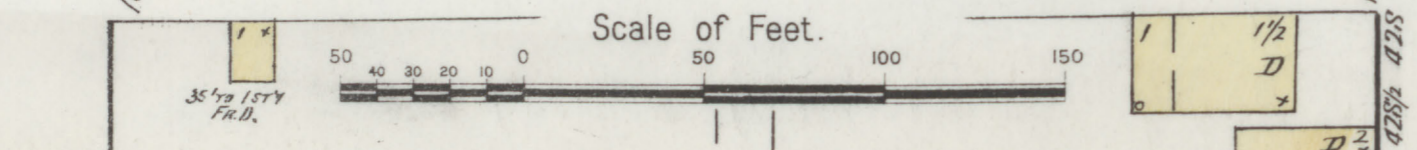
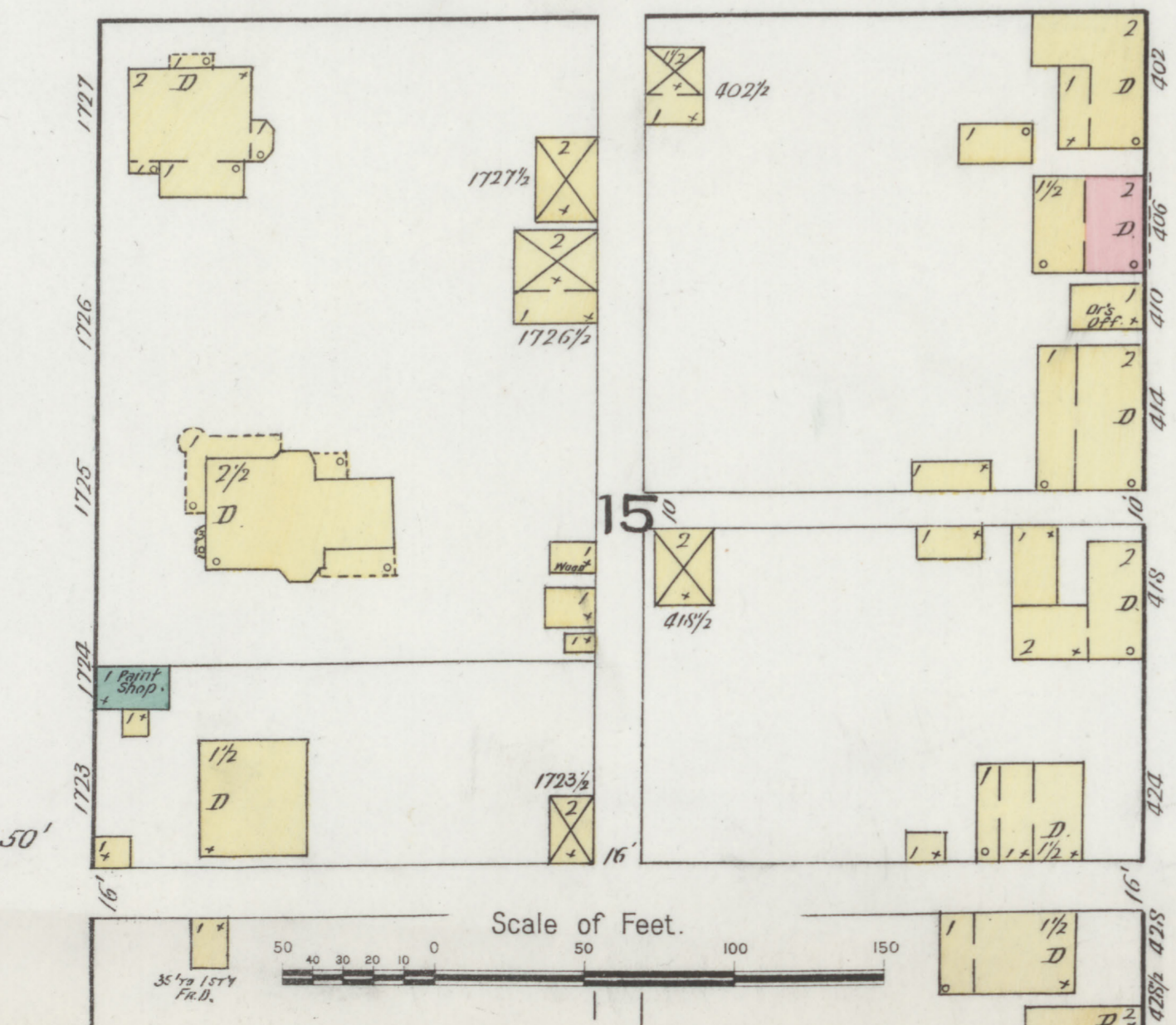
S. LINCOLN

AV.



ARCH

C.H. LITTLE, BARNESVILLE CARRIAGE WKS.



SOUTH

BROADWAY

S. CHESTNUT

REEDS ROW

ARCH

VINE

S. CHESTNUT

CEMETERY AV.

LAWSON ST.

BROADWAY OR 1ST ST.

1801 1802 1803 1804 1805 1806 1807 1808 1809 1810 1811

1709 1708 1707 1706

1249 1248 1247 1246 1245 1244 1243 1242 1241 1240 1239 1238 1237 1236 1235 1234 1233 1232 1231 1230 1229 1228 1227 1226 1225 1224 1223 1222 1221 1220 1219 1218 1217 1216 1215 1214 1213 1212 1211 1210 1209 1208 1207 1206 1205 1204 1203 1202 1201

601 602 603 604 605 606 607 608 609 610 611 612

705 704 703 702 701 700 699 698 697 696 695 694 693 692 691 690 689 688 687 686 685 684 683 682 681 680 679 678 677 676 675 674 673 672 671 670 669 668 667 666 665 664 663 662 661 660 659 658 657 656 655 654 653 652 651 650 649 648 647 646 645 644 643 642 641 640 639 638 637 636 635 634 633 632 631 630 629 628 627 626 625 624 623 622 621 620 619 618 617 616 615 614 613 612 611 610 609 608 607 606 605 604 603 602 601

1579 1578 1577 1576 1575 1574 1573 1572 1571 1570 1569 1568 1567 1566 1565 1564 1563 1562 1561 1560 1559 1558 1557 1556 1555 1554 1553 1552 1551 1550 1549 1548 1547 1546 1545 1544 1543 1542 1541 1540 1539 1538 1537 1536 1535 1534 1533 1532 1531 1530 1529 1528 1527 1526 1525 1524 1523 1522 1521 1520 1519 1518 1517 1516 1515 1514 1513 1512 1511 1510 1509 1508 1507 1506 1505 1504 1503 1502 1501

1517 1518 1519 1520 1521 1522 1523 1524 1525 1526 1527 1528 1529 1530

1711 1710 1709 1708 1707 1706 1705 1704 1703 1702 1701 1700 1699 1698 1697 1696 1695 1694 1693 1692 1691 1690 1689 1688 1687 1686 1685 1684 1683 1682 1681 1680 1679 1678 1677 1676 1675 1674 1673 1672 1671 1670 1669 1668 1667 1666 1665 1664 1663 1662 1661 1660 1659 1658 1657 1656 1655 1654 1653 1652 1651 1650 1649 1648 1647 1646 1645 1644 1643 1642 1641 1640 1639 1638 1637 1636 1635 1634 1633 1632 1631 1630 1629 1628 1627 1626 1625 1624 1623 1622 1621 1620 1619 1618 1617 1616 1615 1614 1613 1612 1611 1610 1609 1608 1607 1606 1605 1604 1603 1602 1601

1571 1572 1573 1574 1575 1576 1577 1578 1579 1580 1581 1582 1583 1584 1585 1586 1587 1588 1589 1590 1591 1592 1593 1594 1595 1596 1597 1598 1599 1600

1701 1702 1703 1704 1705 1706 1707 1708 1709 1710 1711 1712 1713 1714 1715 1716 1717 1718 1719 1720 1721 1722 1723 1724 1725 1726 1727 1728 1729 1730 1731 1732 1733 1734 1735 1736 1737 1738 1739 1740 1741 1742 1743 1744 1745 1746 1747 1748 1749 1750 1751 1752 1753 1754 1755 1756 1757 1758 1759 1760 1761 1762 1763 1764 1765 1766 1767 1768 1769 1770 1771 1772 1773 1774 1775 1776 1777 1778 1779 1780 1781 1782 1783 1784 1785 1786 1787 1788 1789 1790 1791 1792 1793 1794 1795 1796 1797 1798 1799 1800

501 502 503 504 505 506 507 508 509 510 511 512 513 514 515

1701 1702 1703 1704 1705 1706 1707 1708 1709 1710 1711 1712 1713 1714 1715 1716 1717 1718 1719 1720 1721 1722 1723 1724 1725 1726 1727 1728 1729 1730 1731 1732 1733 1734 1735 1736 1737 1738 1739 1740 1741 1742 1743 1744 1745 1746 1747 1748 1749 1750 1751 1752 1753 1754 1755 1756 1757 1758 1759 1760 1761 1762 1763 1764 1765 1766 1767 1768 1769 1770 1771 1772 1773 1774 1775 1776 1777 1778 1779 1780 1781 1782 1783 1784 1785 1786 1787 1788 1789 1790 1791 1792 1793 1794 1795 1796 1797 1798 1799 1800

1571 1572 1573 1574 1575 1576 1577 1578 1579 1580 1581 1582 1583 1584 1585 1586 1587 1588 1589 1590 1591 1592 1593 1594 1595 1596 1597 1598 1599 1600

1701 1702 1703 1704 1705 1706 1707 1708 1709 1710 1711 1712 1713 1714 1715 1716 1717 1718 1719 1720 1721 1722 1723 1724 1725 1726 1727 1728 1729 1730 1731 1732 1733 1734 1735 1736 1737 1738 1739 1740 1741 1742 1743 1744 1745 1746 1747 1748 1749 1750 1751 1752 1753 1754 1755 1756 1757 1758 1759 1760 1761 1762 1763 1764 1765 1766 1767 1768 1769 1770 1771 1772 1773 1774 1775 1776 1777 1778 1779 1780 1781 1782 1783 1784 1785 1786 1787 1788 1789 1790 1791 1792 1793 1794 1795 1796 1797 1798 1799 1800

1571 1572 1573 1574 1575 1576 1577 1578 1579 1580 1581 1582 1583 1584 1585 1586 1587 1588 1589 1590 1591 1592 1593 1594 1595 1596 1597 1598 1599 1600

1701 1702 1703 1704 1705 1706 1707 1708 1709 1710 1711 1712 1713 1714 1715 1716 1717 1718 1719 1720 1721 1722 1723 1724 1725 1726 1727 1728 1729 1730 1731 1732 1733 1734 1735 1736 1737 1738 1739 1740 1741 1742 1743 1744 1745 1746 1747 1748 1749 1750 1751 1752 1753 1754 1755 1756 1757 1758 1759 1760 1761 1762 1763 1764 1765 1766 1767 1768 1769 1770 1771 1772 1773 1774 1775 1776 1777 1778 1779 1780 1781 1782 1783 1784 1785 1786 1787 1788 1789 1790 1791 1792 1793 1794 1795 1796 1797 1798 1799 1800

HRGUE, WOODWARD & CO.
Planing Mill
Lumber
No. WATCHMAN SMALL HOSE 100 LONG.
HEAT: STOVES NO LIGHT
POWER: STEAM FUEL: COAL
& SHARPS. HAND FORCE PUMP
2 PLANERS. 1 STICKER. 2 Saws & JOINER. 1ST
1 TENONER. 1 BIG SAW. 1 CUT OFF SAW.
1 SHAPER. 1 SLIT MACH.
1 MORTISER & 1 SAND PAPER MACH 2^o

HOTEL
BURKHART 1722
1806
1721
1809
1720
1810
1811
BUNNELL & HILLES
Grain W. Ho.
G. HALL
Repair Shop
T. & A. ROGERS
No. WATCHMAN. NO LIGHTS.
HEAT: STEAM
FUEL: COAL & SHARVINGS.
NO HOSE. BLOWER TO MACHS 15' ONLY.
1ST 2 PLANERS. 1 1/2" SAW
1 SLIT SAW. 1 CUT OFF SAW
2^o SHAPER. BAND SAW
TENONER JOINER
MORTISER. 1/4" SAW
BIG SAW. BOWING MACH
CUT OFF SAW. MOULDER &
2 LATHEs 2^o

R.M.E. CHURCH.

BARNESVILLE GAS & ELEC. LIGHT CO.
ILLUMINATING GAS
MADE FROM COAL
GAS USED TO RUN
ELEC. LIGHT STATION
WARREN MILLS
S.C. HILLES & BROS.
1 HERCULES SCOURER 1ST
10 PAIRS OF ROLLS. 1 CORN BURR 2^o
1 WHEAT SCOURER 3^o
1 RECEIVING SEPARATOR. 1 CRANSON SCOURER 4^o
FUEL: COAL. LIGHT OIL. LANTERNS. NO WATCHMAN.
POWER: STEAM. NO HOSE. BBLs & PAILS ON EACH FL.

BARLOW BROS
BERRY Basket Mks.
No. WATCHMAN. FUEL: COAL.
HEAT: OIL LANTERNS.
HEAT STOVES.

W. H. HOBBS
Washing Machines.
HEAT: STOVE
NO LIGHT. FUEL: COAL.
NO WATCHMAN.
NO FIRE ARMS.

BUCKEYE ADVERTISING CO.
1 NIGHT WATCHMAN
LIGHT: GAS
FUEL: COAL. UNDER BL.
HEAT: NATL. GAS STOVES
HAND FORCE PUMP &
40 HOSE.

Scale of Feet.
50 100 150

No EXPOSURE.

No EXPOSURE.

No EXPOSURE.

