



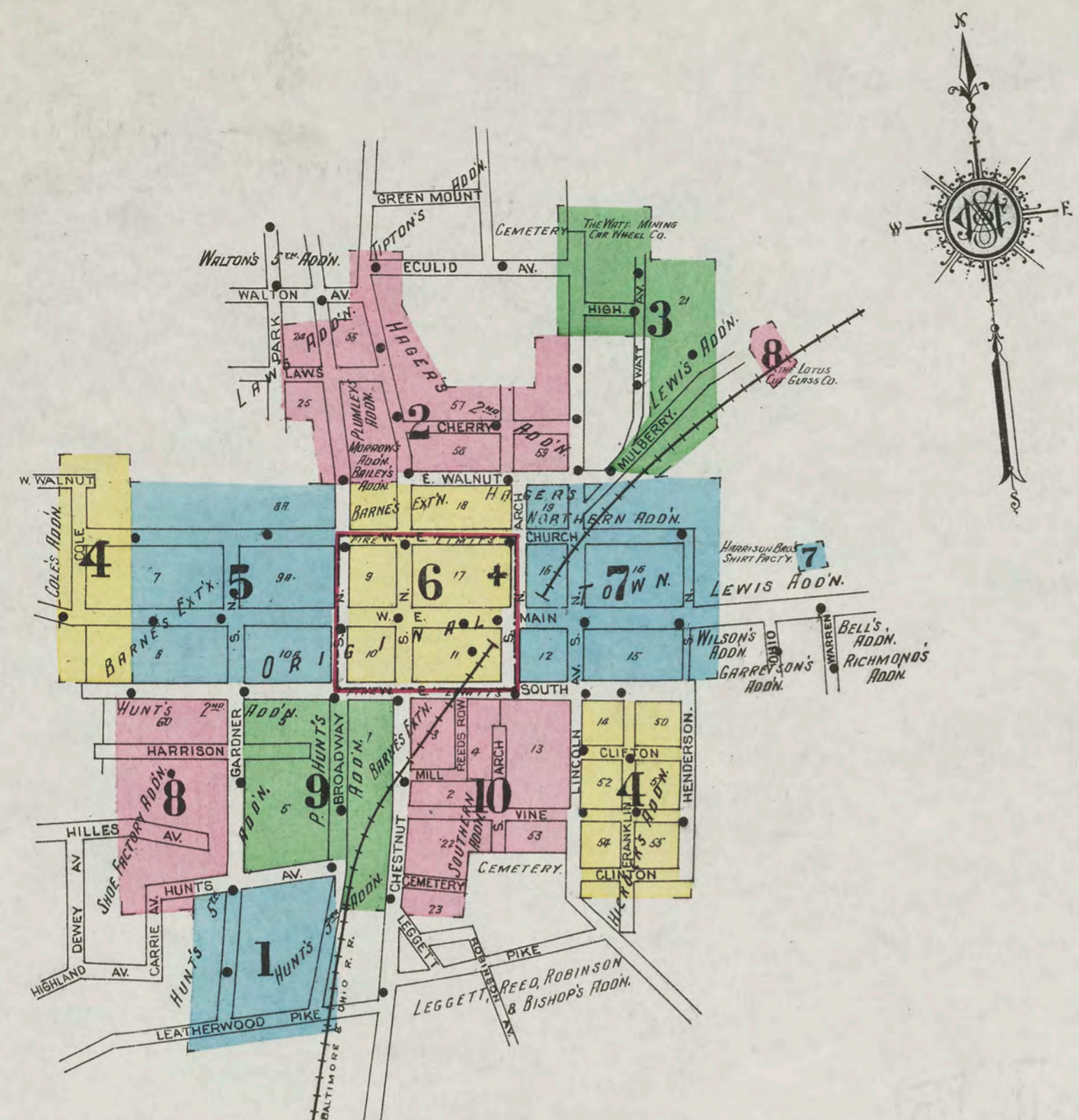
WATER FACILITIES:

Direct pressure system - 1 Fairbanks-Morse compound duplex pump & 1 Snow pump each 10" x 20" x 16" capacity, 1000000 gals. each per 24 hours - Pumps draw from reservoir, made by dam in creek valley - Area of reservoir 27 acres, capacity 11700000 gals. filled by natural drainage from water shed of about 80 acres in extent - Pump station is small frame building 30' x 50' situated 1/2 miles S.E. of city 180' below level of city building, 1 pump only run at a time with 12' mains in reserve, 10" intake from reservoir to well, 12" pipe from well to pumps, 12" supply pipe from pumps to city - About 8 miles 4"-12" mains mostly 6" - 84 double hydrants - 4 dead ends - Average daily consumption about 34,000 gals. Domestic pressure 30 to 60 lbs. fire pressure 30 to 100 lbs. at City Hall - System installed 1906.

FIRE DEPT:

One 3rd class American-LaFrance steamer - 1 Seagrave hook & ladder wagon, 154' of ladders drawn by hand - 2 hand hose carts, 1400' 2 1/2" hose - One 5 gal. Holloway hand chemical, one 3 gal. Holloway hand chemical - One 6 gal. Champion hand chemical - 1 Chief & 25 volunteer firemen paid \$1.00 per fire each - Steamer used only when city system fails - 20 cisterns from 300 to 700 barrels distributed in city (gradually being filled up) - Fire chief lives on 2nd floor City Bldg - City has use of 500' 2 1/2" hose owned by Watt Mining Car Wheel Co. & kept in small house on corner of Watt Av & High St - fire alarm: bell at City Bldg & fire whistle at Watt Mining Car Wheel Co. Grades: as noted - Streets paved - Public lights electric.

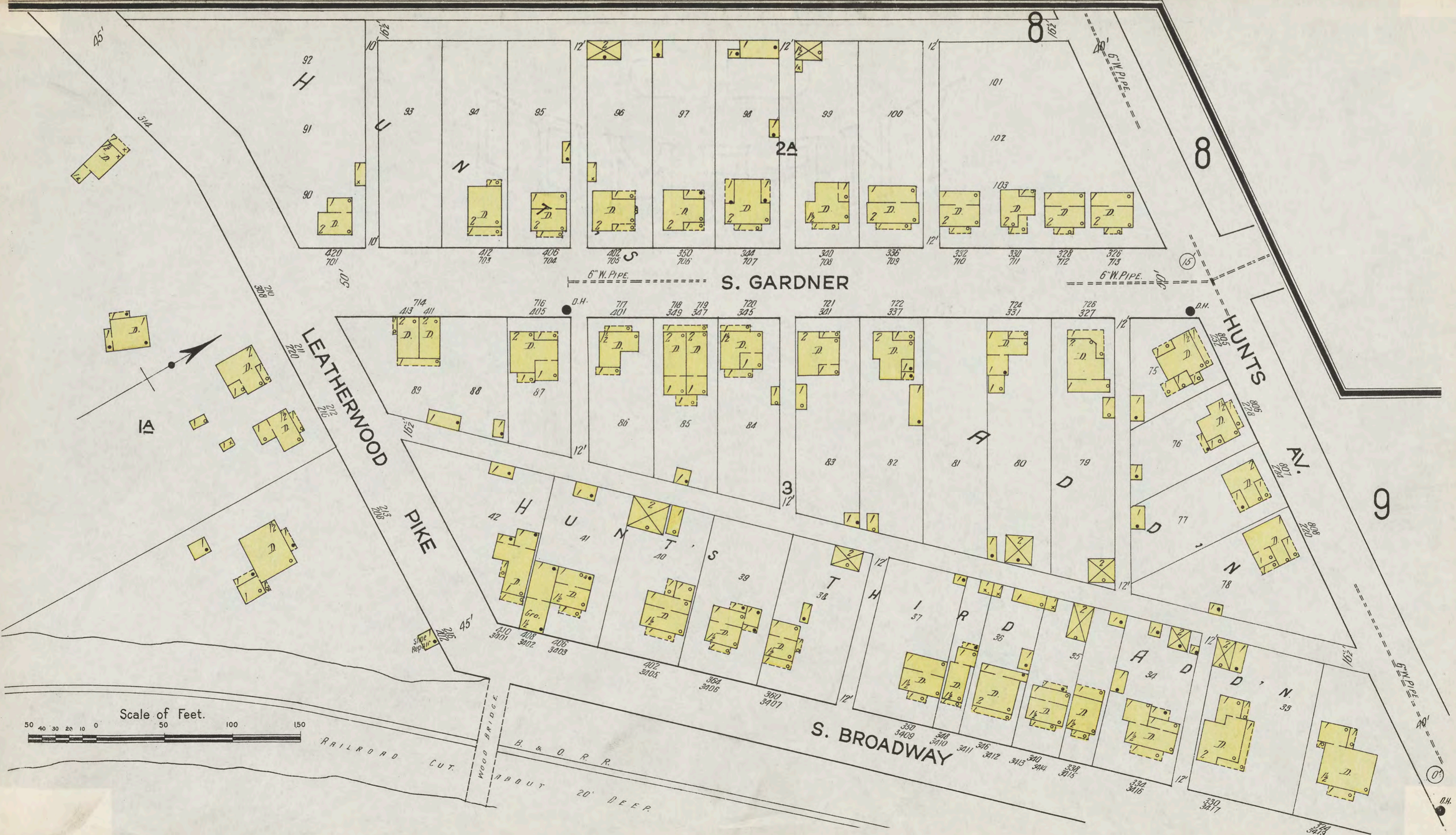
FEB 25 1915 C.G.F. 29090

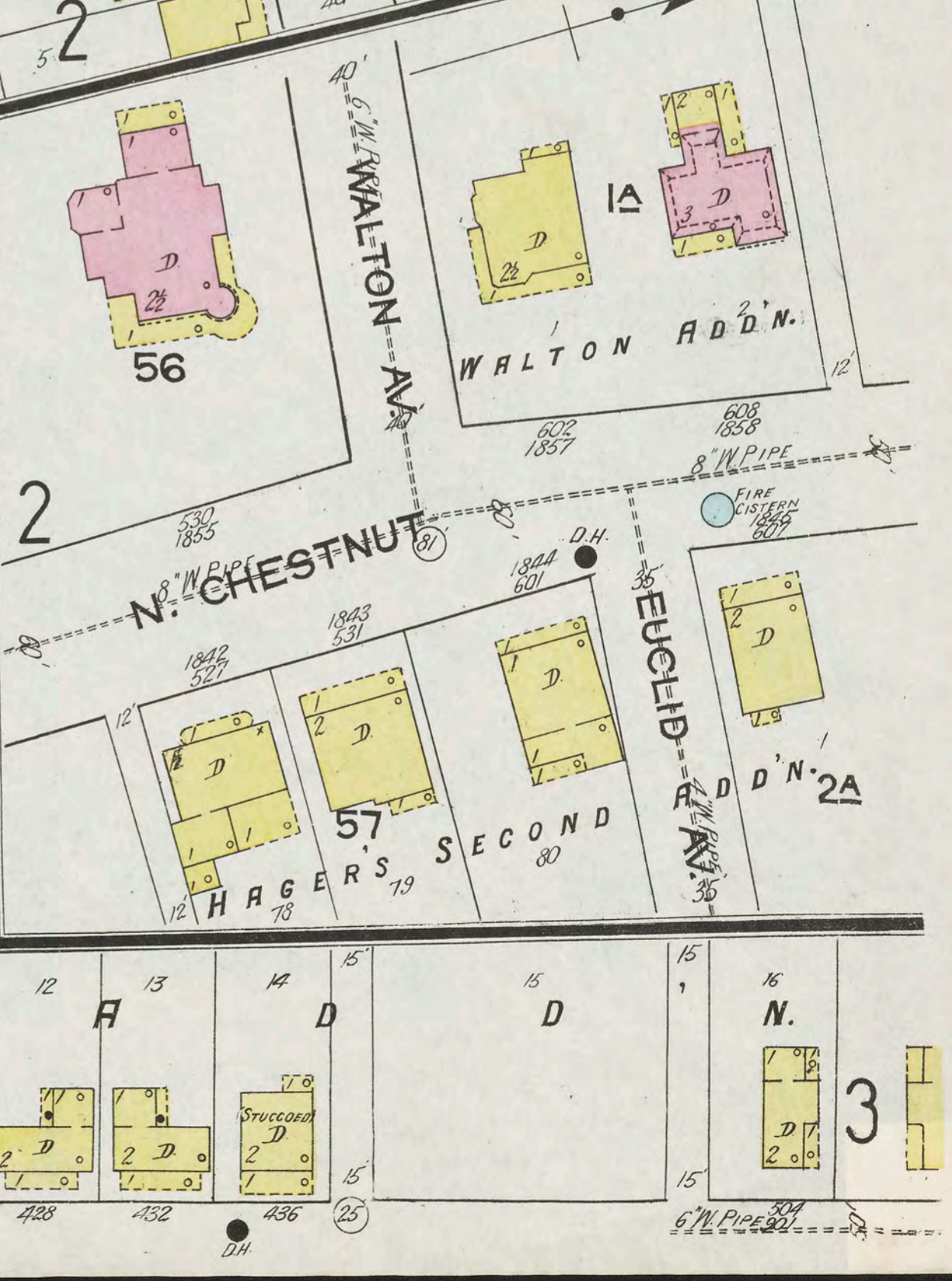
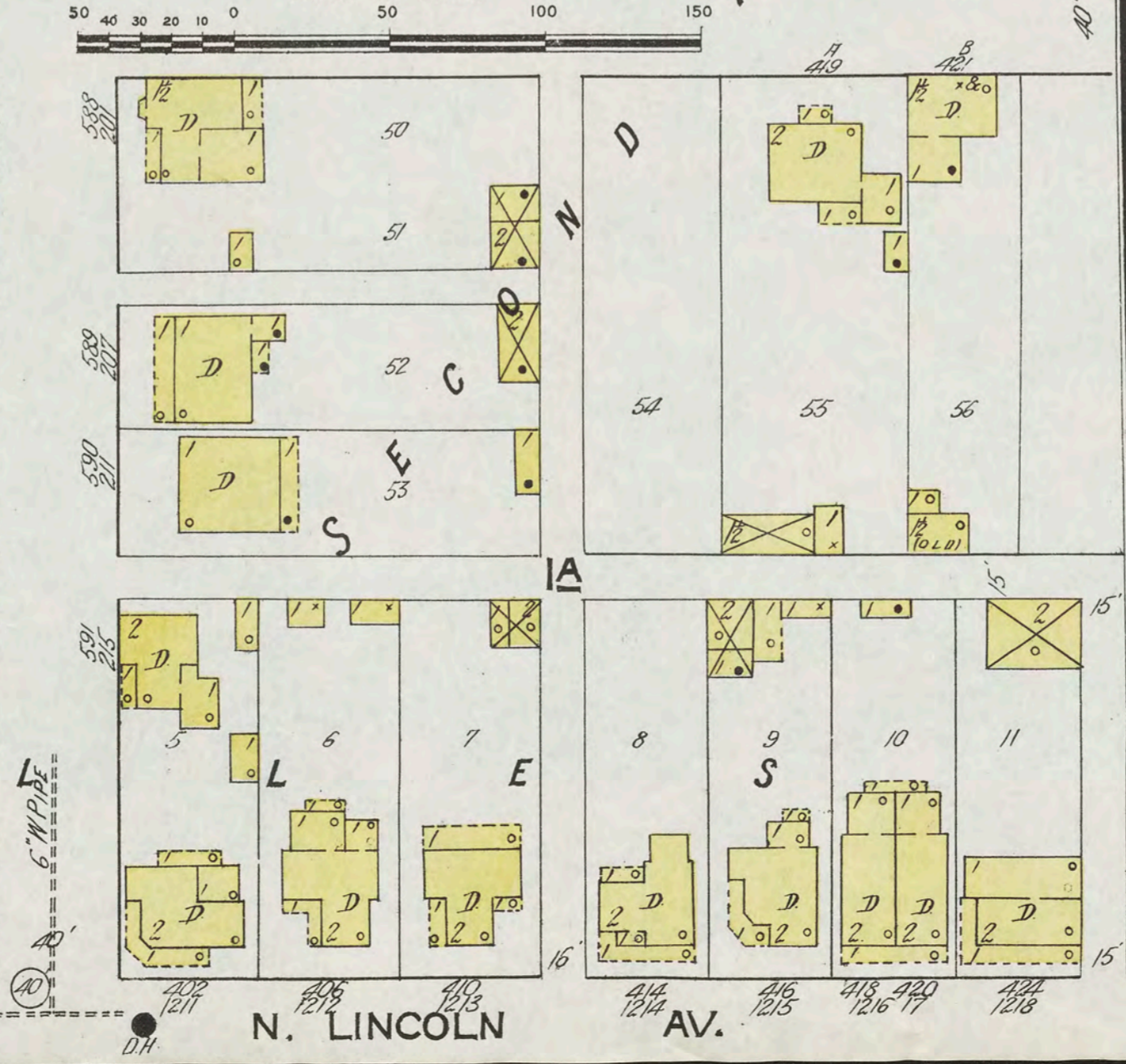
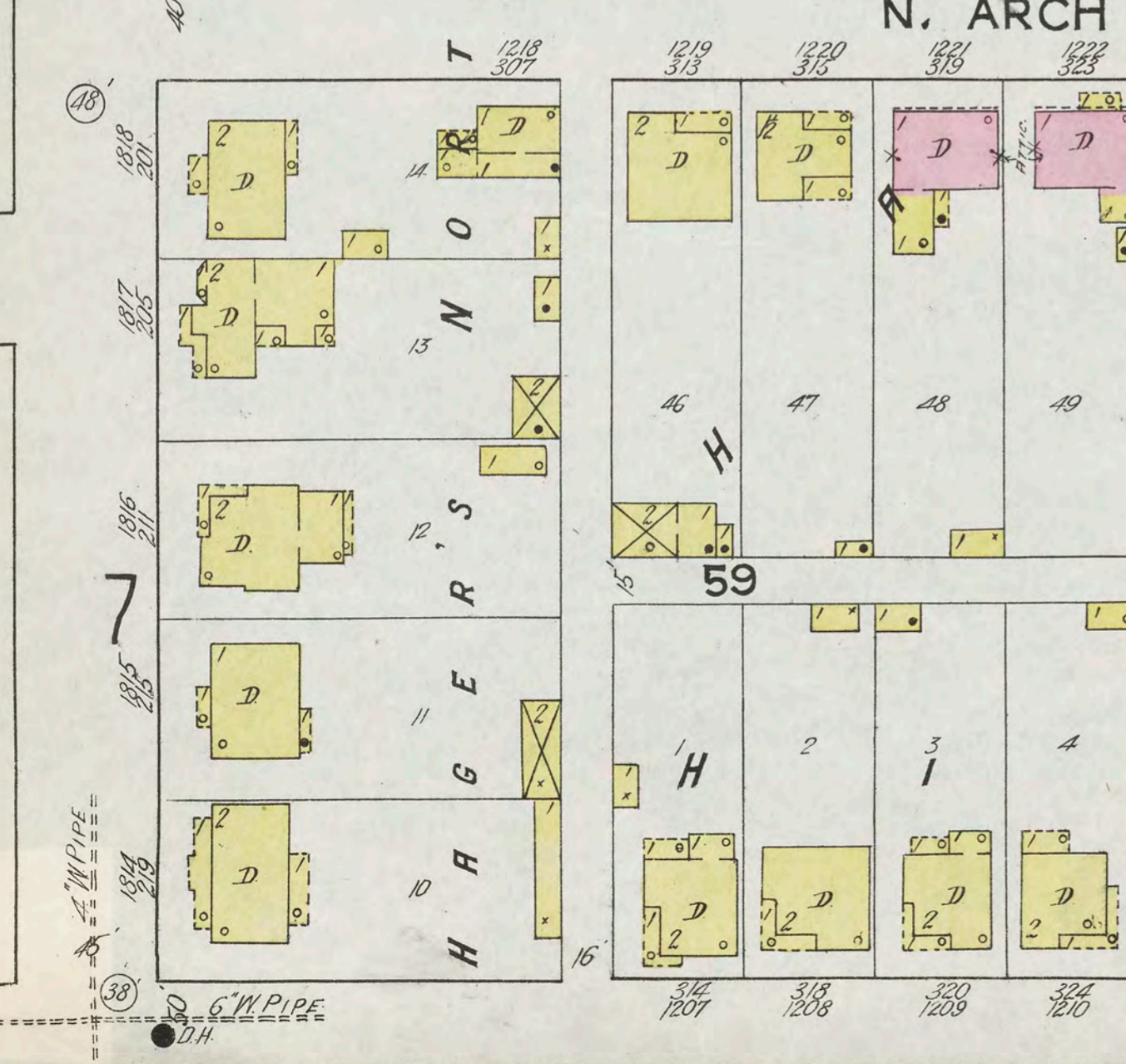
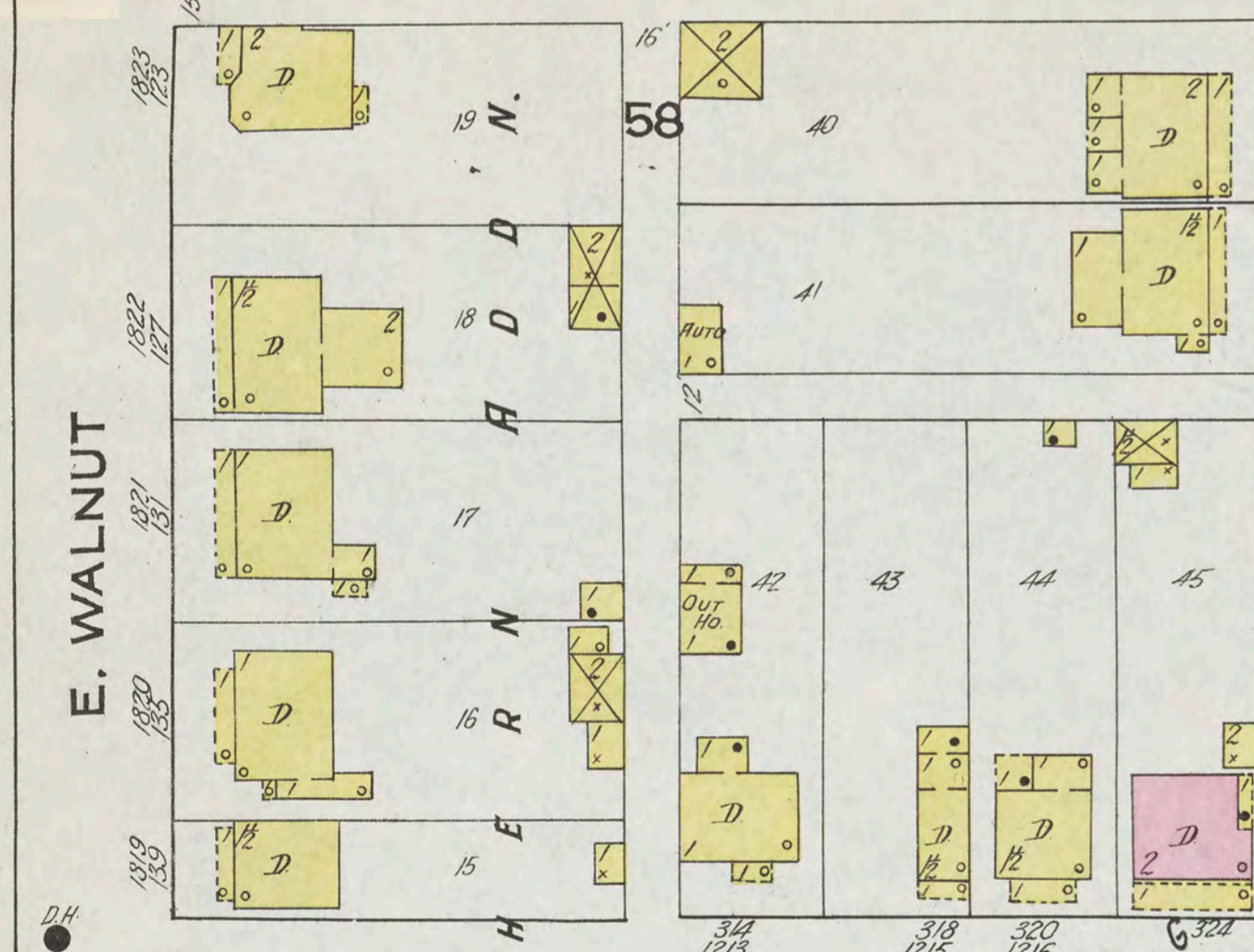
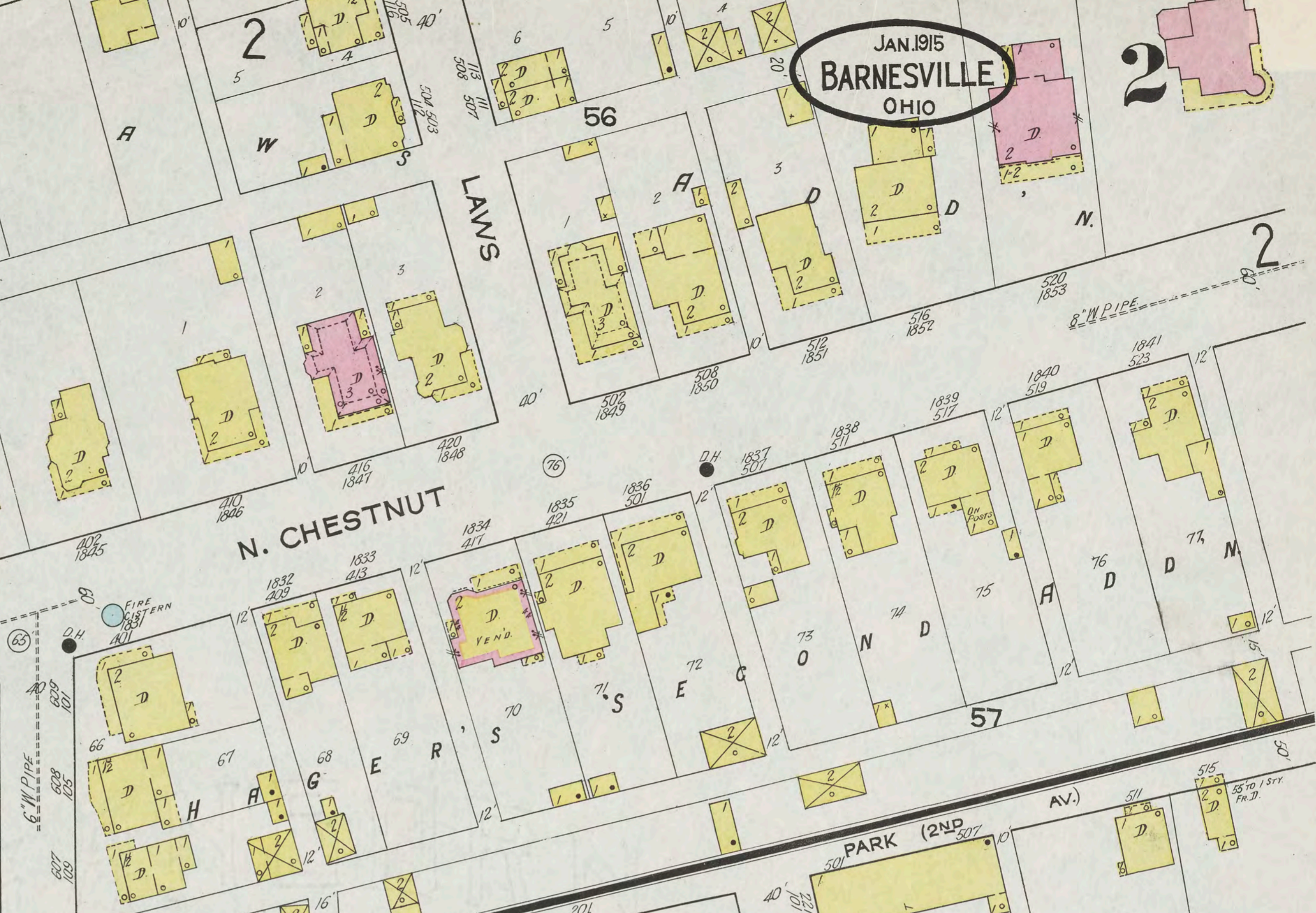
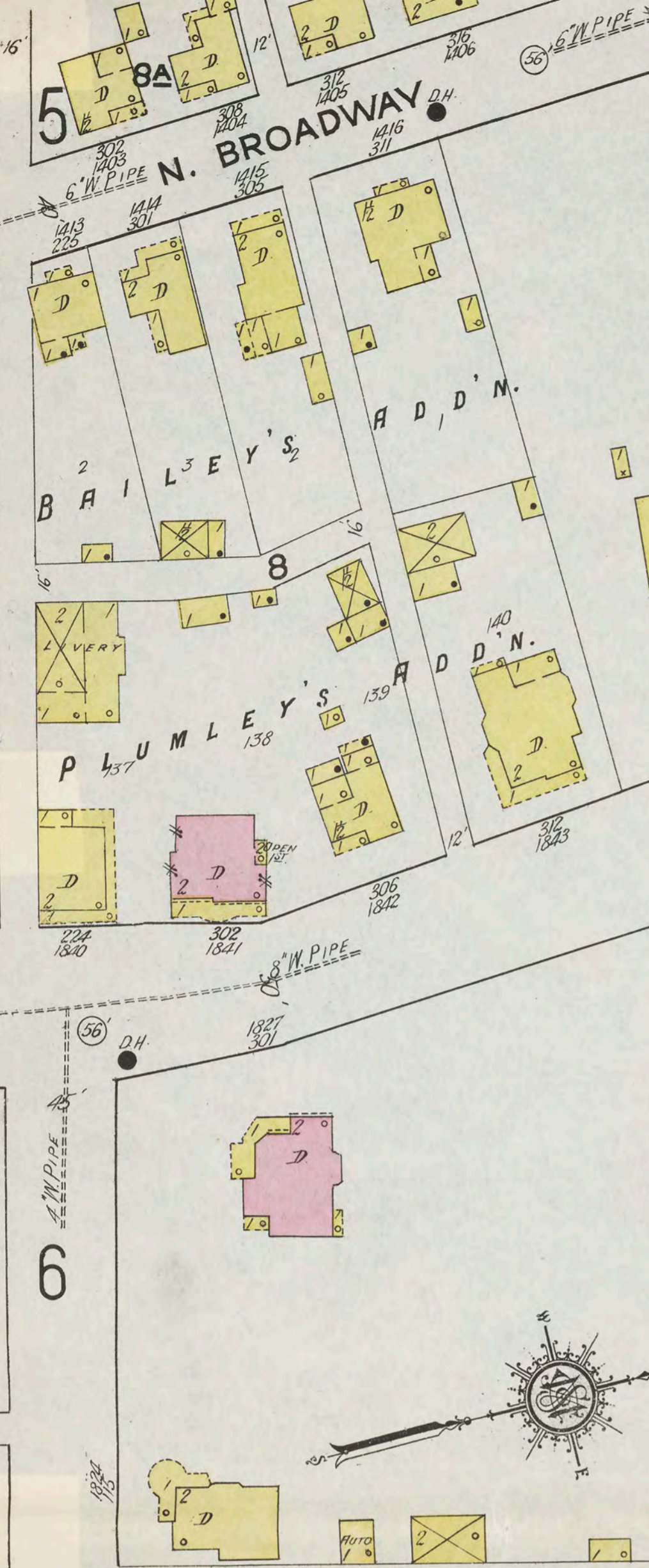
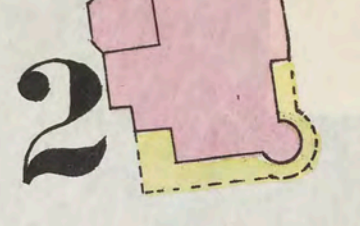


INDEX

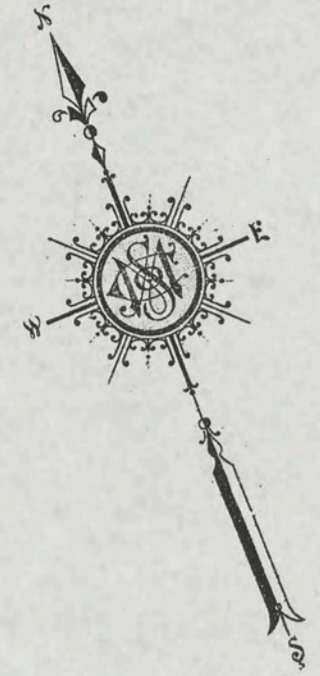
Table with columns for STREETS, SHEET, and SPECIALS. It lists street names and their corresponding sheet numbers, along with specific locations for various businesses and public buildings.

KEY: A legend defining symbols for various building features such as fire walls, roofs, doors, and windows. It also includes a note about the location of the town in the state of Ohio.

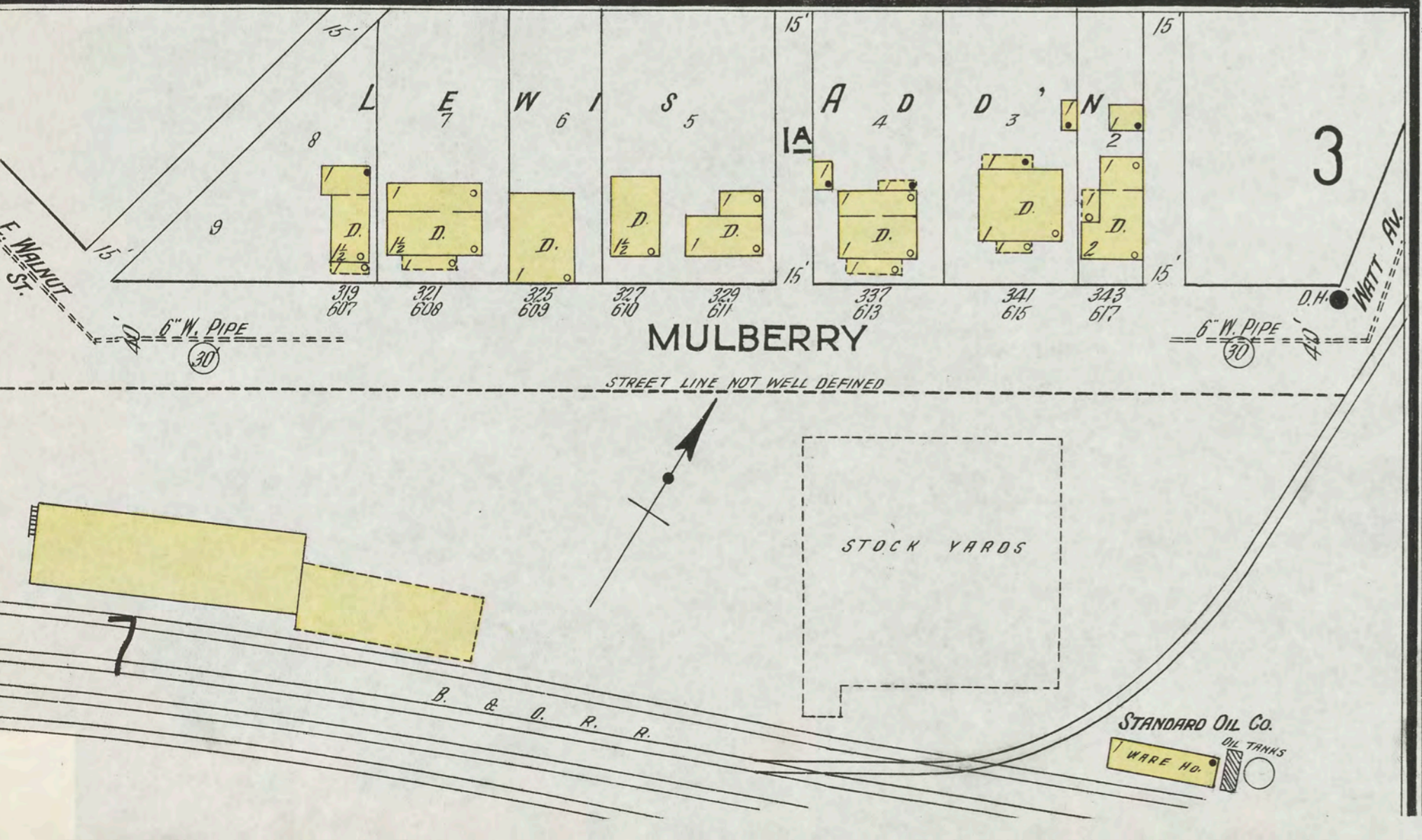
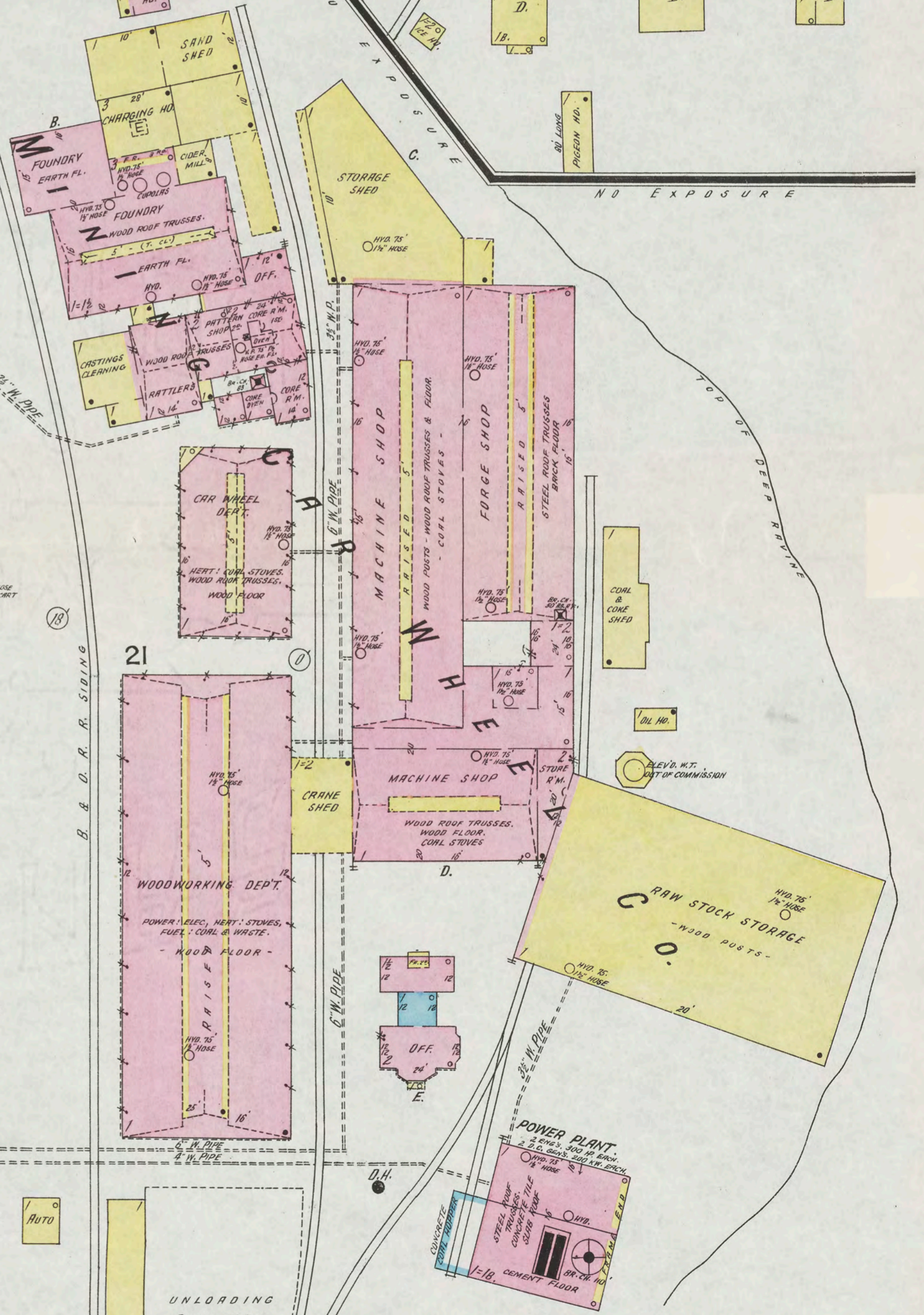
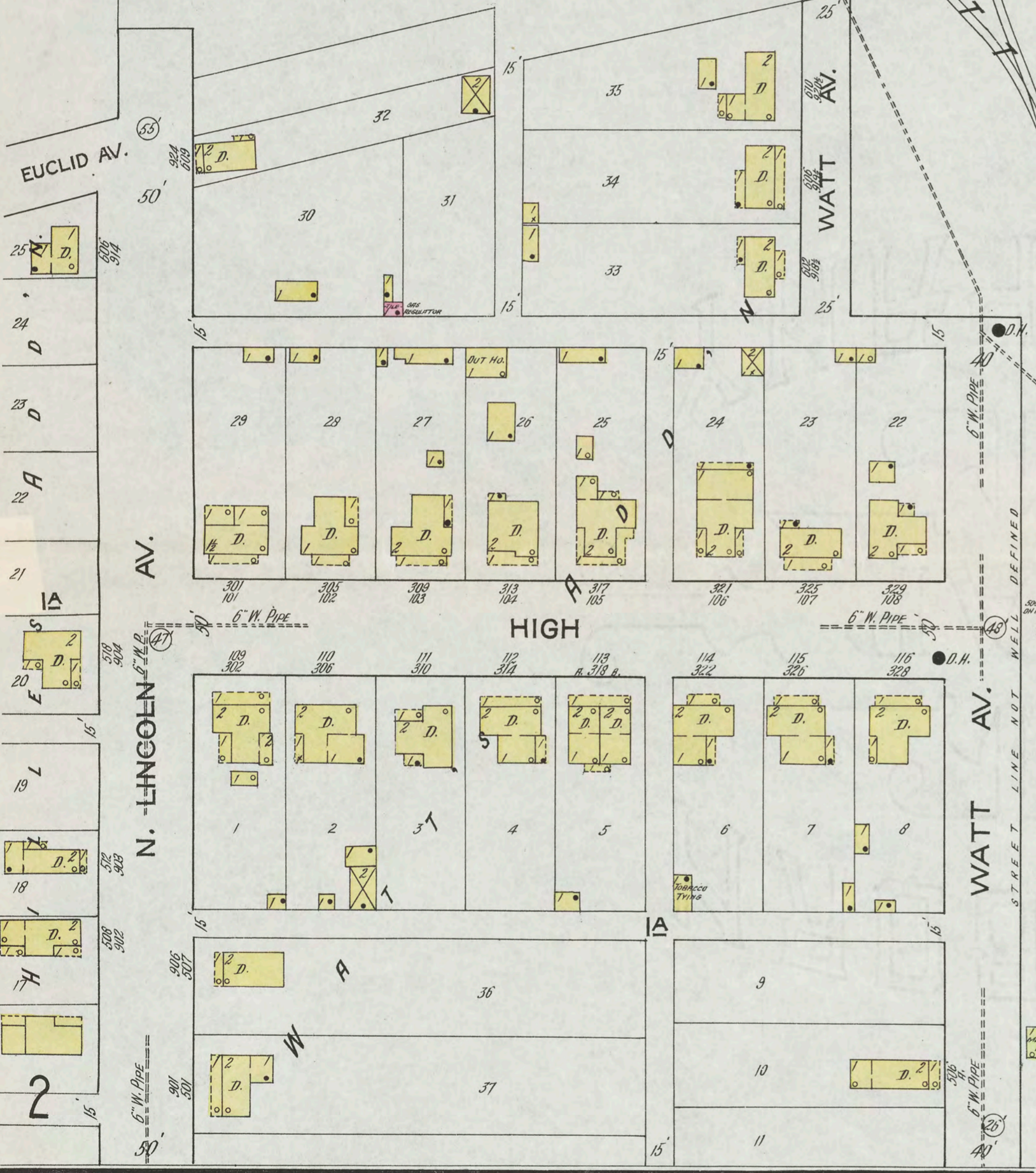
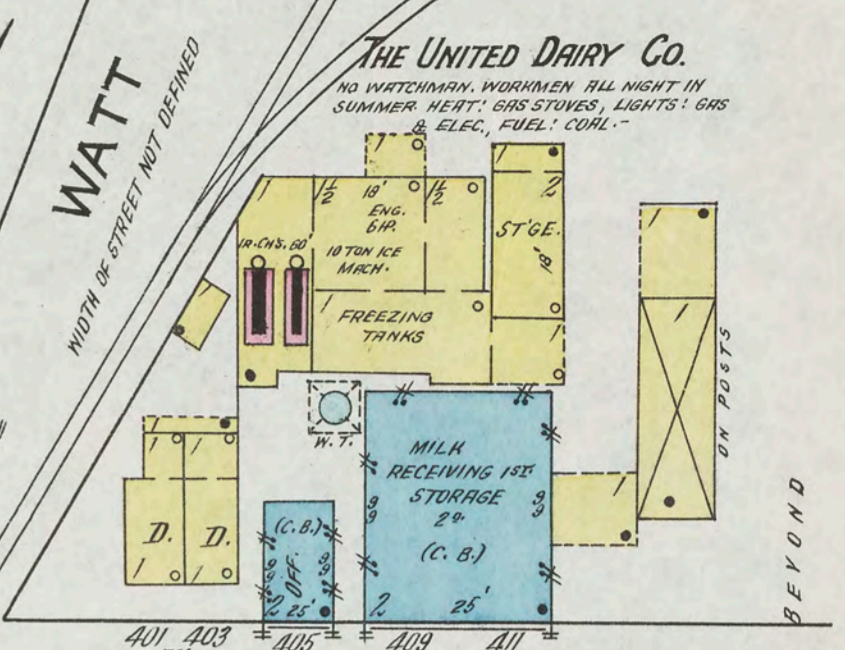
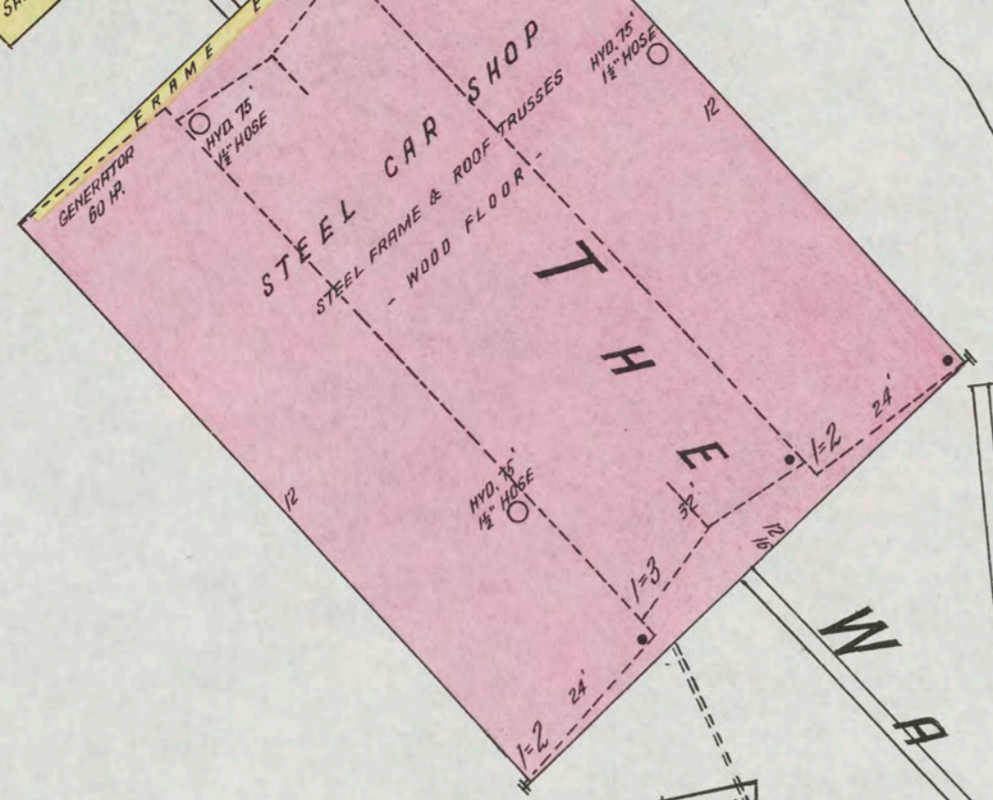




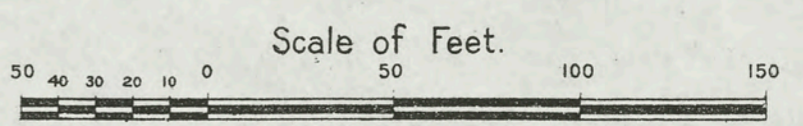
JAN. 1915
BARNESVILLE
OHIO



CEMETERY



MFRS. OF MINE, ORE, QUARRY, & INDUSTRIAL CARS.
NIGHT, SUNDAY, & HOLIDAY WATCHMAN. WAGONNER MAGNETO CLOCK, 15 STATIONS,
REPORTS HOURLY FROM 5 A.M. TO 5 P.M. - HEAT: COAL & GAS STOVES EXCEPT OFFICE
WHICH HAS STERN, LIGHTS: ELEC. (I.E.P.) & GAS, POWER; ELEC.; FUEL; COAL,
1500' 1/2" APPROVED HOSE ATT'D. TO H.V.O.'S AS NOTED, 300' 2 1/2" STANDARD FIRE HOSE
IN SMALL HOUSE (HIGH & WITT AV.), 3 1/2 H.V.O.'S (CITY) IN NEAR VICINITY. CHEM. EXTING. O.U.T.O.



STANDARD OIL CO.
OIL TANKS
WARE HO.

3



7 E. SOUTH

W. WALNUT

JAN. 1915
BARNESVILLE
OHIO

CLIFTON

W. CHURCH

VINE

W. MAIN

S. LINCOLN

S. HENDERSON

CLINTON

W. SOUTH

Scale of Feet.

8

G. L. CORBIN, FLORIST
 HORT. HOT. WATER.
 FUEL OILS - LIGHTS REPS.
 GREEN HOS.
 GLASS REPS.

CHAS. ELLIS & SON
 ICE CREAM FACTORY
 POWER & LIGHTS ELEC.

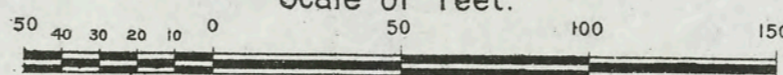
GRAN. REGISTER

STONE CALLER

B
F
R

NORTHERN & ADDN.

COLE



JAN. 1915
BARNESVILLE
OHIO



NORTHERN ADD'N.

8A

8A

CHRISTIAN CHURCH
HEAT: FURNACE
LIGHTS: ELECTRIC
20 TO ENDS.

W. CHURCH

PUBLIC SCHOOL
BASKET BALL HALL 50' x 120'

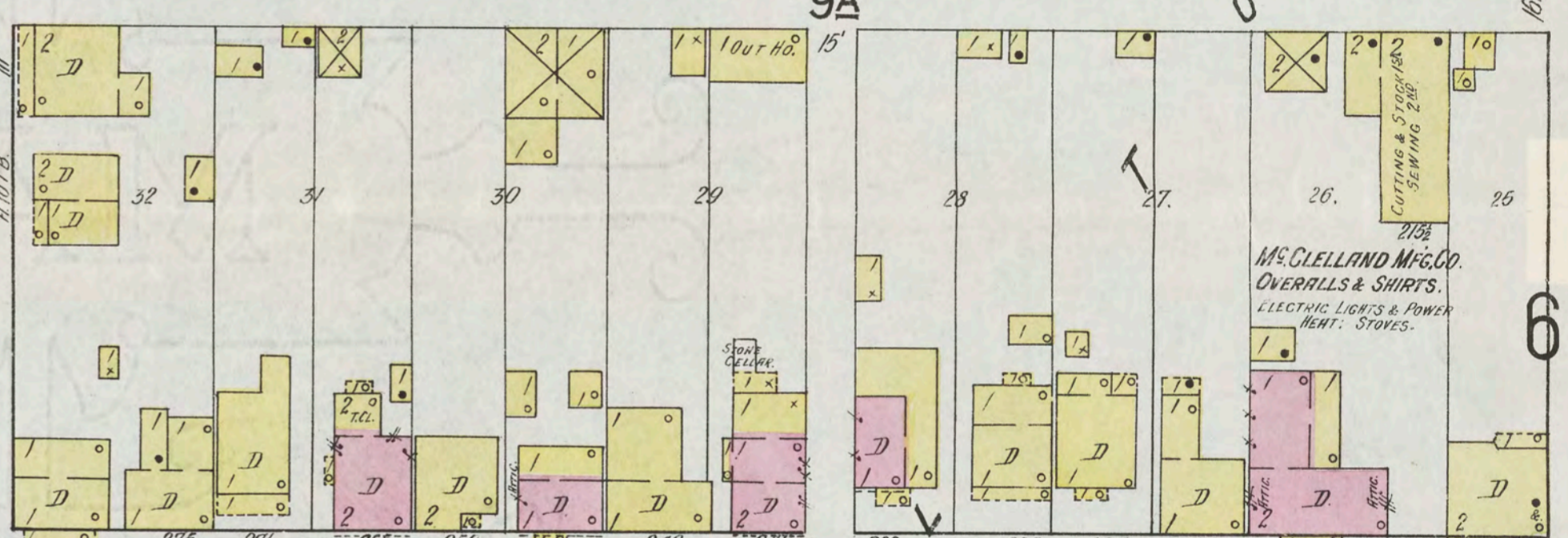
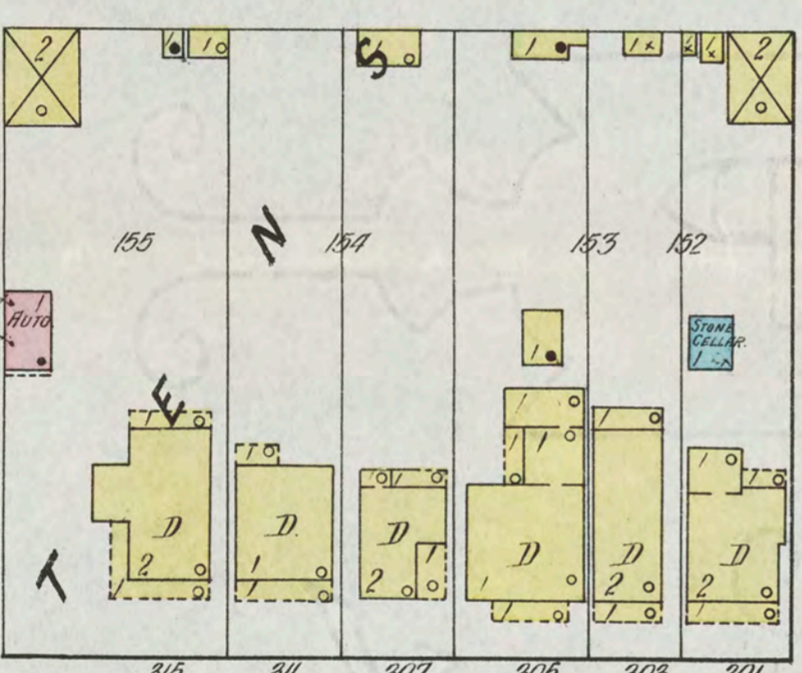
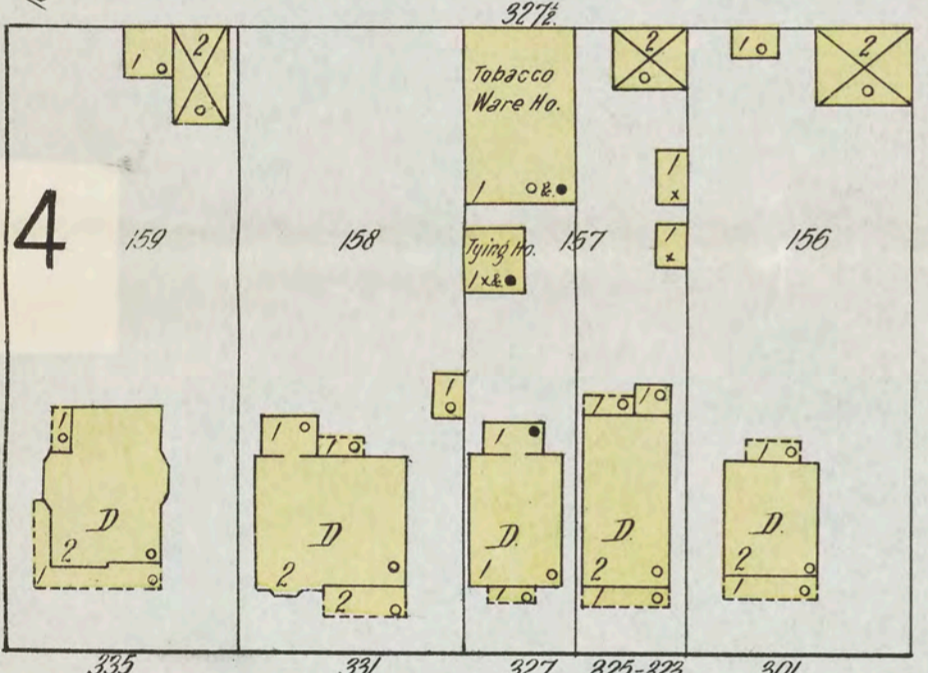
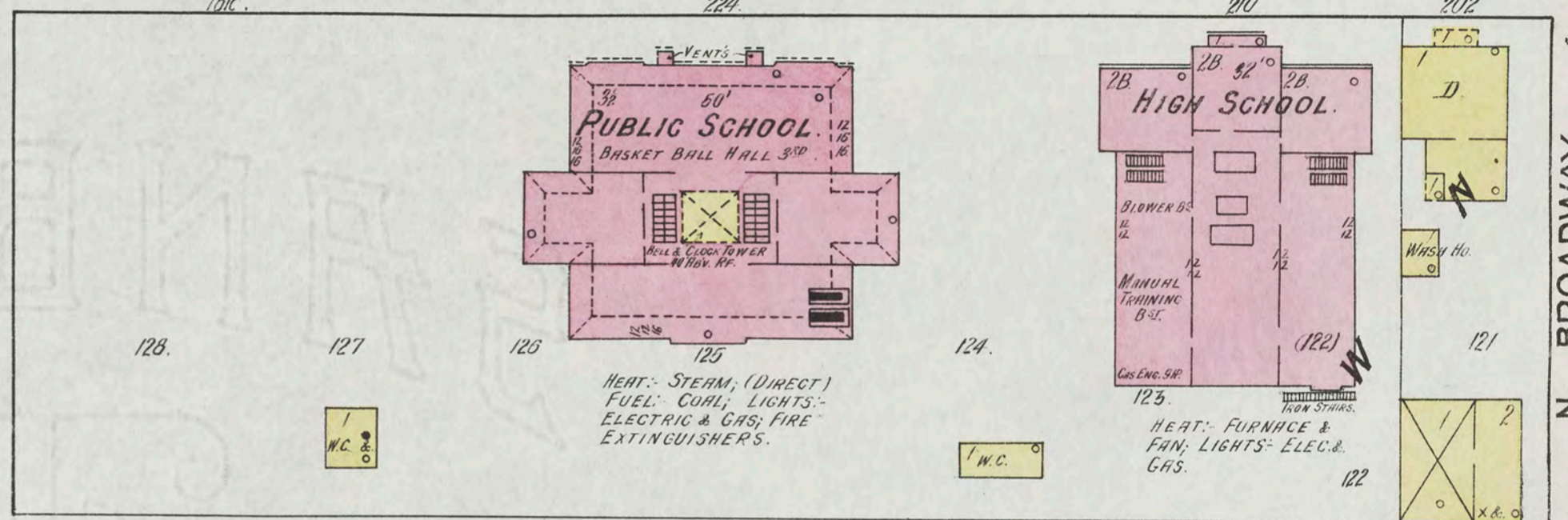
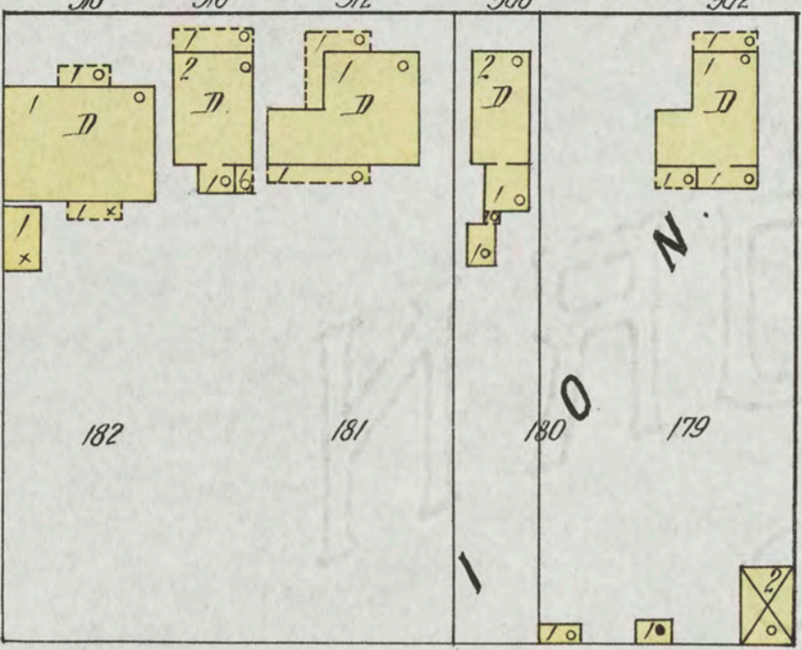
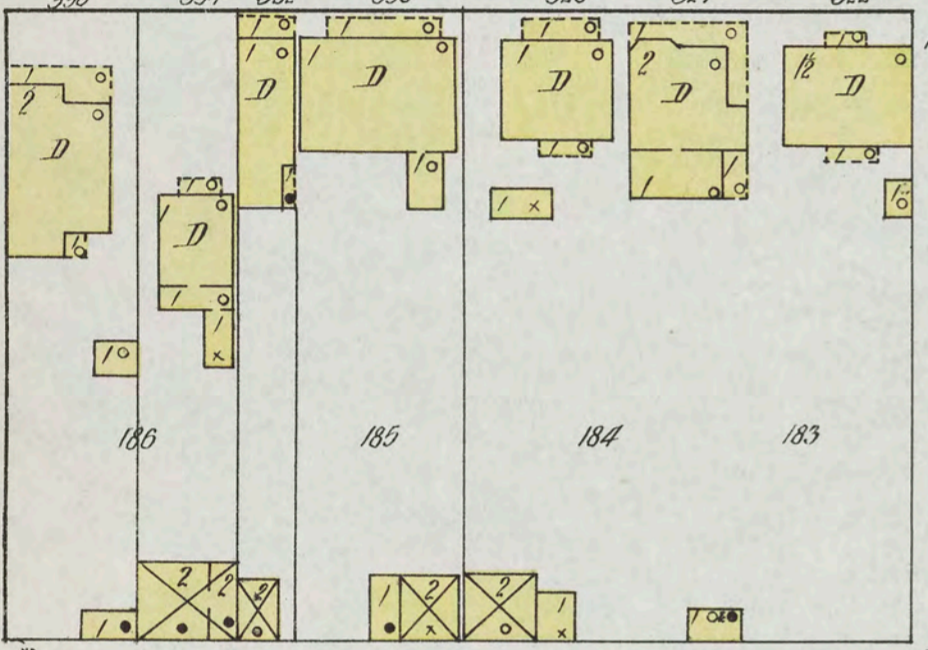
HIGH SCHOOL

HEAT: STEAM, (DIRECT)
FUEL: COAL, LIGHTS:
ELECTRIC & GAS, FIRE
EXTINGUISHERS.

HEAT: FURNACE &
FAN; LIGHTS: ELEC.
GAS.

N. GARDNER

N. BROADWAY



W. MAIN

BARNESVILLE
CITY MILLS
J.H. WILLIAMS, PROP.
POWER: STEAM, FUEL:
COAL & COKE, LIGHTS:
ELEC. WATER: BALS. &
BOILER ROOMS, FIRE EXTING.
EQUIPMENT.

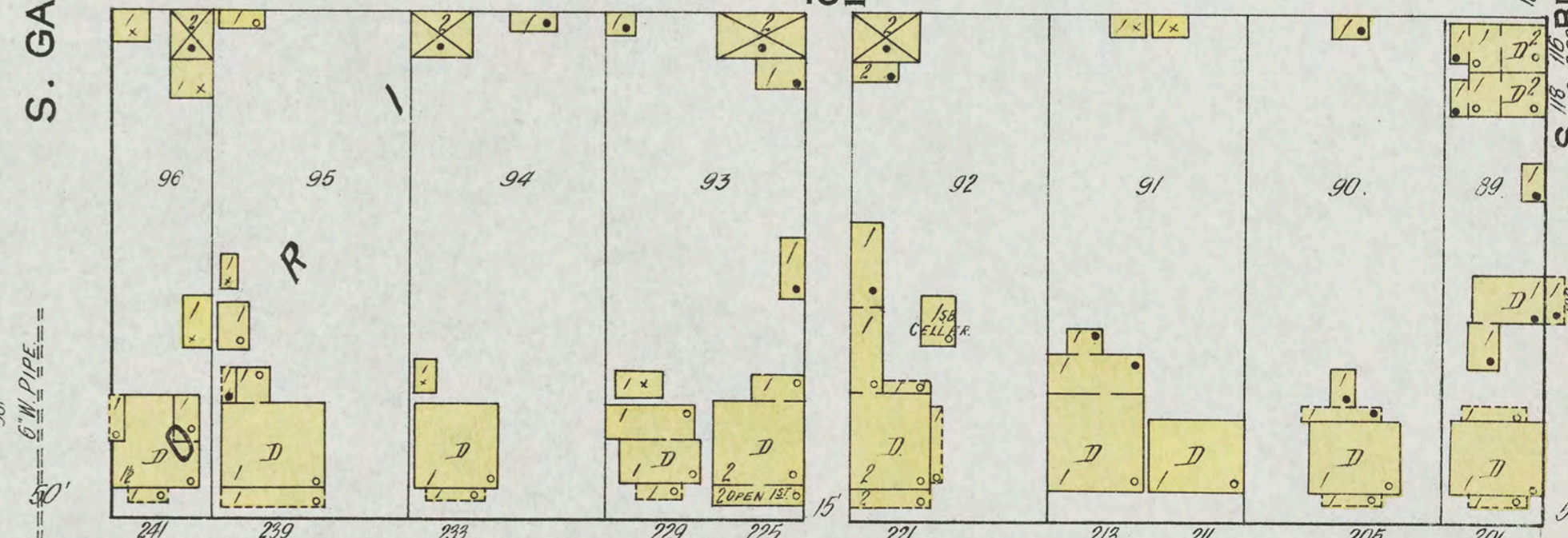
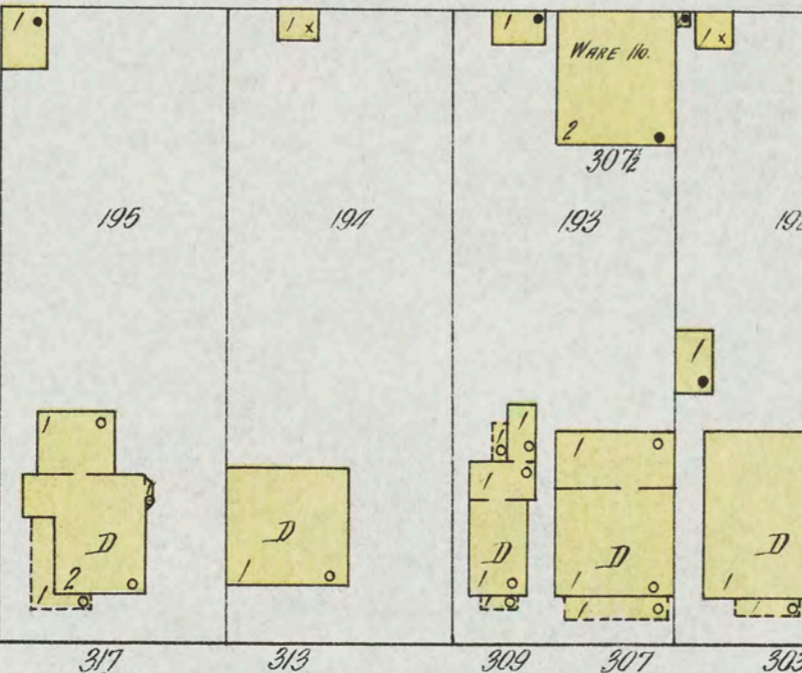
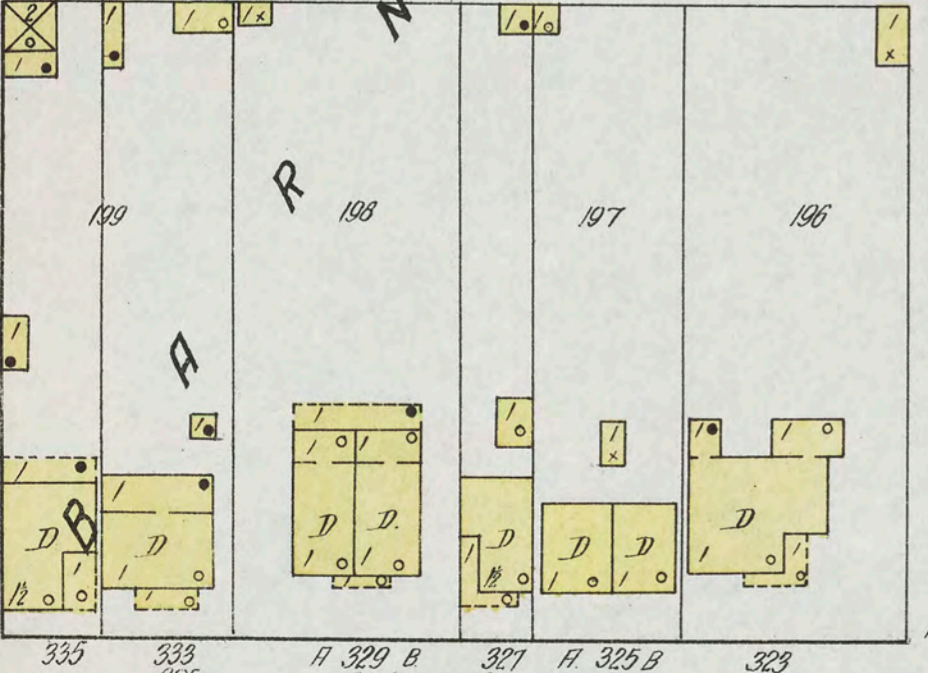
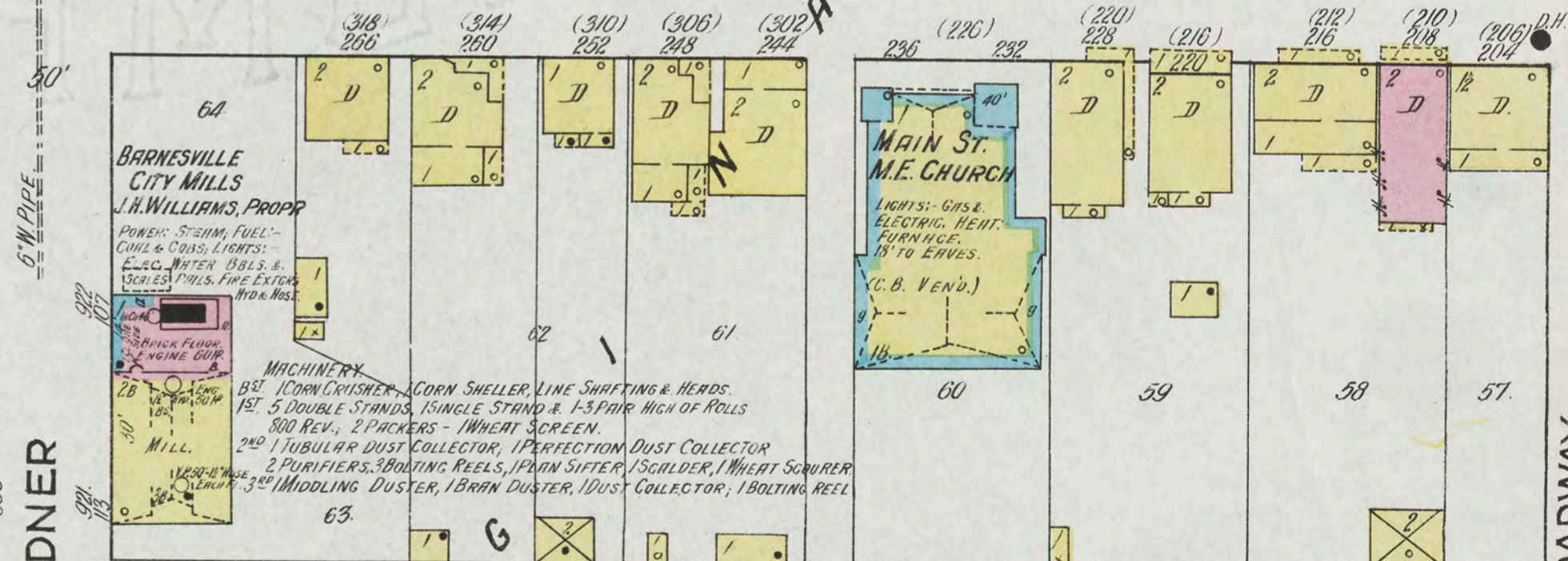
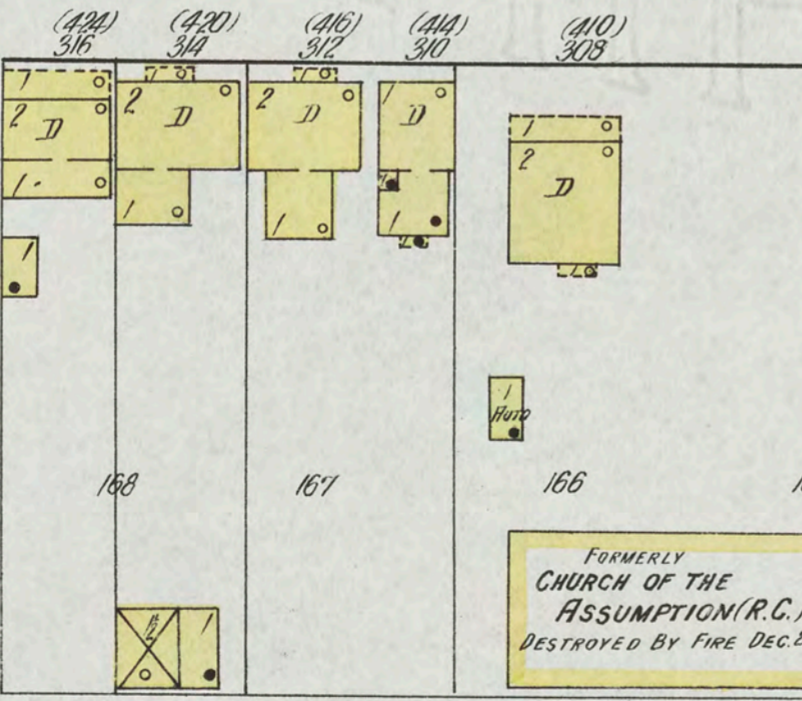
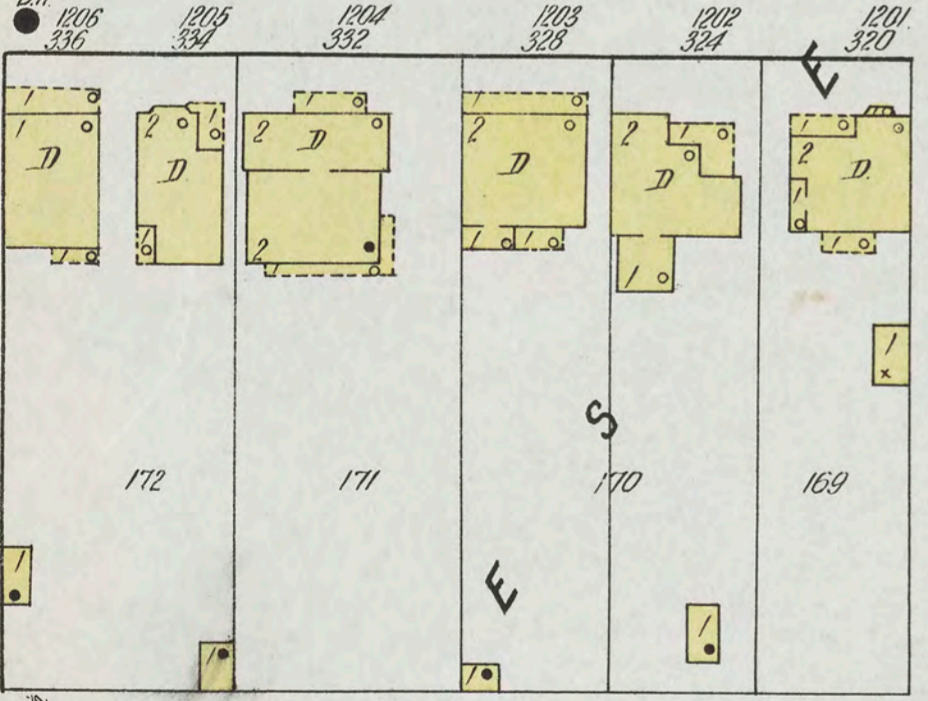
MAIN ST.
M.E. CHURCH
HEAT: GAS
ELECTRIC, HEAT:
FURNACE,
15 TO ENDS.
(C.B. VENT.)

FORMERLY
CHURCH OF THE
ASSUMPTION (R.C.)
DESTROYED BY FIRE DEC. 25, 1914.

MACHINERY
1st 1 COAL CRUSHER, 1 CORN SHELLER, LINE SHAFING & HEADS
1st 5 DOUBLE STANDS, 1 SINGLE STAND & 1-3 PAIR HIGH OF ROLLS
800 REV., 2 PACKERS - 1 WHEAT SCREEN
2nd 1 TUBULAR DUST COLLECTOR, 1 PERFECTOR DUST COLLECTOR
2 PURIFIERS, 3 BOLTING REELS, 1 PLAIN SIFTER, 1 SCALDER, 1 WHEAT SCRAPER
1 1/2 3/4" 3" MILLING DUSTER, 1 BRAN DUSTER, 1 DUST COLLECTOR, 1 BOLTING REEL

S. GARDNER

S. BROADWAY



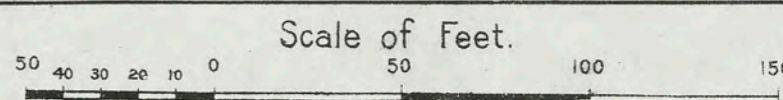
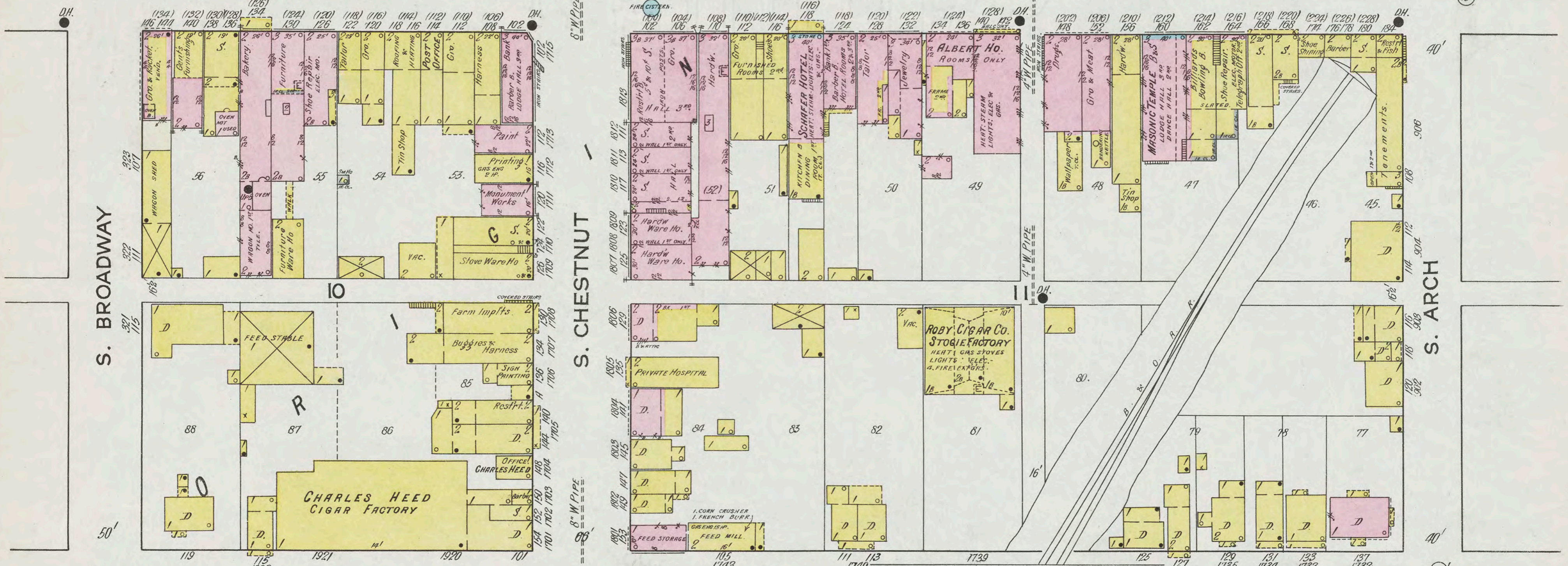
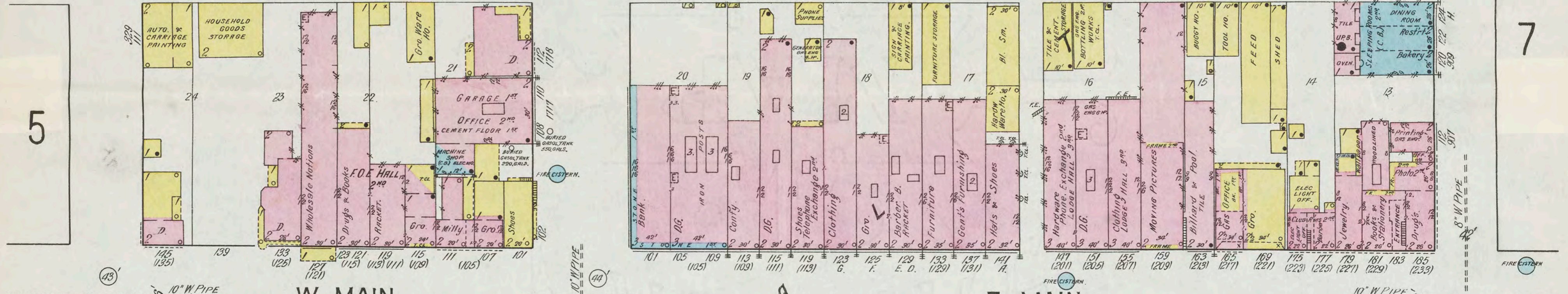
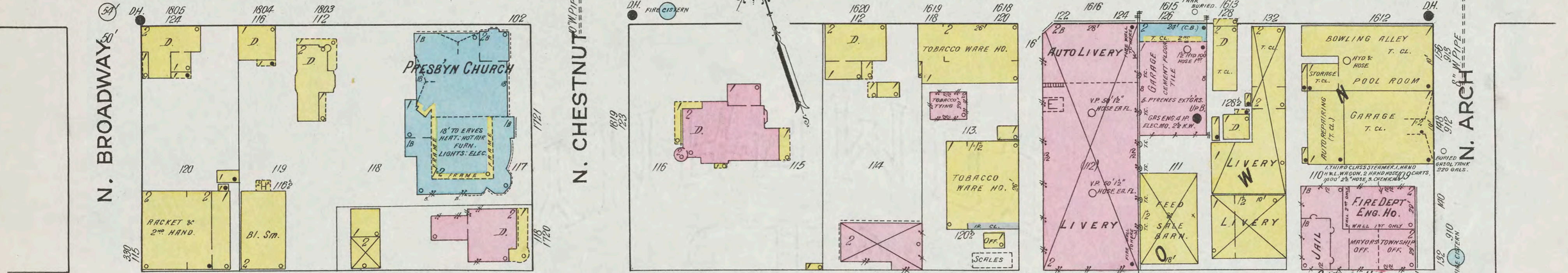
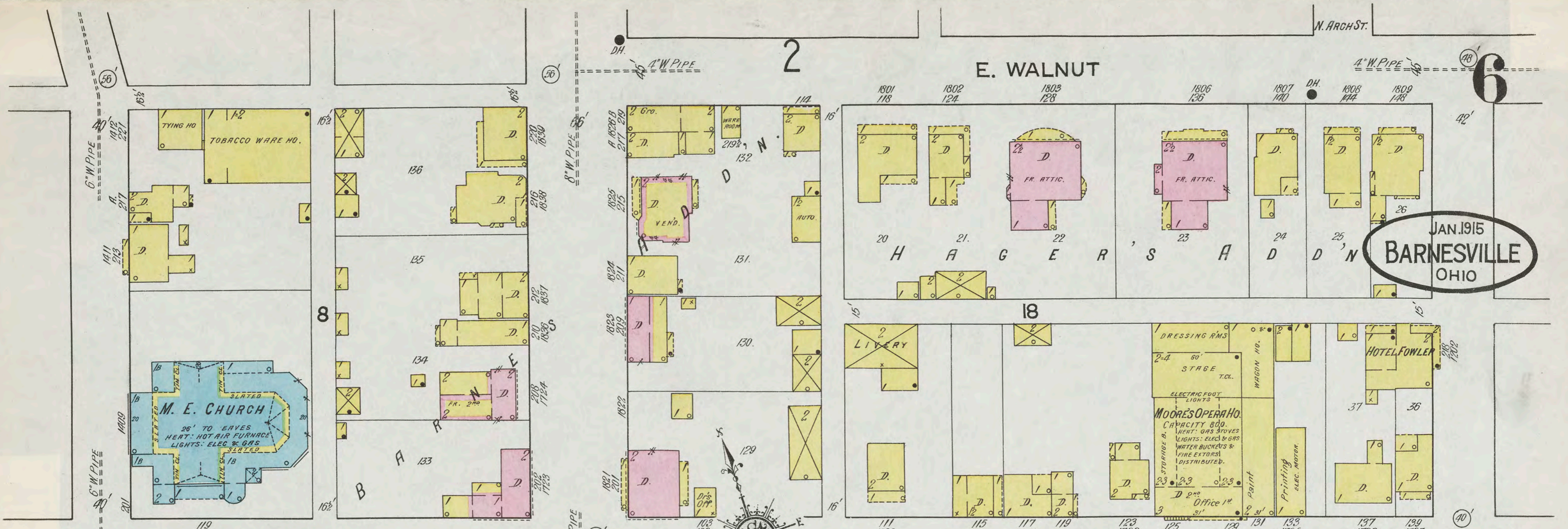
W. SOUTH

Scale of Feet.
50 40 30 20 10 0 50 100 150

8

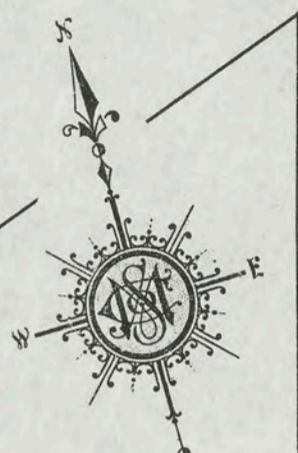
9

JAN. 1915
BARNESVILLE
OHIO



JAN. 1915
BARNESVILLE
OHIO

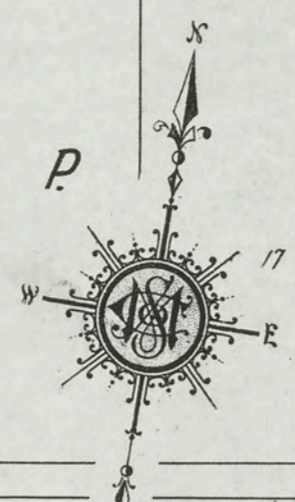
NIGHT, SUNDAY AND HOLIDAY WATCHMAN
NIGHT PORTABLE CLOCK, 9 STATIONS.
REPORTS HOURLY. ELECTRIC LIGHTS
GAS STOVES IN OFFICE, MACHINE SHOP &
WARE HO. NO. 3. HOT AIR IN PACKING DEPT.
ELECTRIC POWER, WATER BARRELS &
PAILS DISTRIBUTED. AIDS & ROSE FS
NOTED. NATURAL GAS USED IN LEARS
AND MELTING FURNACE.
NOTE - GAS PRODUCERS & OIL TANKS
NOT USED.



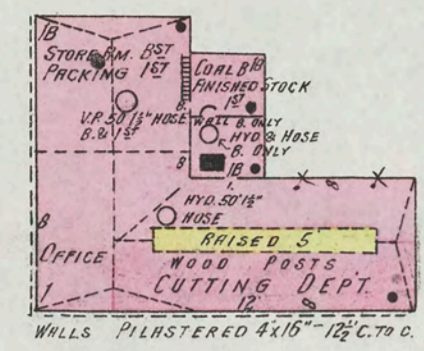
Scale of Feet.
0 20 40 60 80 100 120 140 160 180 200

HARRISON BROS.
WORKING SHIRT FACT.
No WATCHMAN, POWER, ELEC.
HEAT - FURNACE & STOVES.
LIGHTS - ELECTRIC.
FRONTING ON E. MAIN ST.

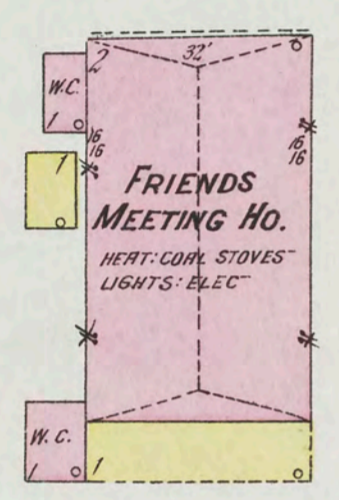




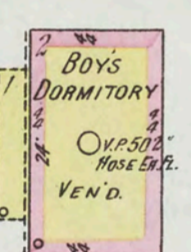
The Lotus Cut Glass Co.
NO WATCHMAN - LIGHT & POWER: ELEC.
HEAT: STEAM - FUEL: COAL - HYDS. &
HOSE AS NOTED - WATED BARRELS &
PAILS - CITY WATER.
NO EXPOSURE ANY SIDE



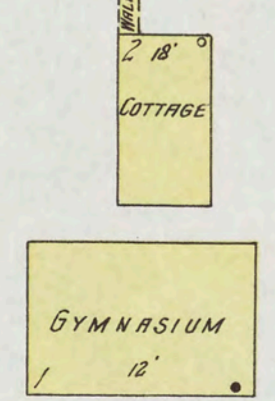
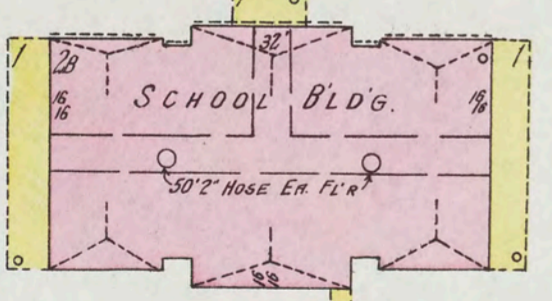
B. & O. R. R.



PRIMARY SCHOOL
NO LIGHTS
HEAT: COAL STOVES

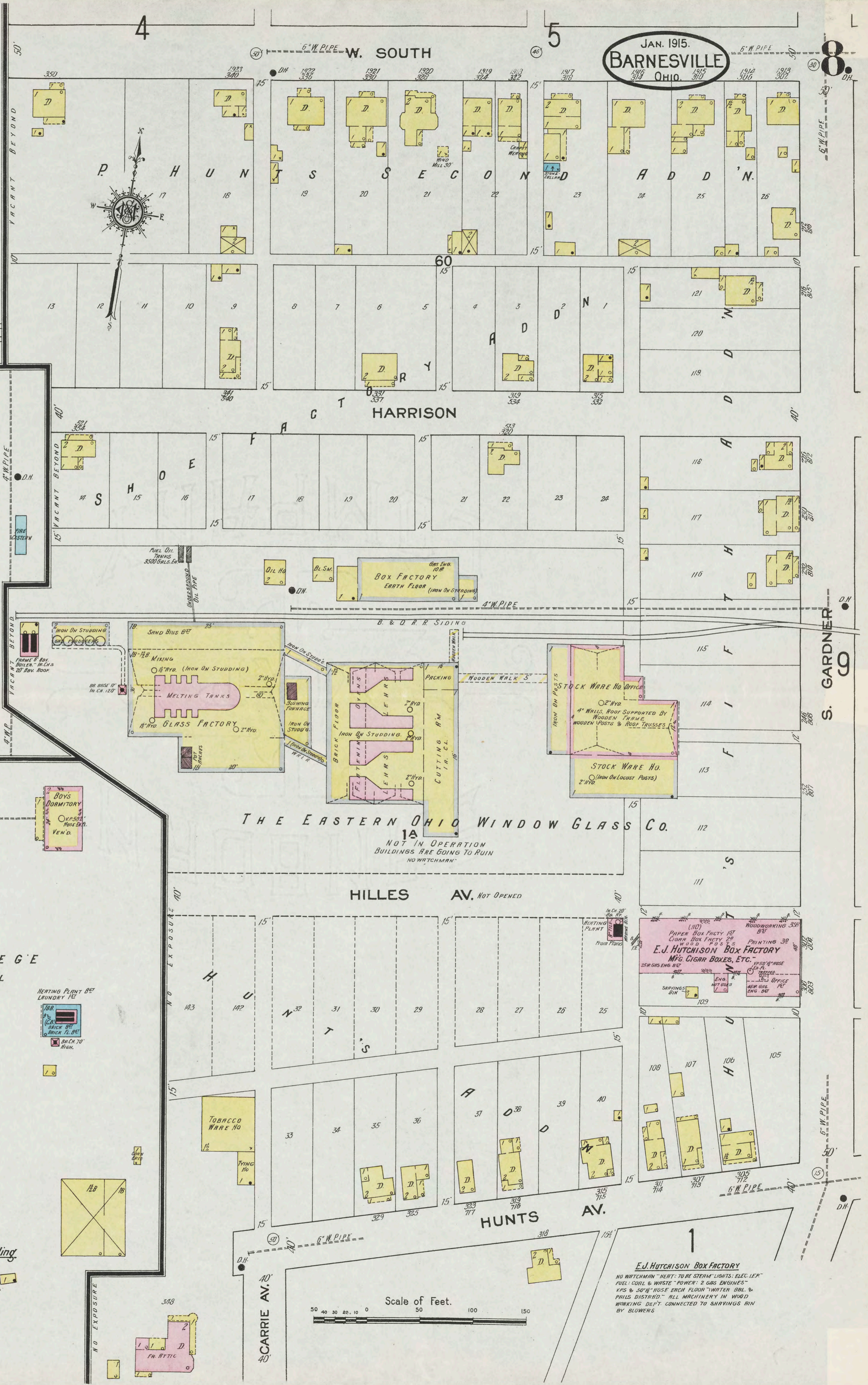
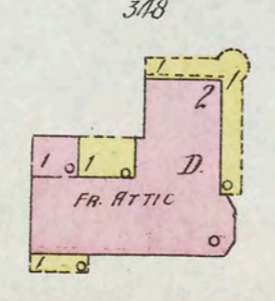
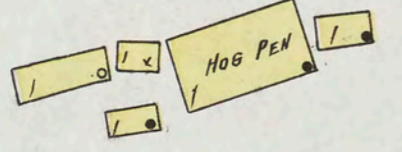


OLNEY COLLEGE
FRIENDS BOARDING SCHOOL



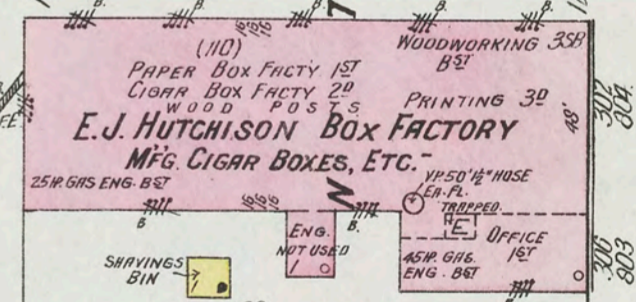
HEAT: STEAM - FUEL: COAL - LIGHTS: ELECTRIC -
CITY WATER - HYD. & HOSE AS NOTED -
2 DHS ON CAMPUS - CISTERN NEAR MEETING HO.

Located 1/2 Miles E. of City Building
NO EXPOSURE ANY SIDE



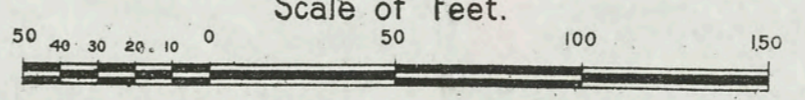
THE EASTERN OHIO WINDOW GLASS CO.
1A
NOT IN OPERATION
BUILDINGS ARE GOING TO RUIN
NO WATCHMAN

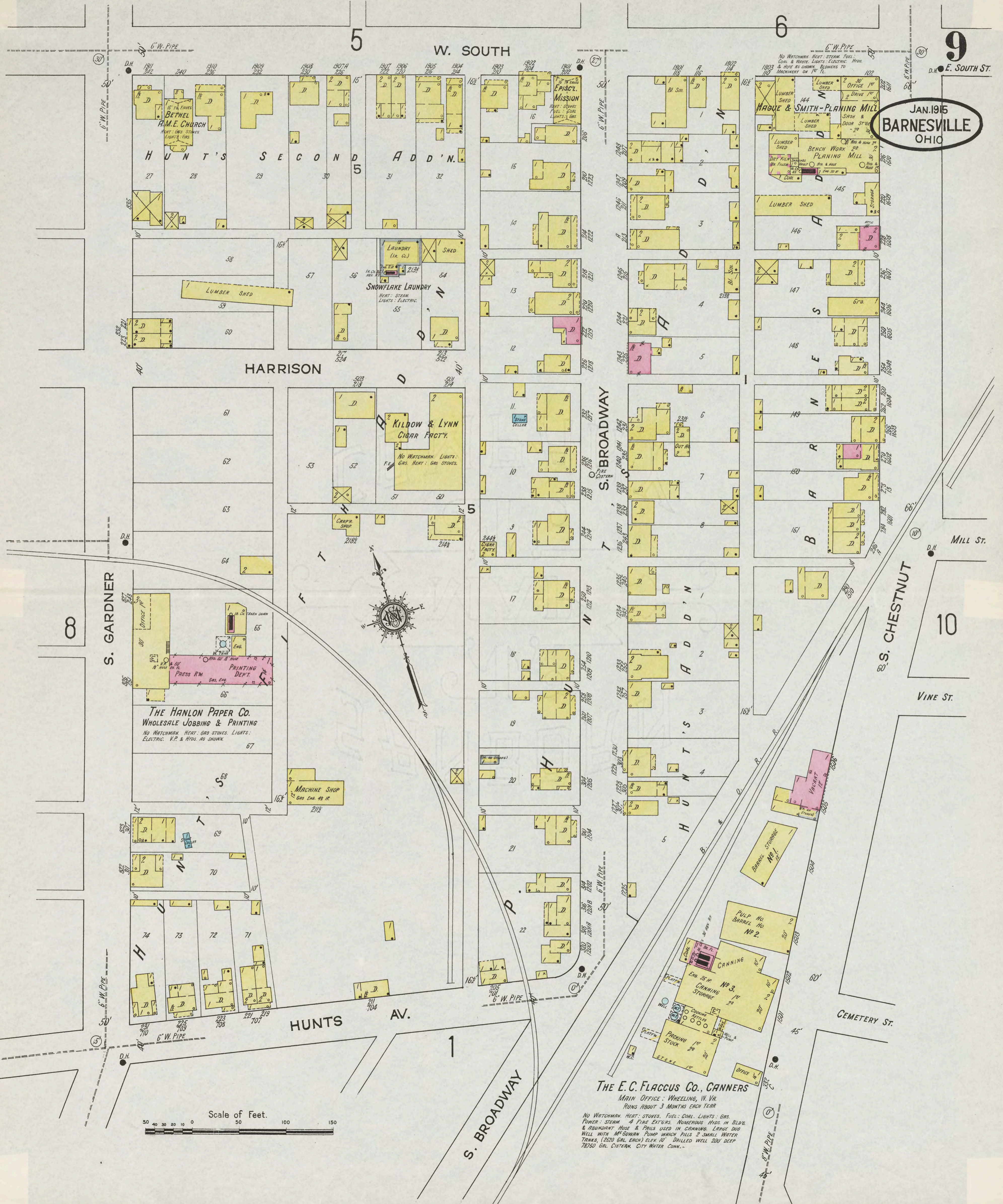
HILLES AV. NOT OPENED



E.J. HUTCHISON BOX FACTORY
NO WATCHMAN - HEAT: TO BE STEAM - LIGHTS: ELEC. LEA.
FUEL: COAL & WASTE - POWER: 2 GAS ENGINES -
HYD. & HOSE EACH FLOOR - WATER: OIL &
PAILS - DISTRIED - ALL MACHINERY IN WOOD
WORKING DEPT. CONNECTED TO SHAVINGS BIN
BY BLOWERS

Scale of Feet.





9

JAN. 1915
BARNESVILLE
OHIO

W. SOUTH

HARRISON

S. GARDNER

S. BROADWAY

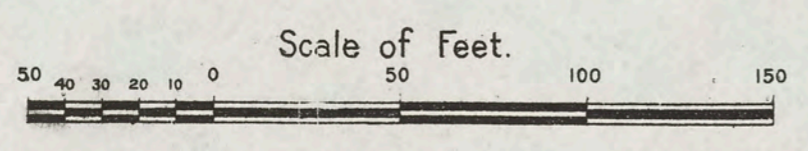
S. CHESTNUT

HUNTS AV.

S. BROADWAY

THE E.C. FLACCUS CO., CANNERS
MAIN OFFICE: WHEELING, W. VA.
RUNS ABOUT 3 MONTHS EACH YEAR

NO WATCHMAN. HEAT: STOVES. FUEL: COAL. LIGHTS: GAS.
POWER: STEAM. 4 FIRE EXTS. NUMEROUS HYDS. IN BLDG.
& FOUNDRY HOSE & PIPES USED IN CANNING. LARGE DUG
WELL WITH M'GOWAN PUMP WHICH FILLS 2 SMALL WATER
TANKS, (2500 GAL. EACH) ELEV. 10' DRILLED WELL 200' DEEP
78750 GAL. CISTERN. CITY WATER CONN.



BETHEL A.M.E. CHURCH
HEAT: GAS STOVES
LIGHTS: GAS

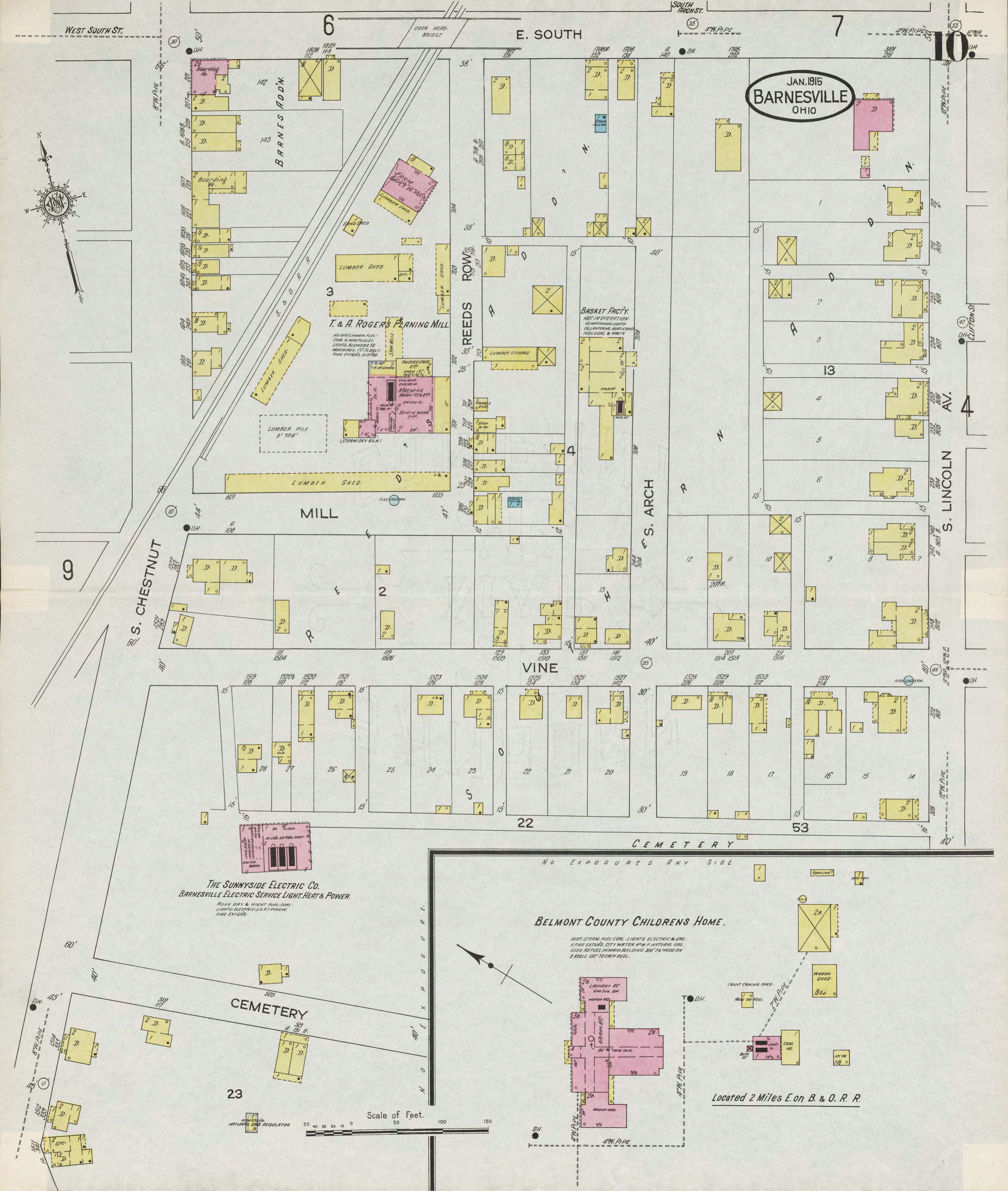
SNOWFLAKE LAUNDRY
HEAT: STEAM
LIGHTS: ELECTRIC

KILDOW & LYNN CIGAR FACTY.
NO WATCHMAN. HEAT: GAS STOVES. LIGHTS: GAS.

THE HANLON PAPER CO.
WHOLESALE JOBBING & PRINTING
NO WATCHMAN. HEAT: GAS STOVES. LIGHTS: ELECTRIC. V.P. & HYDS. AS SHOWN.

THE E.C. FLACCUS CO., CANNERS
CANNING STORAGES
PULP HO. BARREL HO. NO. 2
CANNING STORAGES
ENG. 25 HP. NO. 3
CANNING STORAGES
PACKING STUCK
OFFICE

JAN. 1915
BARNESVILLE
OHIO



The Sunnyside Electric Co.
BARNESVILLE ELECTRIC SERVICE LIGHT, HEAT & POWER.
RUNS DAY & NIGHT FUEL COAL.
LIGHTS: ELECTRIC (E.P.) FIRE
FIRE EXT'RS.

BELMONT COUNTY CHILDRENS HOME.

HEAT: STEAM FUEL COAL. LIGHTS: ELECTRIC & GAS.
FIRE EXT'RS: CITY WATER 4" W.P. NATURAL GAS.
USED AS FUEL IN MAIN BUILDING. 300' PA. HOSE ON
2 REELS. 150' TO CRYN REEL.

Located 2 Miles E. on B. & O. R. R.

Scale of Feet.
0 10 20 30 40 50 100 150