

Hill 250' higher than River, at summit

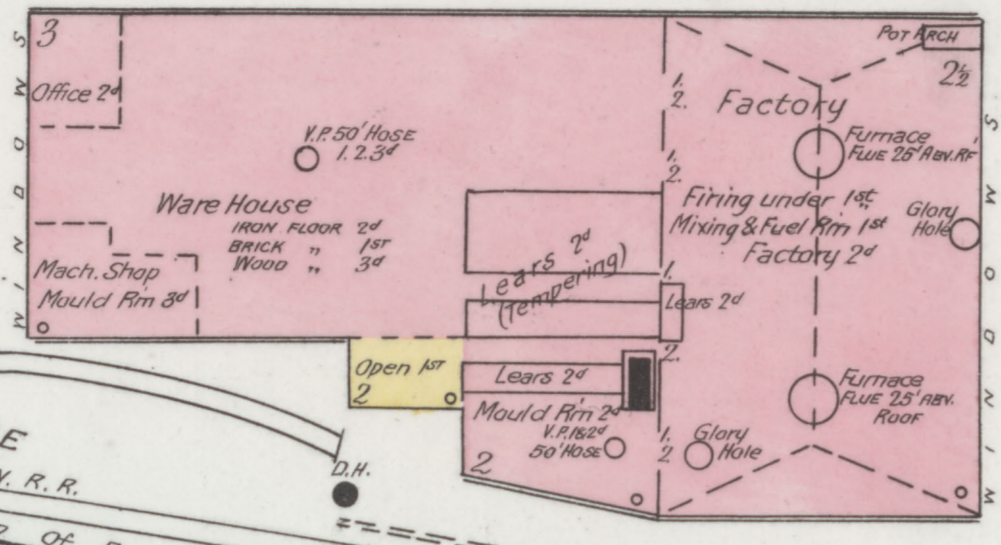
Precipitous Hillside

No exposures

C&P R.R.

CRYSTAL GLASS CO.
About 1/2 mile S. of C&P R.R. Station
Bridgeport

NIGHT WATCHMAN, AM. WATCHMAN'S TIME
DETECTOR 7 STATIONS. CITY WATER, VERT.
PIPES & HOSE AS SHOWN. FACTORY RUNS
ALL DAY & ALL NIGHT.

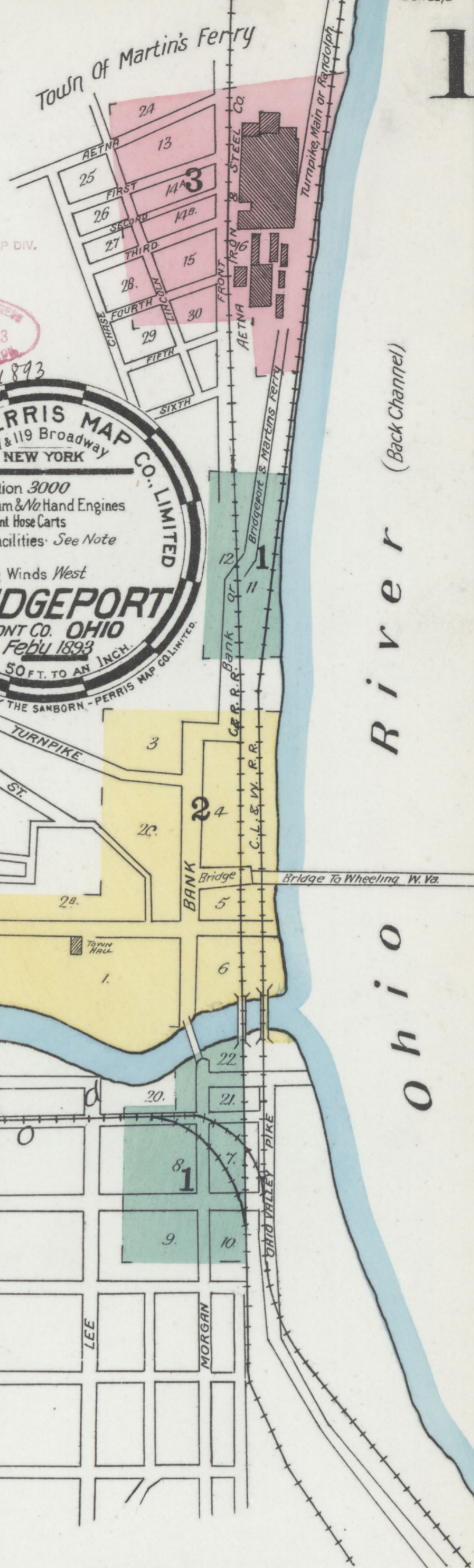
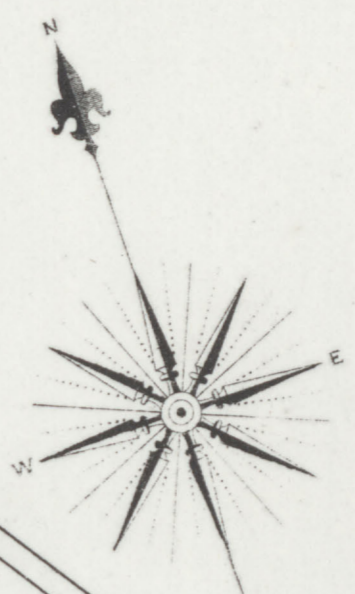


NOTE: WATER SUPPLY BY CONTRACT
FROM MARTIN'S FERRY CHARITY SYSTEM
WITH RESERVOIR ON HILL BEHIND TOWN
AVE. PRESSURE IN MAINS TO BE
NO FIRE DEPARTMENT. BUT TOWN HAS CONTRACT
WITH WHEELING W.VA. (ON OPPOSITE BANK OF
RIVER) FIRE DEPT. TO ANSWER CALLS (BY
TELEPHONE) TO BRIDGE CO. NO. 1. 1/4 MILES
E. OF C&P R.R. STATION

2nd COPY FILE TO MAP DIV.
APR 6 1907

LIBRARY OF THE
CITY OF BRIDGEPORT
APR 15 1885
Mar 30 - 1893

SANBORN - PERRIS MAP CO. LIMITED
117 & 119 Broadway
NEW YORK
Population 3000
No Steam & No Hand Engines
No Independent Horse Carts
Water Facilities - See Note
Prevailing Winds West
BRIDGEPORT
BELMONT CO. OHIO
Feb 1893
SCALE 50 FT. TO AN INCH

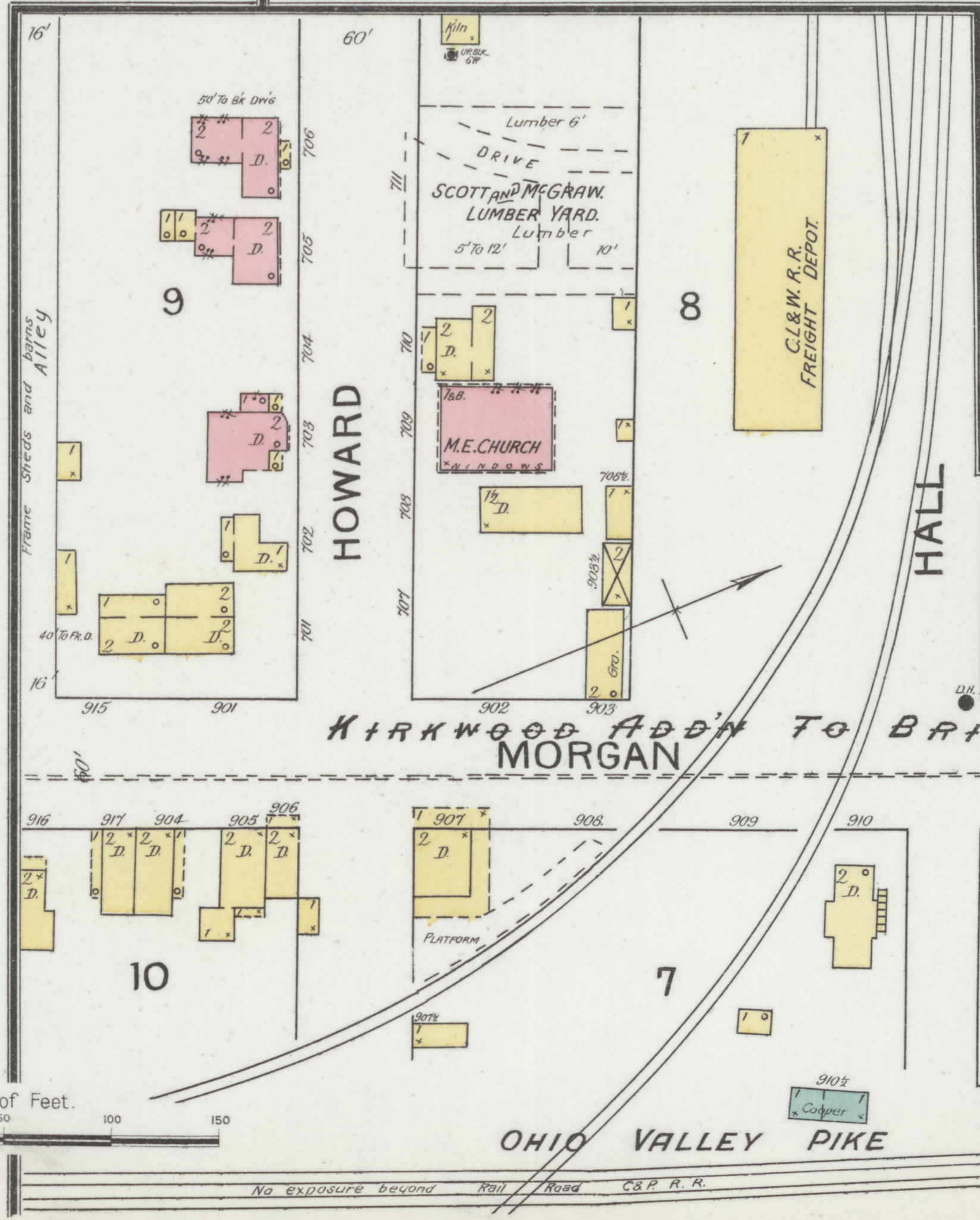


KEY

1	FIRE WALL 6 IN. AB. ROOF
2	CONCRETE ROOF
3	FRAME PARTITION
4	OPENING & IRON DOOR
5	WINDOWS - SHUTTERS
6	STABLE
7	WINDOW IN 1 ST STORY
8	2 1/2" & 3 1/2" "
9	2 1/2" & 4 1/2" "
10	B'LDG'S COLORED YELLOW ARE FRAMER
11	RED - BRICK
12	BLUE - STONE
13	GREY - IRON
14	BROWN - ADobe
15	GREEN - SPECIALS
16	MARKED (S) ARE CLOTH LINED
17	(S) INDICATE RELATIVE HEIGHTS
18	ALTERNATE STREET NOS ARE ACTUAL
19	CONSECUTIVE - ARBITRARY
20	BROKEN LINE NEAR B'LDG - WOOD CORNICE
21	SOLID - METAL

INDEX.

SPECIALS.	NUMBER	DESCRIPTION	NUMBER	DESCRIPTION
A	1	Etna Iron & Steel Co.'s Works	K	Koehnline Bros., Ice House
B	2	" Public School	L	Kuhn, N., Ice Houses
C	3	Bayha Bros., Carriage M'f'rs.	M	M. E. Church
D	4	Baptist Church	O	Ogleby Block
E	5	Bridgeport Glass Co.	P	Rhodes, E. P., Flour Mill
F	6	Steam Mills	Q	" Block
G	7	Crystal Glass Co.	R	Scott & McGraw, Lumber Yard
H	8	Diamond Flouring Mills	S	Sherman House
I	9	Hill, Thos., Machine Shop	T	Smith & Sons, Flour Mills
J	10	" House	U	Town Hall
K	11		V	Wheeling City R. R. Power House
L	12		W	



Scale of Feet. 0 50 100 150

OHIO VALLEY PIKE

No exposure beyond Rail Road C&P R.R.

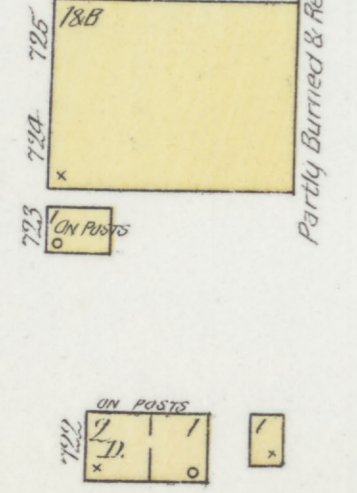
No exposure

No exposure

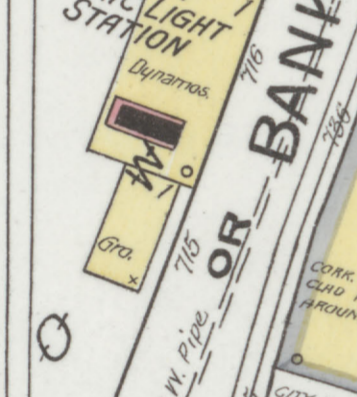
Steep Hillside

BRIDGEPORT & MARTINS

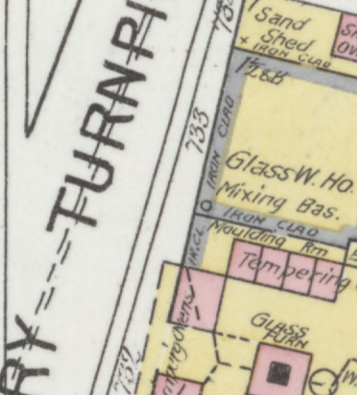
KOEHLINER'S ICE HOUSE.
Partly Burned & Abandoned



BRIDGEPORT ELECTRIC LIGHT STATION



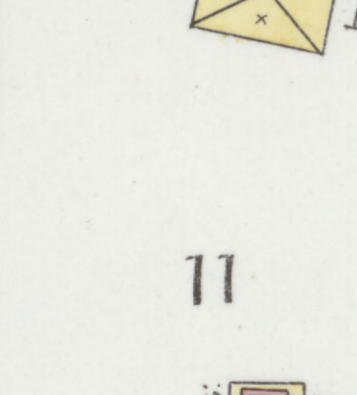
GLASS W. HO.



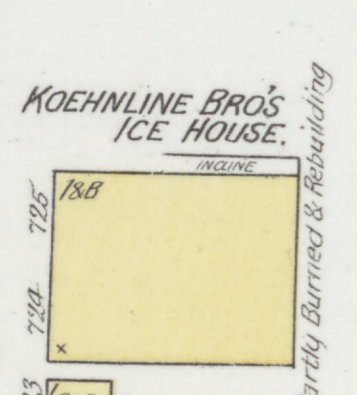
GLASS W. HO.



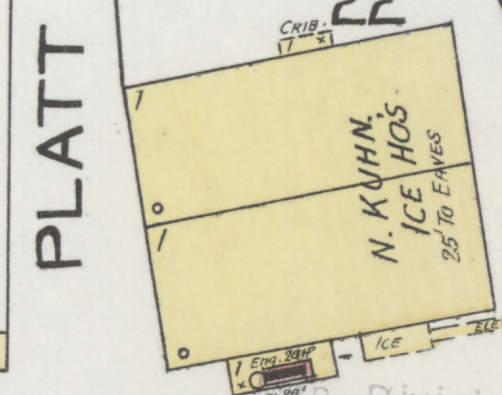
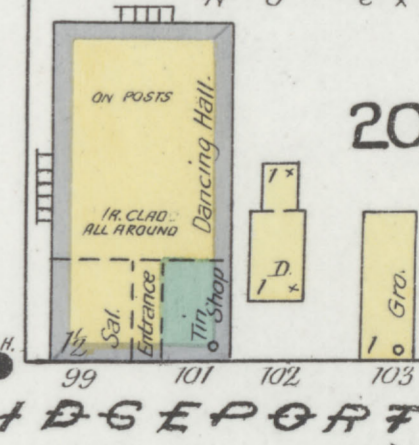
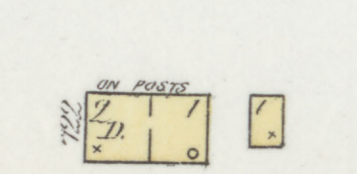
GLASS W. HO.



GLASS W. HO.



GLASS W. HO.



City of Congress

Wheeling Creek.

Creek.

Wheeling

VACANT.



SMITH & SONS
BRIDGEPORT STEAM MILLS
Cap. 125 Bbls. per day.

NO WATCHMAN. NO HOSE. 1STOVE IN OFF. LIGHTS: COAL OIL. BUCKETS OF WATER THROUGH MILL.

Machinery:
BEST: DRIVING MACH'Y
12 ELEVATORS TO W. FROM EA FLOOR 216 1/2
17: 7 DEL. SET ROLLS
2 GARDEN CITY BRK. MACH'S
2 FLOUR PACKERS
2 CENTRIFUGAL REELS
1- OREL BOLTING CHEST
2 LUMBER BRUSH MACH'S
2 SMITH W. L. EXHIBIOR PURIFIERS.
6 SCALPERS.
HTIC: 2 BRANNUSTERS.
1 GURCHER SHUTTER.
1 CORN SEPARATOR
1 PRINZ DUST COLLECTOR
2 MURGE ELEY. BOLTS.

E. P. RHODES
DIAMOND FLOURING MILLS.
Built 1872. Cap. 150 Bbls. per day.

NO WATCHMAN. LIGHTS: CLOSED COAL OIL LANTERNS.
1STOVE IN 2ND OF MILL W. IN OFF. V.P. WITH 50" 17 1/2" HOSE ON HT & SHP
4 25" 1 1/2" HOSE ON 3E, 5TH W. ROOF. 2000 W. HOLES 1 1/2" 2 1/2" CITY WATER.

Machinery: 1ST GERRING 3 FLOUR PACKERS. 36 ELE'S TO TOP.
2 NO 5 DEL. SET ROLLS 1/2 ONE 4 REEL ROLLER BRAKE
3 NO 6 W. ONE 4 REEL BOLTING CHESTS. 1 BRANNUSTER. 1 CORN SOLPER
2 CENTRIFUGAL REELS. 1 SMITH PURIFIER. 2 BUNNE. SPINZ DUST COLLECTORS.
4 TH. THREE 2 REEL BOLTING CHESTS. 2 VICTOR BRUSH MACH'S
1 W. HO. SEPARATOR. 1 CORN SHELLER.
2 SMITH PURIFIERS WITH DUST COLLECT.
2 CENTRIF. REELS. 1 CORN REEL.
2 TWO REEL SCALPING CHESTS.
1 RYE REEL - HAR. CHETIC SEPARATOR W. DUST COLLECTOR.

J. W. HILL
LIVERY.

17 1/2 B.

Printing

Sal.

Barber

Billiards

Plumber

Tailor

C. & P. R. R. FREIGHT DEPOT.

136

137

138

139

140

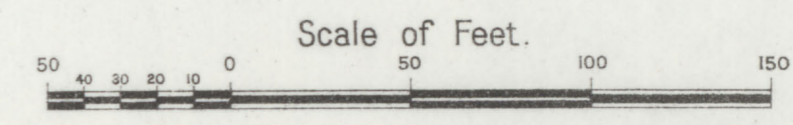
Dressed Lumber Shed.

Lumber 10'

Lumber 5'

Wood turning 1st Mach. Shop 2nd

THOS. HILL MACH. SHOP.

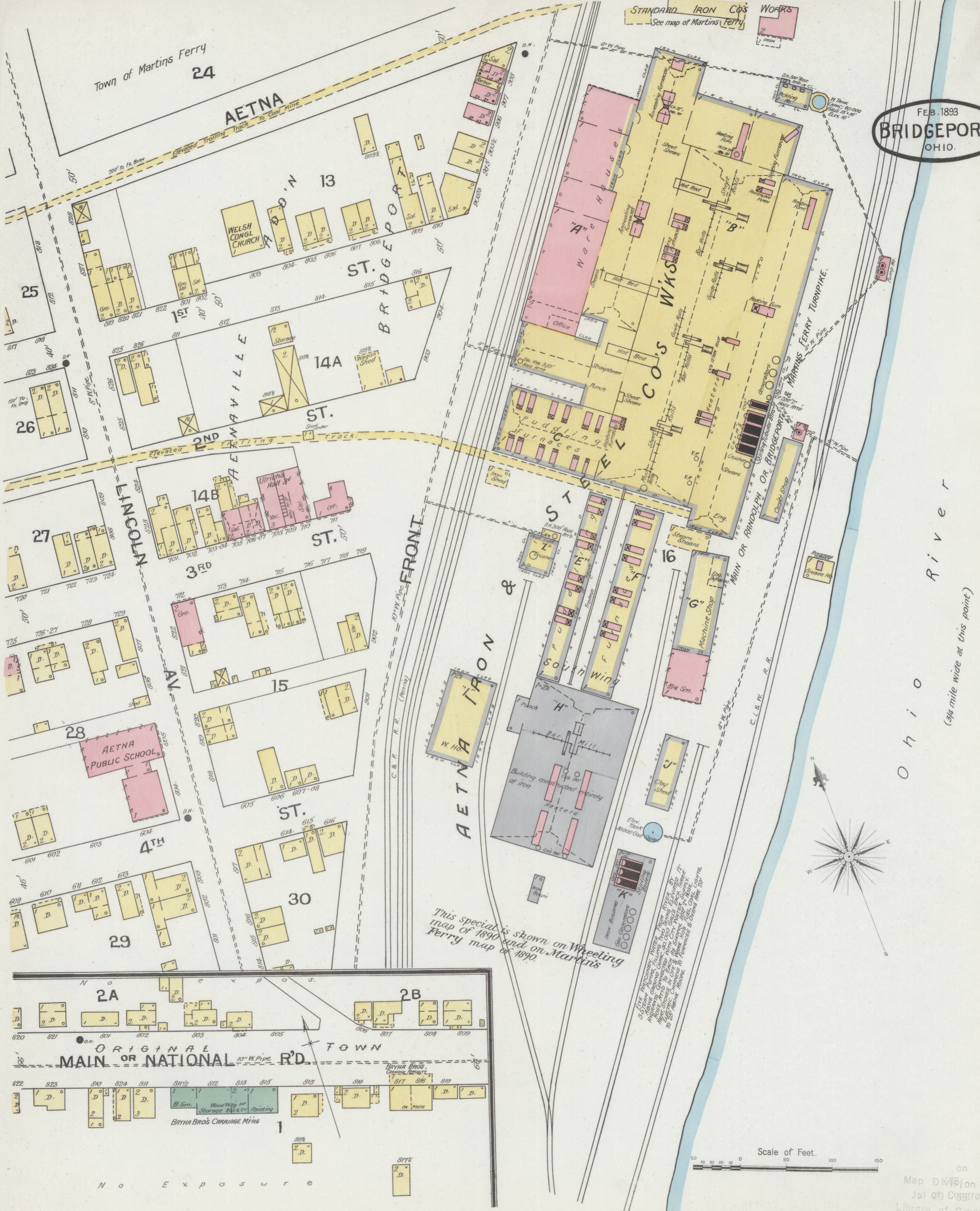


FEB. 1893
BRIDGEPORT
OHIO.

Town of Martins Ferry 24

AETNA

STANDARD IRON CO'S WORKS
See map of Martins Ferry



This special is shown on Wheeling Ferry map of 1890 and on Martins Ferry map of 1890.

This 3-Story Warehouse, with 100,000 lbs. capacity, was built by the Aetna Iron Works, and is the largest building of its kind in the West. It is situated on the Ohio River, and is used for the storage of iron and other materials. It was built by the Aetna Iron Works, and is the largest building of its kind in the West.

Scale of Feet.
50 100 150

on
Map Division
Jul 29 Congress
Library of Congress

N o E x p o s u r e