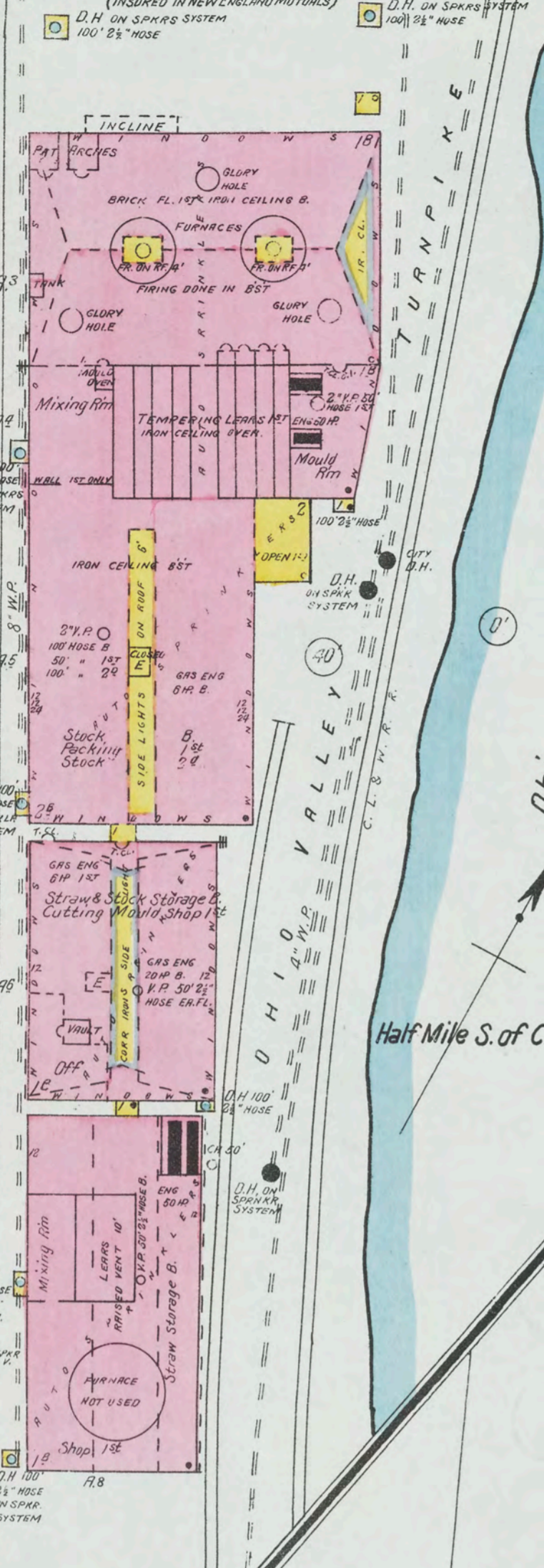
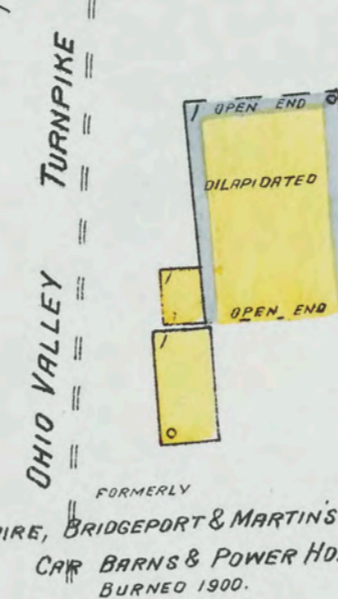


CRYSTAL GLASS CO.
OF NATIONAL GLASS CO
MFRS OF GENERAL WARE & TUMBLERS

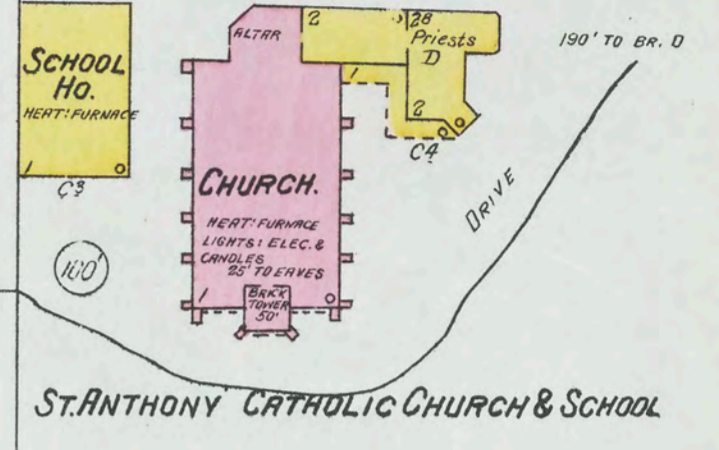
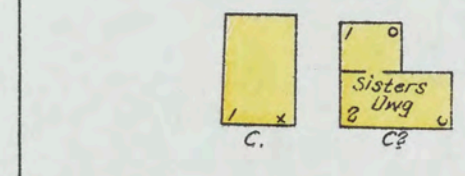


Run Night & Day 500 EMPLOYEES
WATCHMAN AMERICAN CLOCK
10 STATIONS
100 MEN DAYS & 100 MEN AT NIGHT
AVAILABLE FOR FIRE
NO. 1 NEW UNDERWRITERS COTTON
WIRE NETS OUTSIDE (AS NOTED)
NO. 2 NEW UNDERWRITERS COTTON
WIRE NETS INSIDE
CITY WATER
54 DRY EXHAUSTOR FIRE EXTRAS
DISTRIBUTED THROUGH IN OFF.
9 WATER BARRELS & 6 PAILS
DISTRIB. BLDG.
LIGHTS: GAS (STATIONARY) & ELEC.
FUEL & POWER: GAS, HEAT, STEAM
COMPLETE SYSTEM OF HEAT EXCH.
AUTO. SPRINKLERS (WET IN SUMMER
DRY IN WINTER)
WATER SUPPLY: CITY WATER BY AM
& W. P. PRESSURE TANKS
WATER SUPPLY: PRIVATE TANK ON
HILL N.W. OF BUILDING'S ELEV.
100' CAPACITY 2000 GALS.
1800 HEADS ON SYSTEM
SPACED 5'

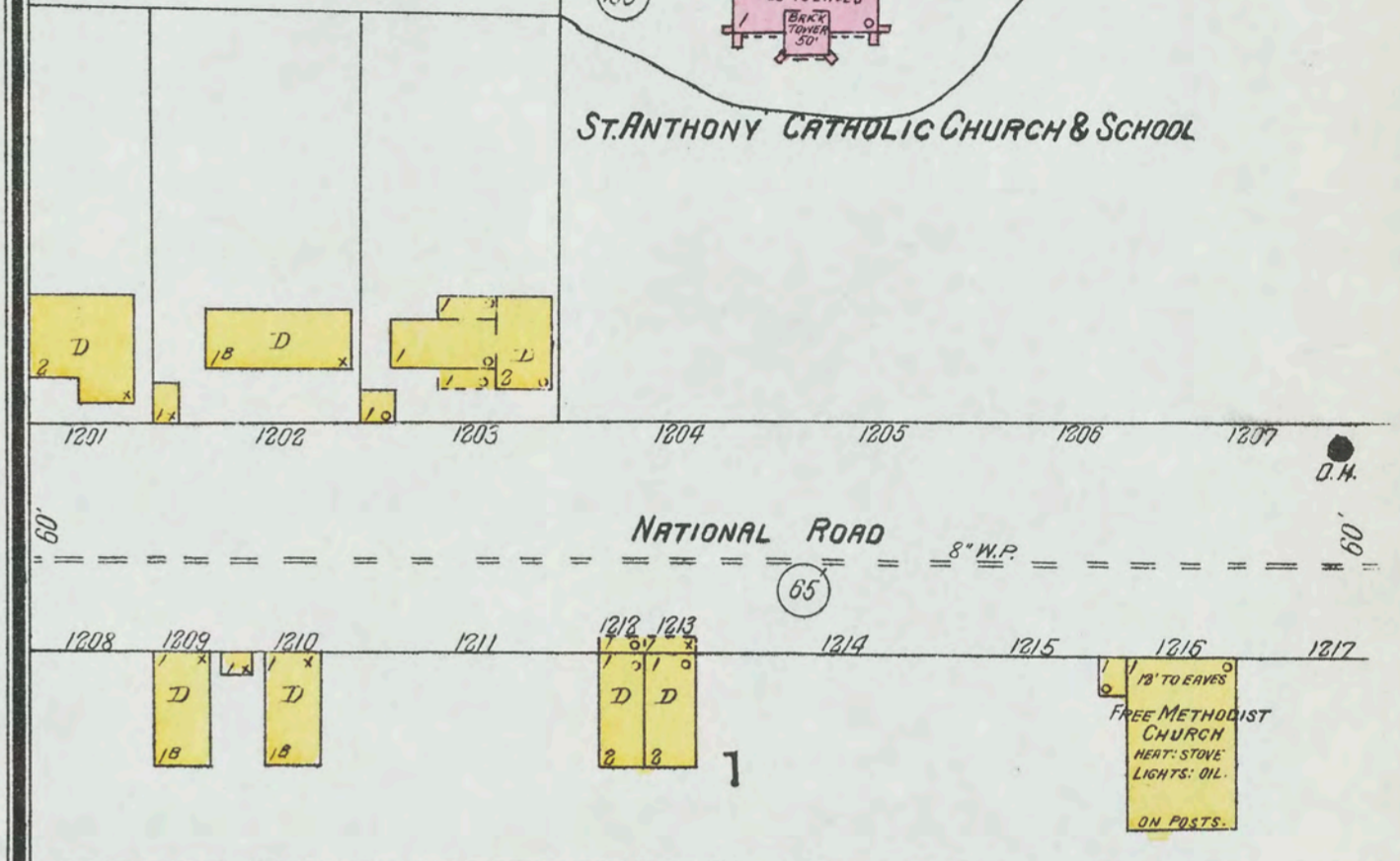
One Mile S. of C. & P. Depot



BELLAIRE, BRIDGEPORT & MARTIN'S FERRY STREET RY
CAR BARN & POWER HD.
BURNED 1900.



ST. ANTHONY CATHOLIC CHURCH & SCHOOL

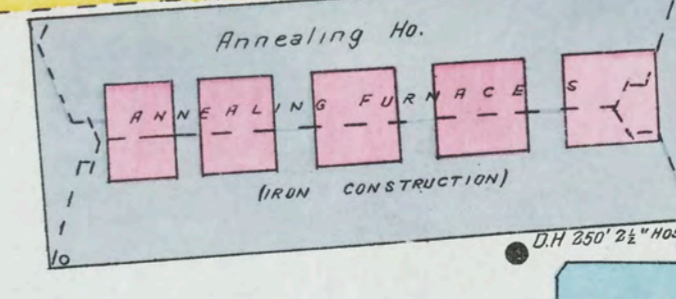
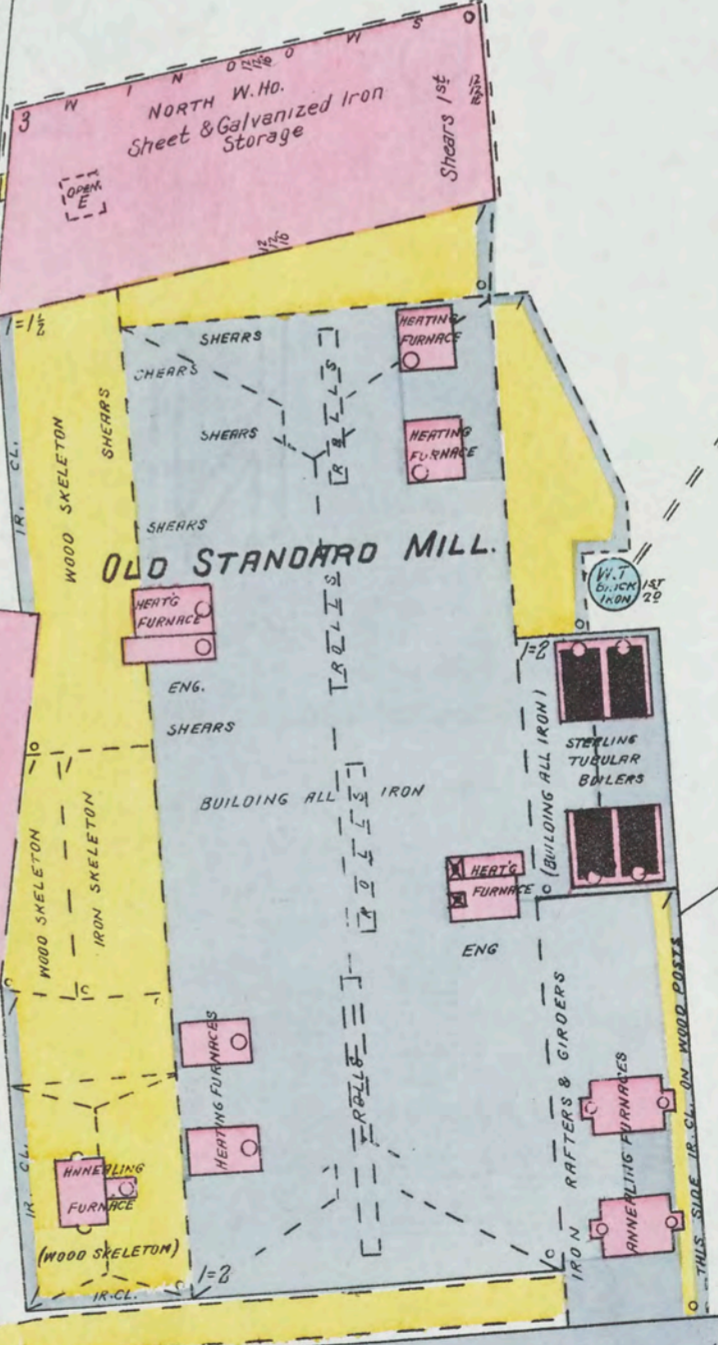


THIS SPECIAL ALSO SHOWN ON
MARTIN'S FERRY MAP 1900.

MARTIN'S FERRY

BESSEMER

AETNA - STANDARD
IRON & STEEL CO.



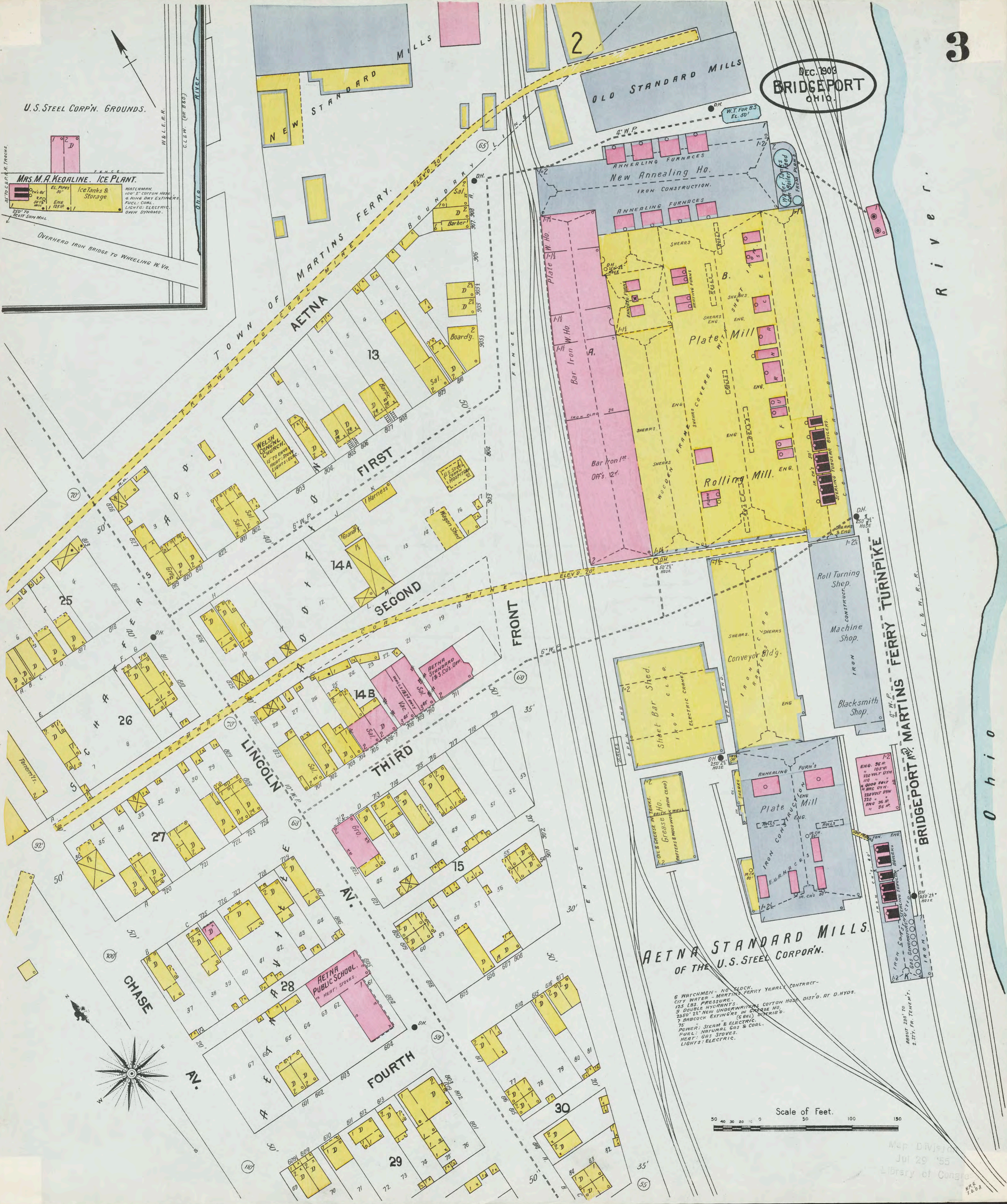
DEC. 1903
BRIDGEPORT
OHIO.

U.S. STEEL CORP'N. GROUNDS.

Mrs. M. A. Keoaline. ICE PLANT.

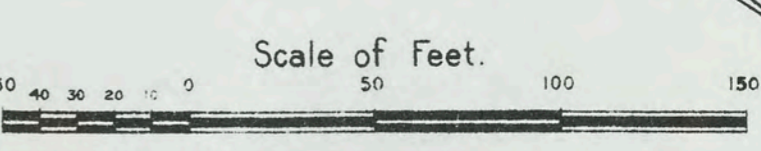
WATCHMAN: NEW 2" COPPER HOSE & RING DRY EXTINGUISHERS.
FUEL: COAL. LIGHTS: ELECTRIC. OWN DYNAMO.

OVERHEAD IRON BRIDGE TO WHEELING W.VA.



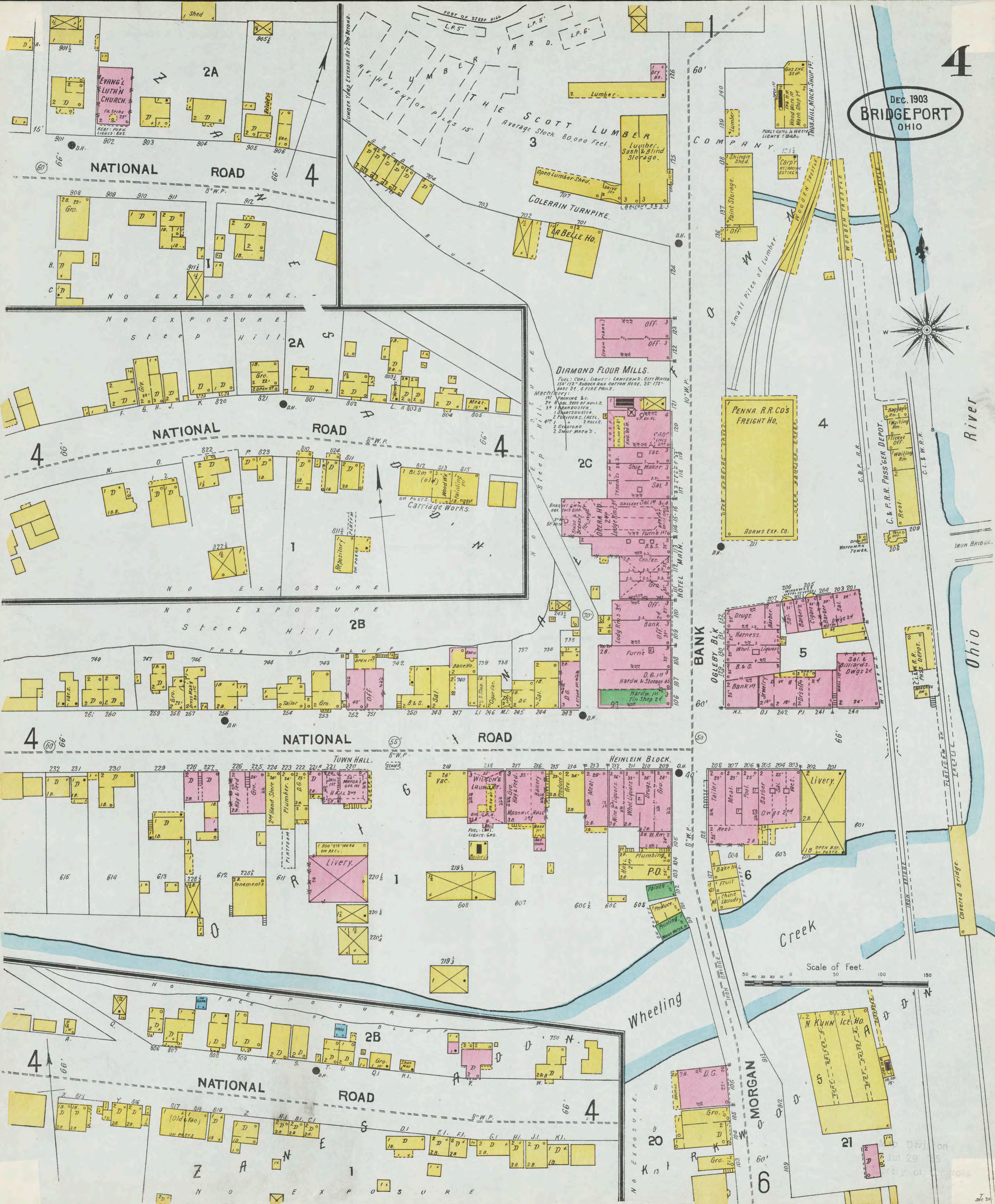
AETNA STANDARD MILLS.
OF THE U.S. STEEL CORP'N.

6 WATCHMEN - NO CLOCK.
CITY WATER - MARTINS FERRY YEARLY CONTRACT -
125 LBS. PRESSURE.
9 DOUBLE HYDRANTS
2550' 2" NEW UNDERWRITERS' COTTON HOSE DIST'D. AT D. HYDS.
7 BABCOCK EXTINGUISHERS (5 GAL) SUPERIOR D.
POWER: STEAM & ELECTRIC.
FUEL: NATURAL GAS & COAL.
HEAT: GAS STOVES.
LIGHTS: ELECTRIC.



Map Div. Jul 29 '55
Library of Cong.
H.C. 1803

DEC. 1903
BRIDGEPORT
OHIO



DIAMOND FLOUR MILLS.
FUEL: COAL. LIGHT: LAMPERS. CITY WATER
150' 172" RUBBER AND COTTON HOSE. 25' 172"
HOSE 22' 4 FINE PHILS.

PENNA. R.R. CO'S
FREIGHT HO.
ADAMS EXP. CO.

OGLEY BLK
199 190 191 192
Drugs
Barber
Cigars
Babbers
Whol. Liquors
B. & S.
Bank Bk
Jewelry
Sal. & Billiards
Dwgs 2d

Carriage Works.

Hotel Main
Lodge
Furniture
Hardw. & Storage
Hardw. & Storage
Shoe Maker
Sal.

Scale of Feet.
50 40 30 20 10 0 10 20 30 40 50 100 150

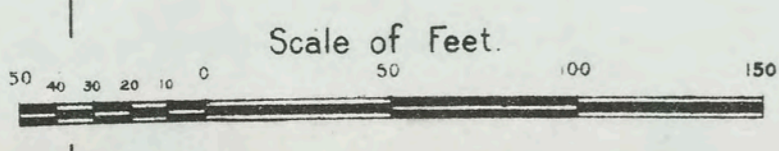
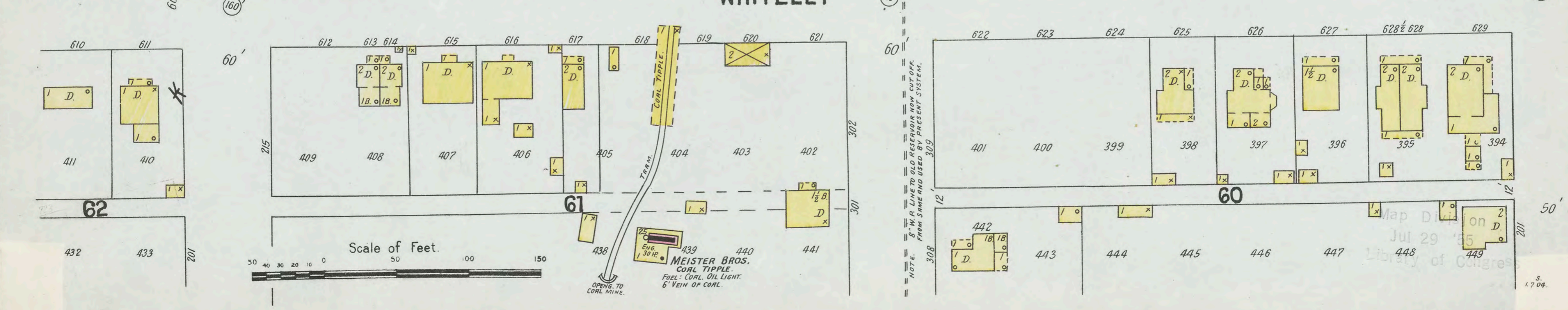
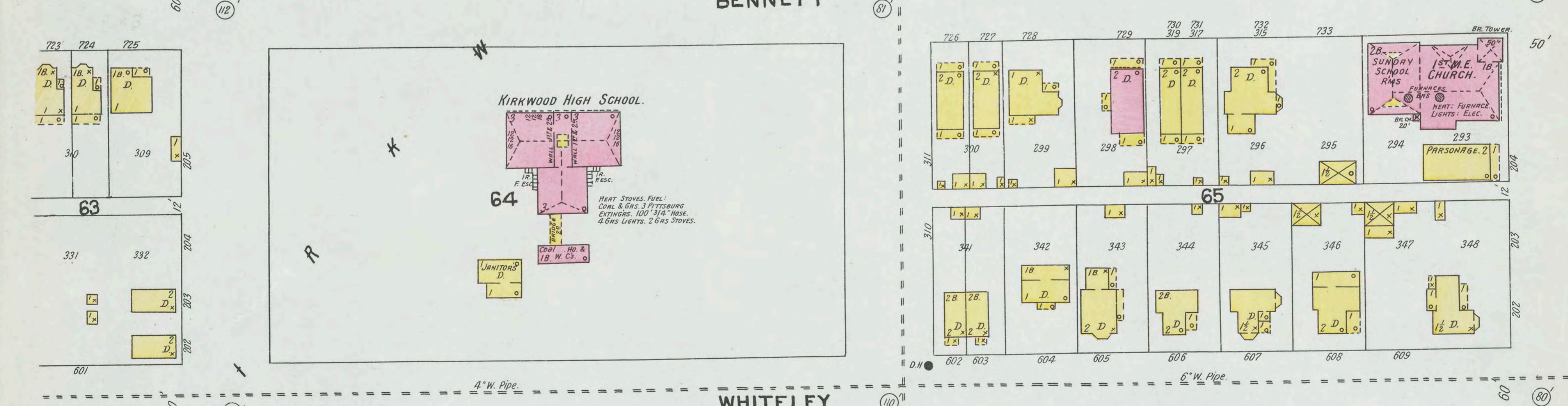
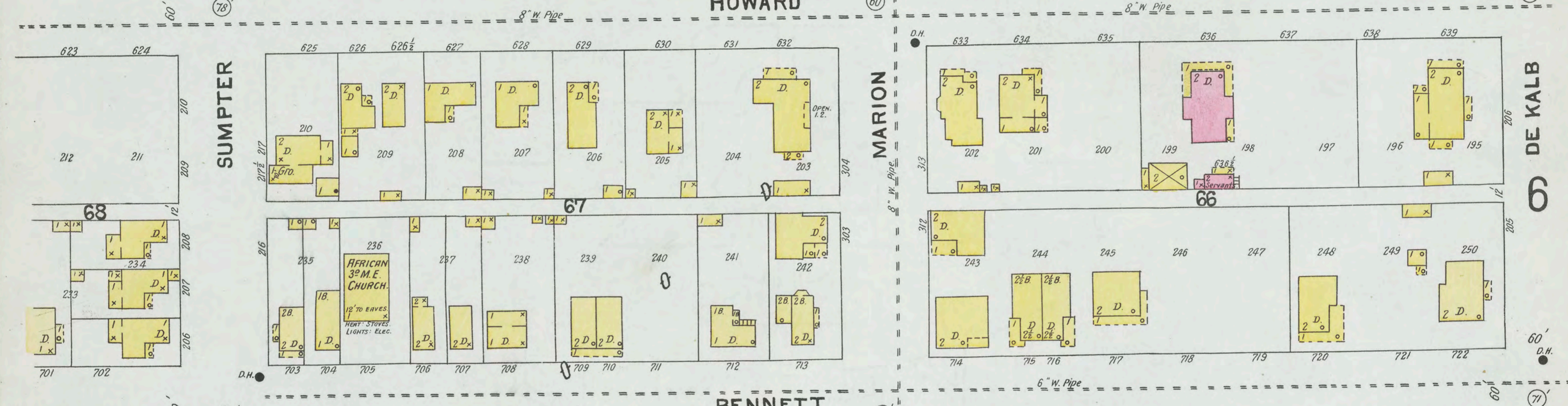
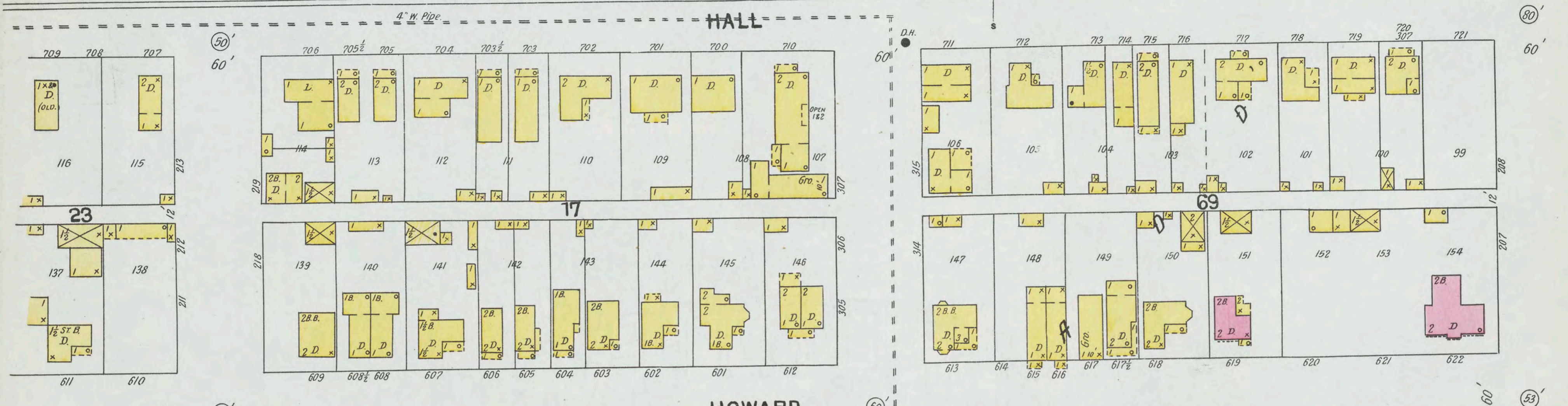
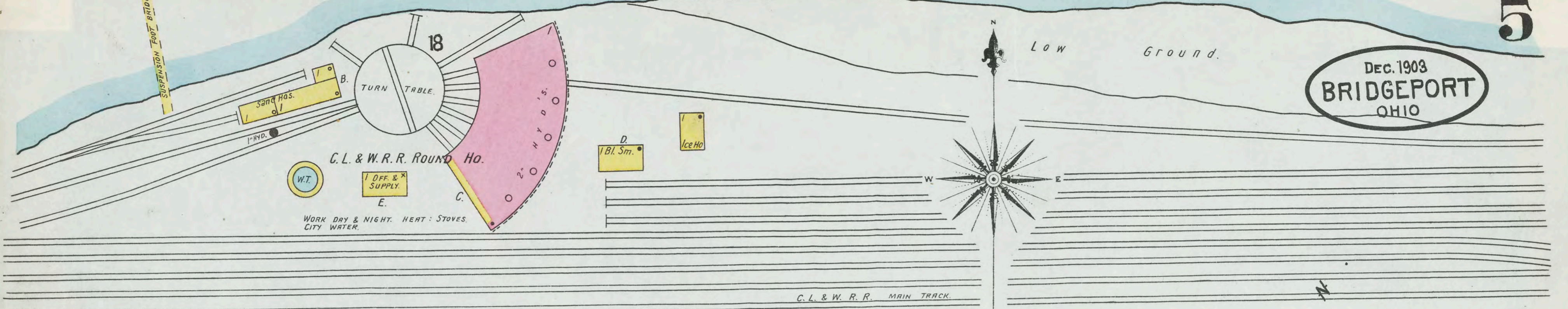
Div on
Jul 29
1905

Wheeling

Creek.

Low Ground.

DEC. 1903
BRIDGEPORT
OHIO

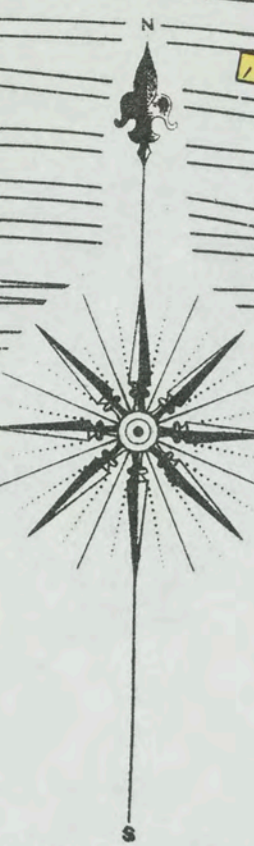


NOTE: 8" W. PIPE TO OLD RECEIVING ROOM OUTSIDE.
FROM SAME AND USED BY PRESENT SYSTEM.

Map Division
Jul 29 1905
Library of Congress

Wheeling Creek

LOW GROUND



DEC. 1903
BRIDGEPORT
OHIO

C.L. & W.R.R. Freight Depot.

MT. ZION
COLORED
BAPTIST
CHURCH.

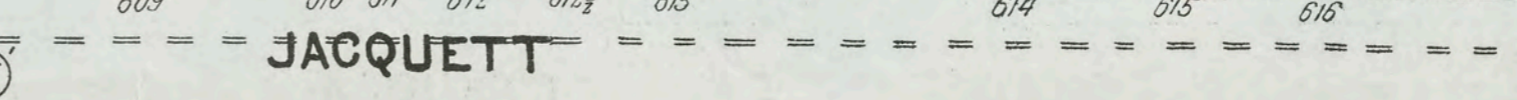
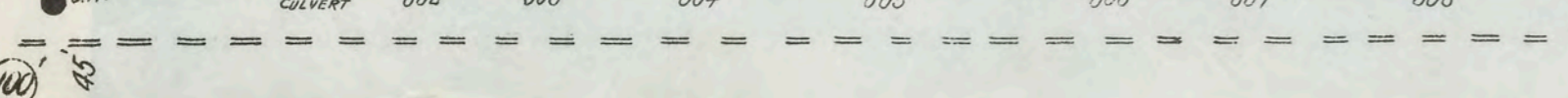
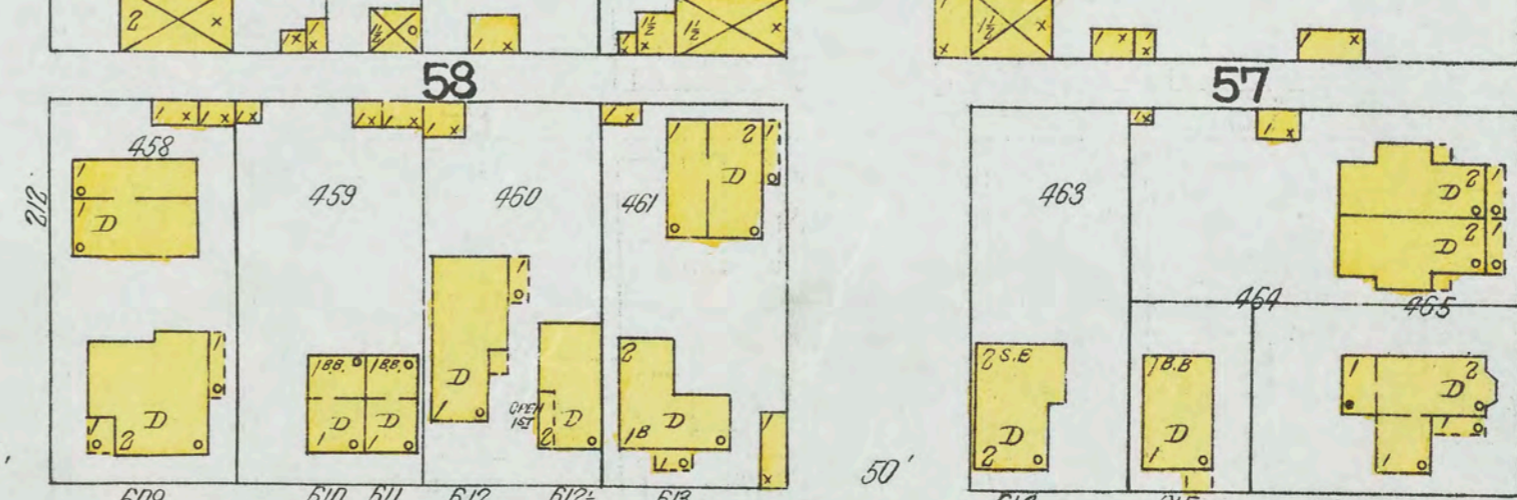
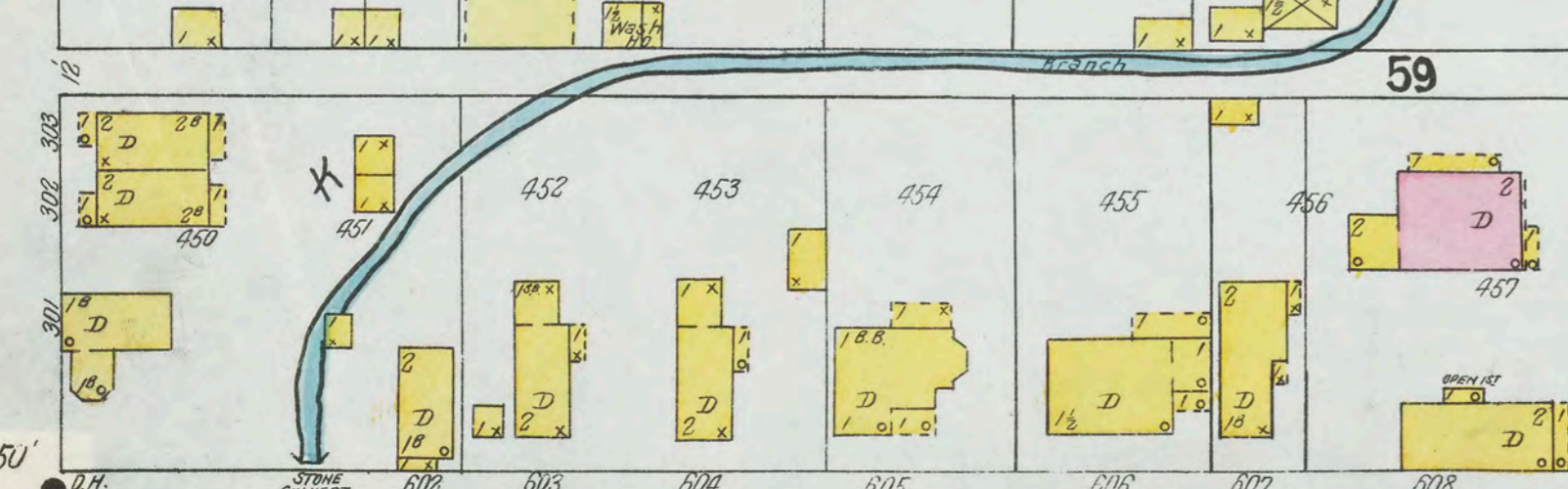
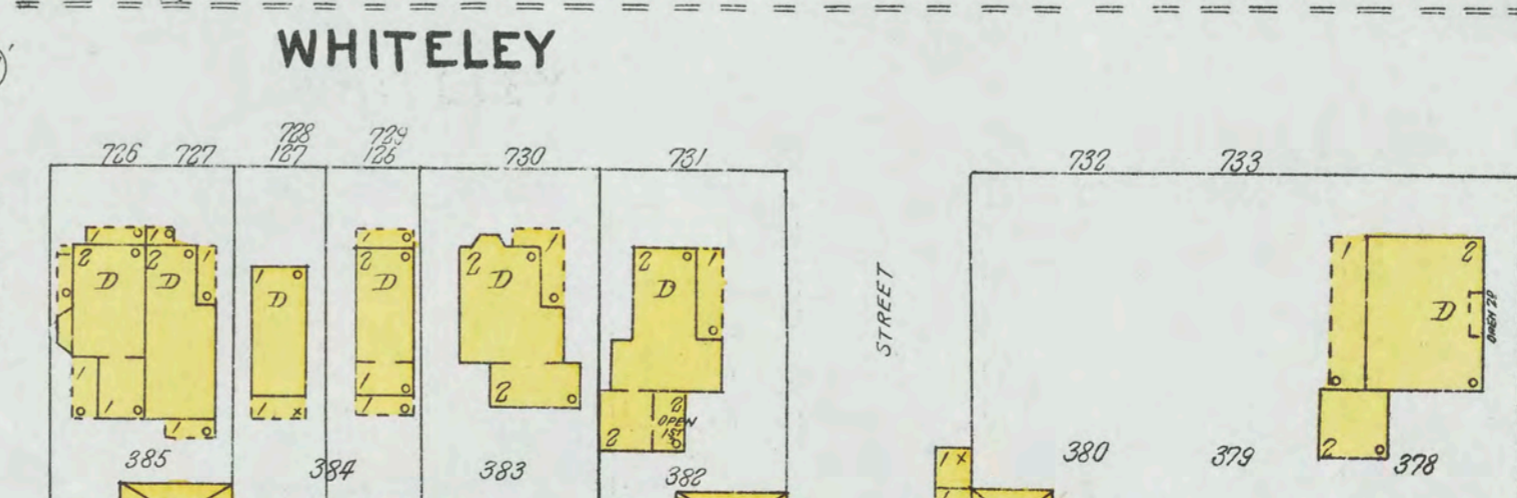
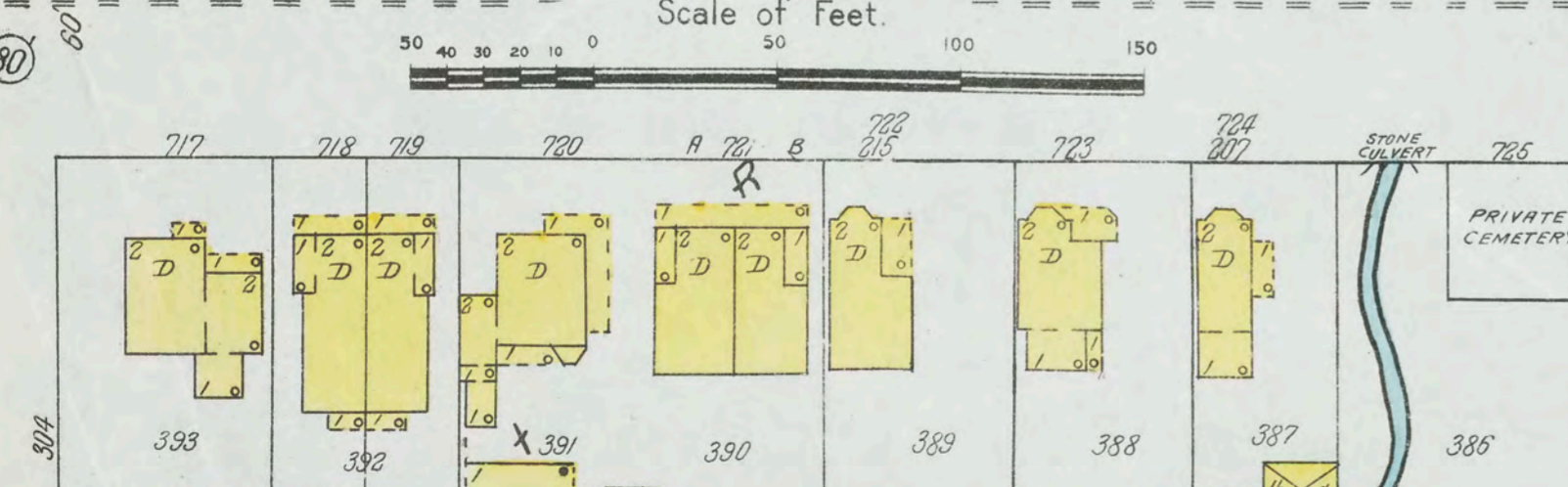
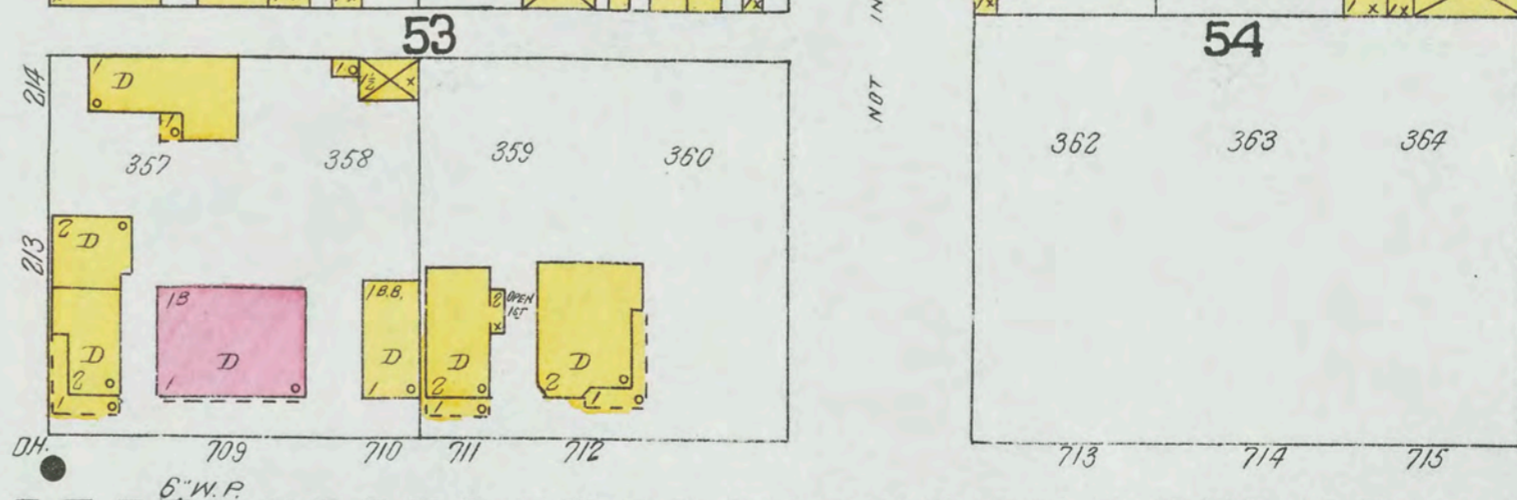
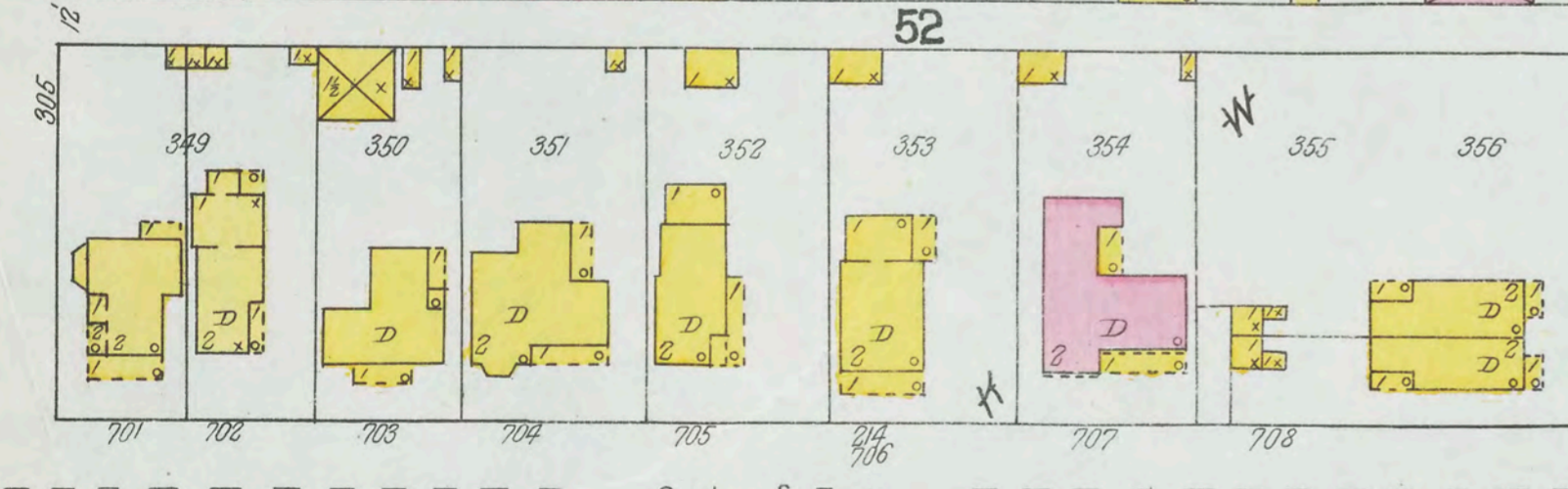
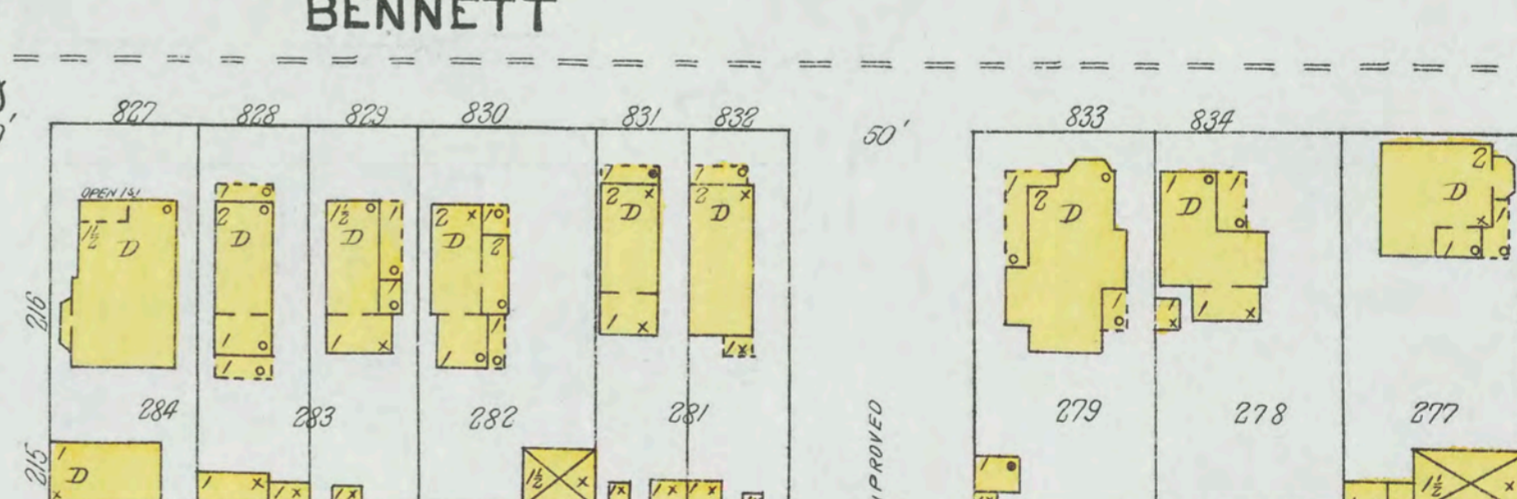
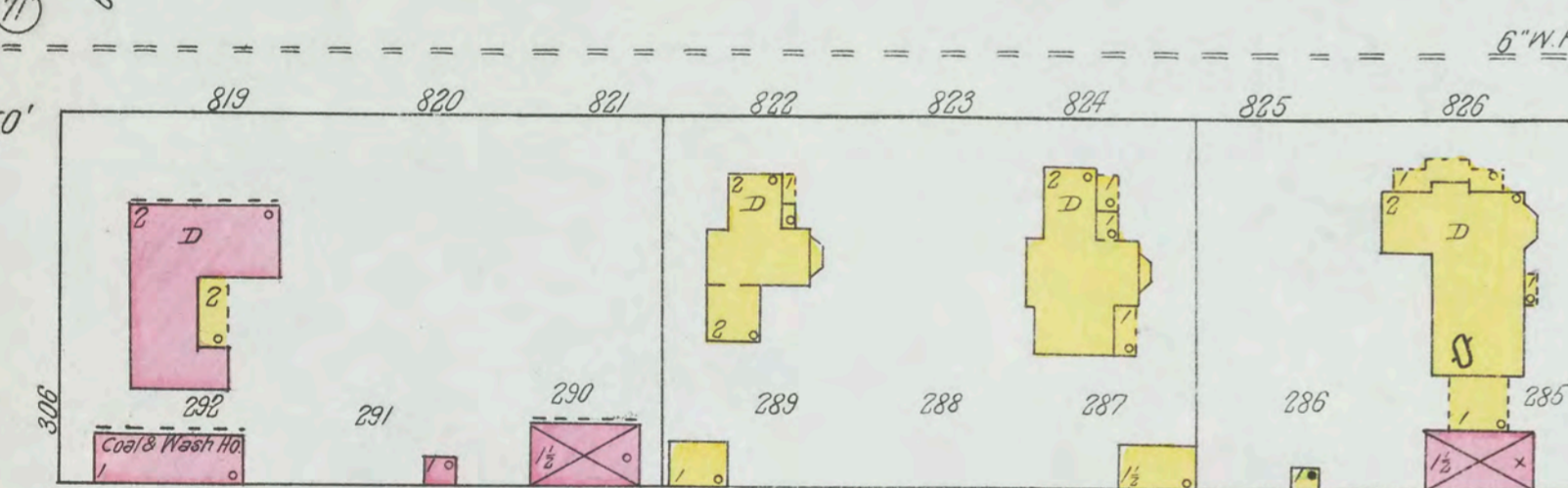
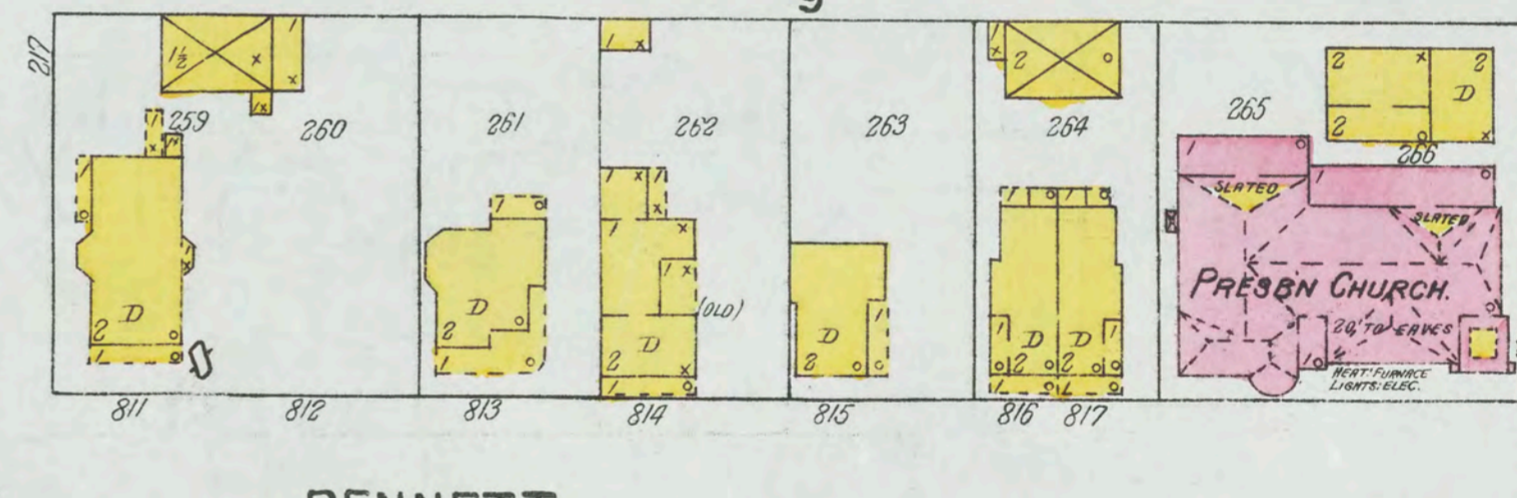
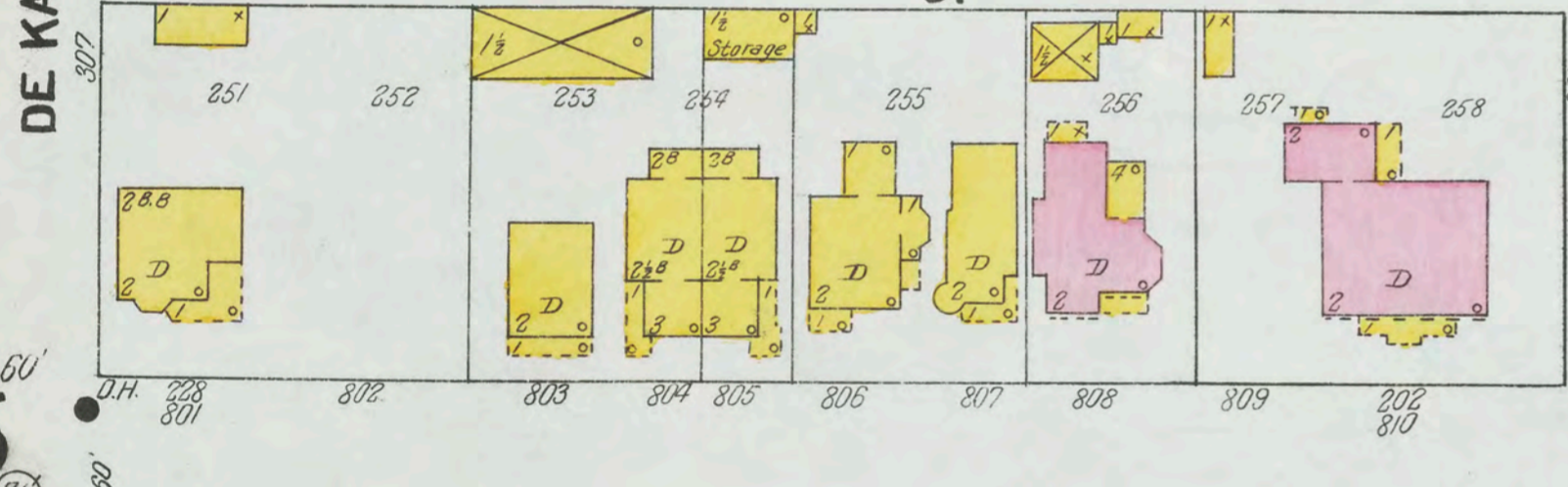
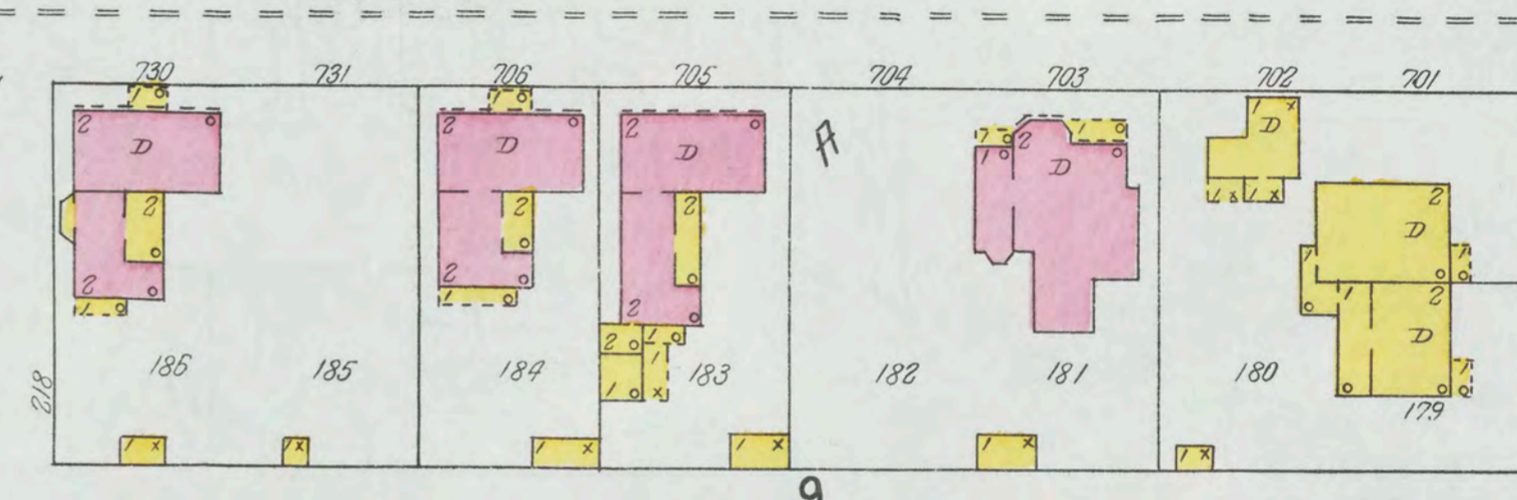
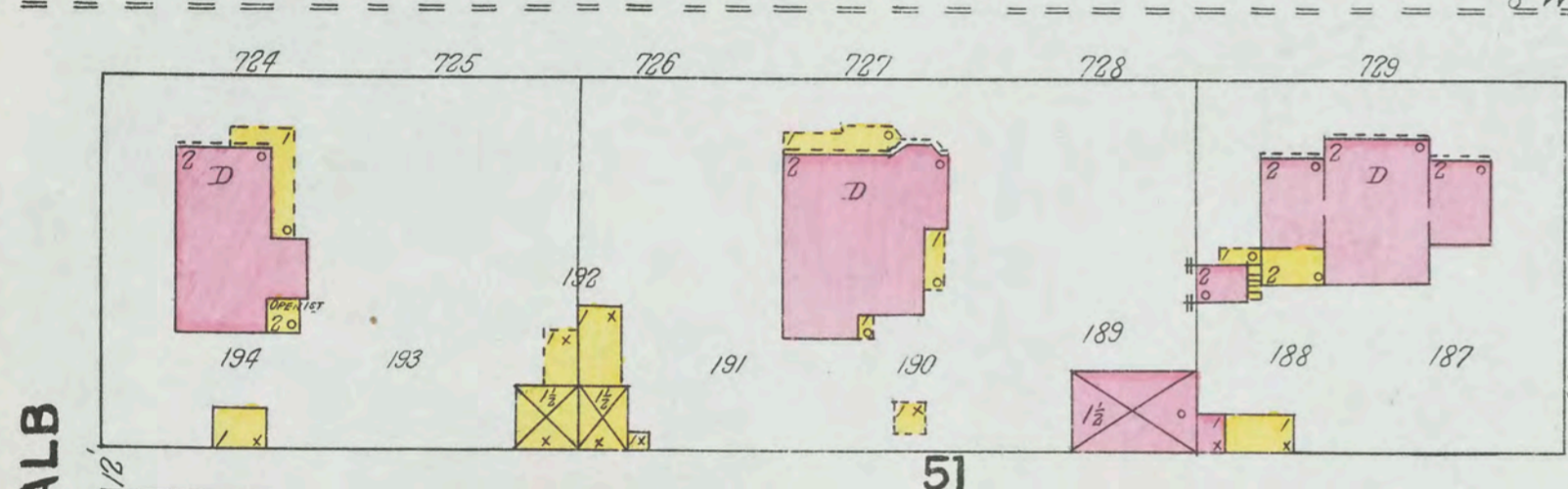
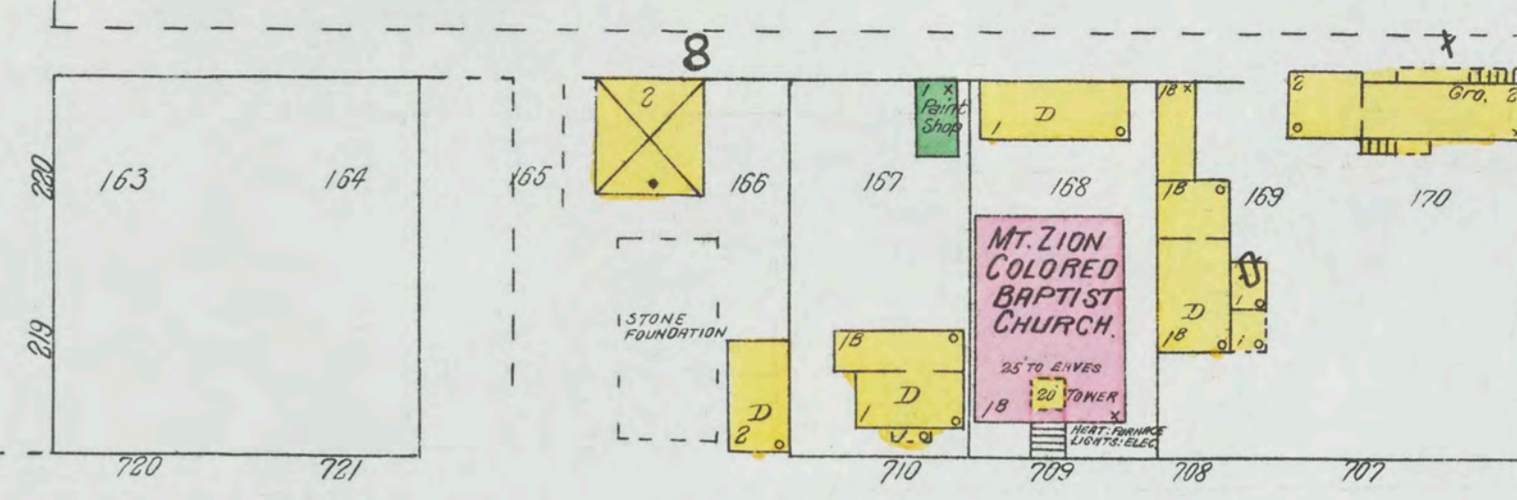
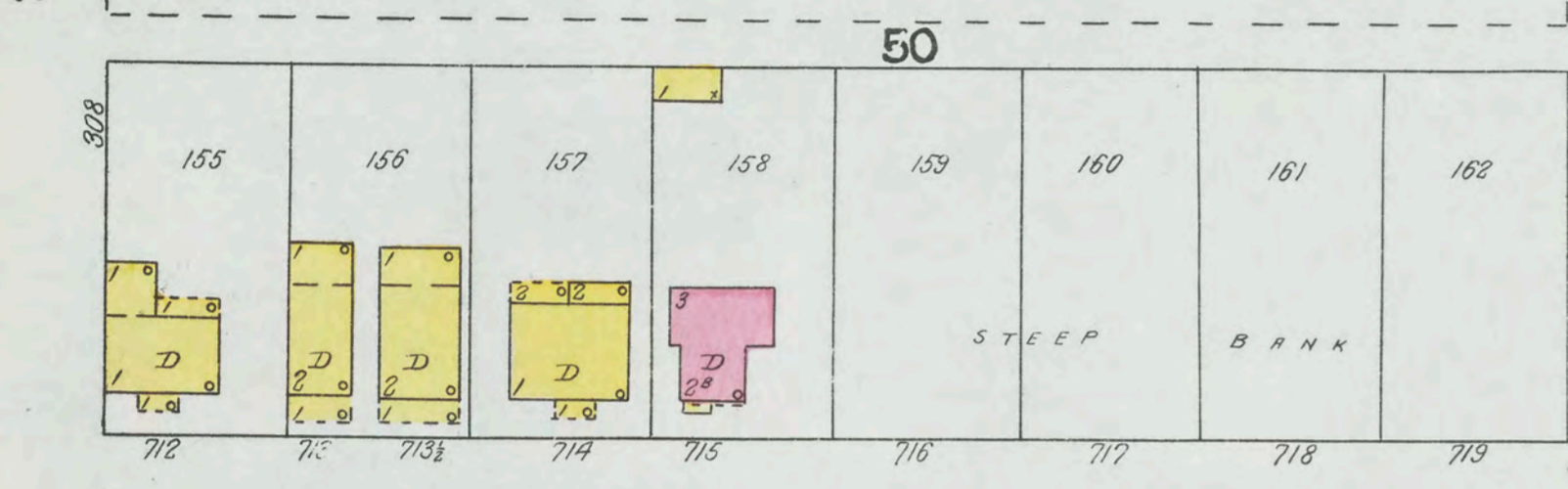
PRESBY. CHURCH.

HOWARD

BENNETT

WHITELEY

JACQUETT



Scale of Feet.

