

WATCHMAN-ON DUTY DRY & WIGHT-AMERICAN CLOCK 8 STATIONS-HOURLY POUNDAGE AT NIGHT-EVERY 2 HOURS DURING DAY-LIGHT-GAS (STATIONARY) & ELIC. FUEL & POWER-GAS-HEAT-STEAM-COMPLEATE SYSTEM OF REFRIGER AUTO SPRINKLERS MET IN SUMMER-DRY IN WINTER. RT SUPPLY: CITY WATER BY 4 5 H. PIPE PRESSURE 75 LBS 20 SUPPLY DRIVE TRINK ON HILL N.W. OF BLDGS ELEY 100' CAPACTY 60 000 GALS 1800 HERTZ ON SYSTEM SPACED 9' AVAILABLE FOR FIRE: 300' 25' UNDERWATERS COTTON ROSE ATTD. OUTSIDE 600' 25' UNDERWATERS COTTON ROSE ATTD. INSIDE. CITY WATER-54 DRY-EXCELSIOR FIRE EXTING. DISTRIED-1 BARBOCK N OFF. 8 WATER BALS & 5 PRILS-DISTRIBD.

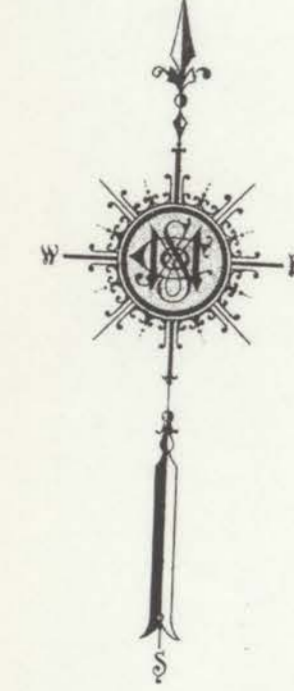
MEISTER BROS. CEMENT WORKS Not in Operation

located 1/2 Mile S. of Penna. Station.

Located 1/2 Miles W. of Town Hall

LINCOLN AV. (BANK)

BRIDGE



Scale of Feet. 0 50 100 150

Wheeling Creek

2

LOW GROUND

20

3

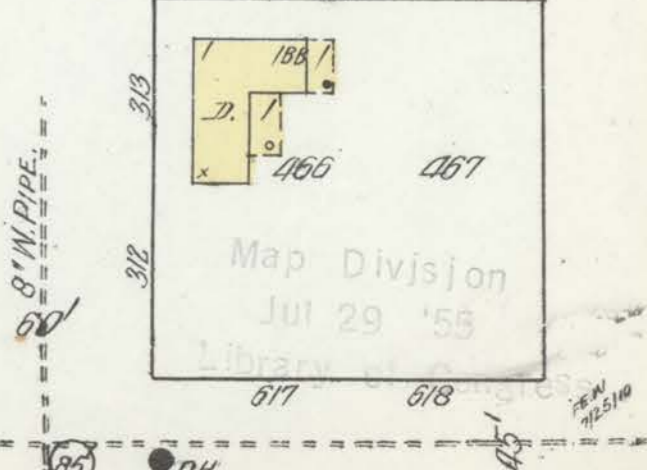
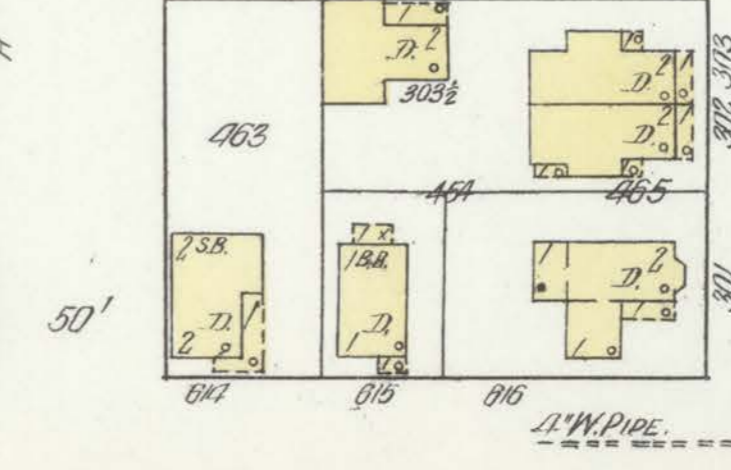
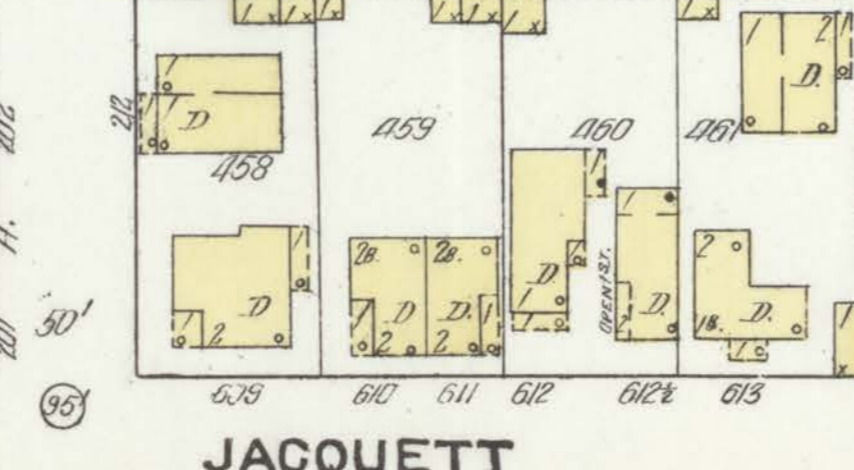
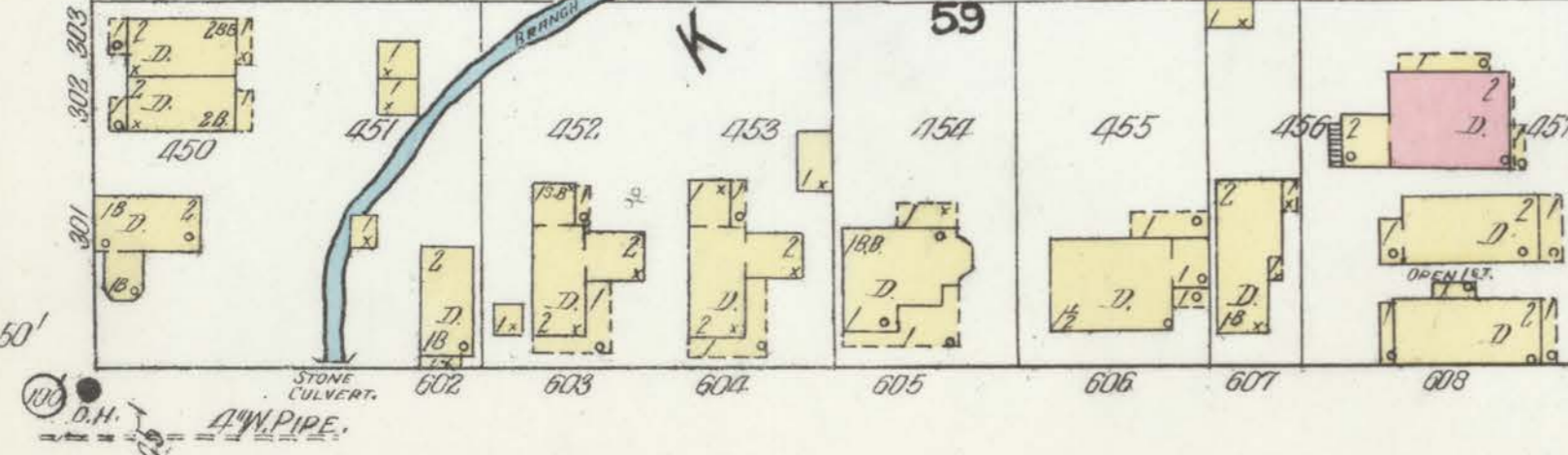
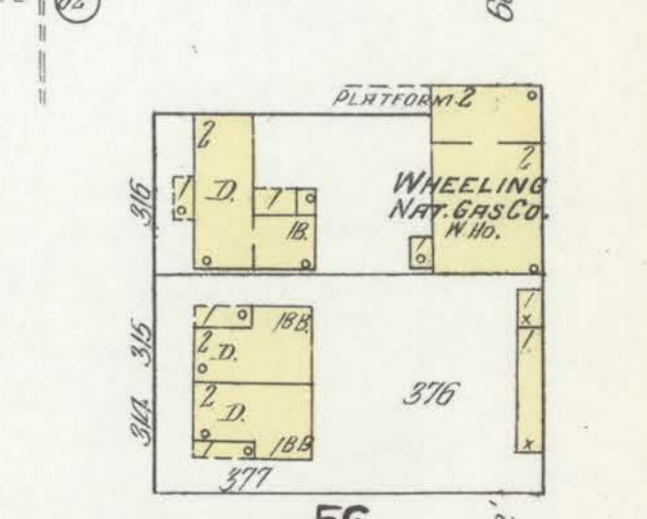
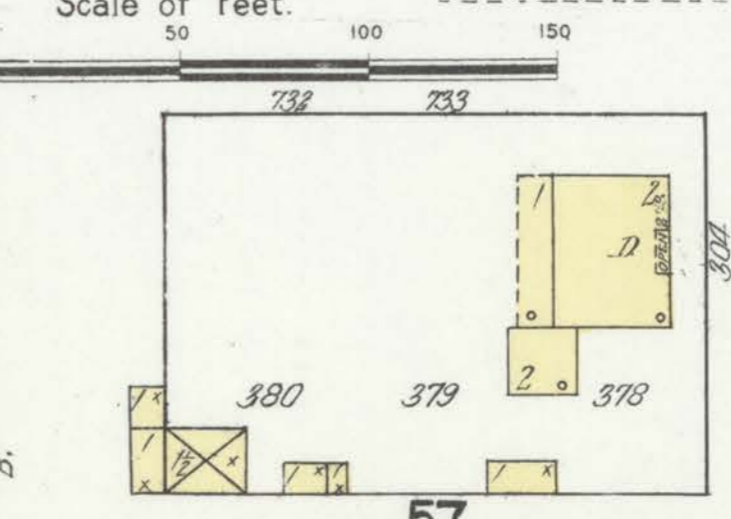
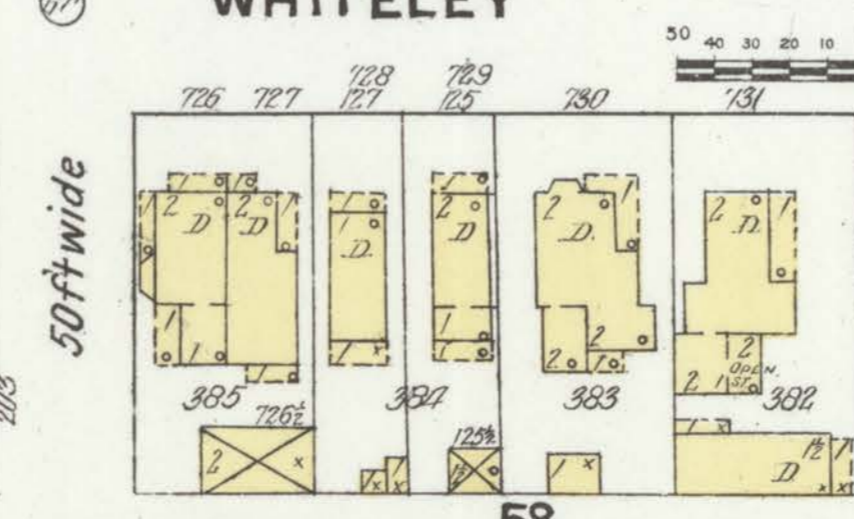
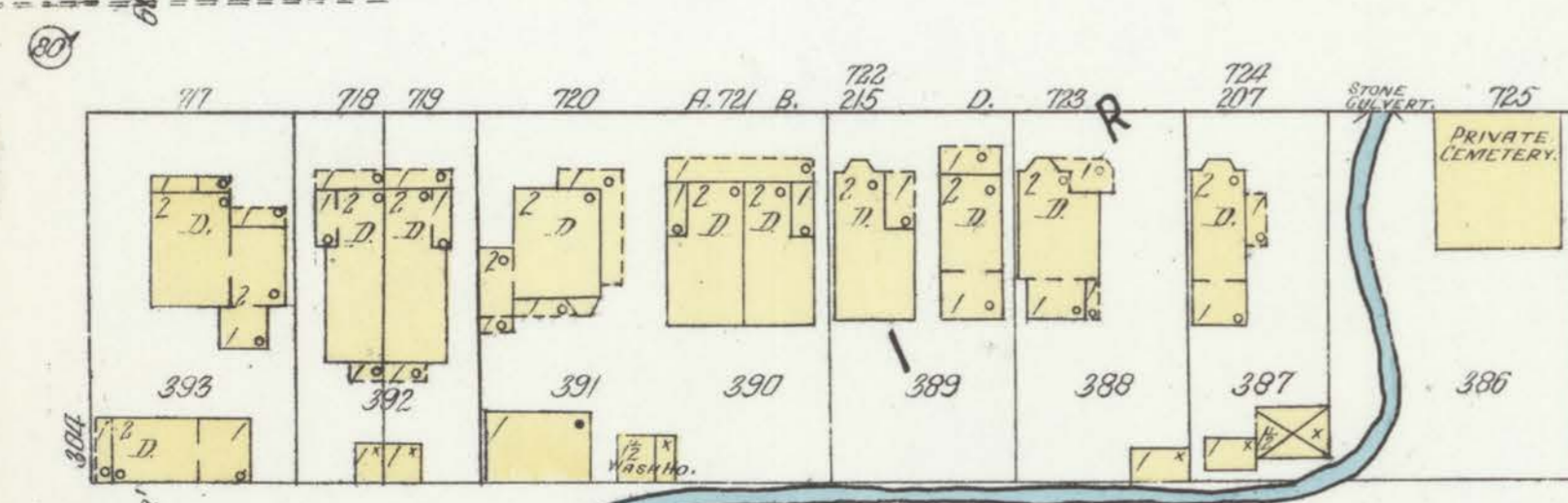
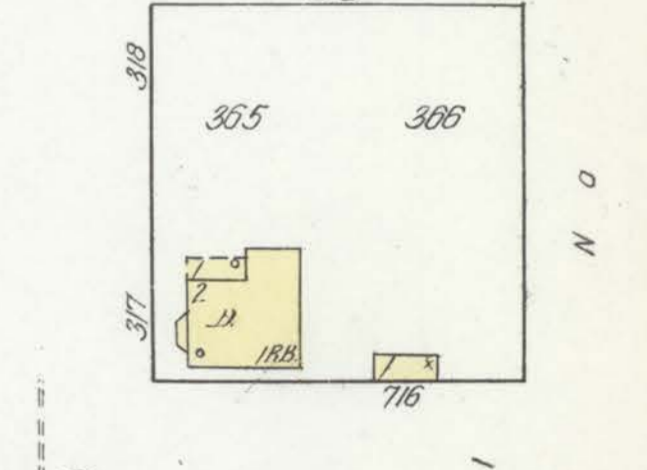
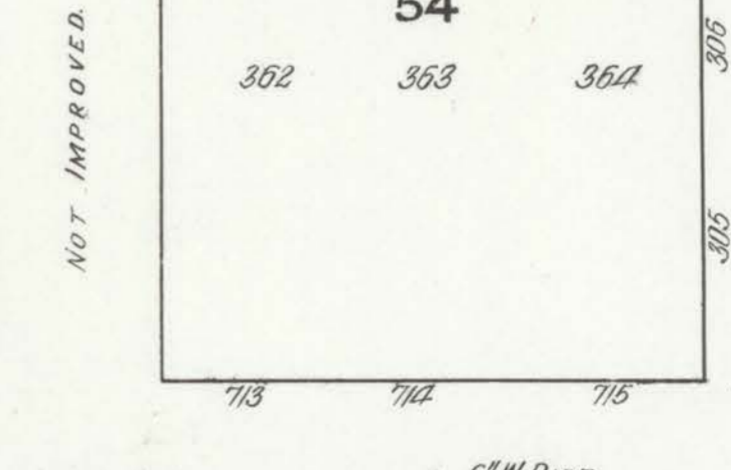
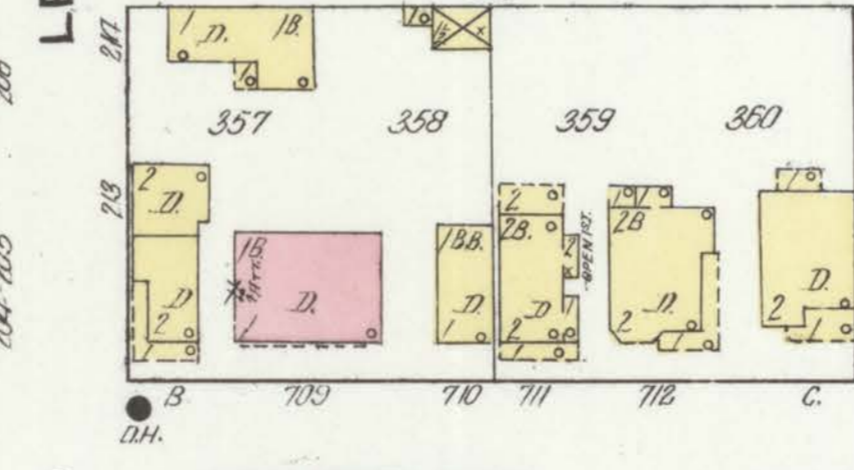
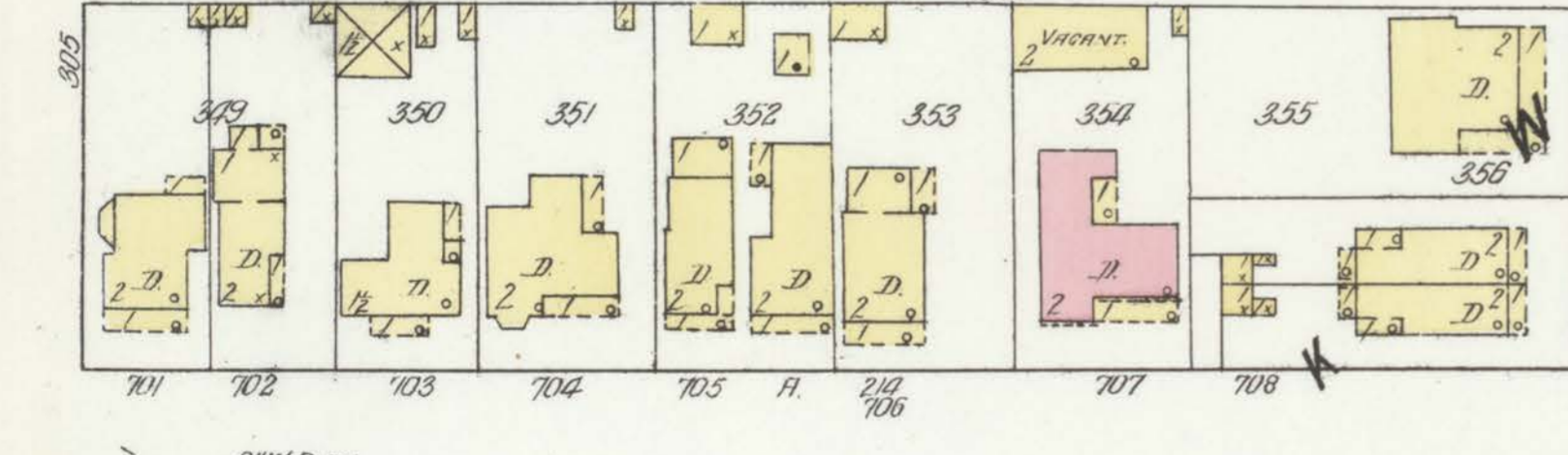
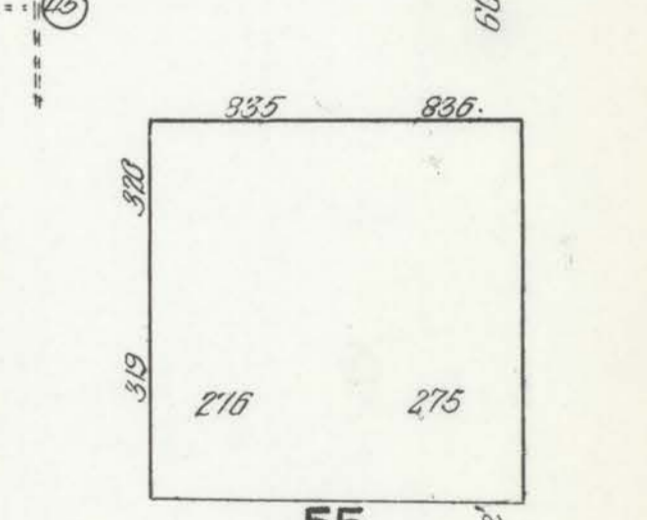
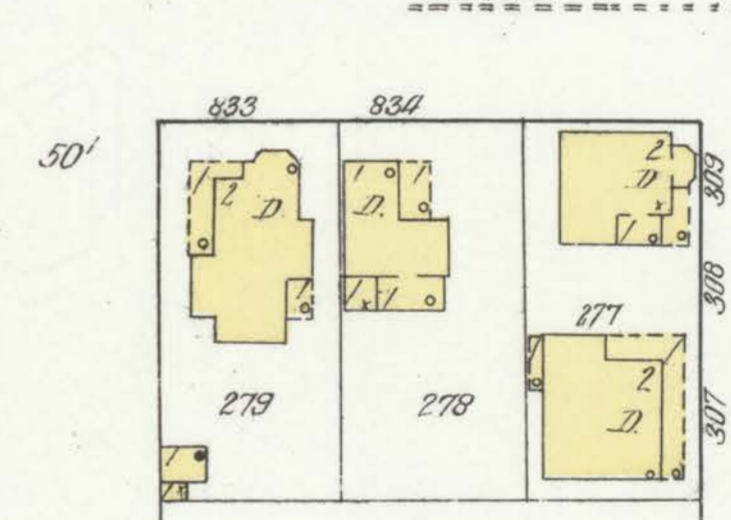
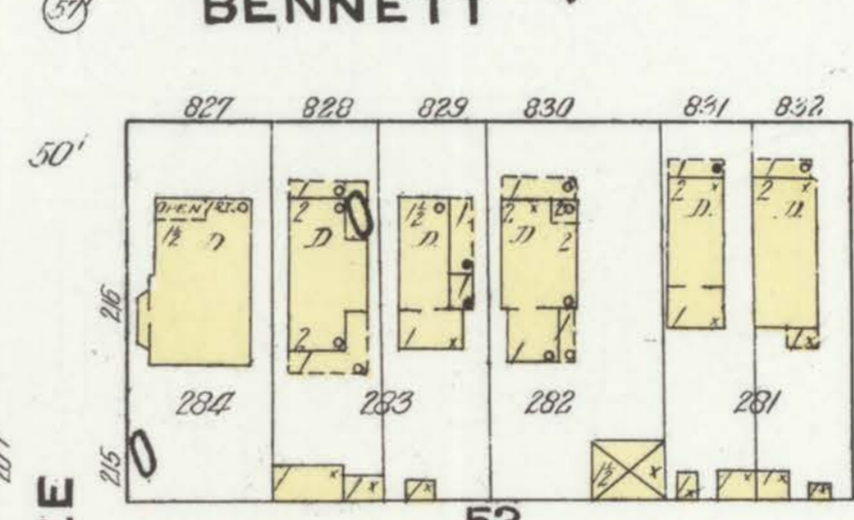
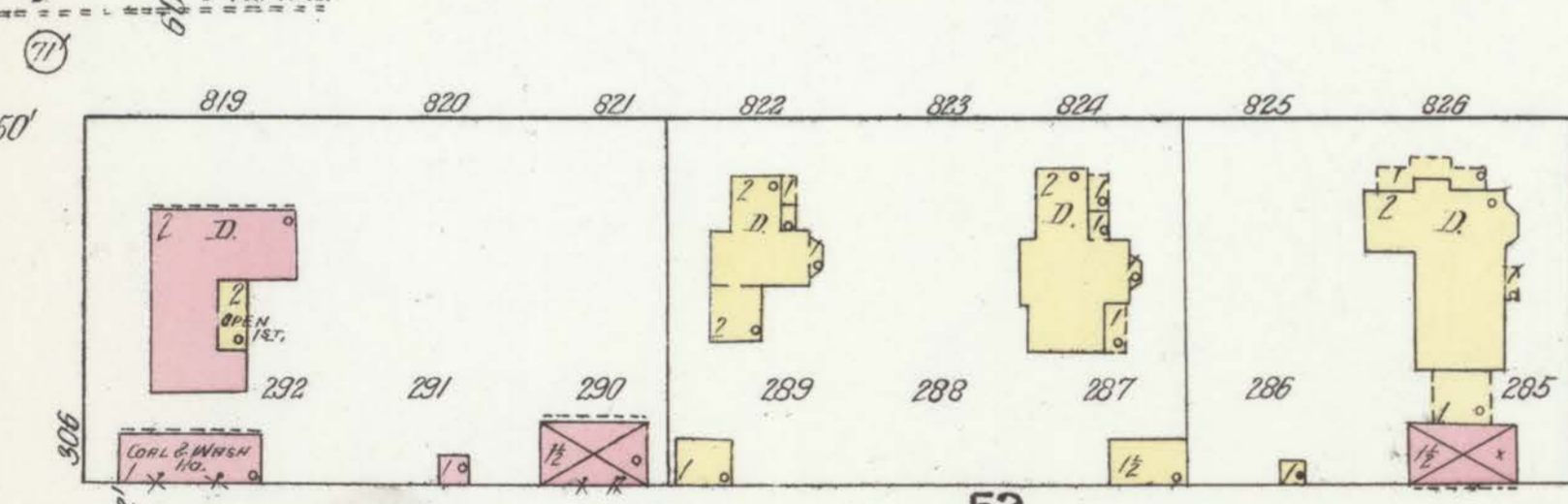
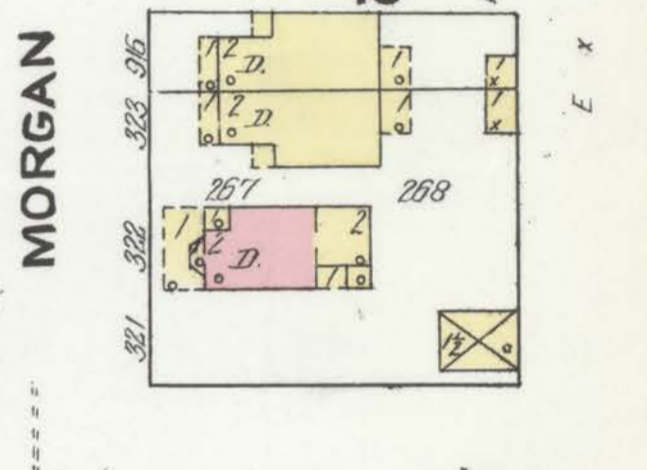
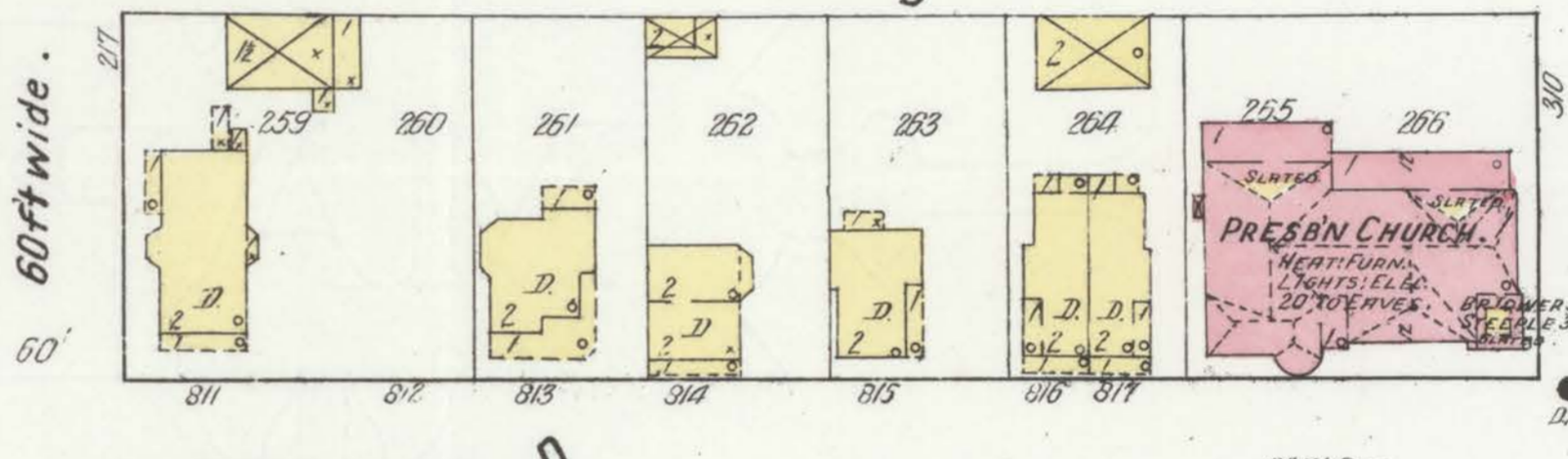
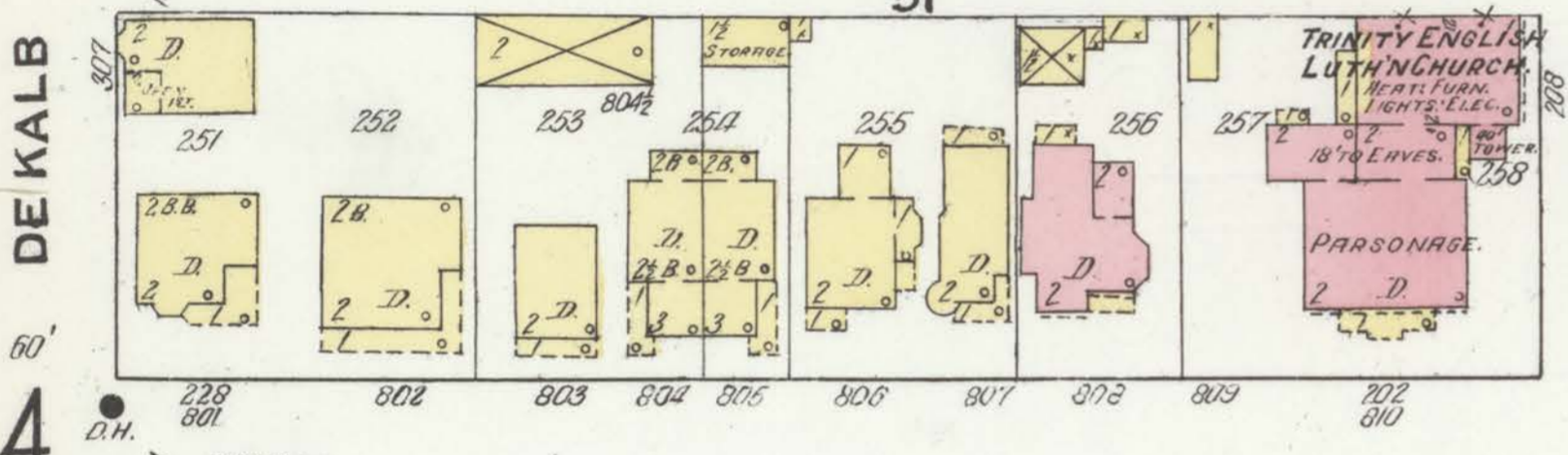
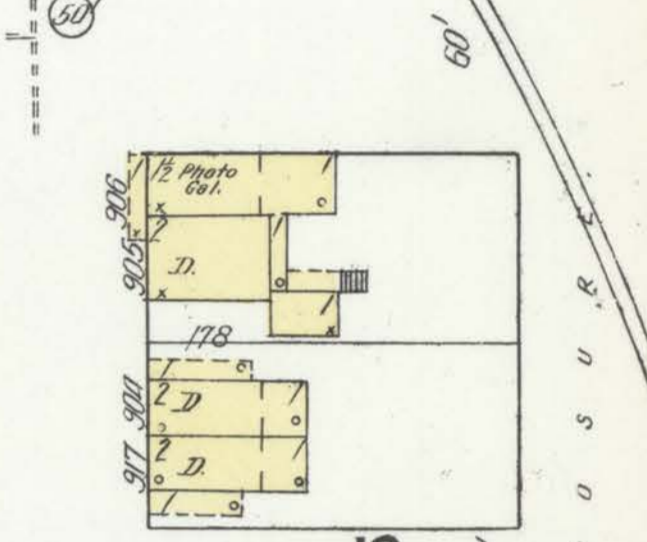
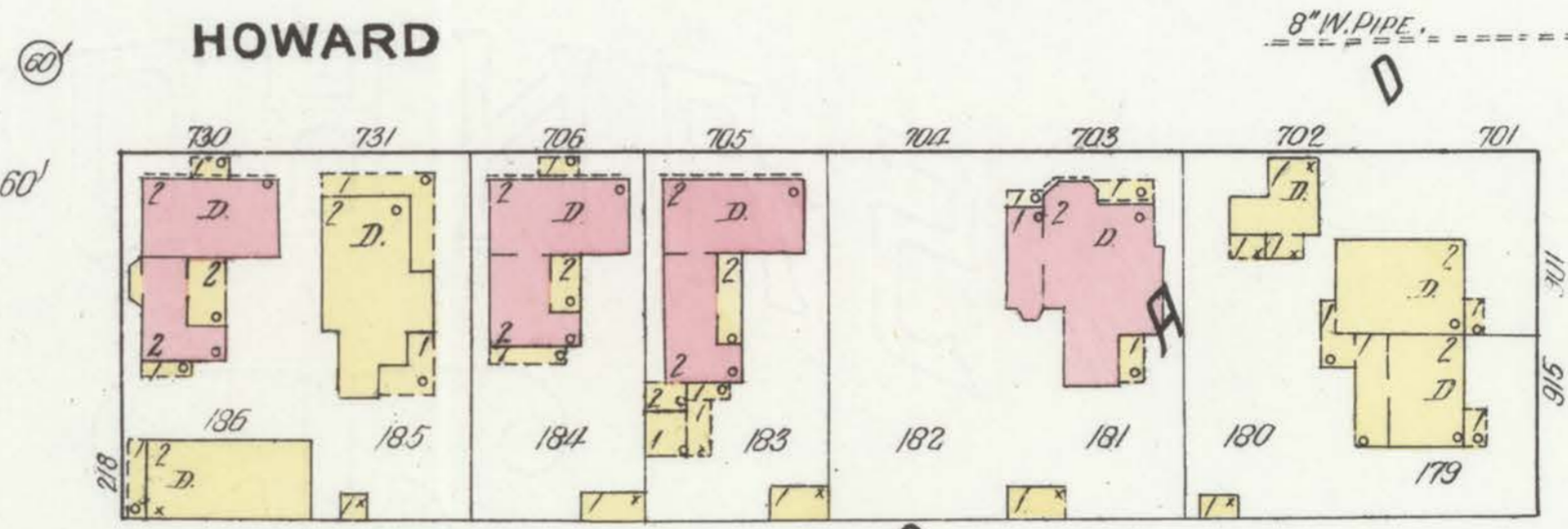
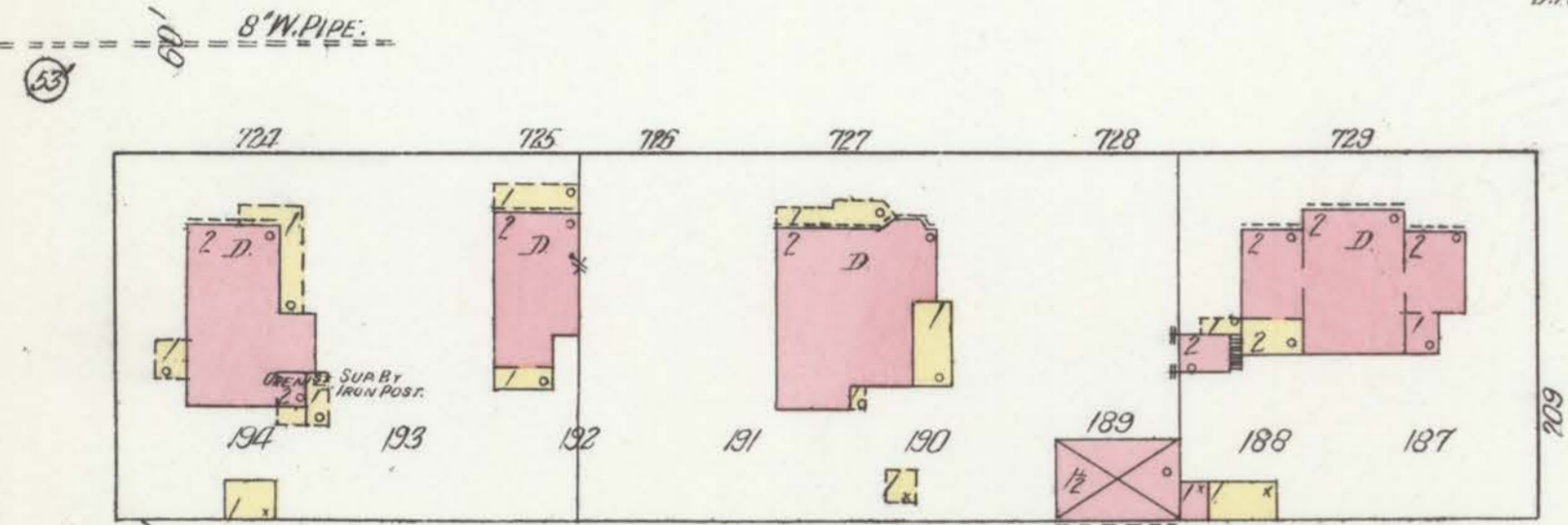
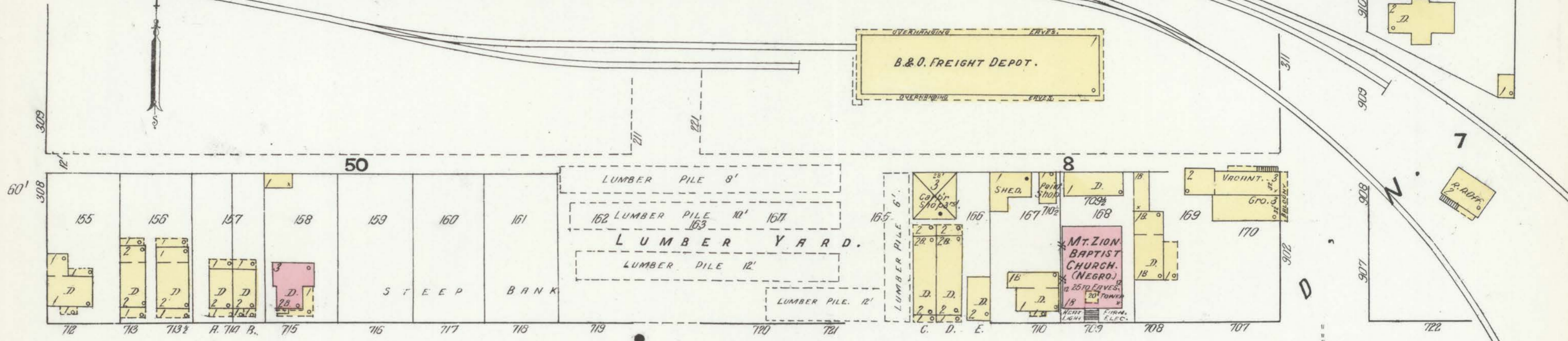
21

JULY 1910
BRIDGEPORT
OHIO

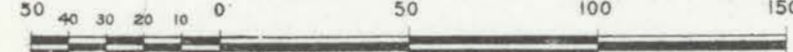


B. & O. R. R.

B. & O. FREIGHT DEPOT.

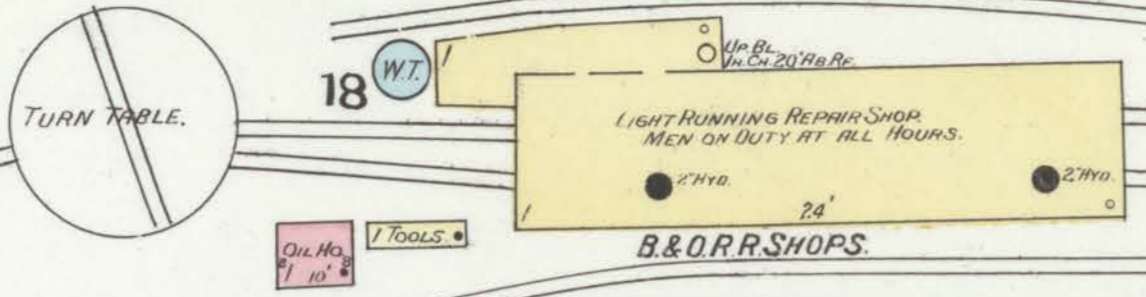


Scale of Feet.



Map Division
Jul 29 '58

JULY 1910
BRIDGEPORT
OHIO



C. L. & W. R. R. MAIN TRACK.



HALL

HOWARD

BENNETT

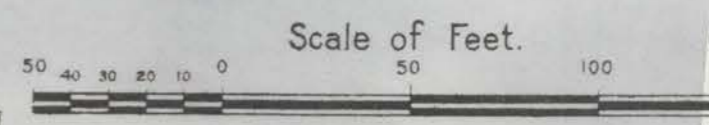
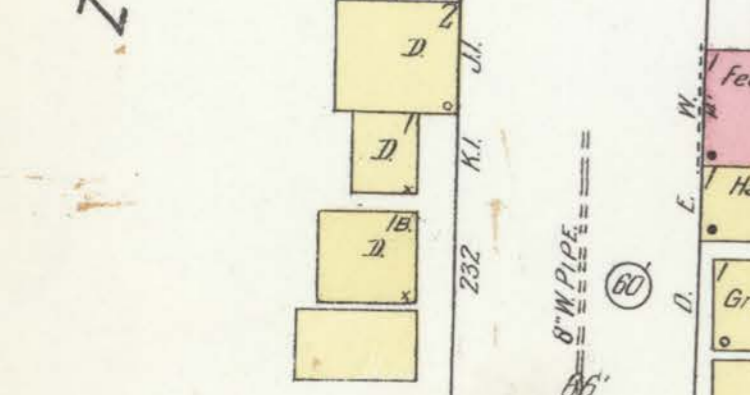
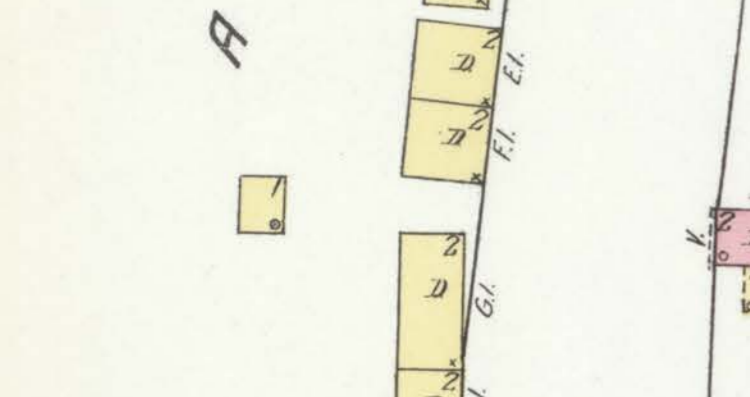
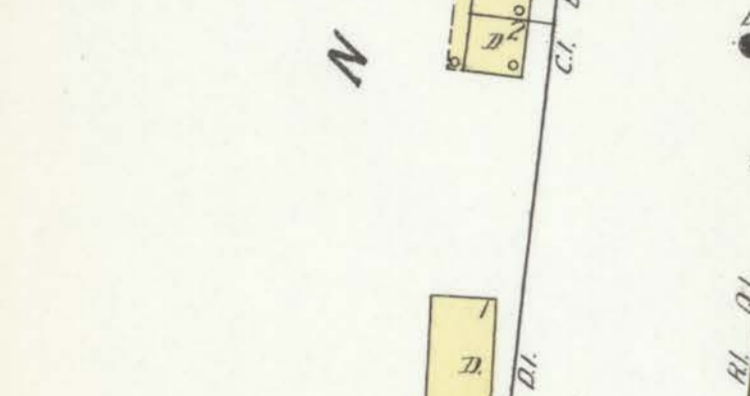
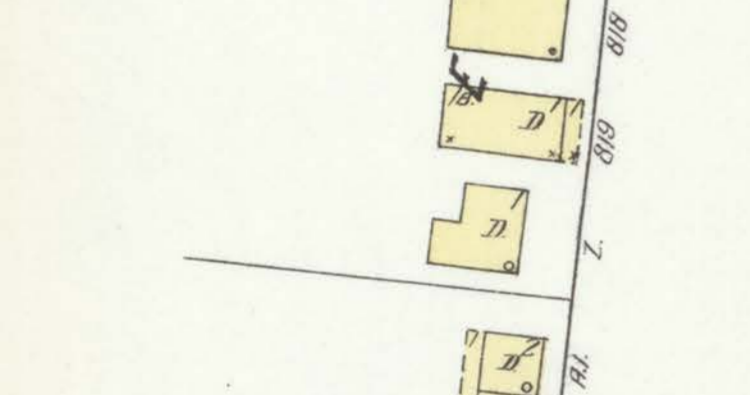
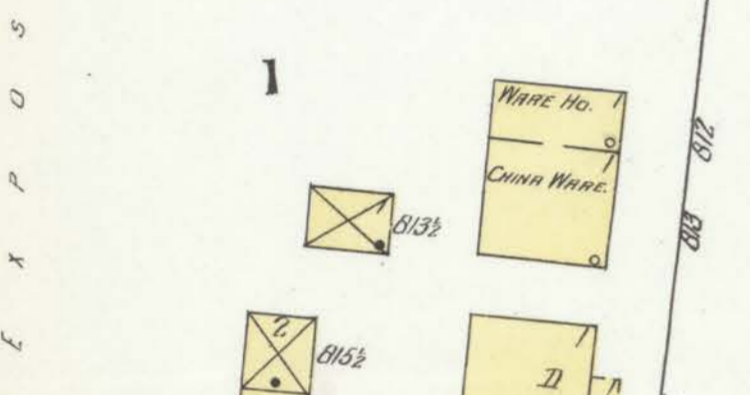
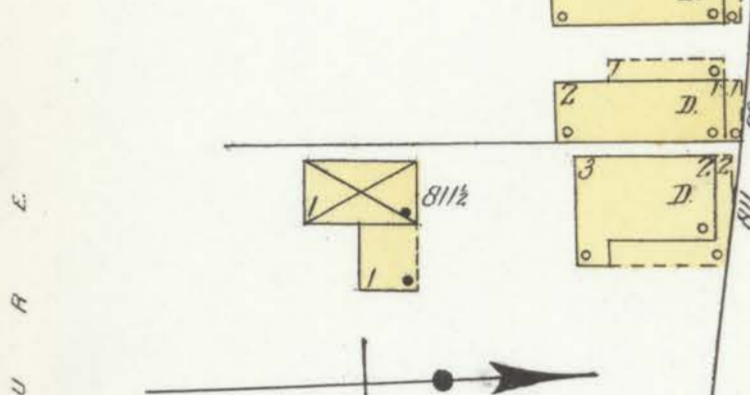
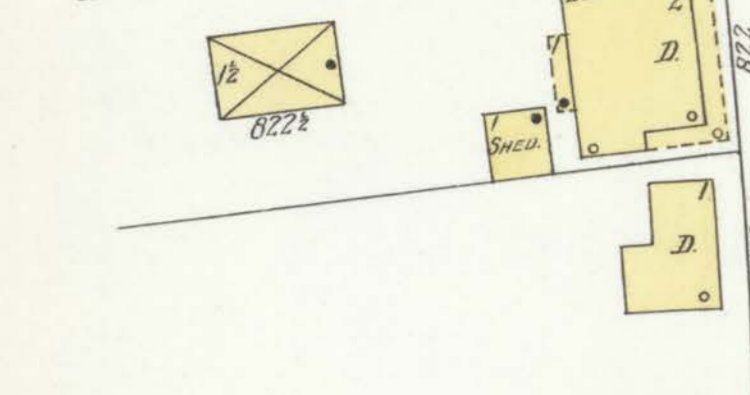
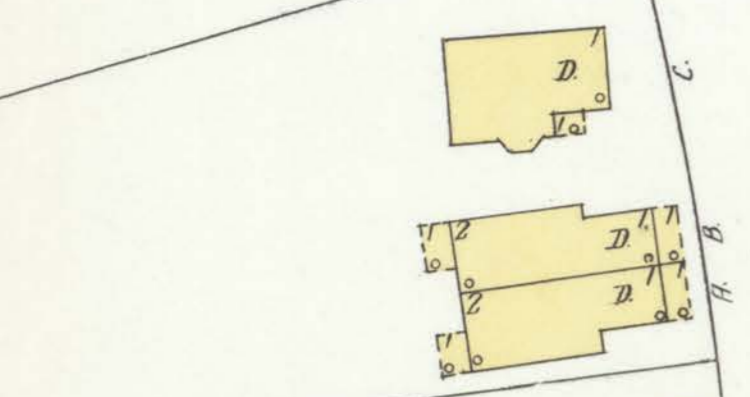
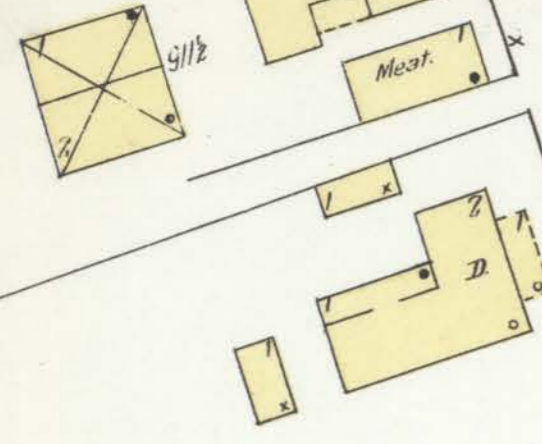
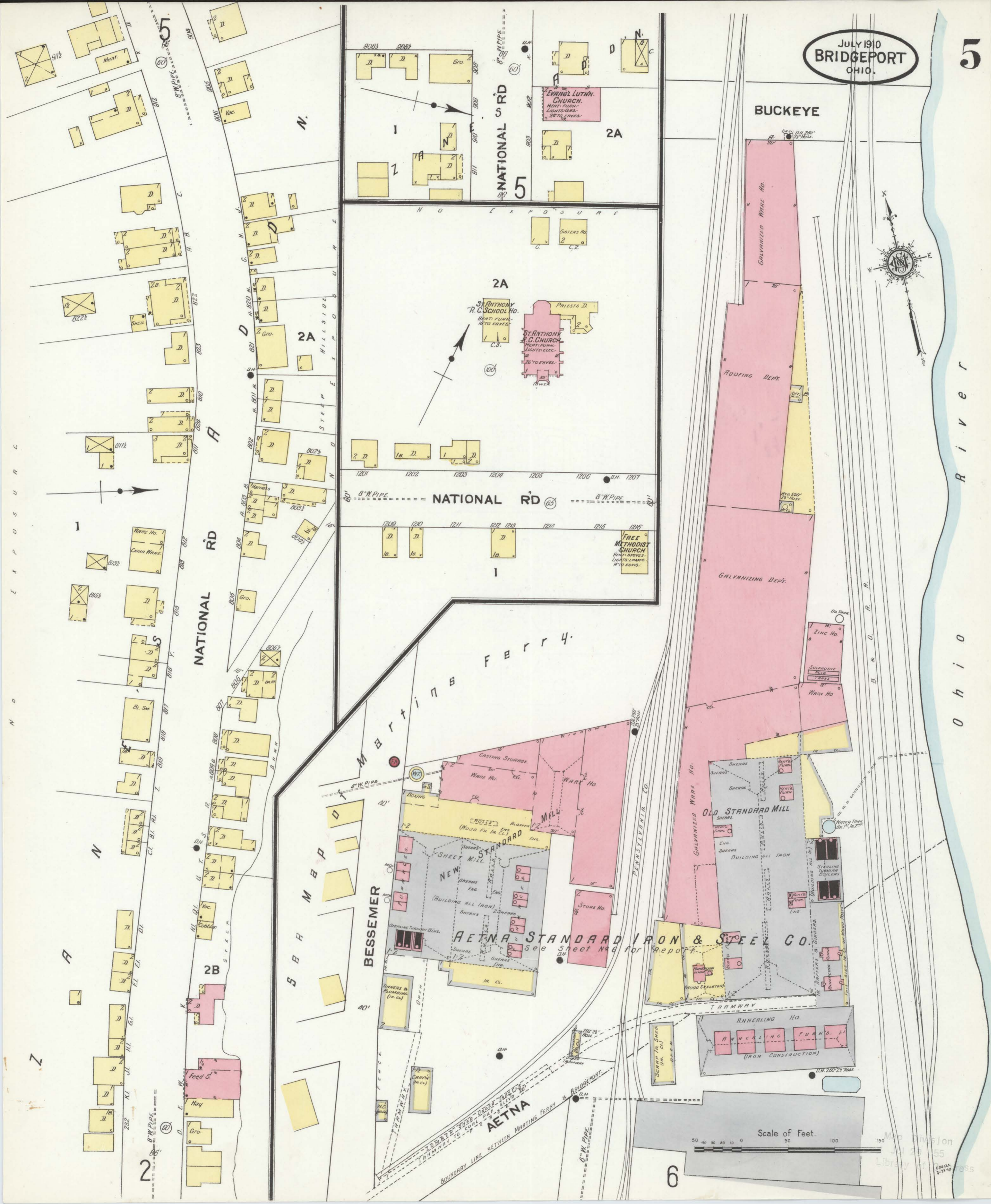
WHITELEY

DE KALB

Scale of Feet.

July 29 1910

Congress



Map Division
Jul 29 1910
Library of Congress

