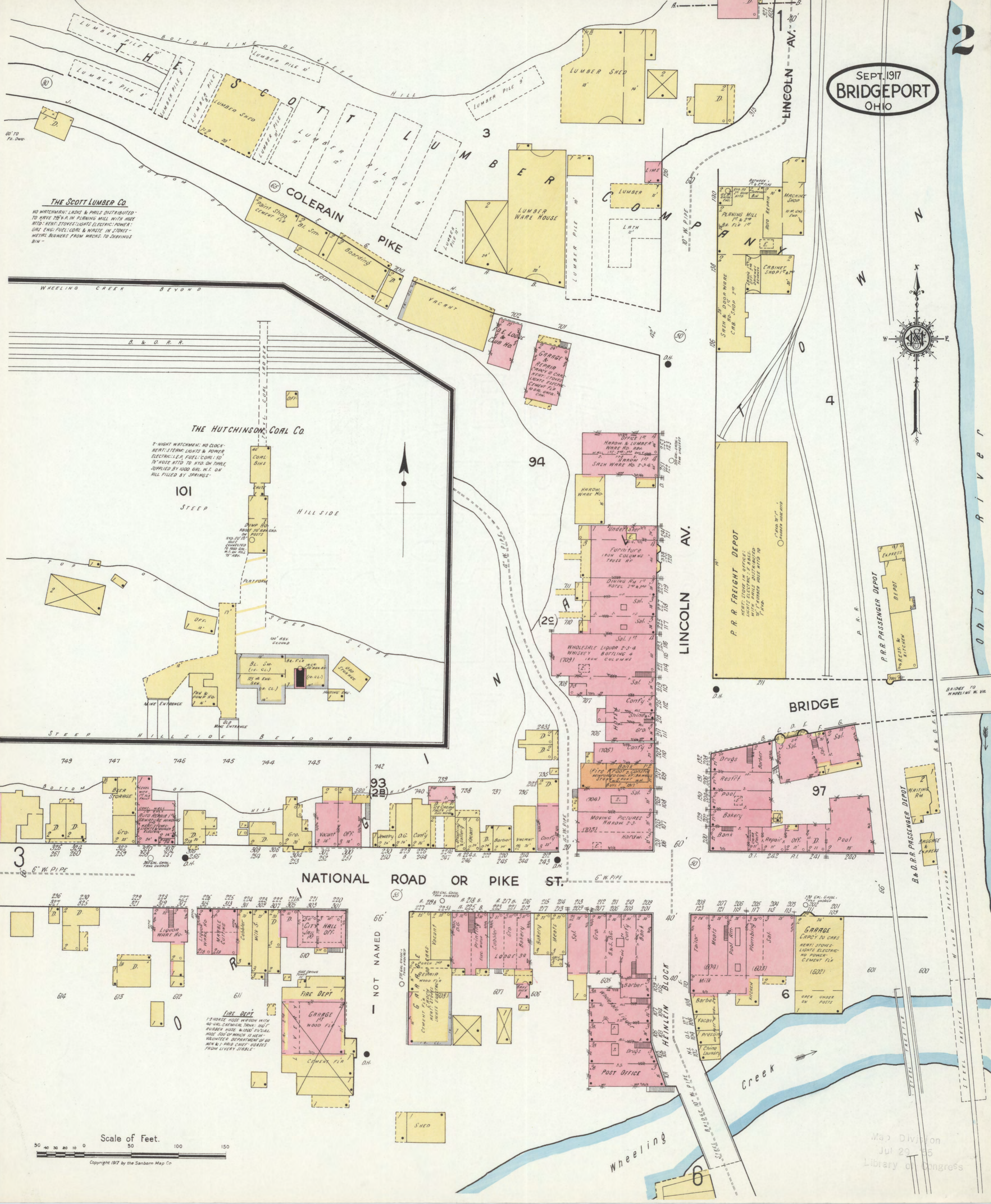


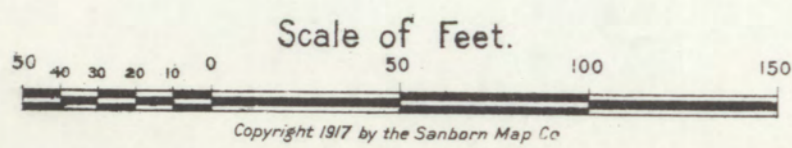
SEPT. 1917
BRIDGEPORT
OHIO



THE SCOTT LUMBER CO.
NO WATCHMAN; LADS & PAULS DISTRIBUTED TO HAVE 25¢ R. IN PLANNING MILL WITH AGE BIRD; HEAT STOVES; LIGHTS ELECTRIC; POWER GAS; ENG. FUEL; COAL & WASTE IN STOVES - METAL BLOWERS FROM MACHS. TO SHAVINGS BIN -

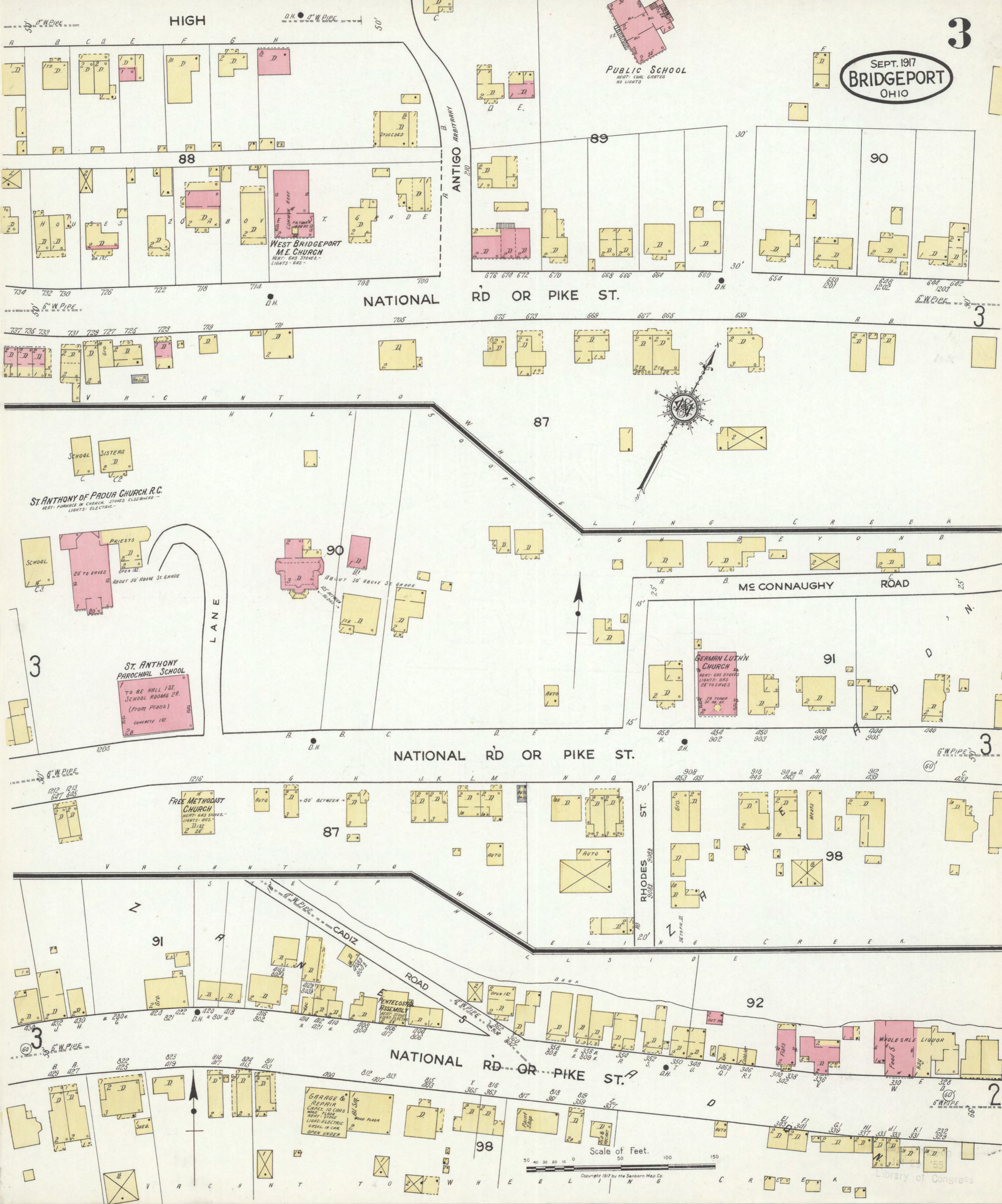
THE HUTCHINSON COAL CO.
2-NIGHT WATCHMEN; NO CLOCK; HEAT; STEAM; LIGHTS & POWER ELECTRIC; FUEL; COAL; 30" 12" HOSE ATT'D TO HYD. ON TANK; SUPPLIED BY 1000 GAL. W.T. ON HILL FILLED BY SPRINGS -

FIRE DEPT.
12 HORSE HOSE WAGON WITH 40 GAL. CHEMICAL TANK; 60' RUBBER HOSE; WIND PULVER HOSE; 300' OF WHICH IS NEW; VOLUNTEER DEPARTMENT OF 10 MEN & 1 FIRE CHIEF; BARRIS FROM LIVERY STABLE -



Map Division
Jul 29 1915
Library of Congress

SEPT. 1917
BRIDGEPORT
OHIO



PUBLIC SCHOOL
HEAT: COAL GRATES
NO LIGHTS

WEST BRIDGEPORT
M.E. CHURCH
HEAT: GAS STOVES
LIGHTS: GAS

ST. ANTHONY OF PADUA CHURCH R.C.
HEAT: FURNACE IN CHURCH. STOVES ELSEWHERE
LIGHTS: ELECTRIC

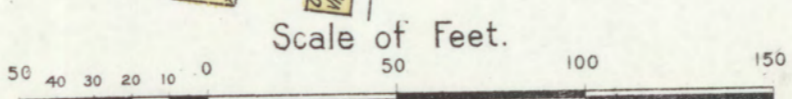
ST. ANTHONY
PAROCHIAL SCHOOL
TO BE HALL 1ST.
SCHOOL ROOMS 2D.
(FROM PLANS)
CONCRETE 1ST

GERMAN LUTH'N
CHURCH
HEAT: GAS STOVES
LIGHTS: GAS
28' TO EAVES

FREE METHODIST
CHURCH
HEAT: GAS STOVES
LIGHTS: GAS
1ST
2' 28"

GARAGE &
REPAIR
CAPAC. 10 CARS
WOOD FLOOR
LIGHTS: ELECTRIC
GASOL. IN CAR
OPEN UNDER

WHOLESALE LIQUOR
FOODS



Wheeling Creek



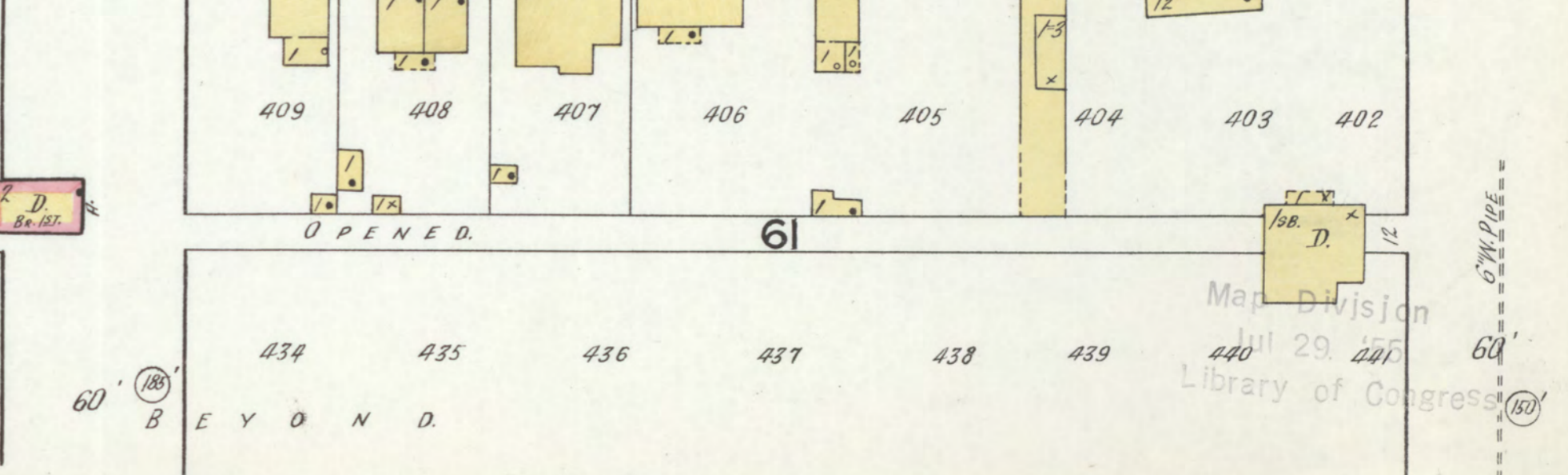
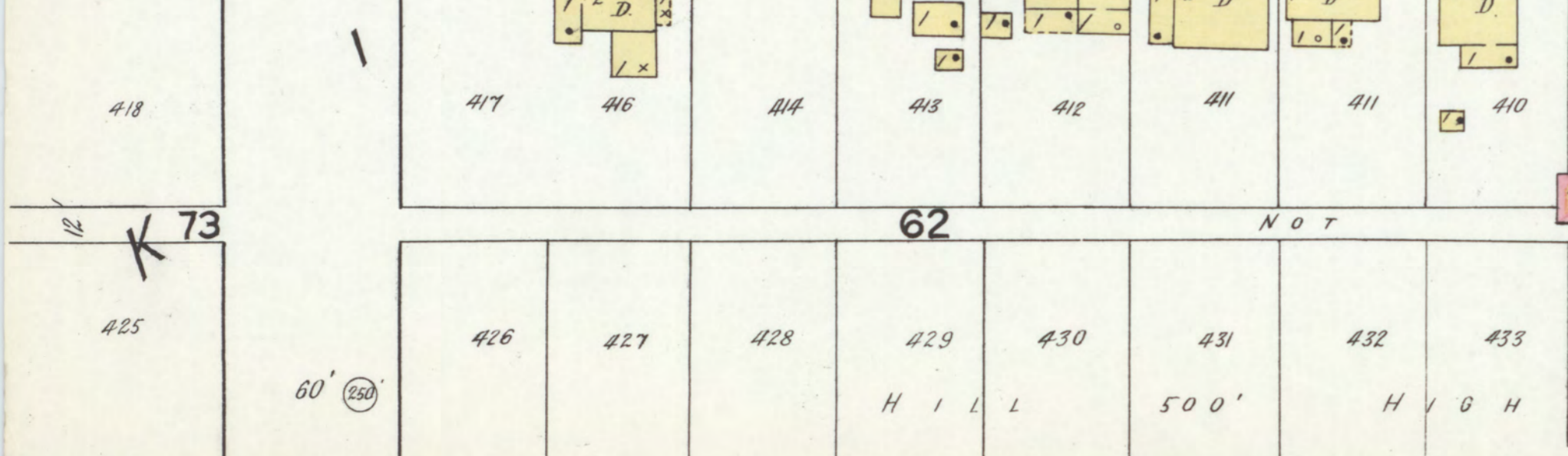
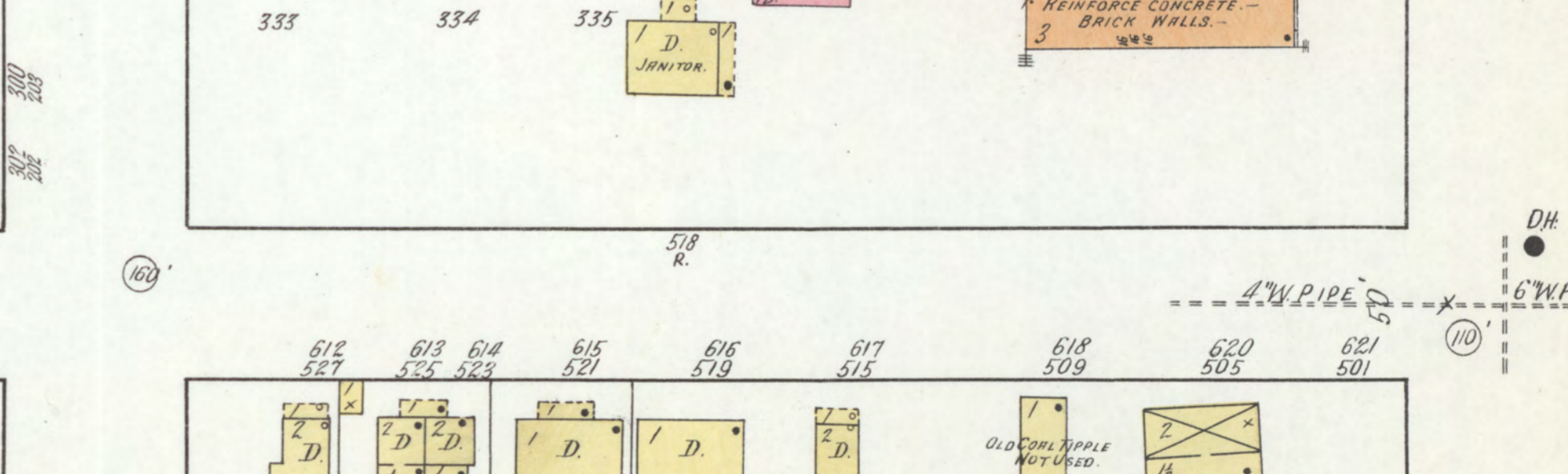
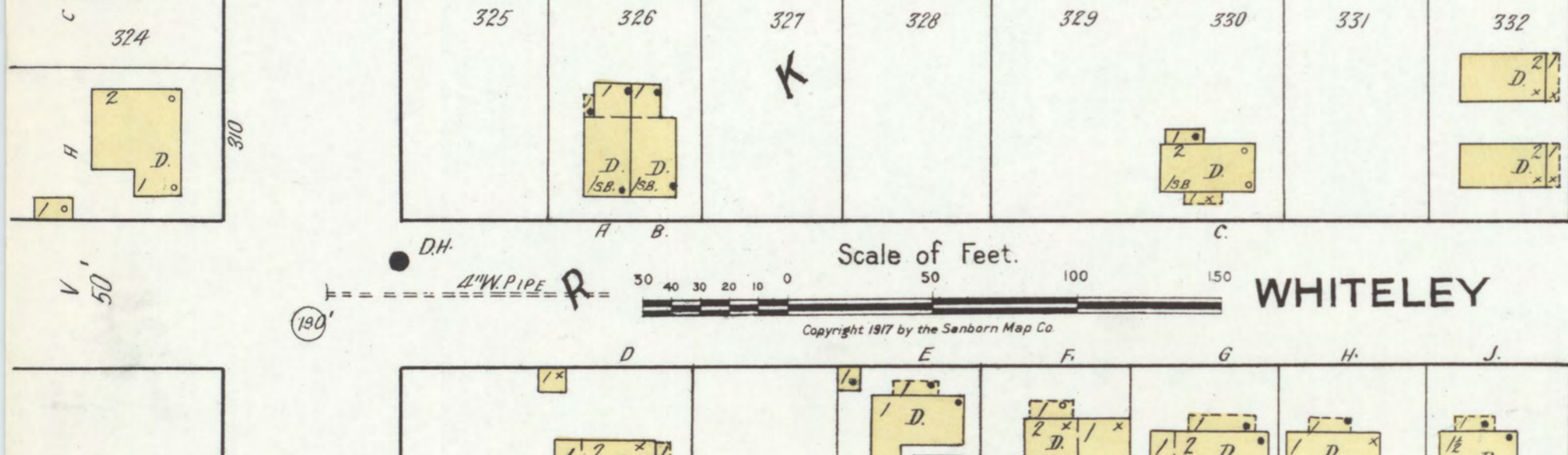
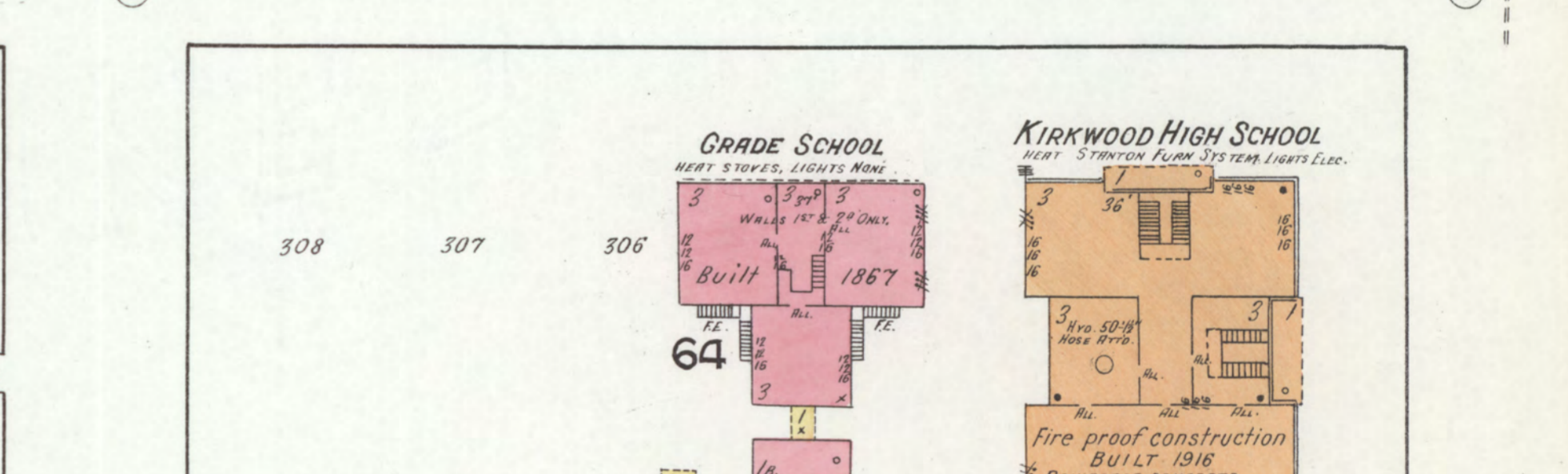
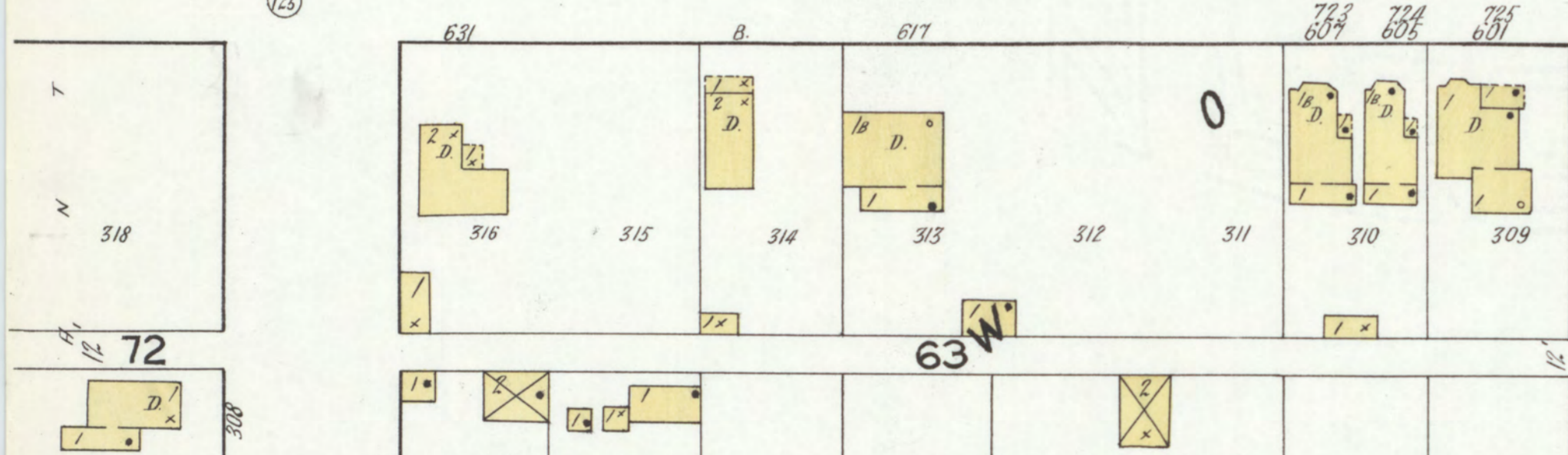
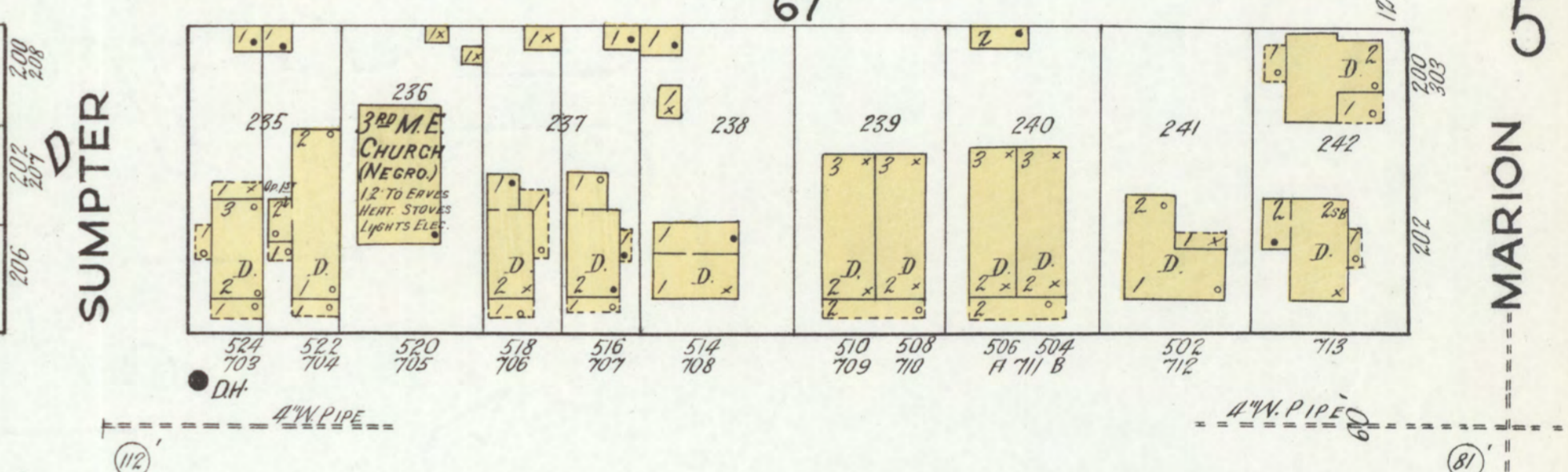
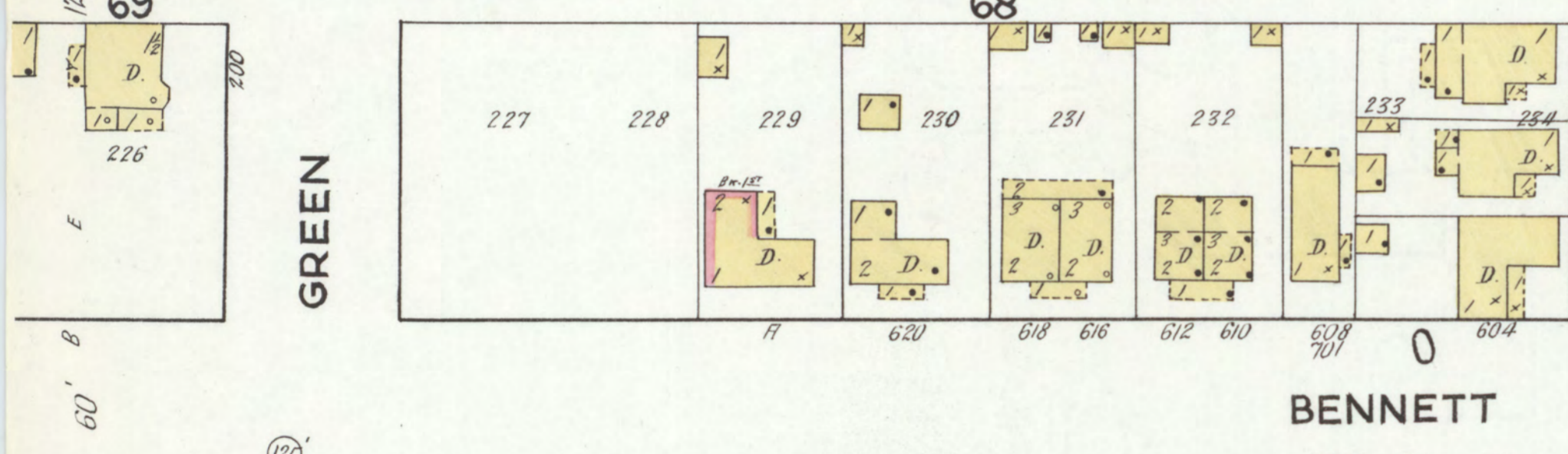
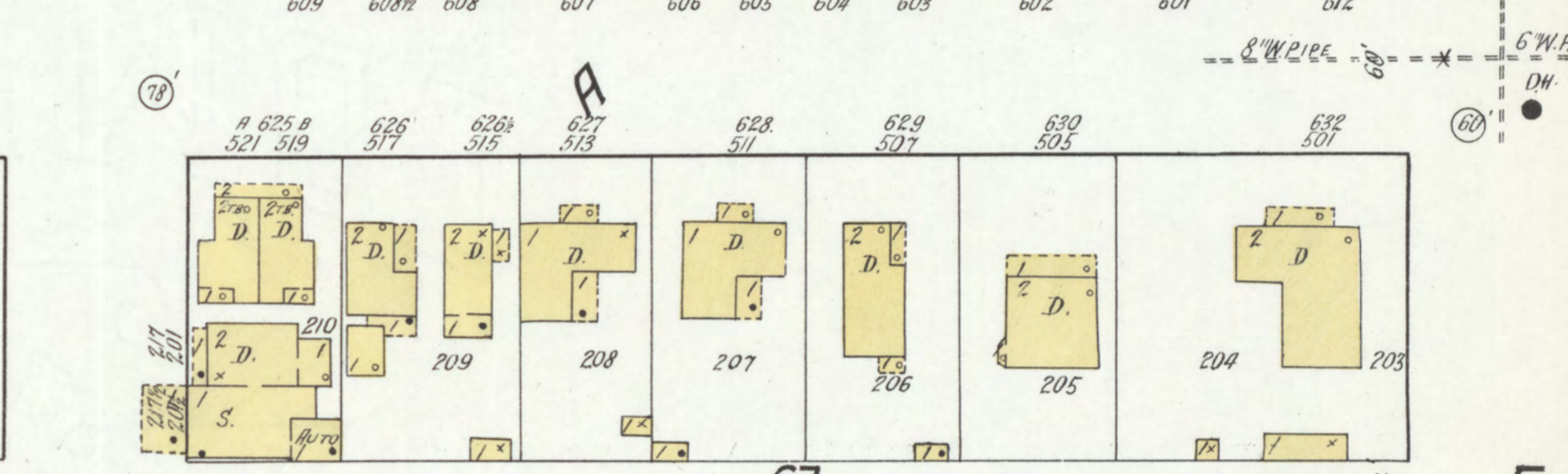
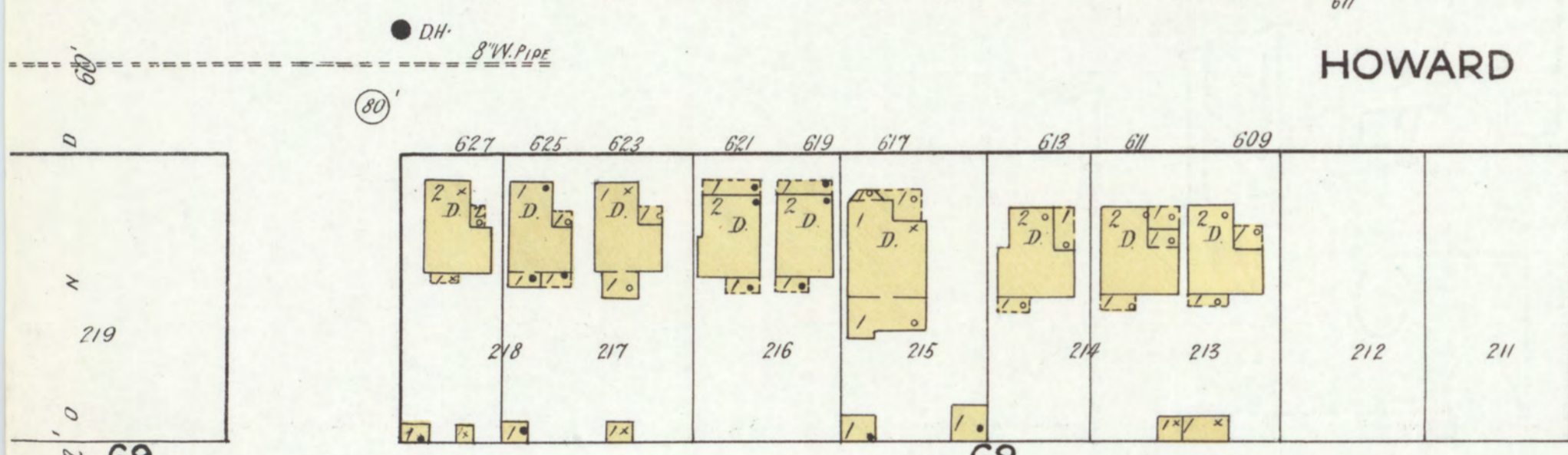
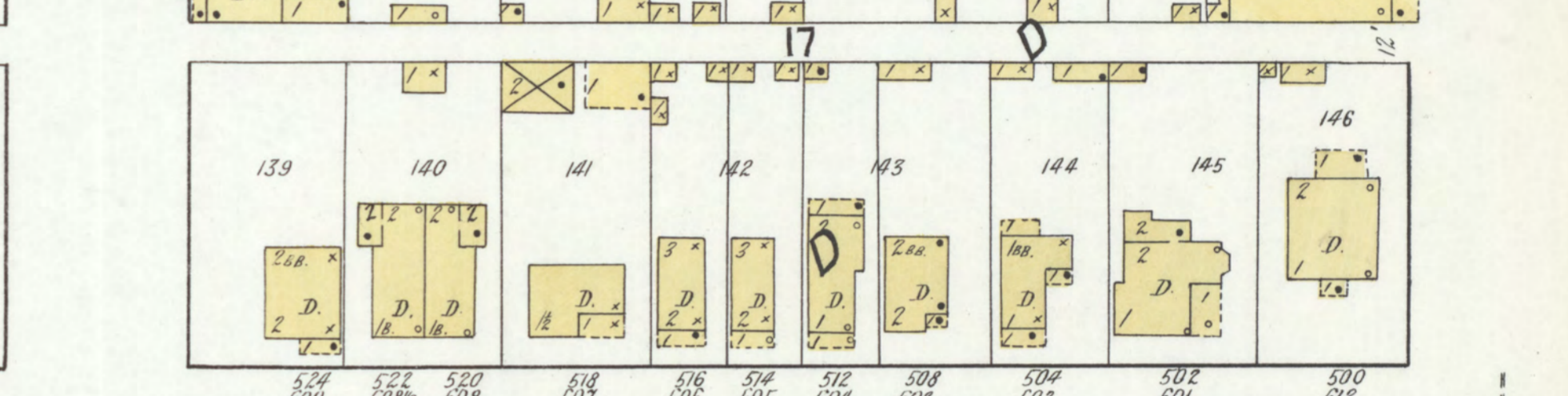
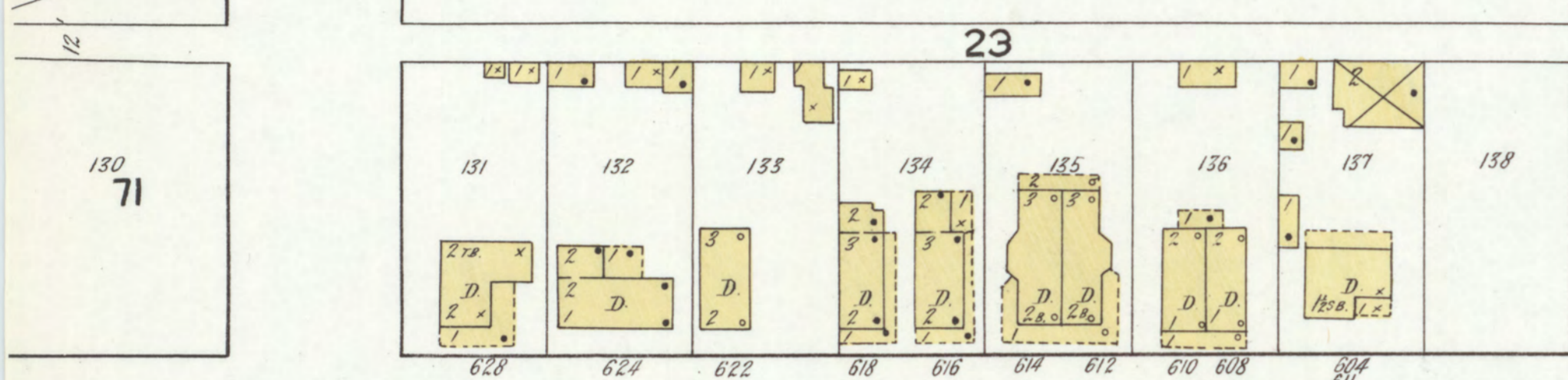
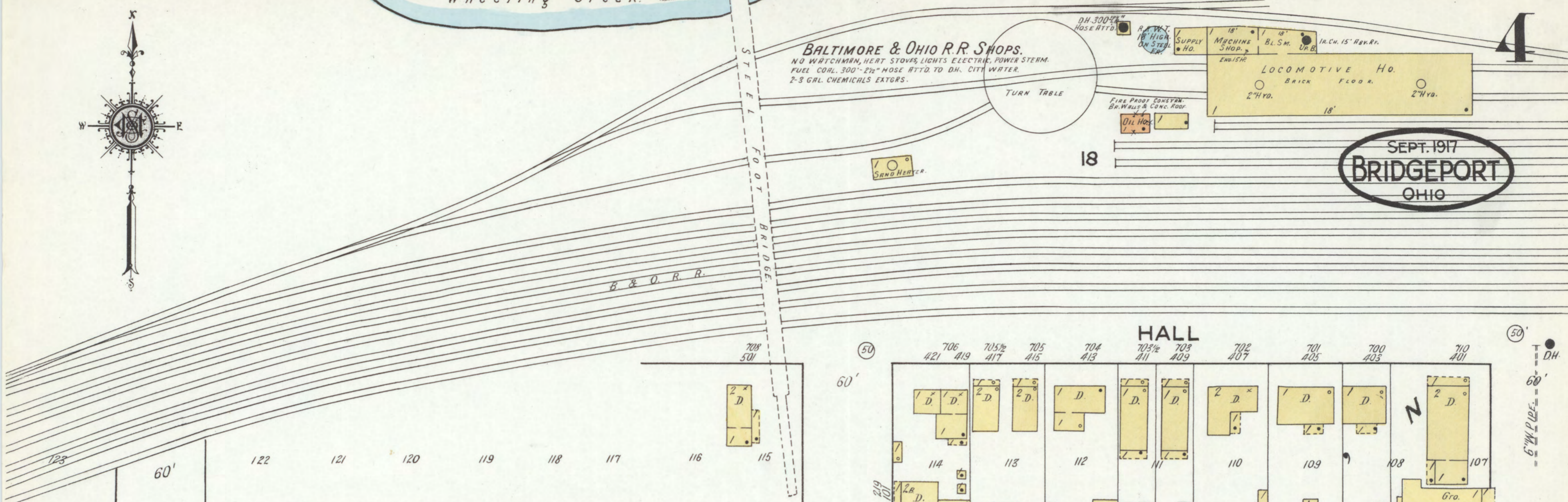
BALTIMORE & OHIO R.R. SHOPS.
NO WATCHMAN, HEAT STOVES, LIGHTS, ELECTRIC, POWER STEAM.
FUEL COAL. 300' 2 1/2" HOSE ATT'D TO DH. CITY WATER.
2-3 GAL. CHEMICALS EXT'RS.

TURN TABLE

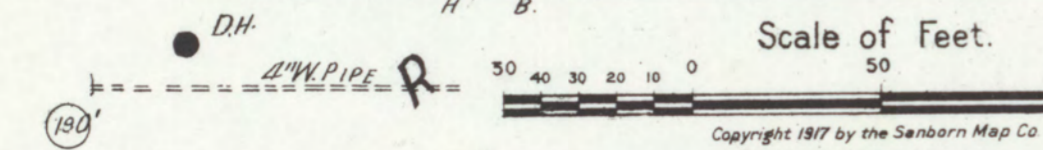
LOCOMOTIVE HO.
BRICK FLOOR.
2" HYD.

SEPT. 1917
BRIDGEPORT
OHIO

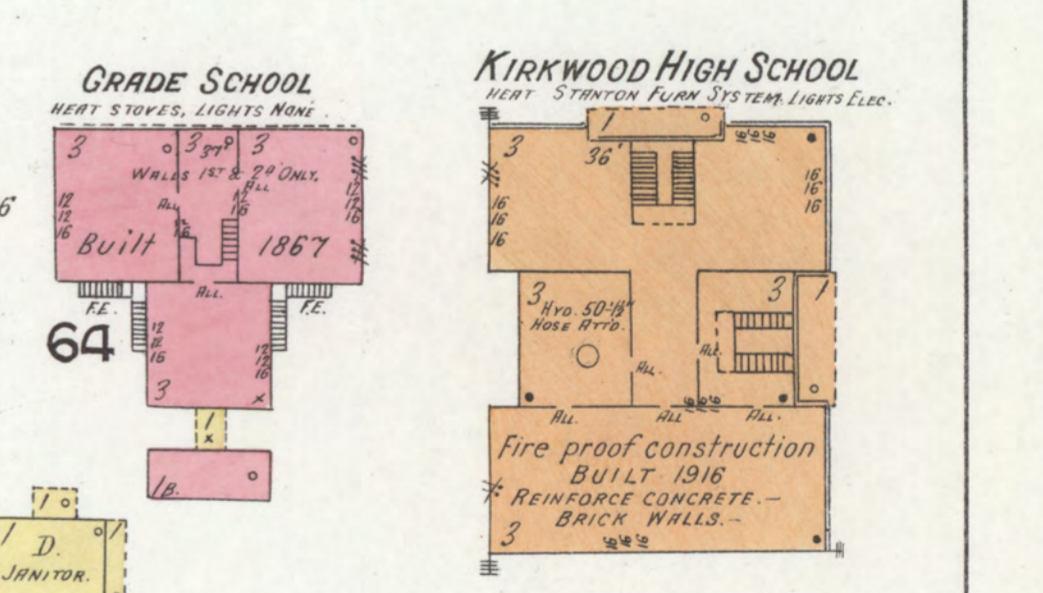
STEEL FOOT BRIDGE
B & O R.R.



HOWARD
GREEN
SUMPTER
BENNETT
WHITELEY
MARION
BEYOND



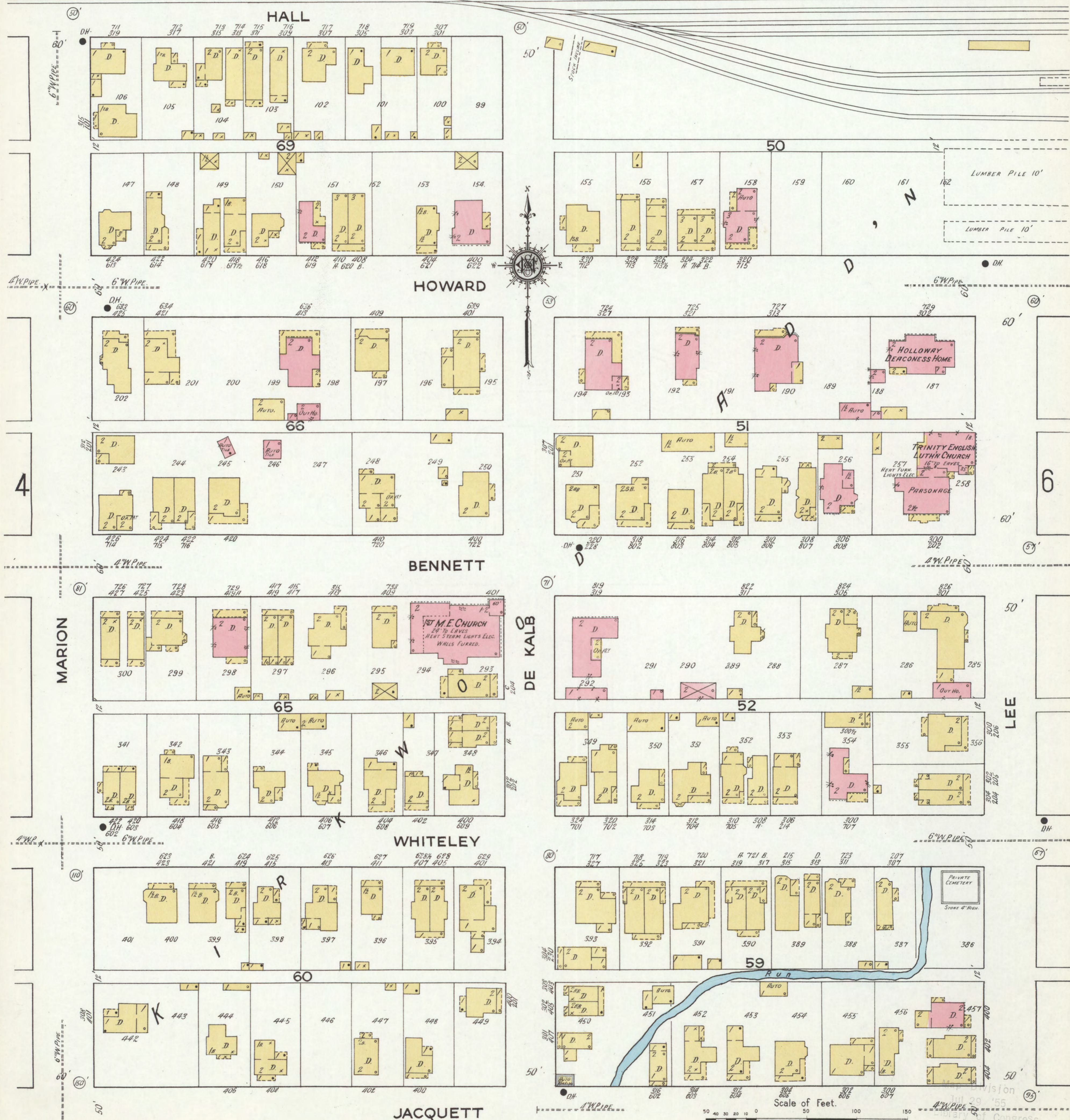
Copyright 1917 by the Sanborn Map Co.



Map Division
Jul 29 1917
Library of Congress

BALTIMORE & OHIO R. R. YARDS

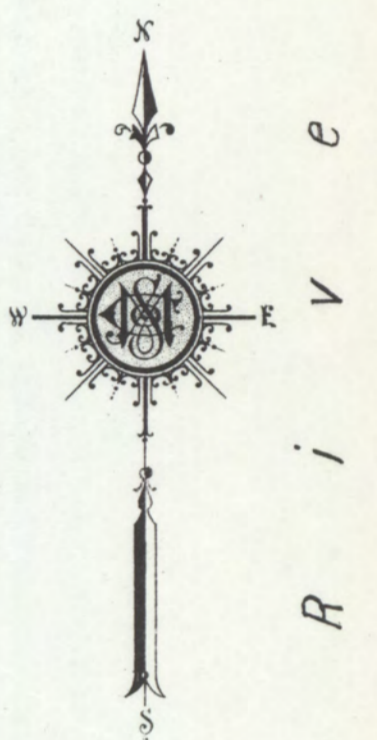
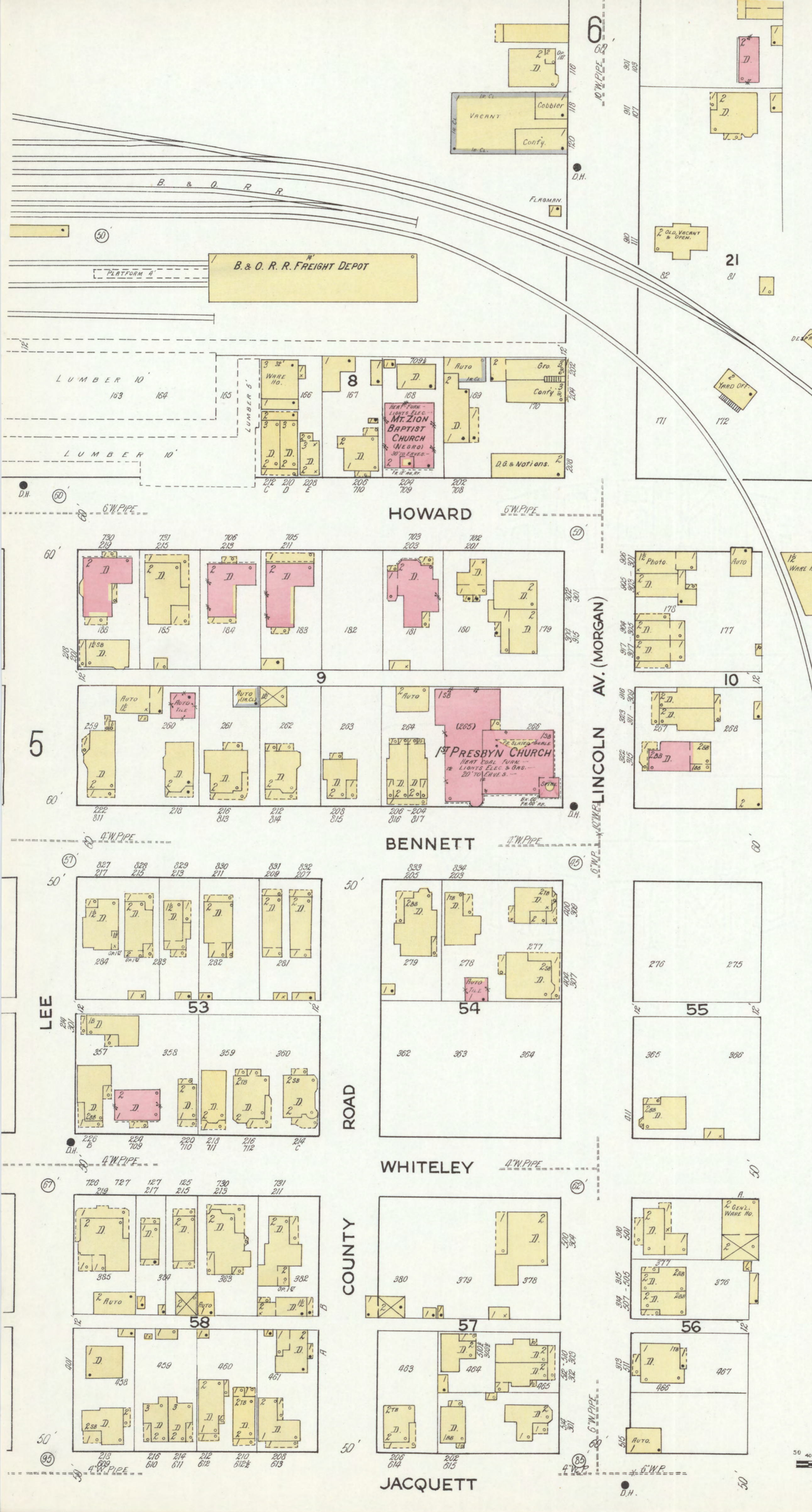
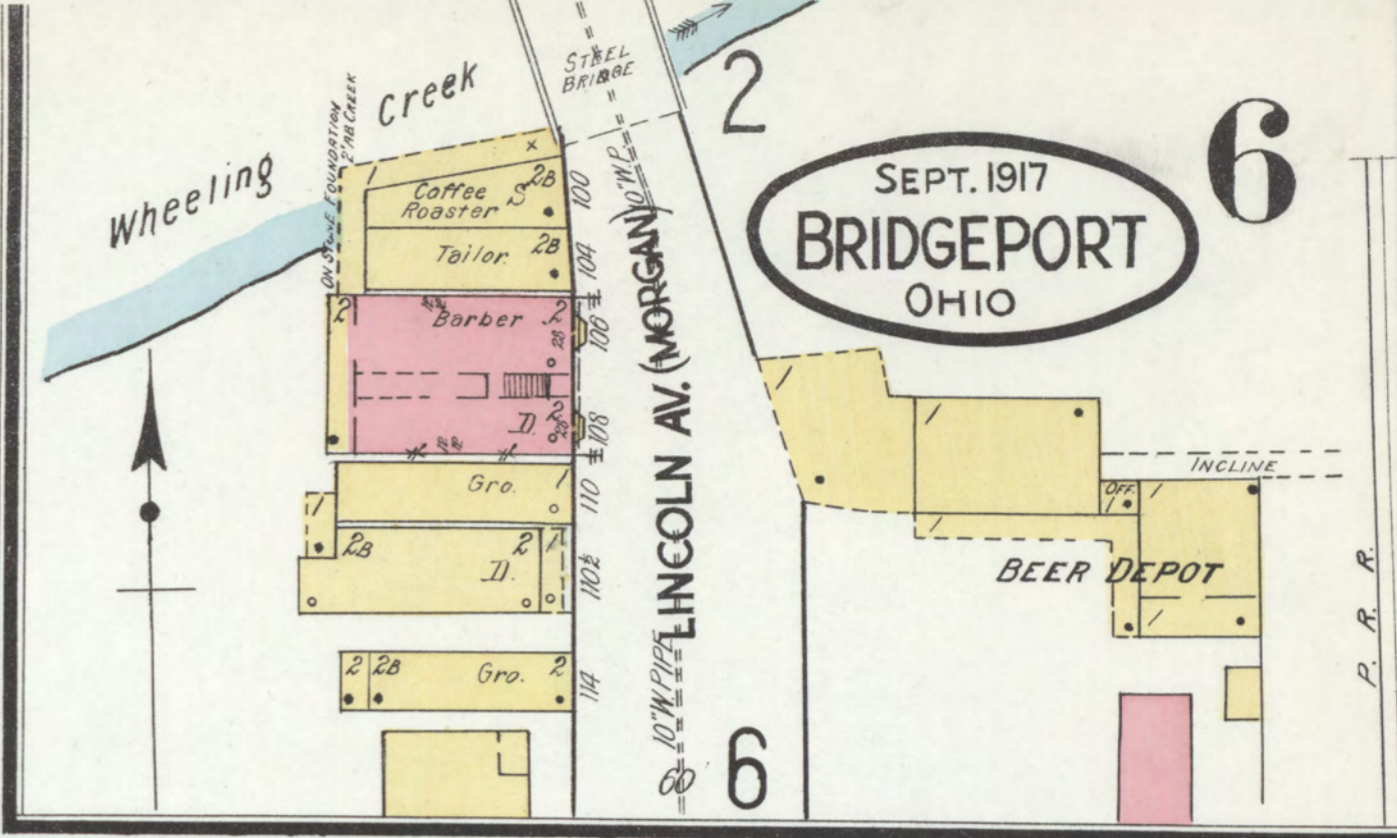
MAIN TRACK



Scale of Feet.

Copyright 1917 by the Sanborn Map Co.

Library of Congress



BRIDGEPORT
WALL PLASTER CO.
NO WATCHMAN, NO HEAVY
POWER & LIGHTS ELEC.
FUEL COAL.

Scale of Feet.
0 50 100 150

Copyright 1917 by the Sanborn Map Co.

Ohio River

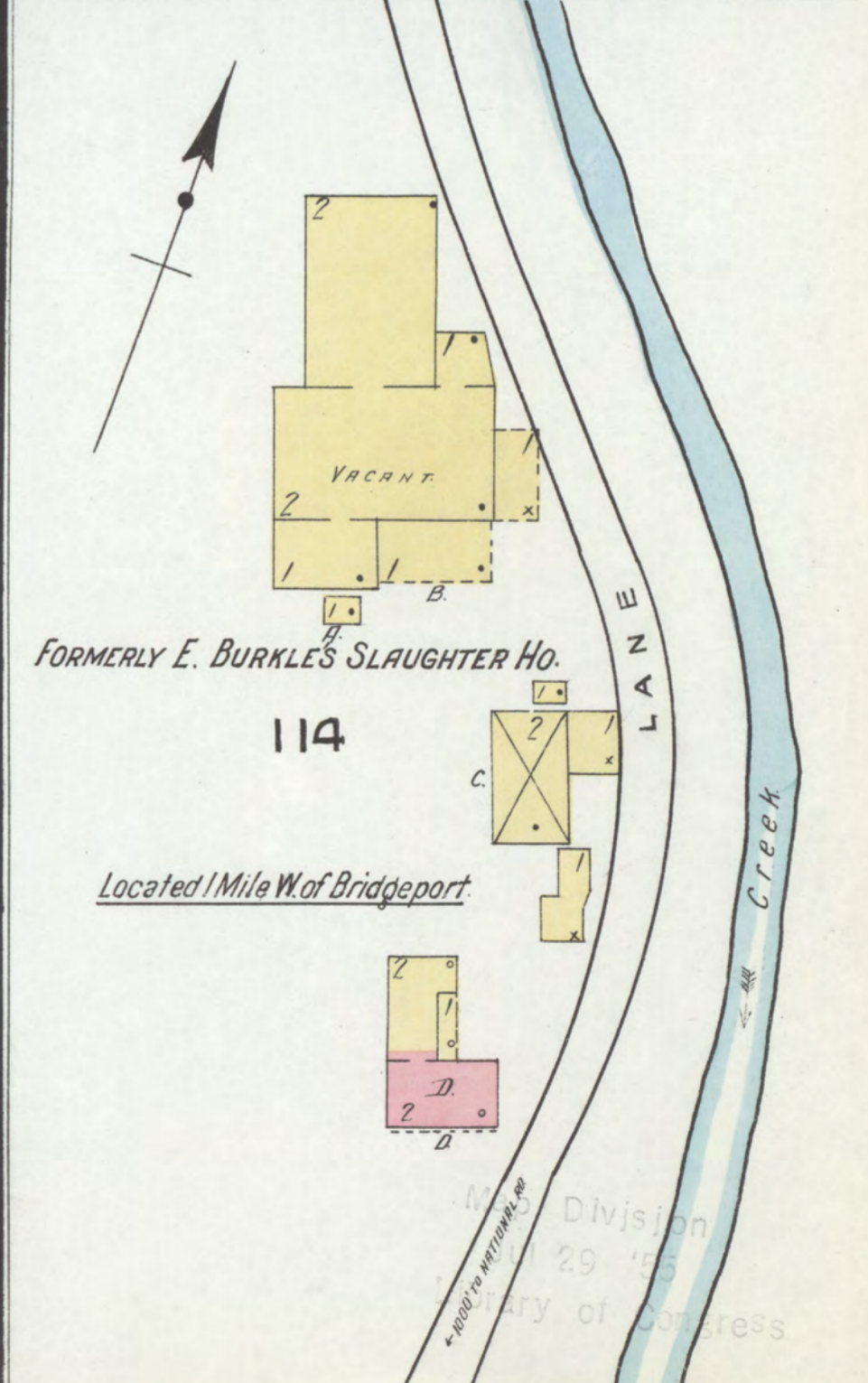
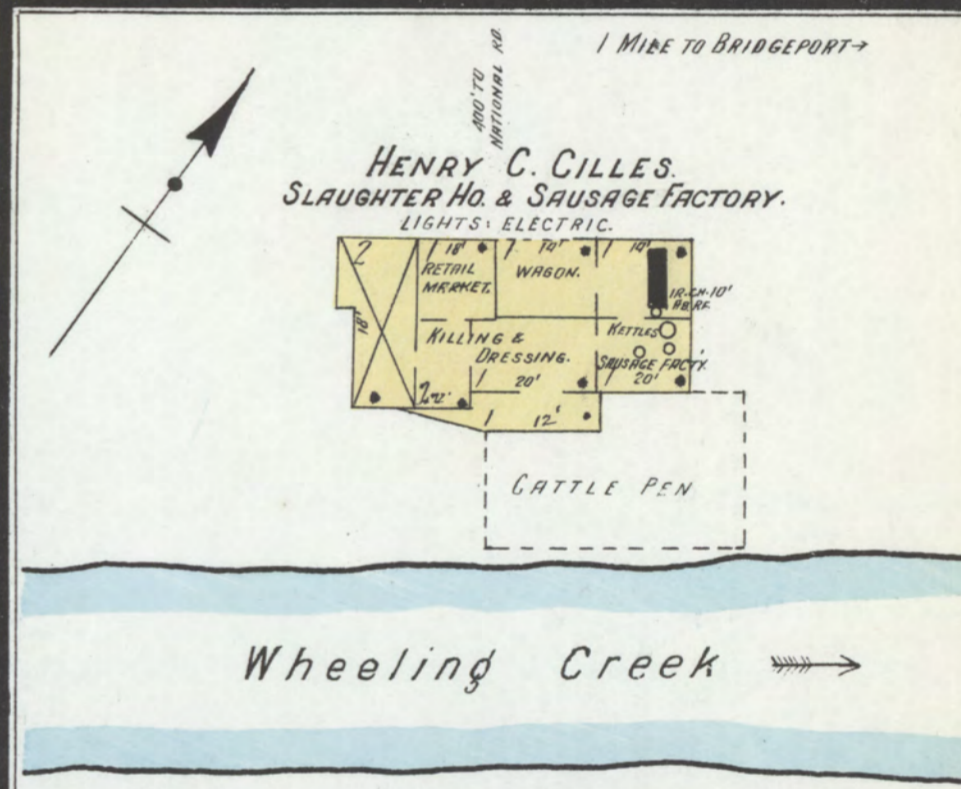
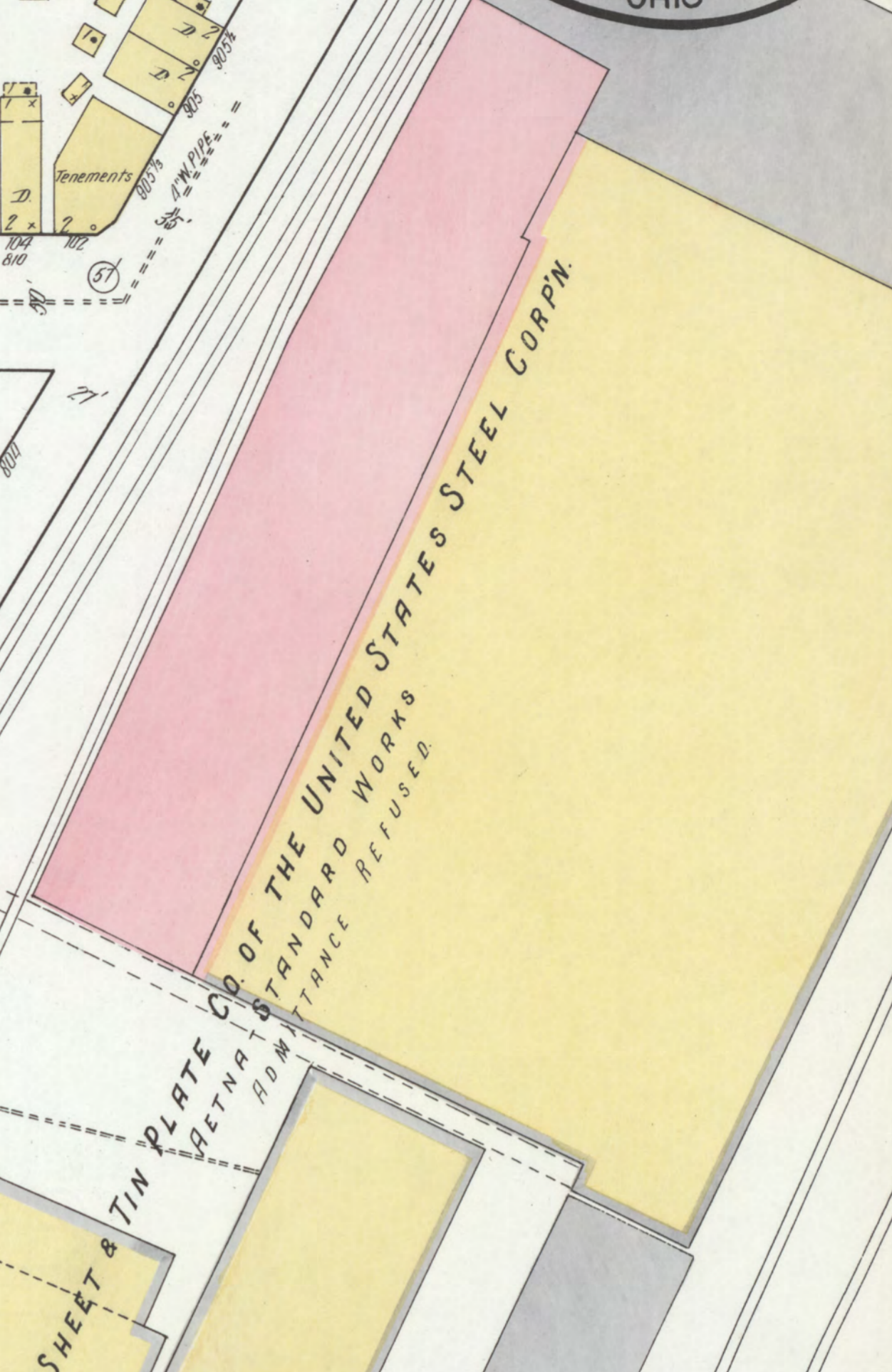
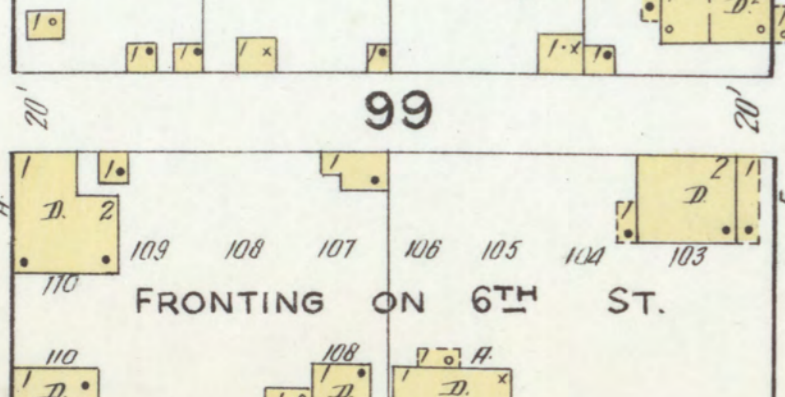
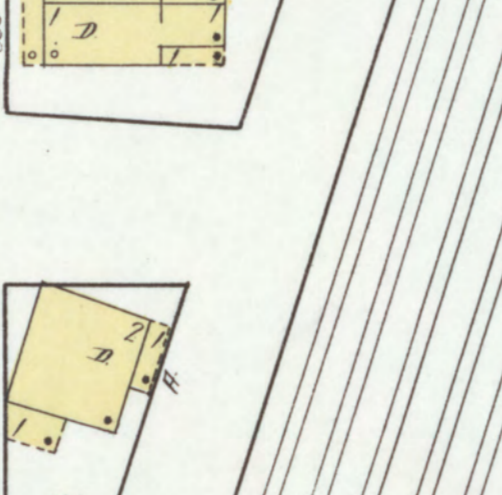
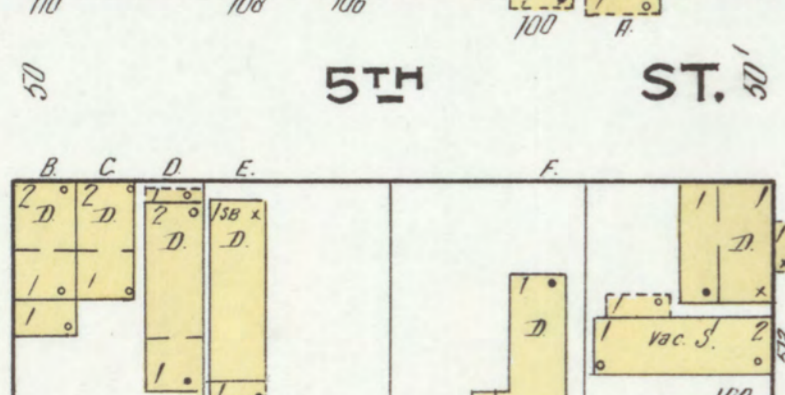
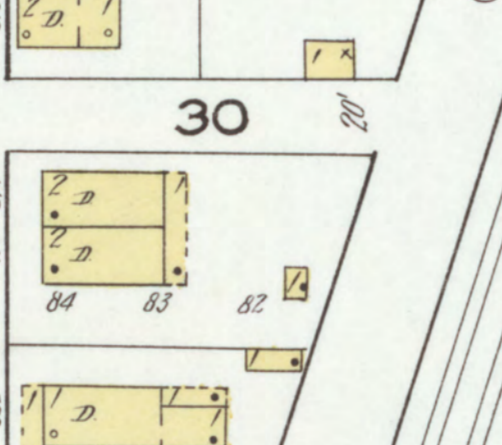
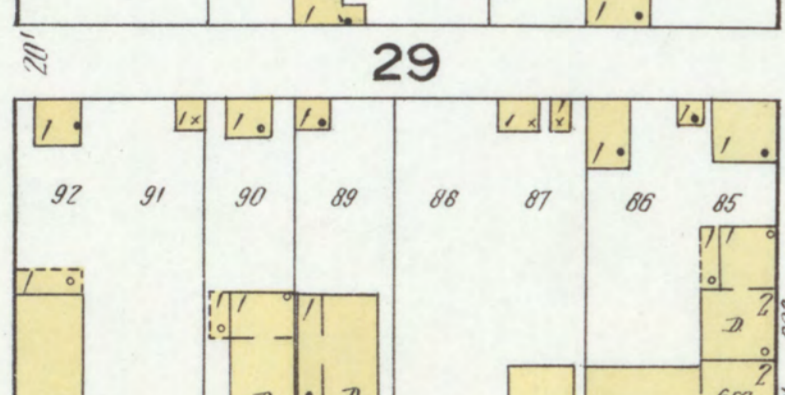
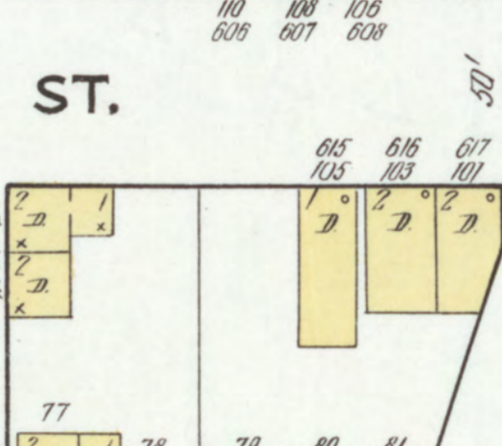
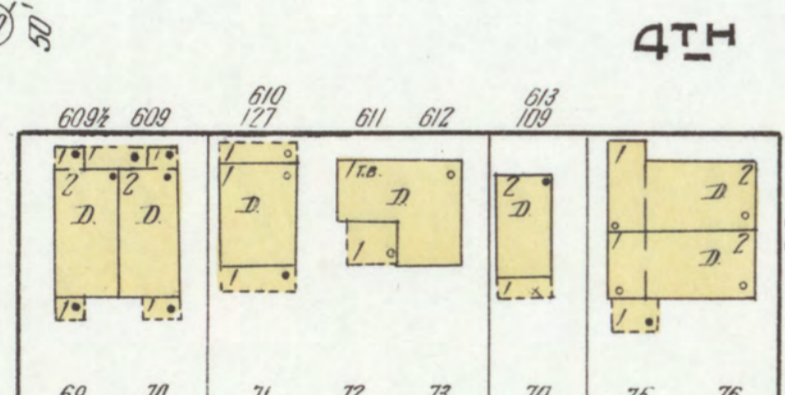
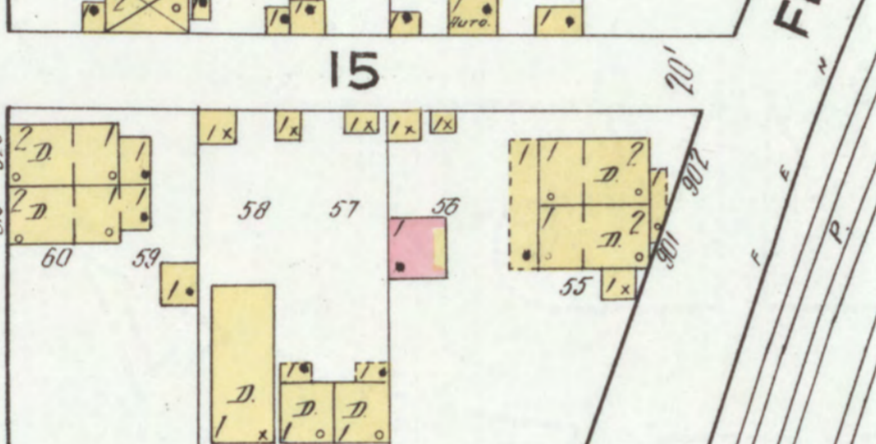
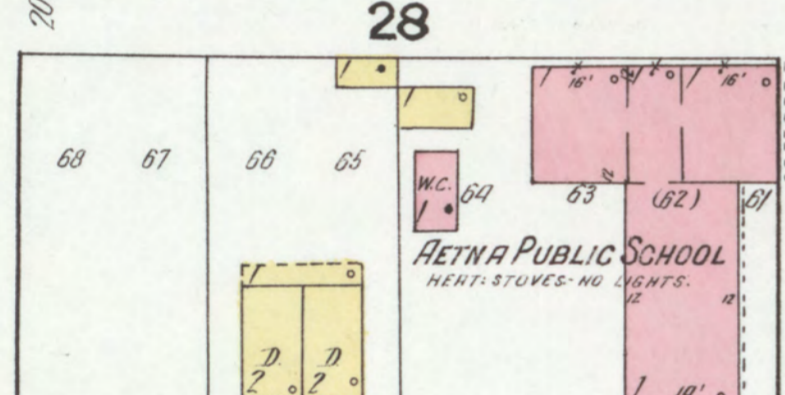
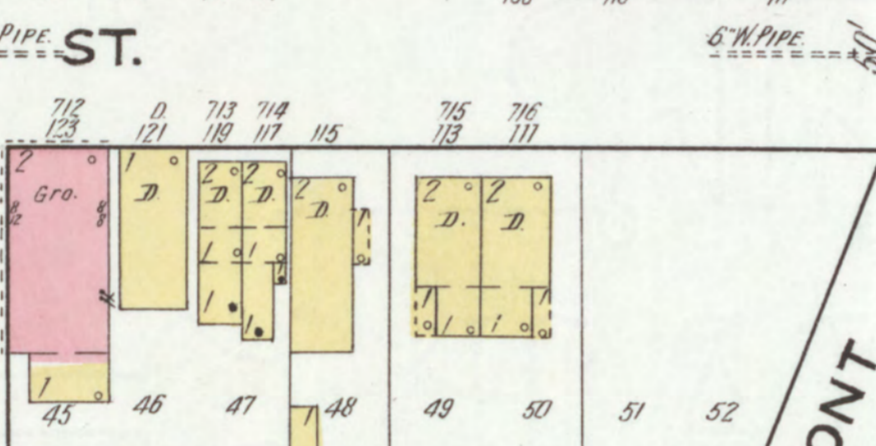
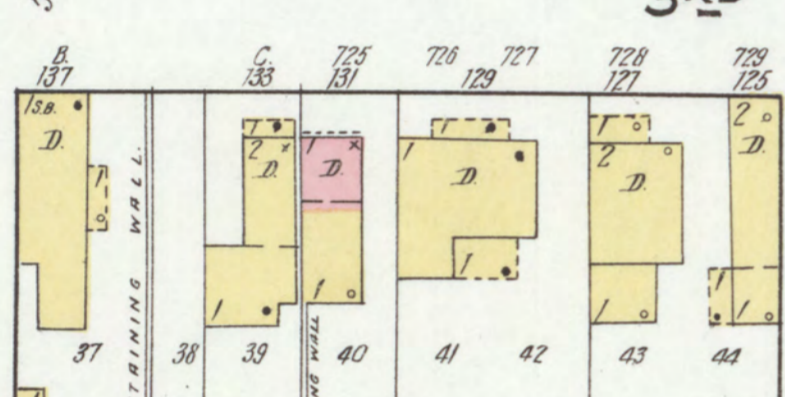
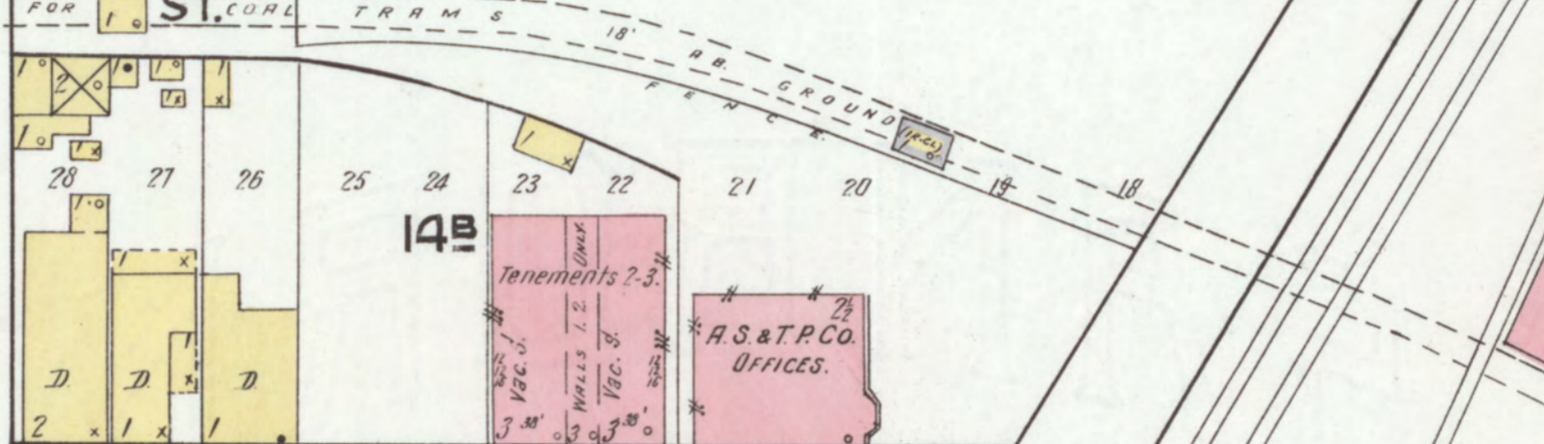
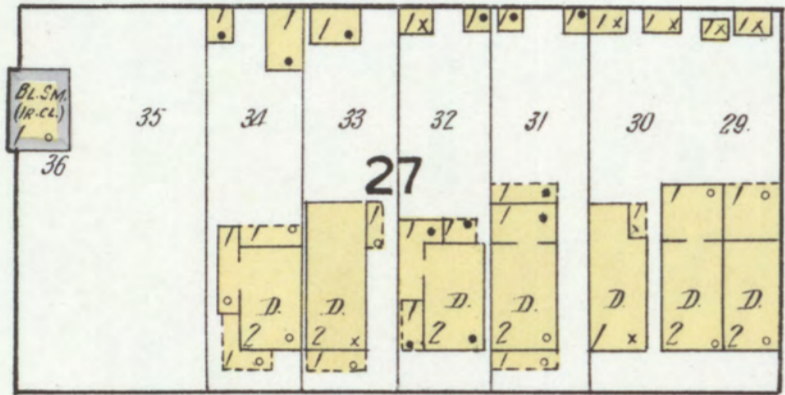
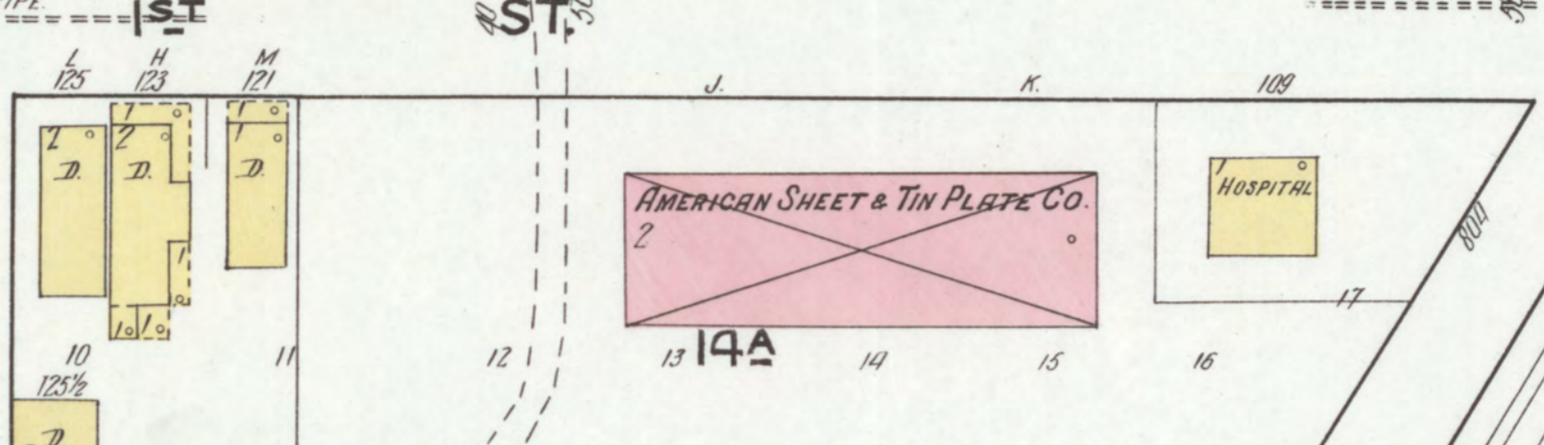
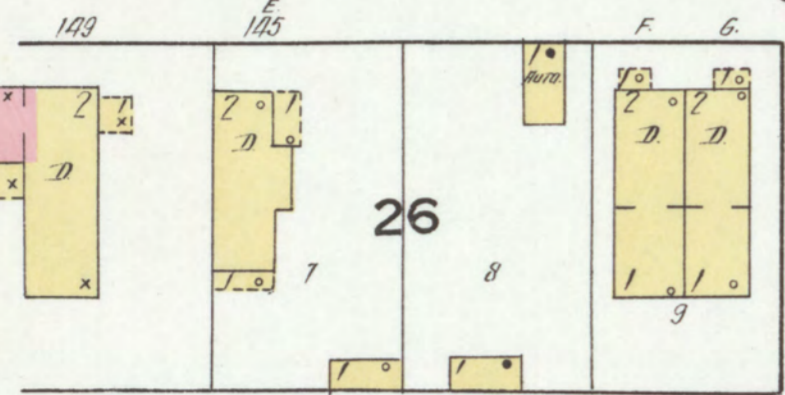
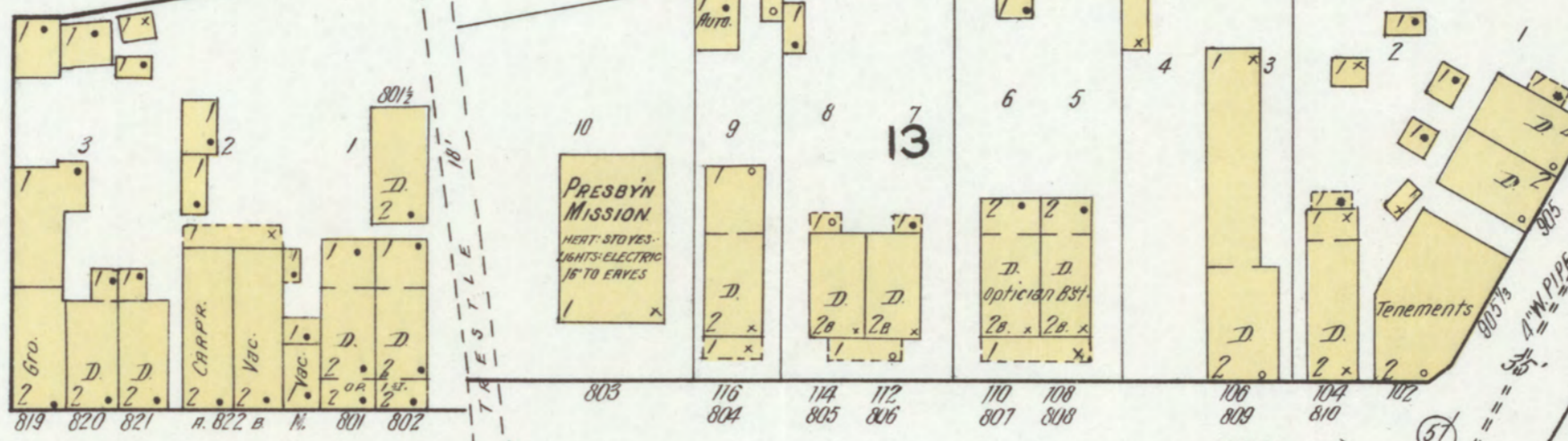
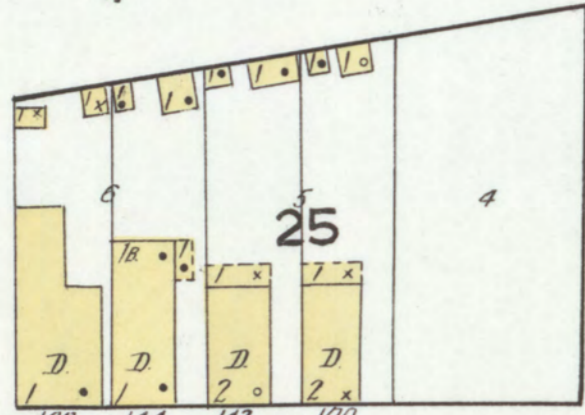
Division
June 23, 1955
of Congress

See Map of Martins Ferry

SEPT. 1917
BRIDGEPORT
OHIO



AETNA



CHASE AV.

LINCOLN AV.

FRONT

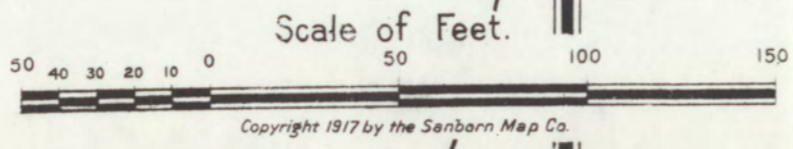
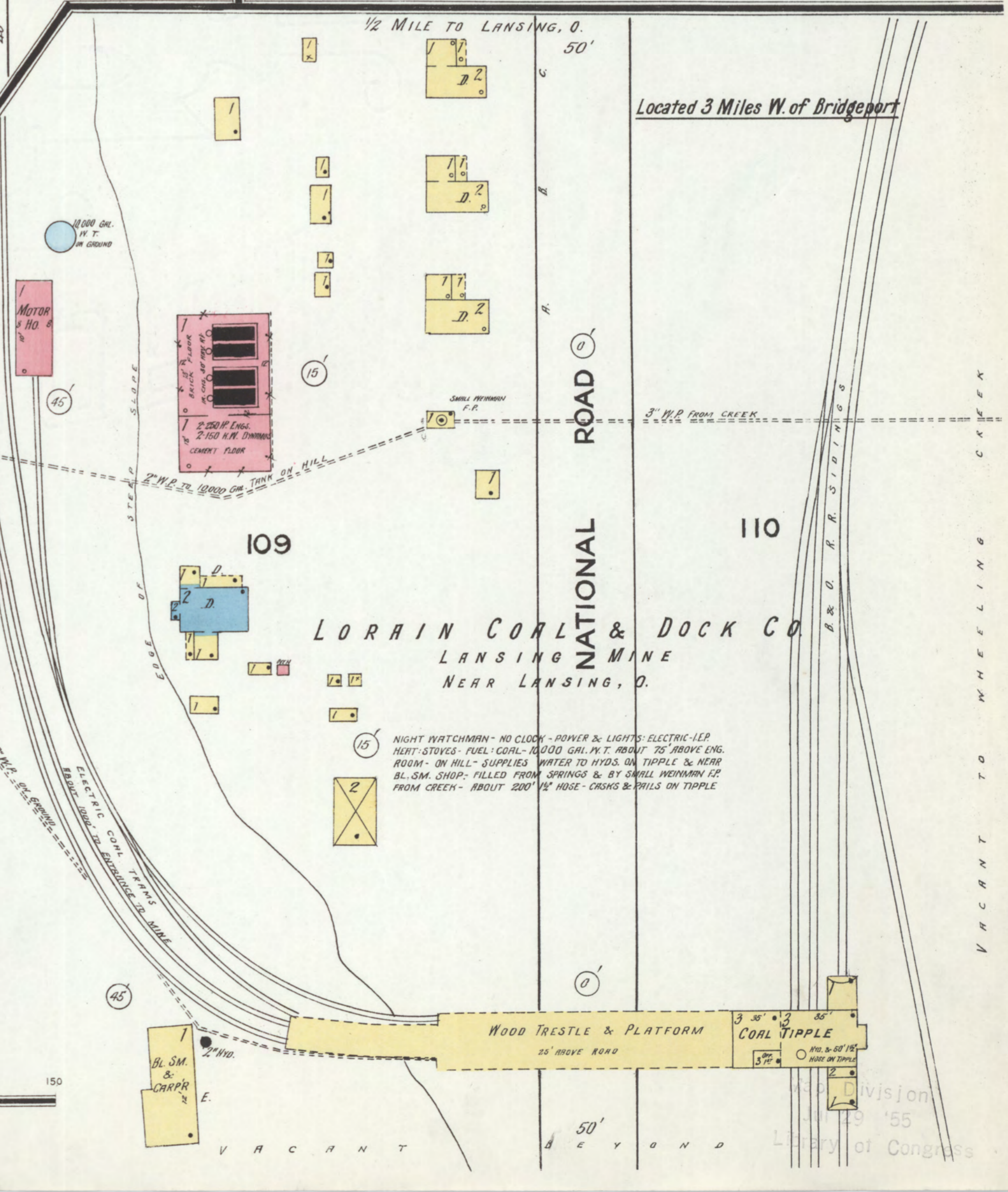
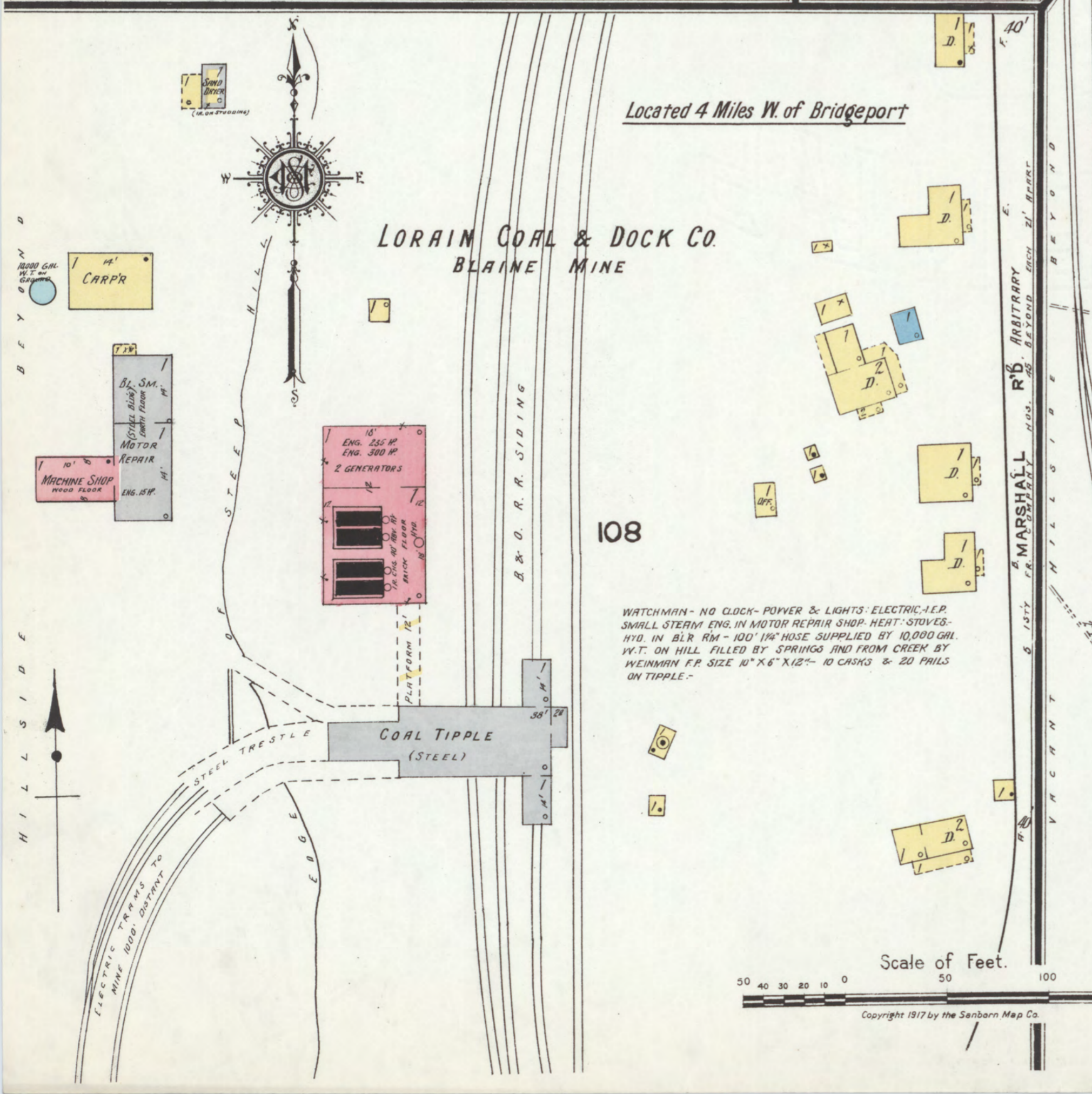
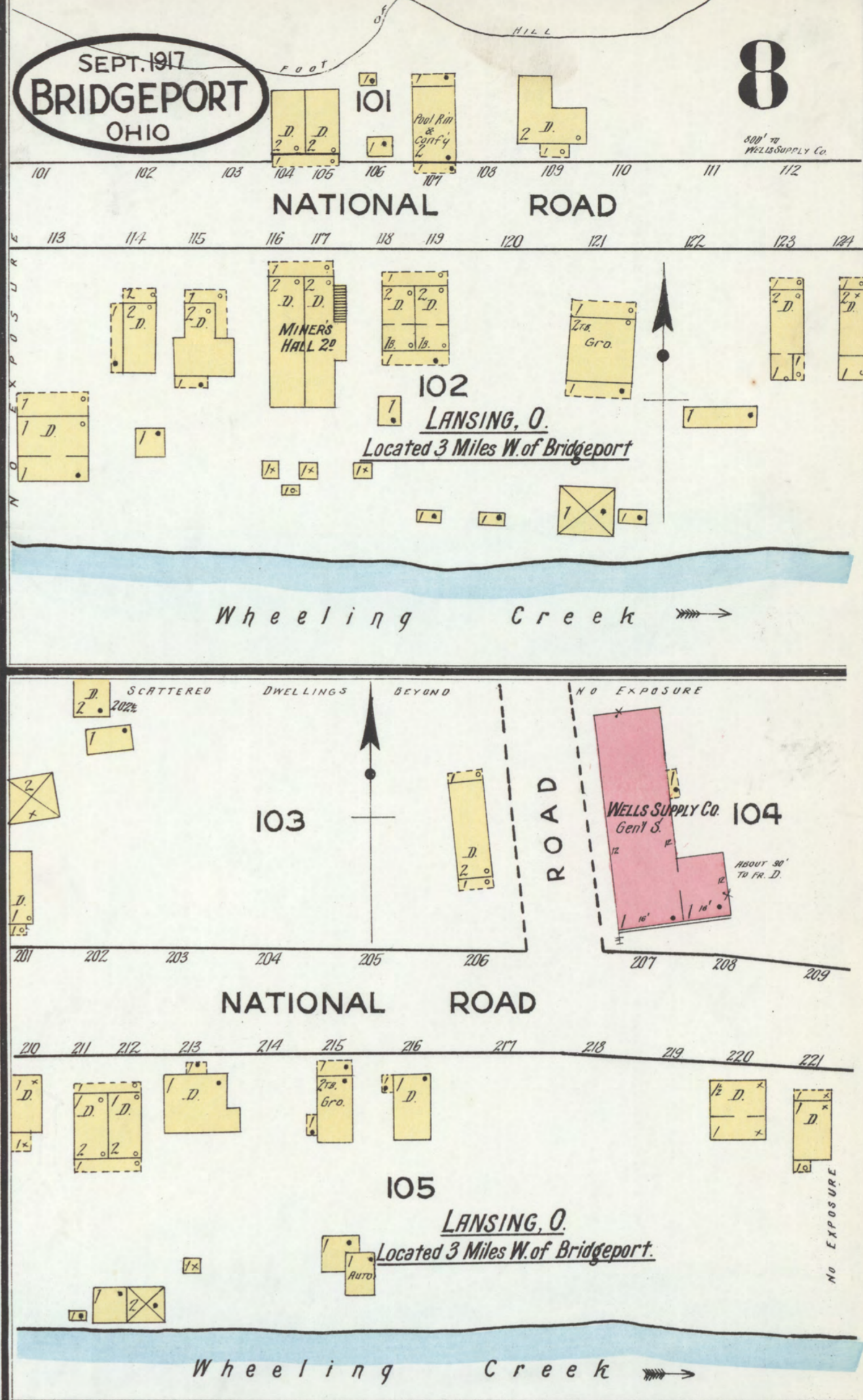
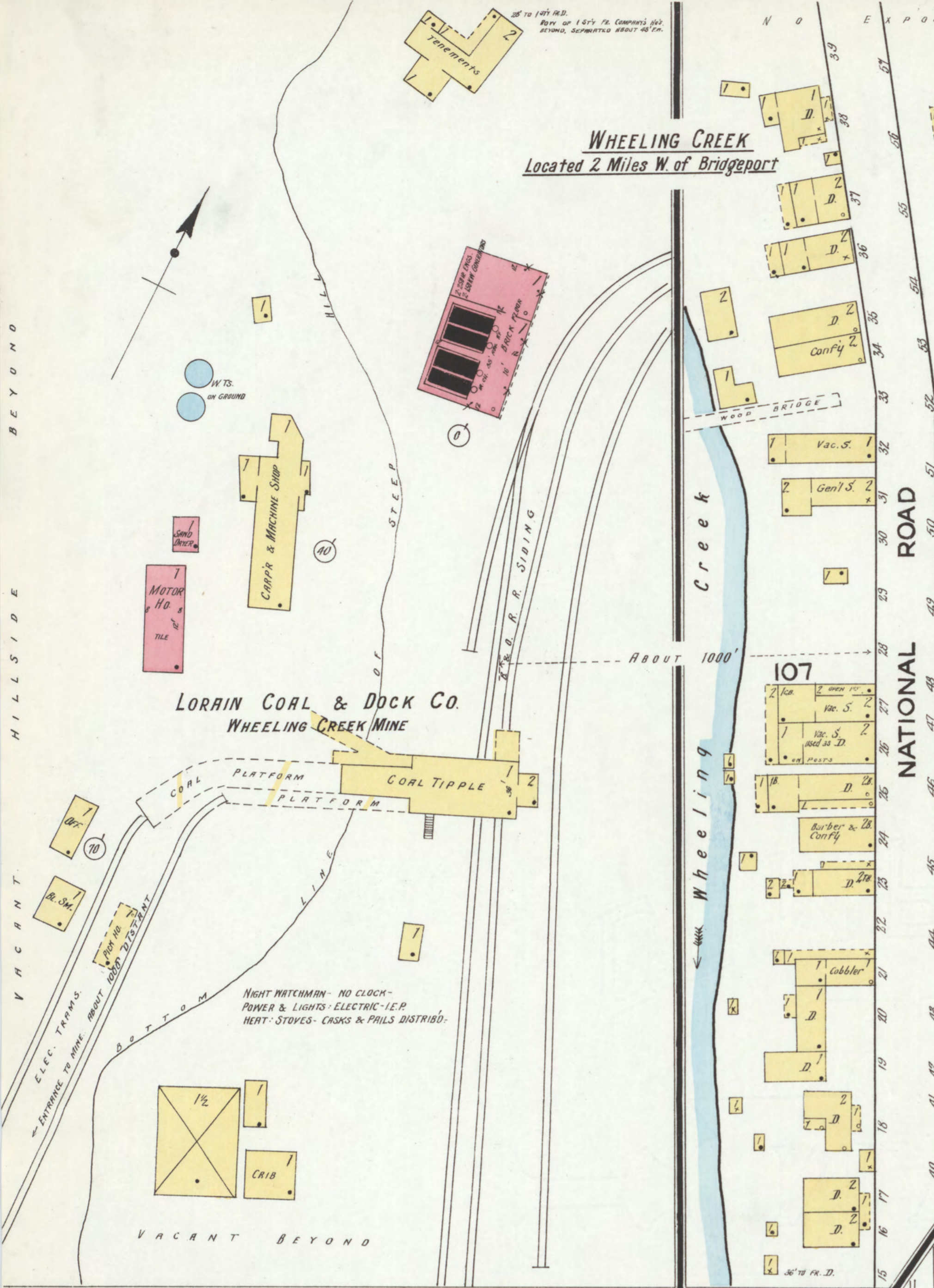
NATIONAL ROAD

VACANT BEYOND

Scale of Feet. 0 50 100 150

Copyright 1917 by the Sanborn Map Co.

WHEELING CREEK
Located 2 Miles W. of Bridgeport



Copyright 1917 by the Sanborn Map Co.