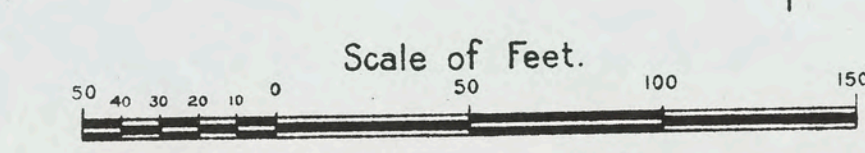
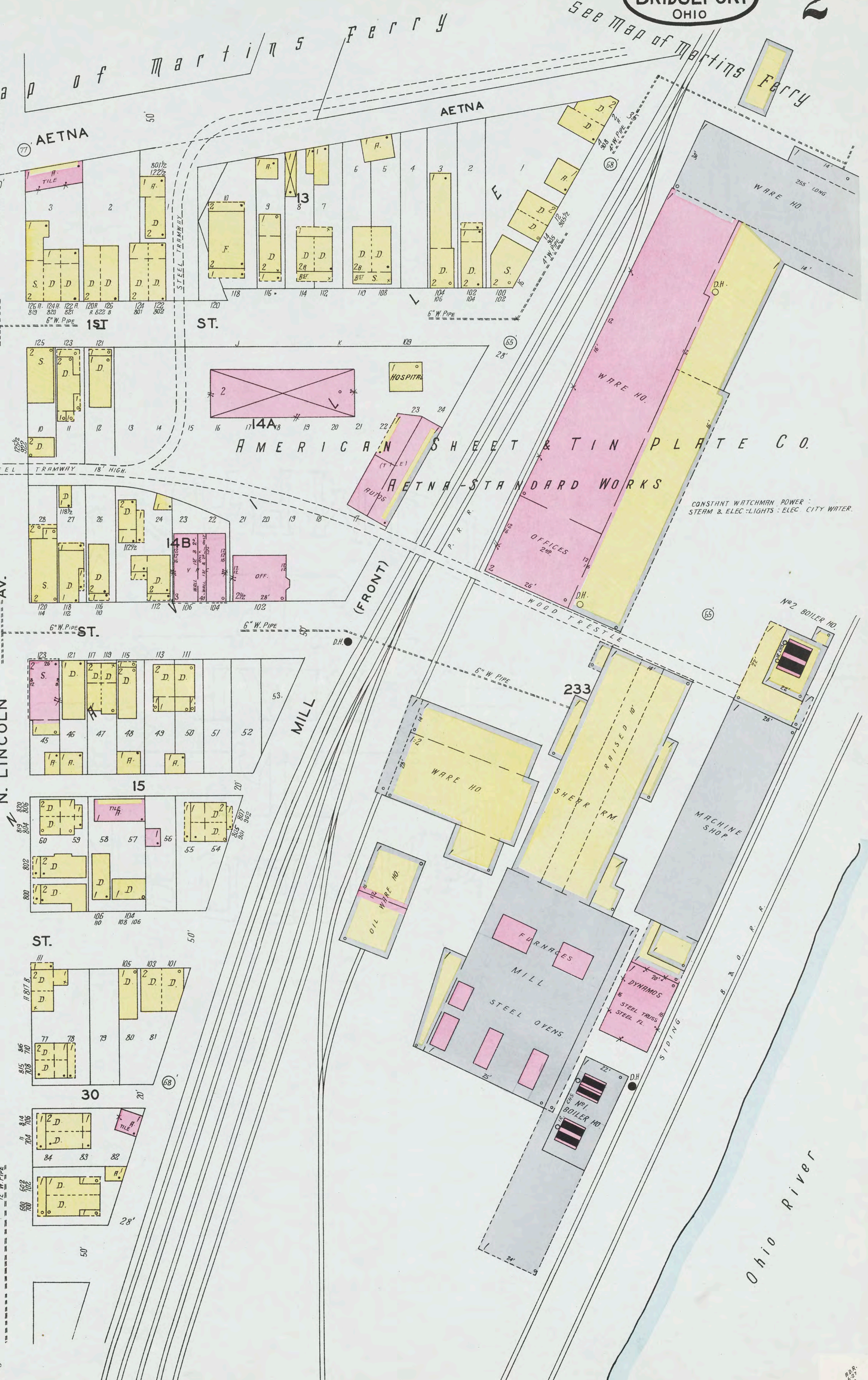
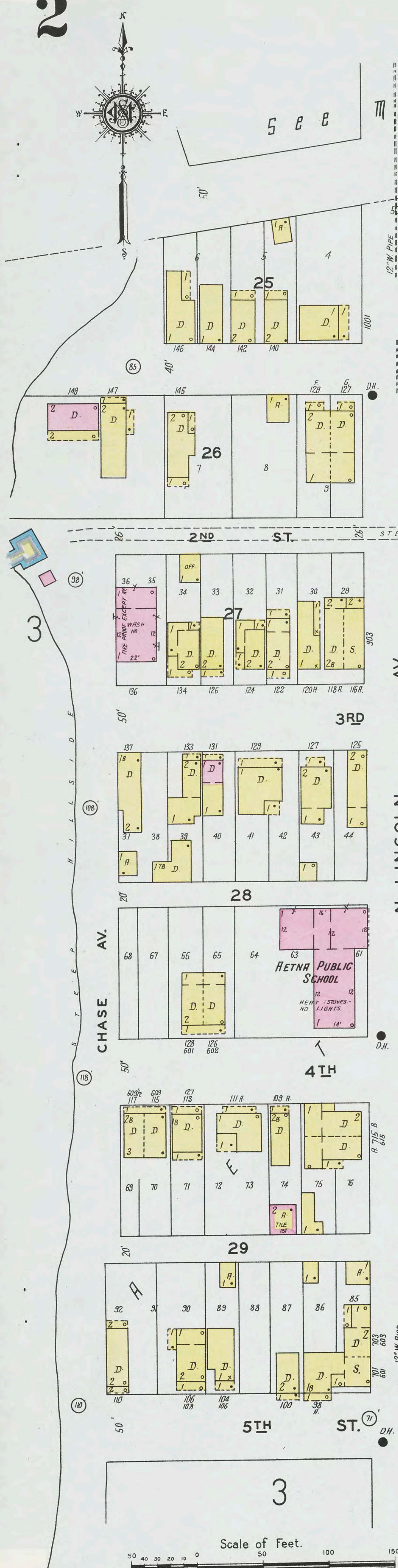
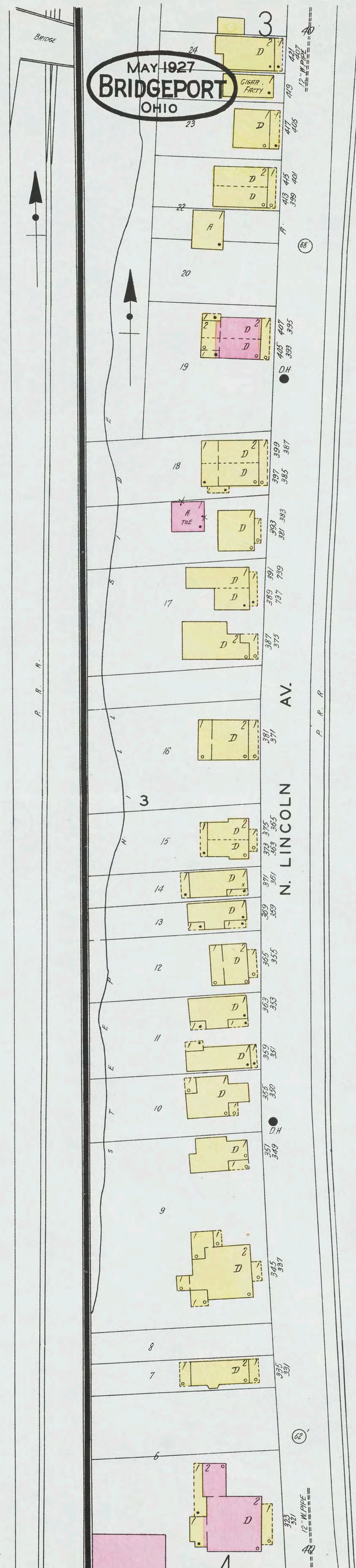
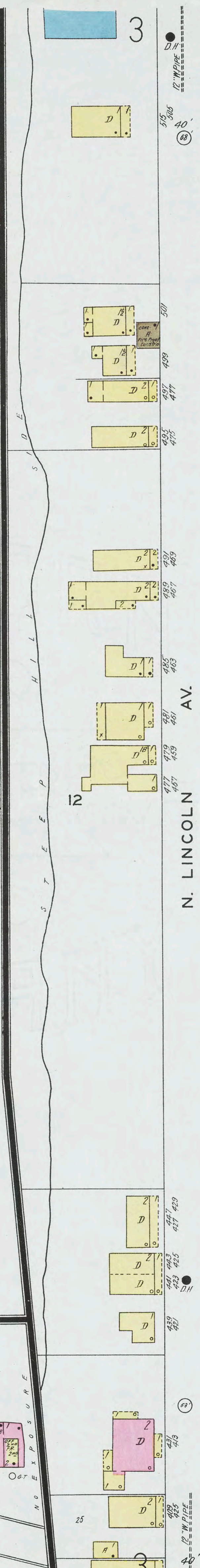
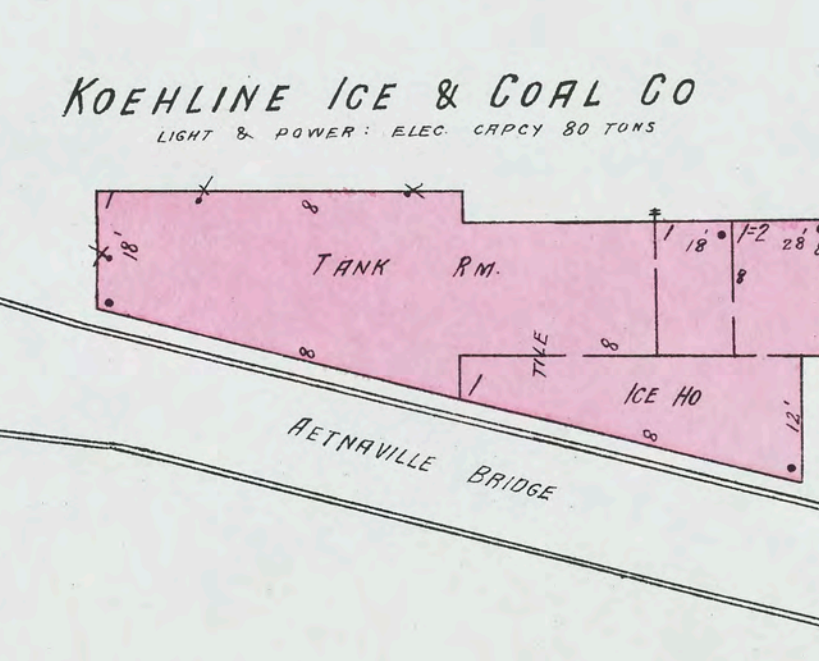
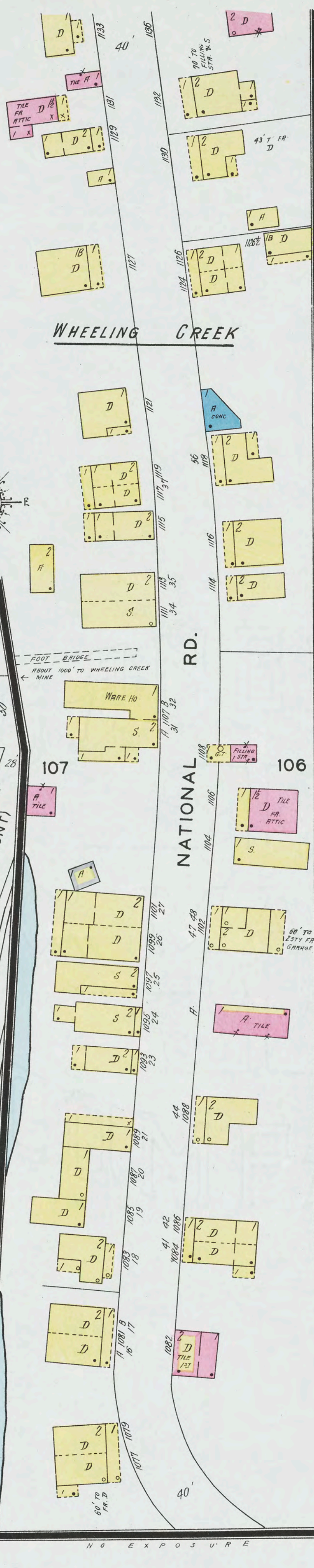
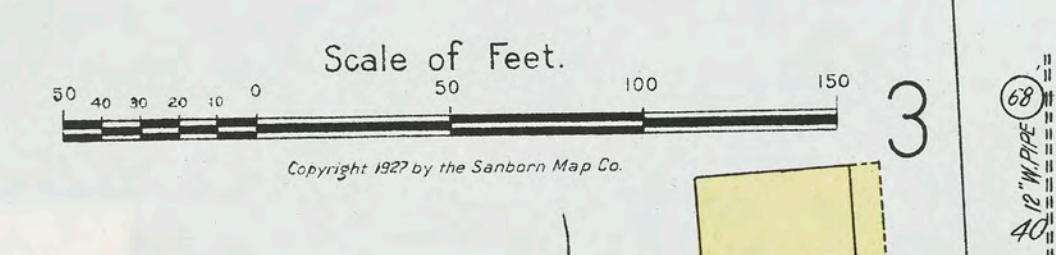
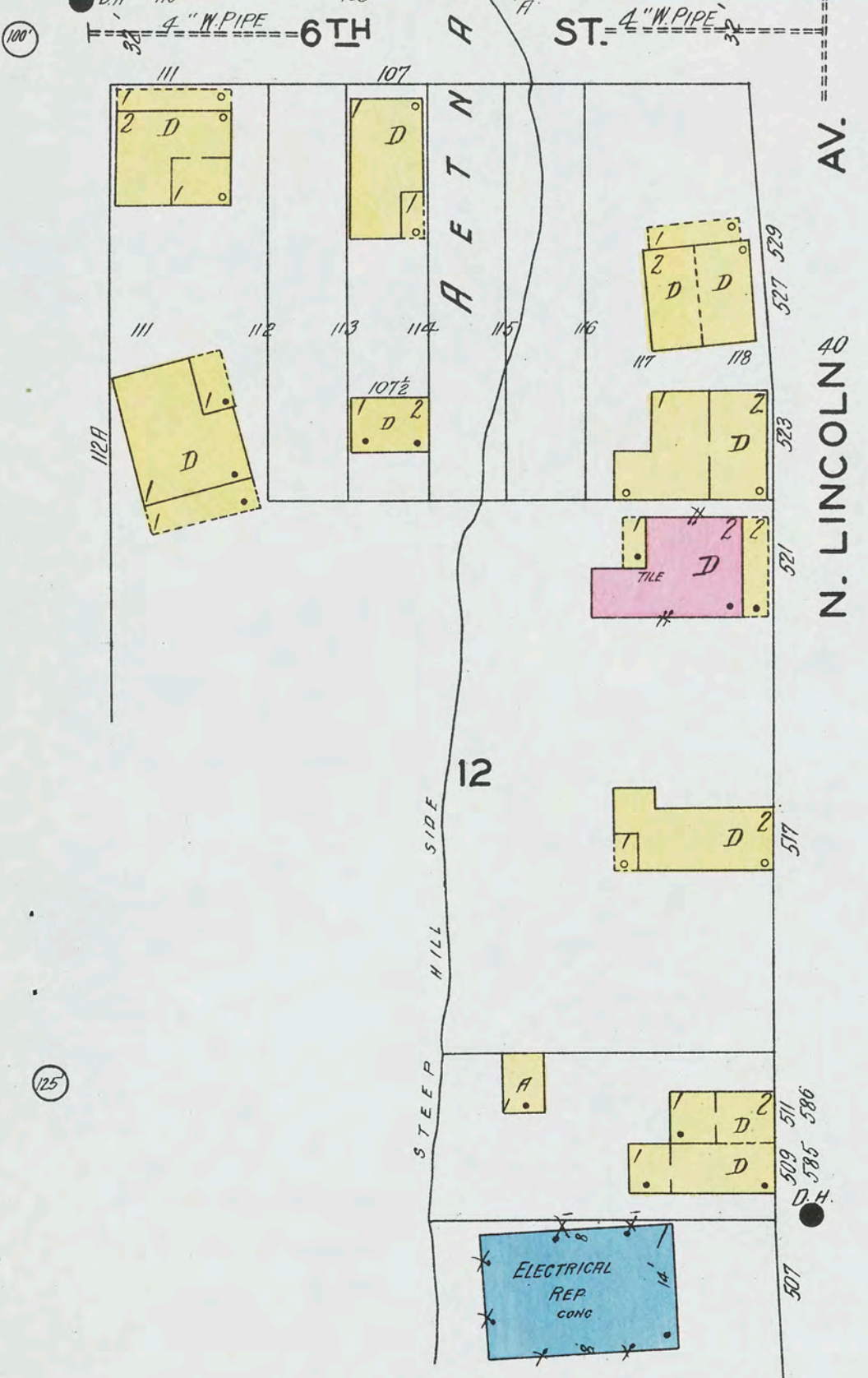
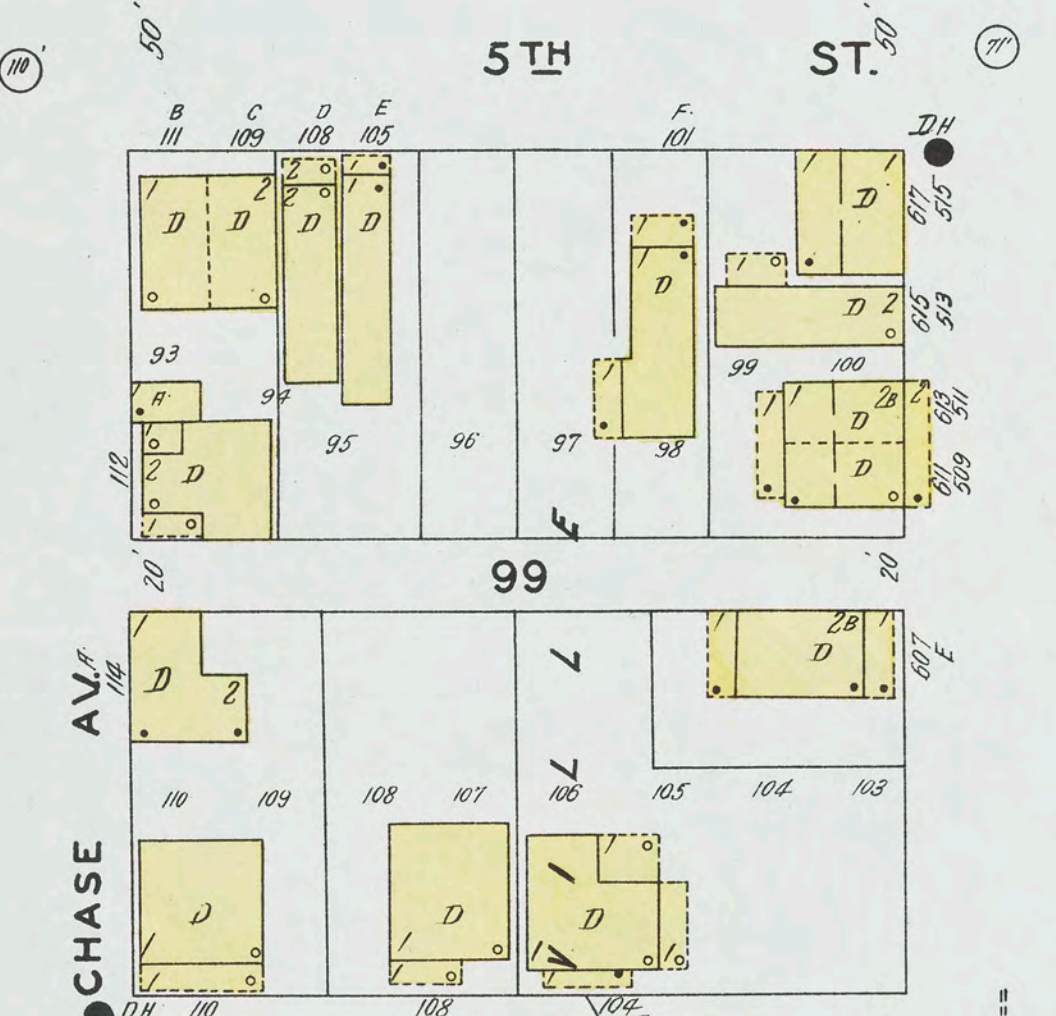
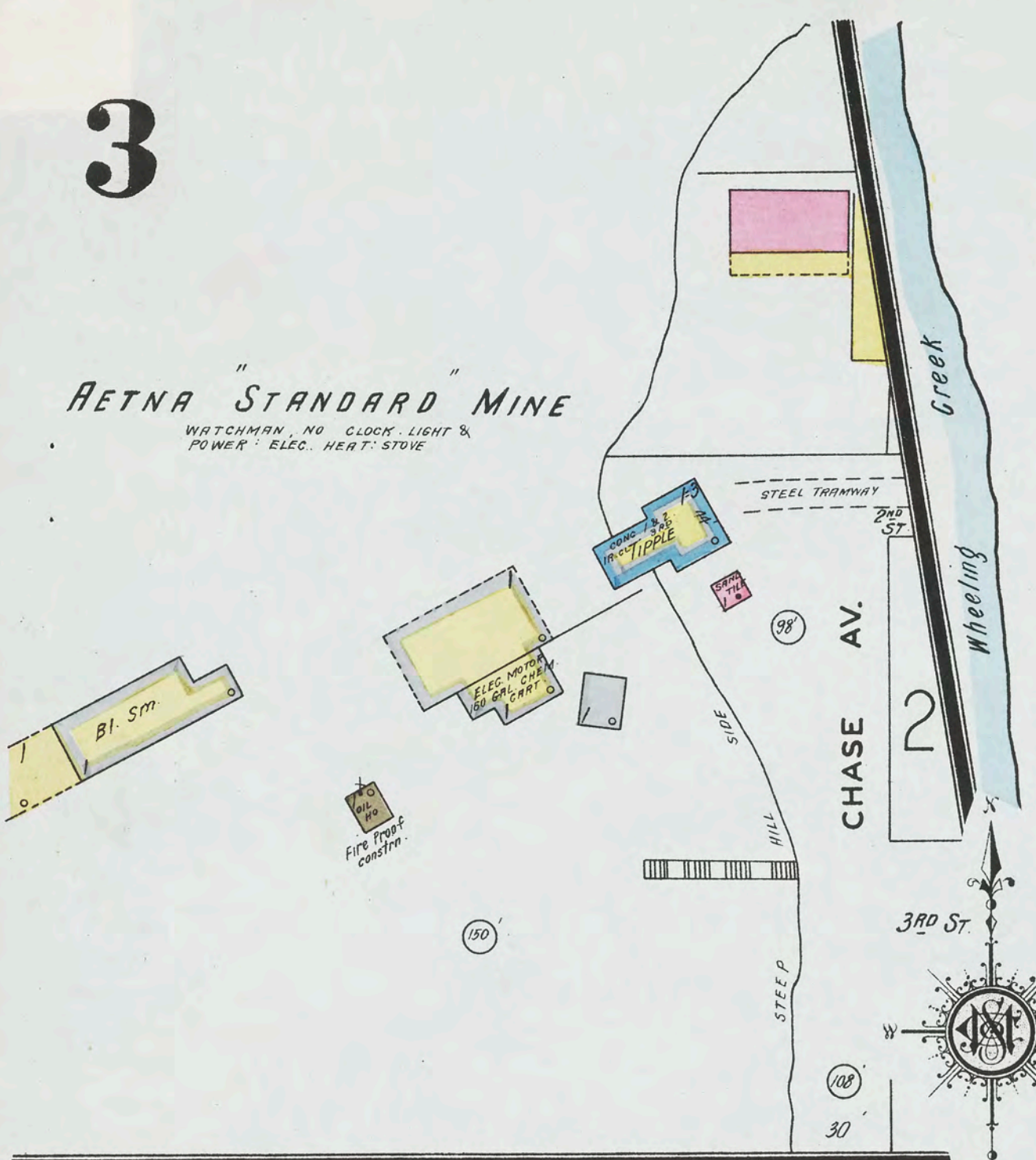


See Map of Martins Ferry



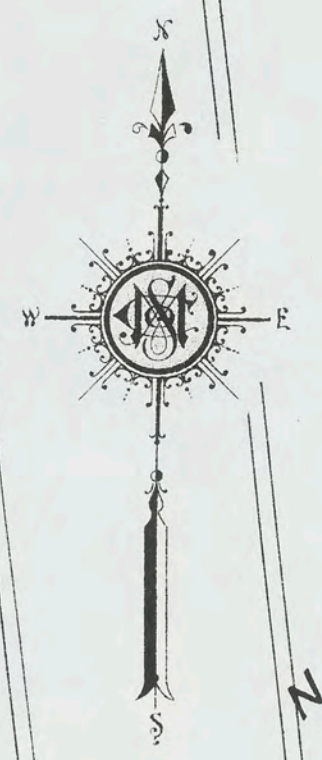
RETNA STANDARD MINE

WATCHMAN NO CLOCK LIGHT & POWER ELEC HEAT STOVE



MAY 1927 BRIDGEPORT OHIO

MAY 1927
BRIDGEPORT
OHIO



THE SCOTT LUMBER CO.

WATCHMAN APPD CLOCK
LIGHT & POWER-ELEC HEAT
STONES BLOWERS TO PLUMBERS
AUTO SPRINK IN W HO ONLY
DRY SYSTEM SUPPLIED BY
CITY MAIN

GARAGE
CAP. 20 CARS
HEAT-STEAM LIGHTS
CONC FL 1ST

WARE HO.

CONC FL 1ST
WOOD POSTS
WALLS PILASTD
STEEL TRUSS

PRINTS

MOVIES

CANDY FACTY 2'-3" & 4" S

BANK

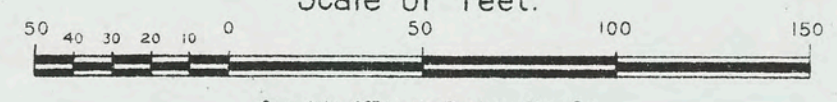
MOVIE

POST OFFICE

DRUGS

POST OFFICE

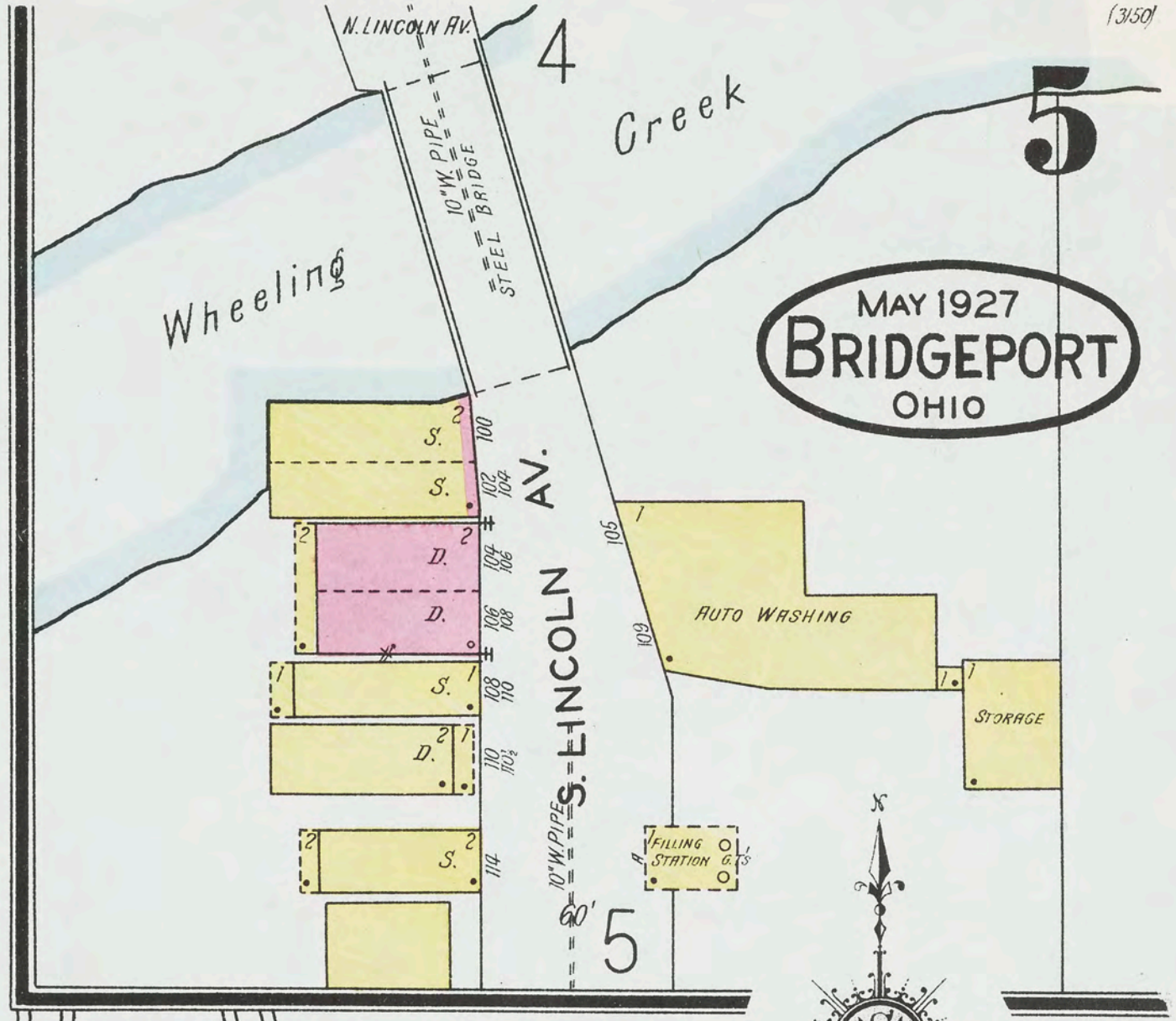
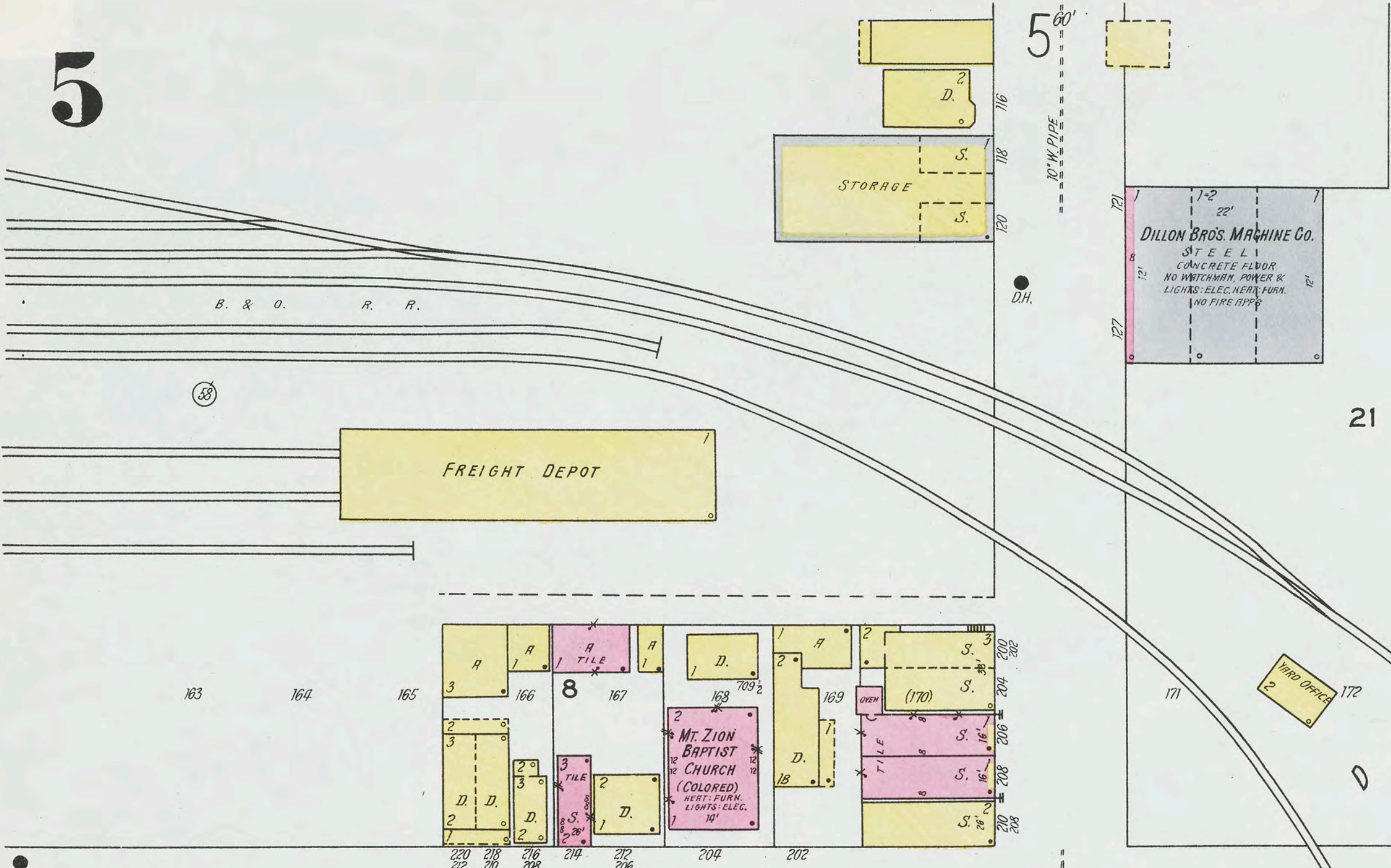
Scale of Feet.



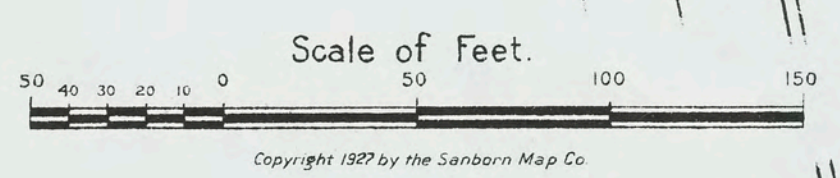
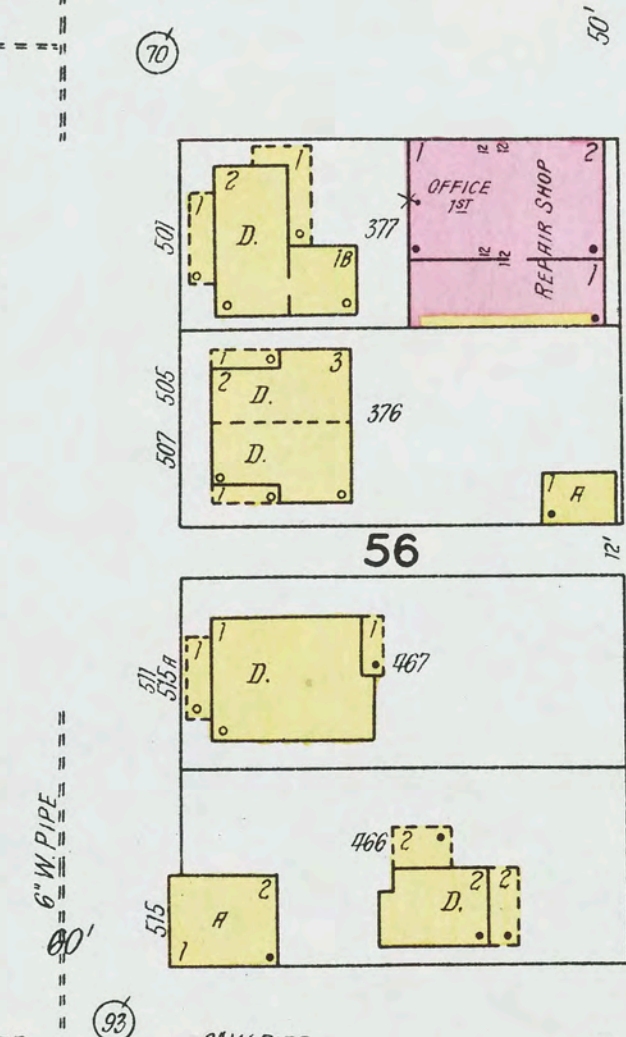
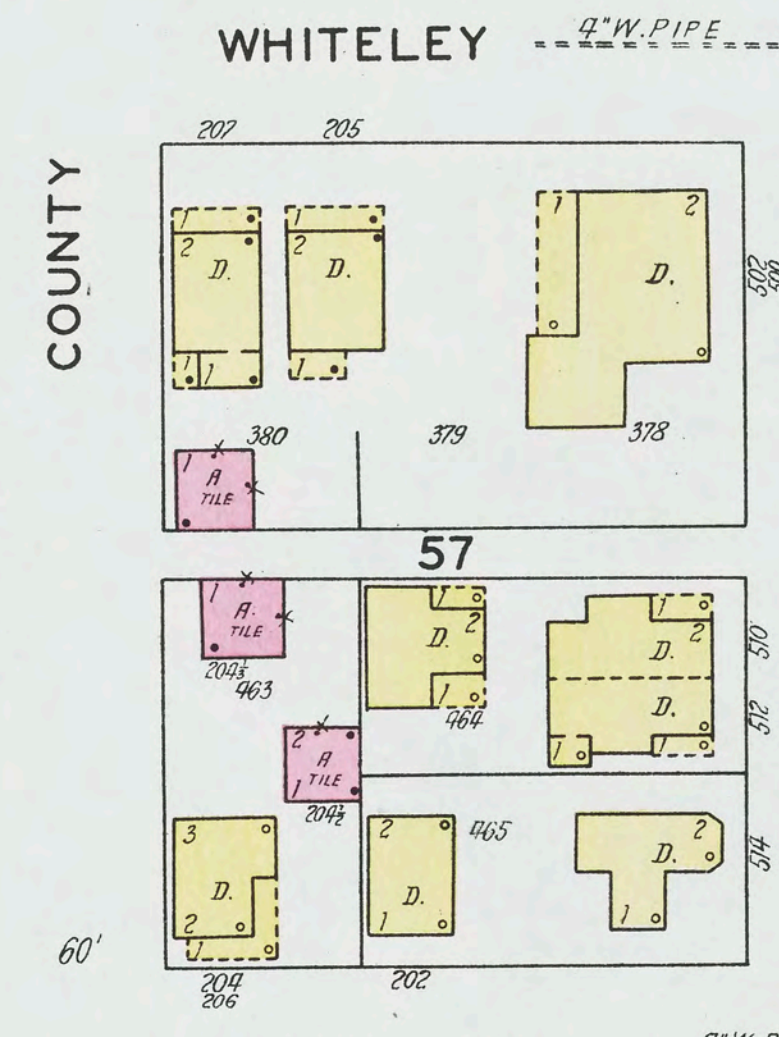
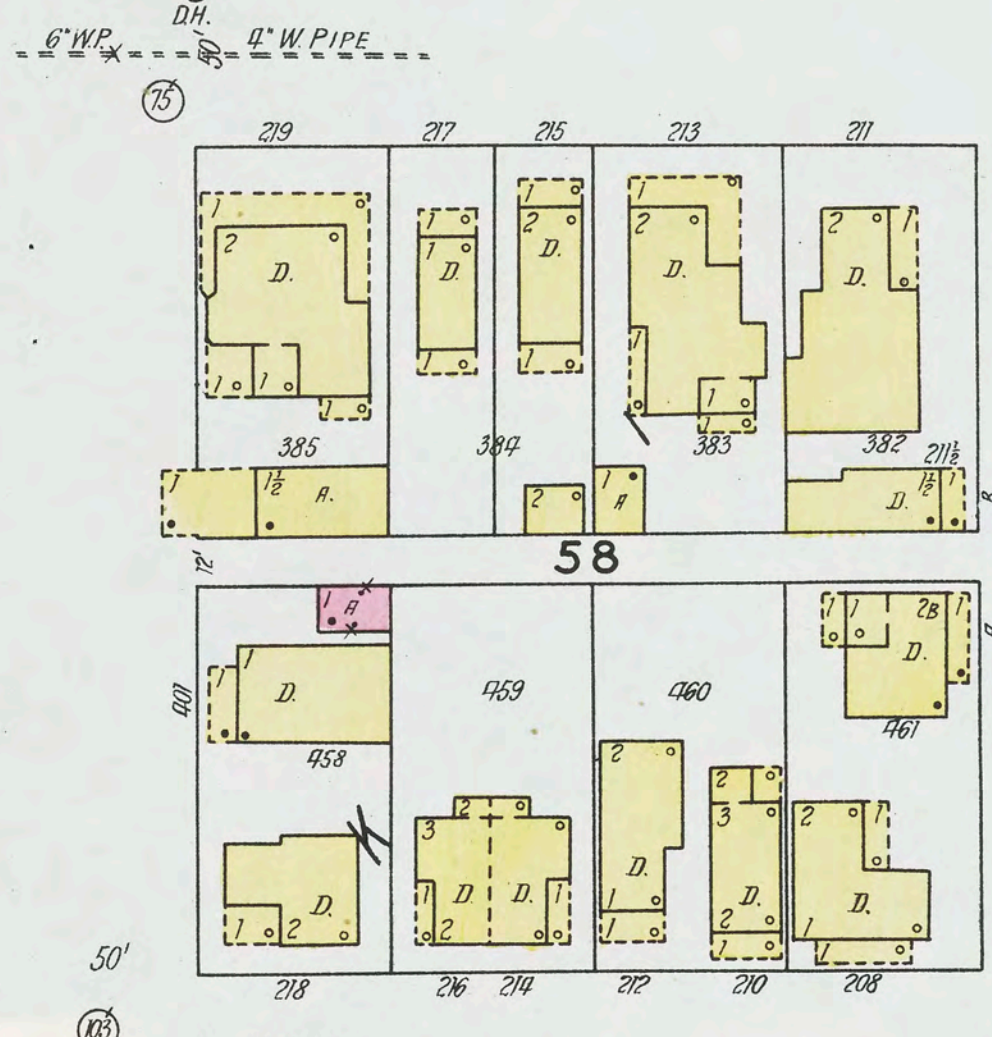
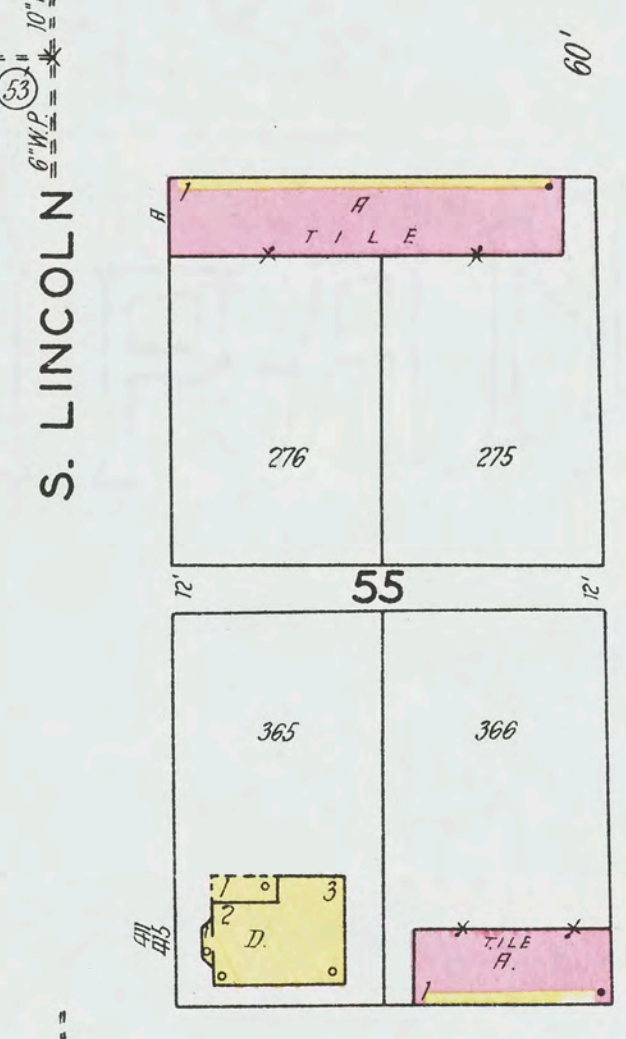
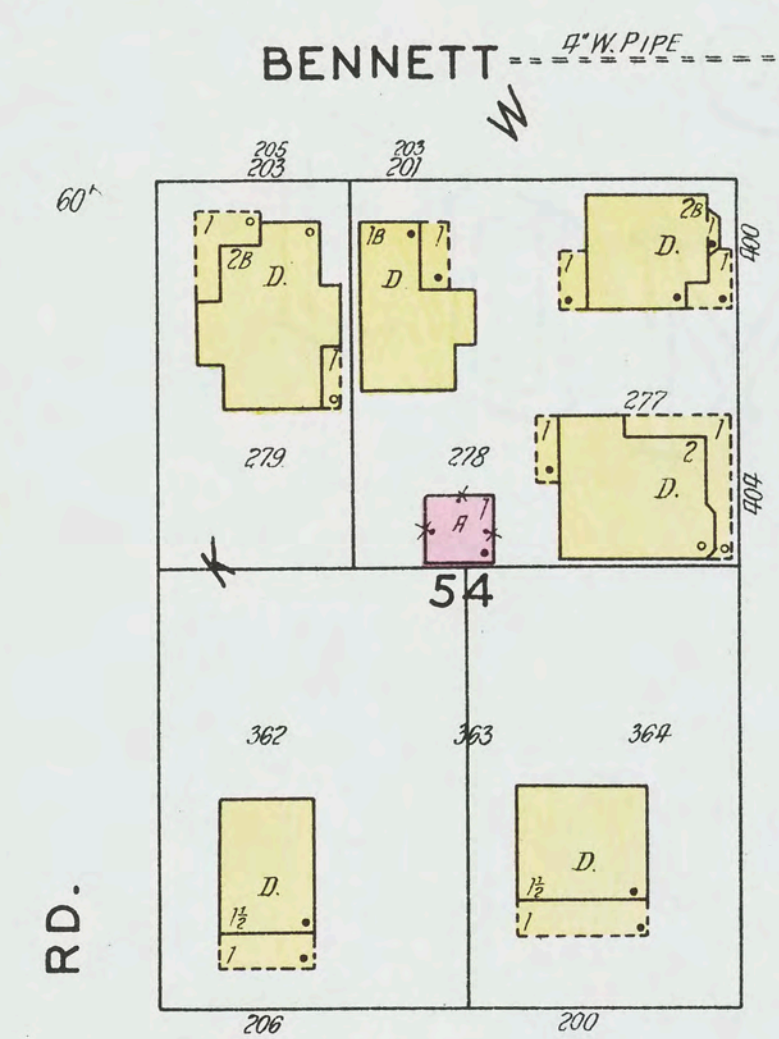
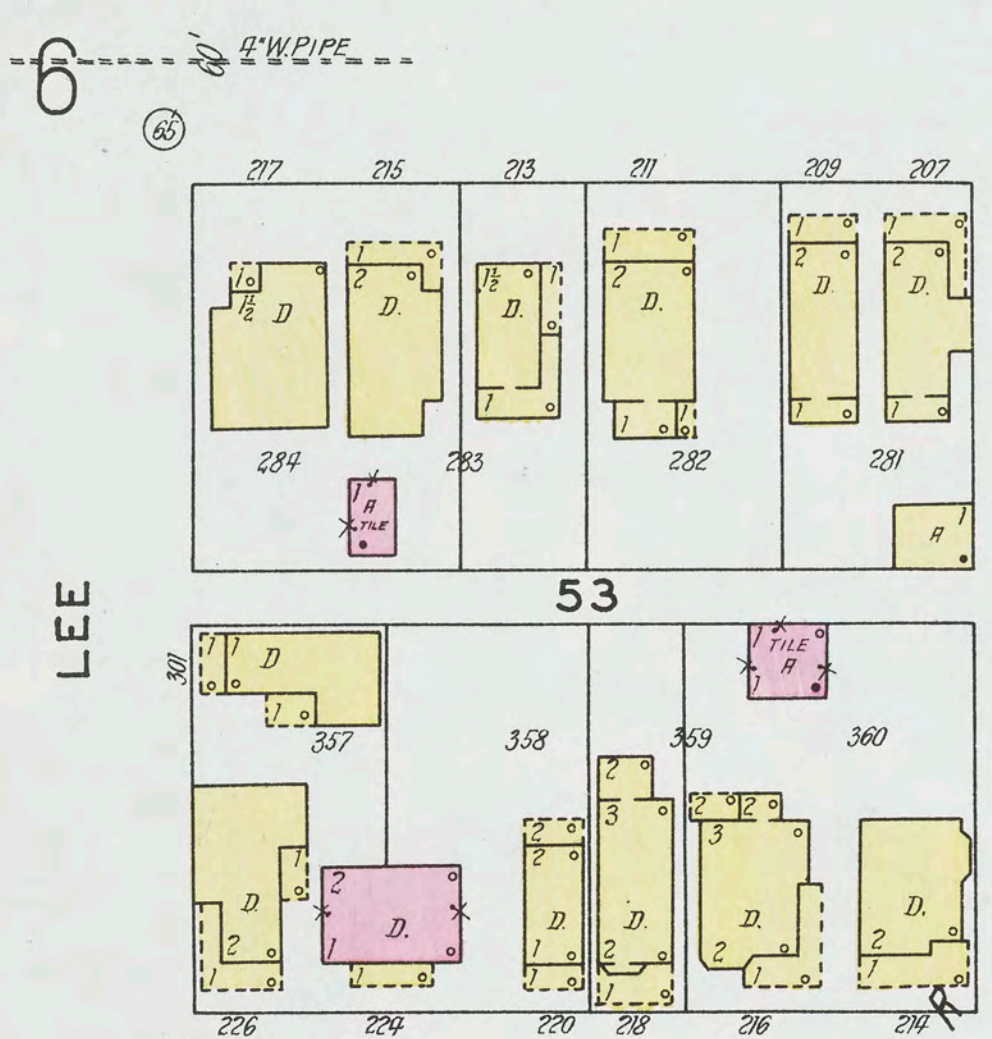
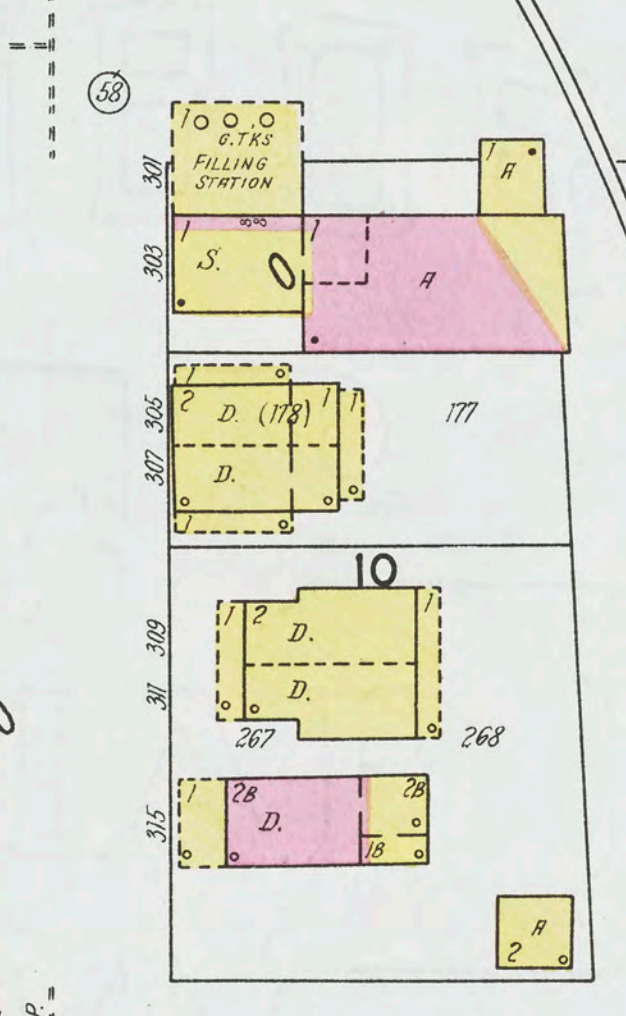
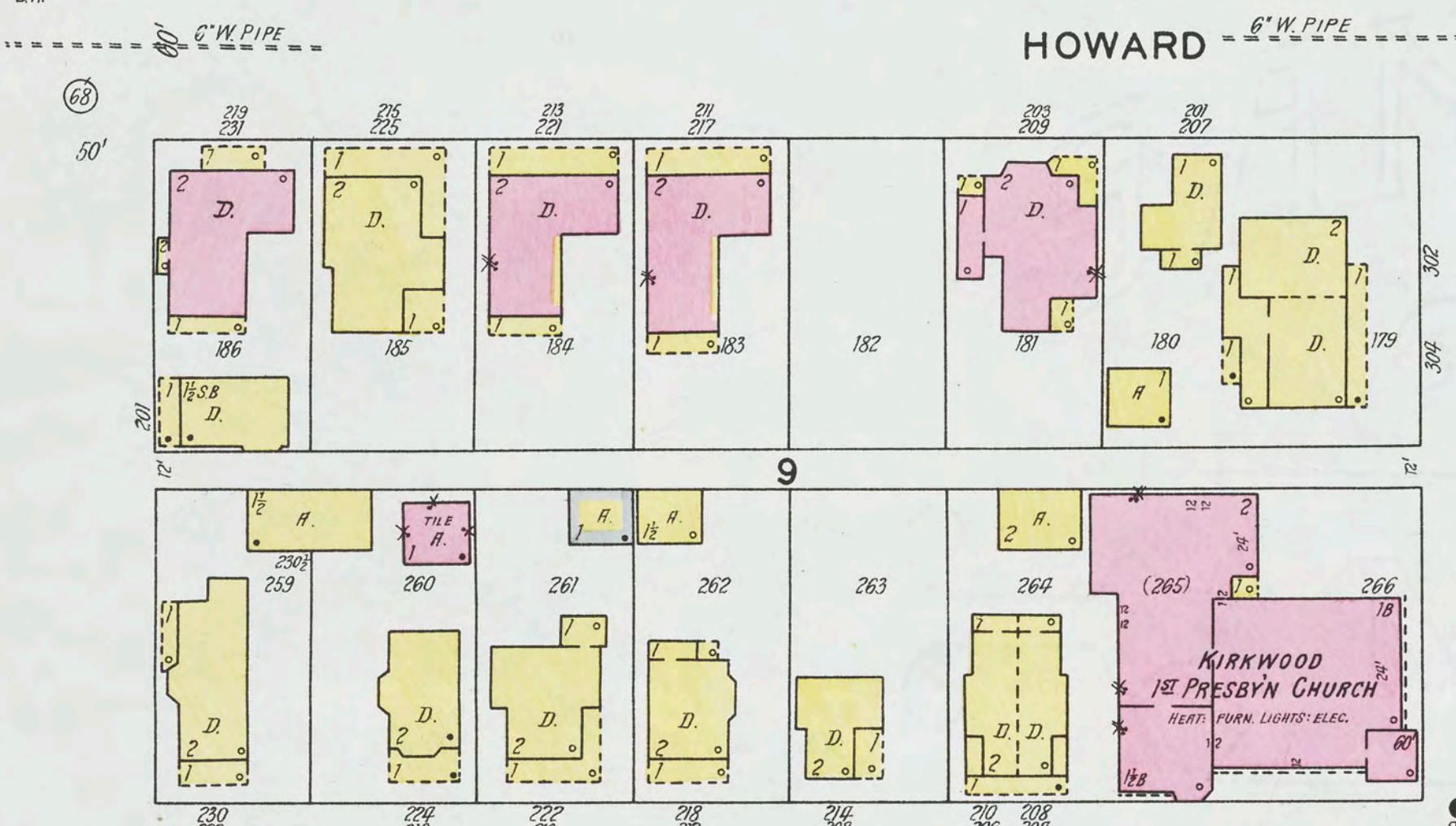
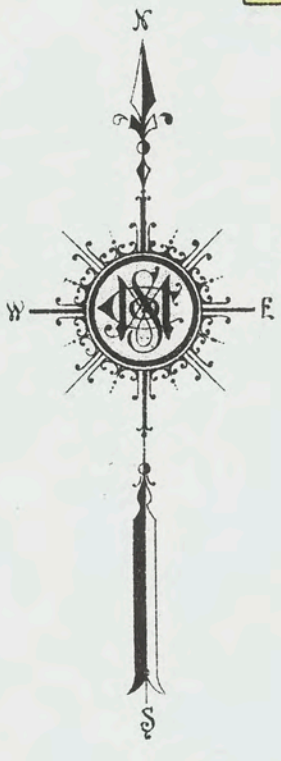
Copyright 1927 by the Sanborn Map Co.

5

5



MAY 1927
BRIDGEPORT
OHIO



B. & O. R. R.

MAY 1927
BRIDGEPORT
OHIO



HALL

HOWARD

BENNETT

WHITELEY

JACQUETT

DE KALB

LEE

69

66

65

60

77

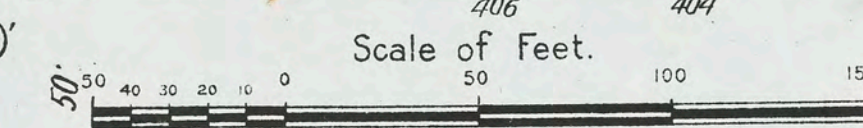
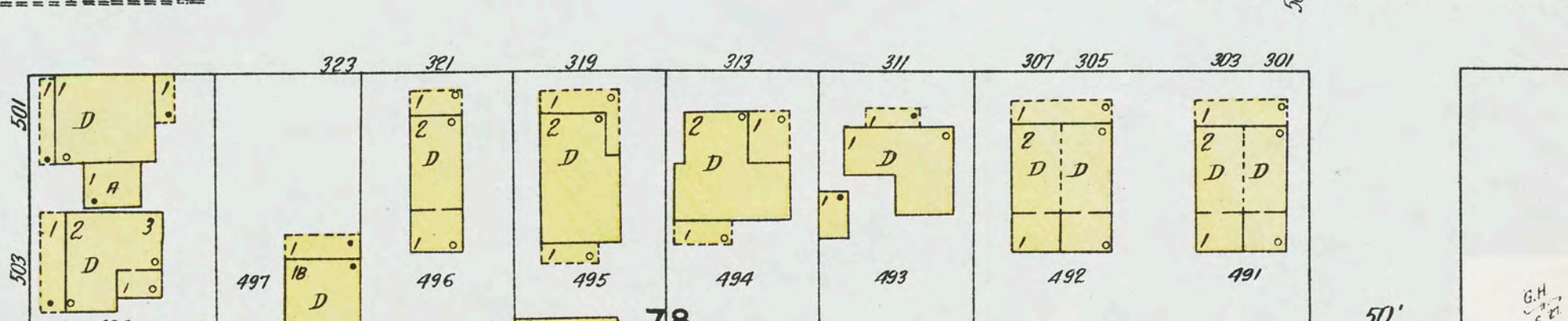
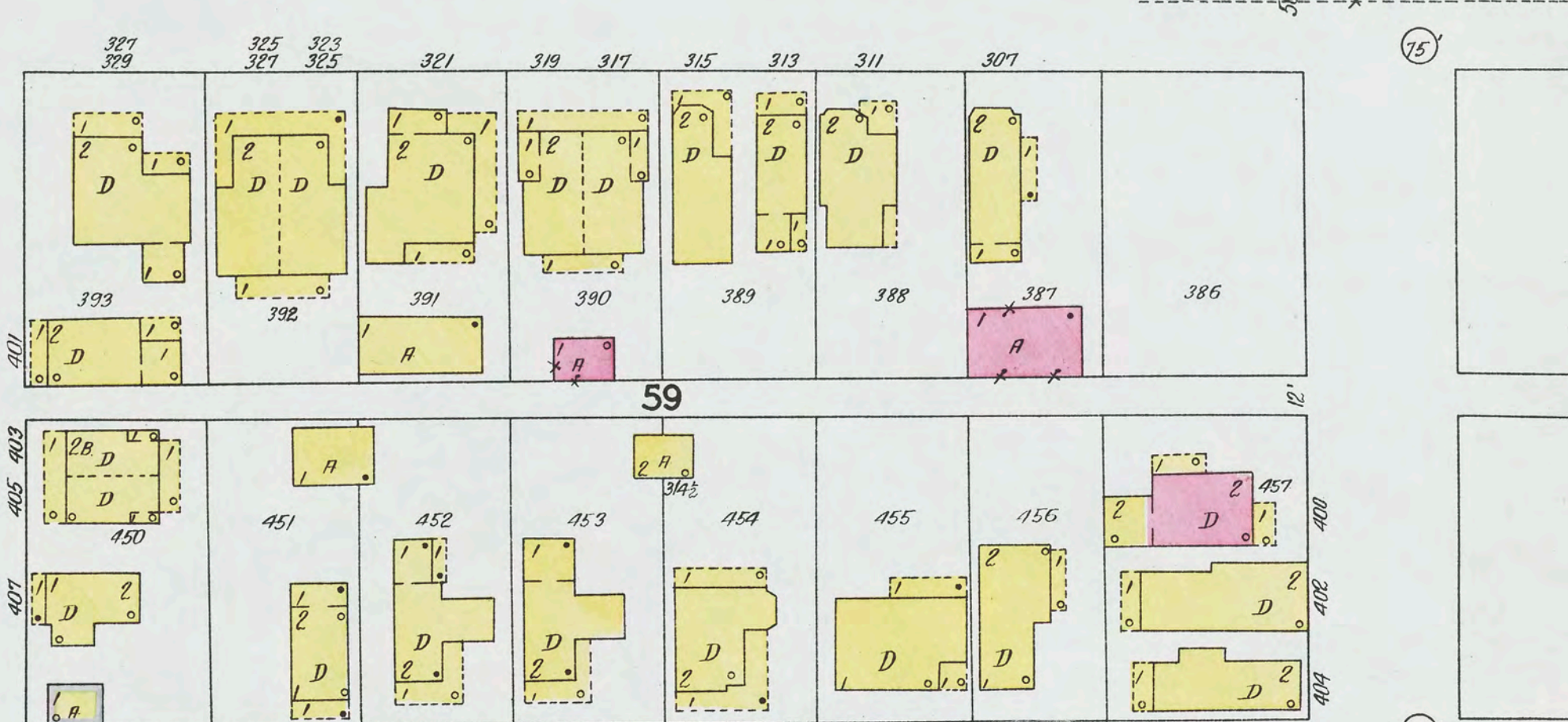
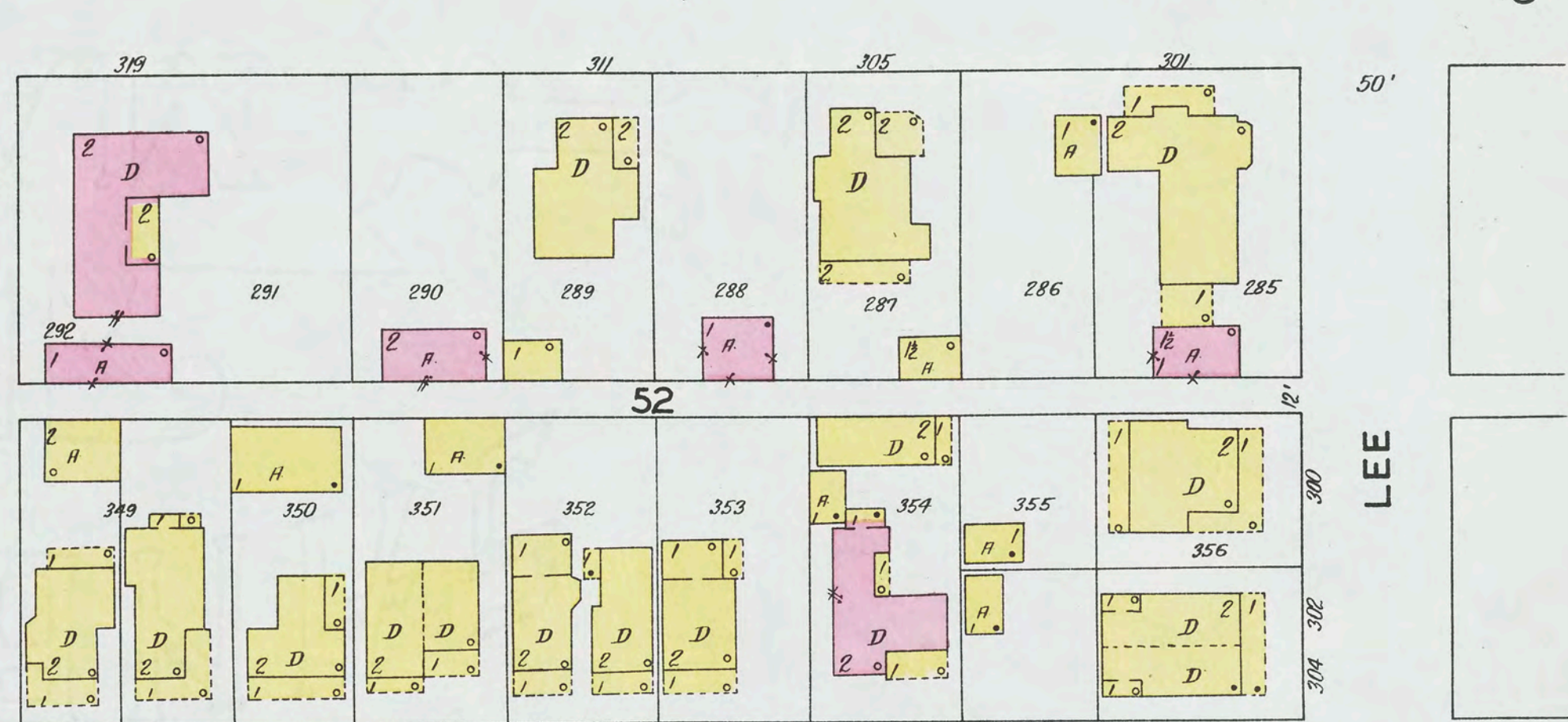
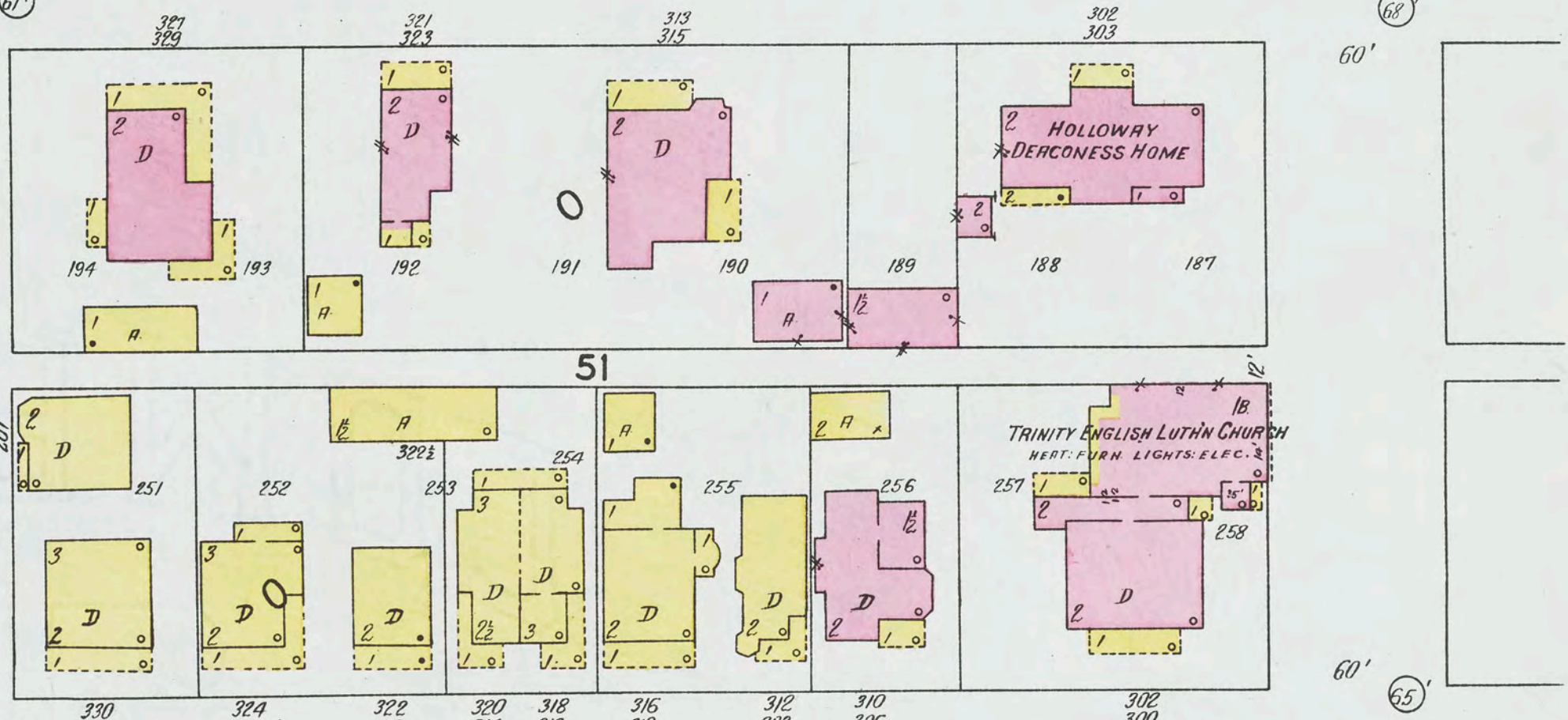
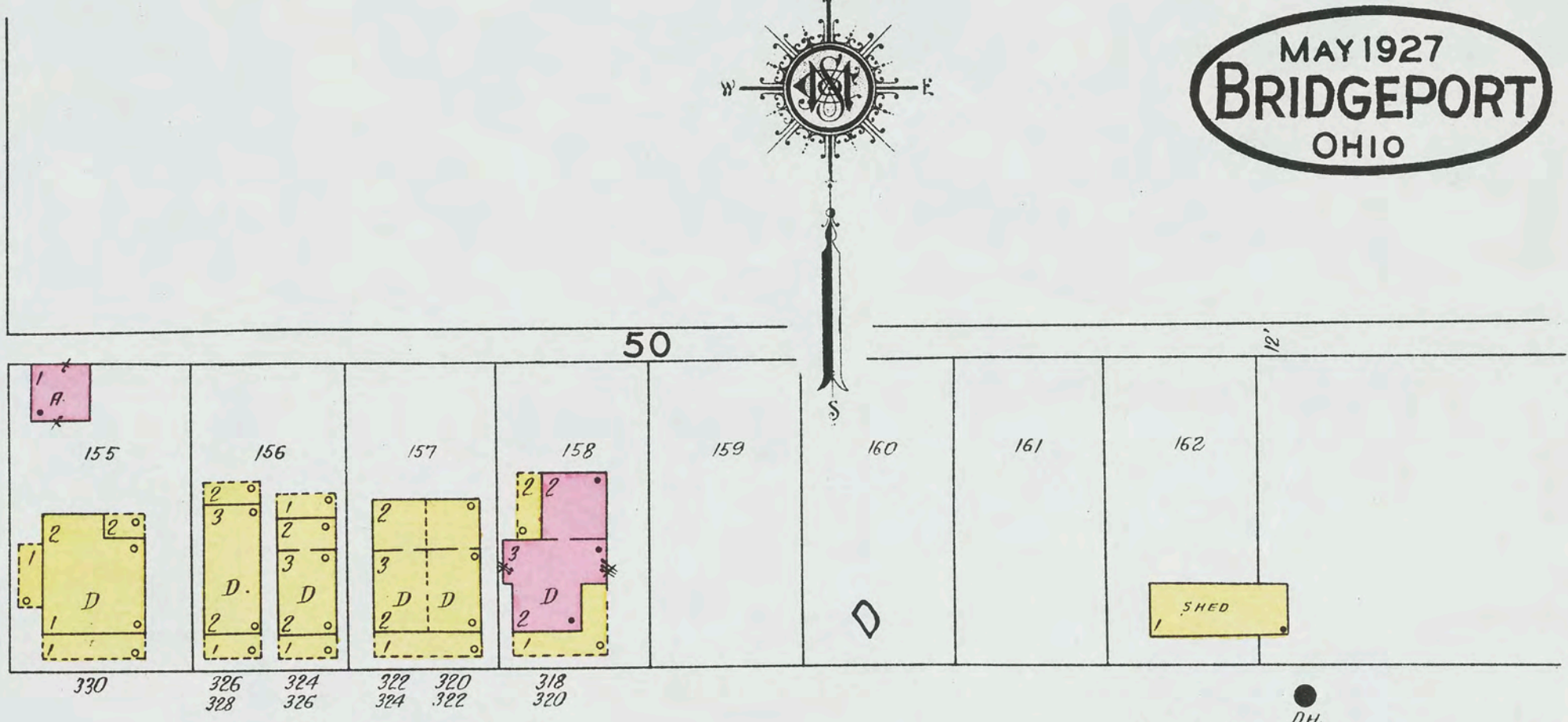
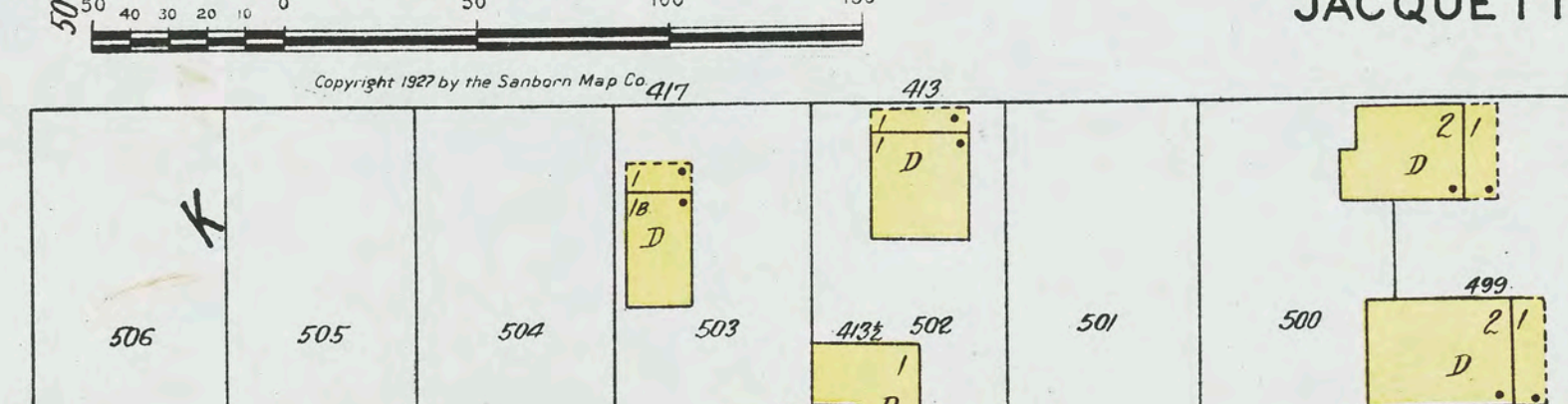
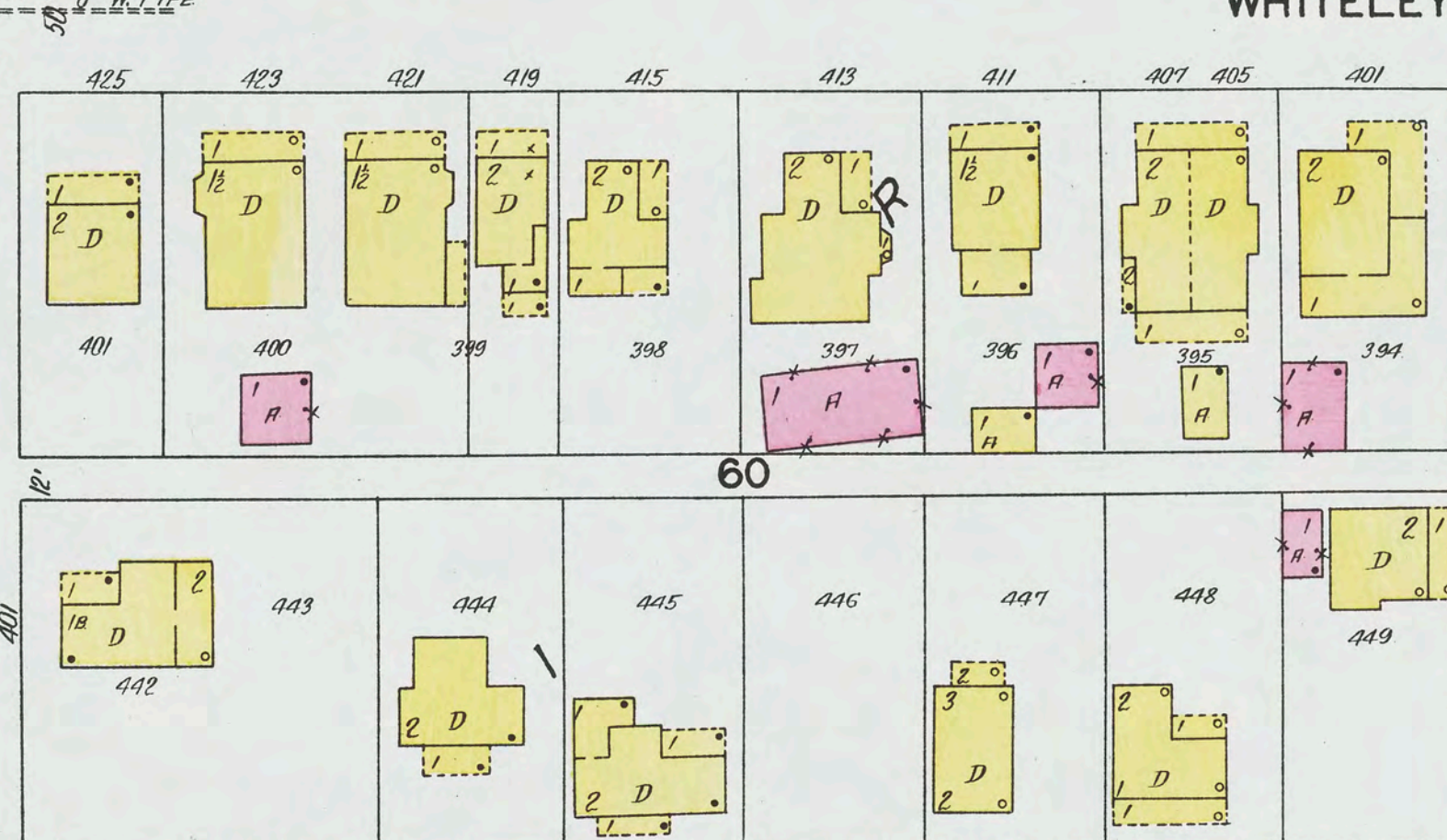
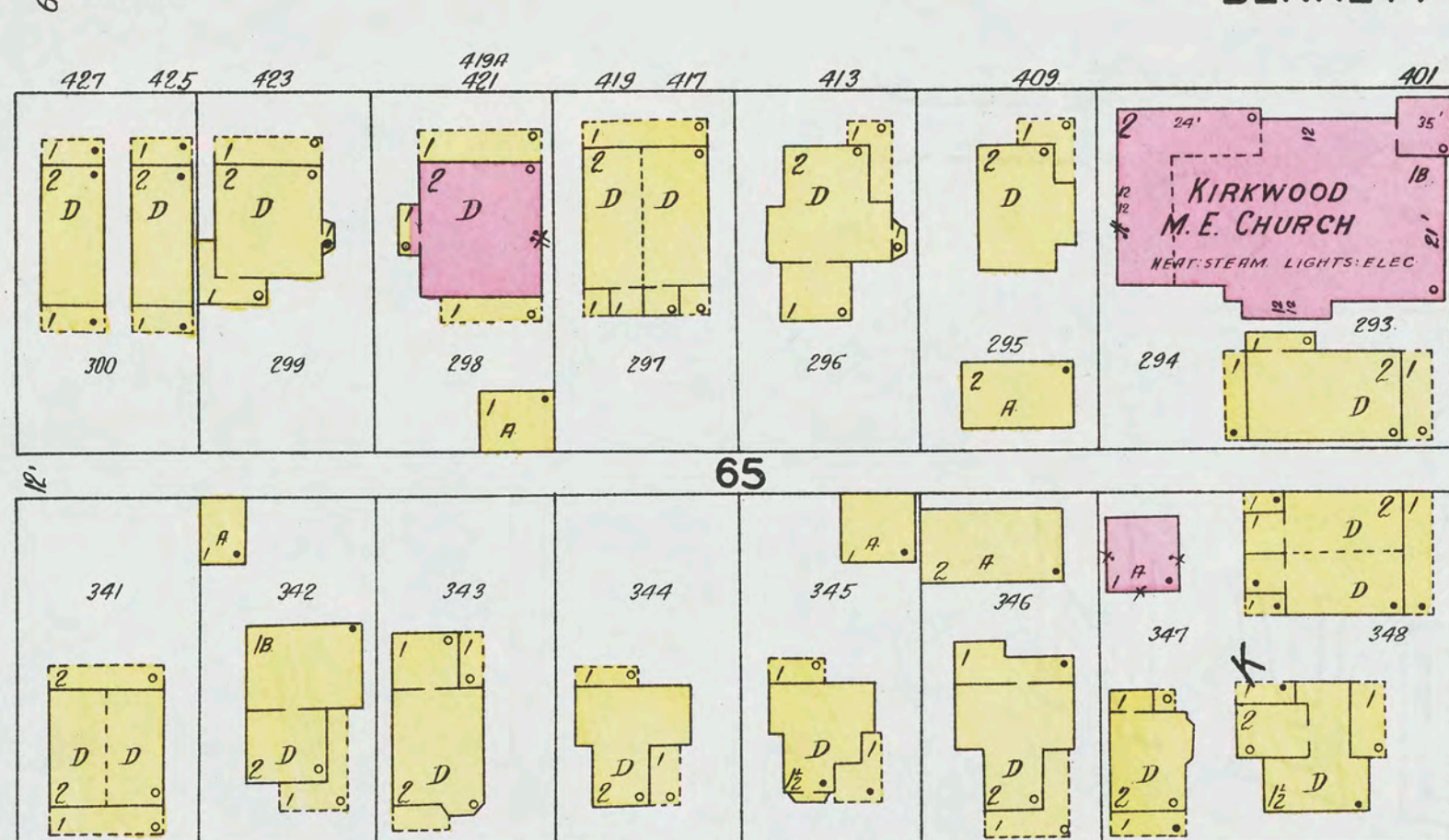
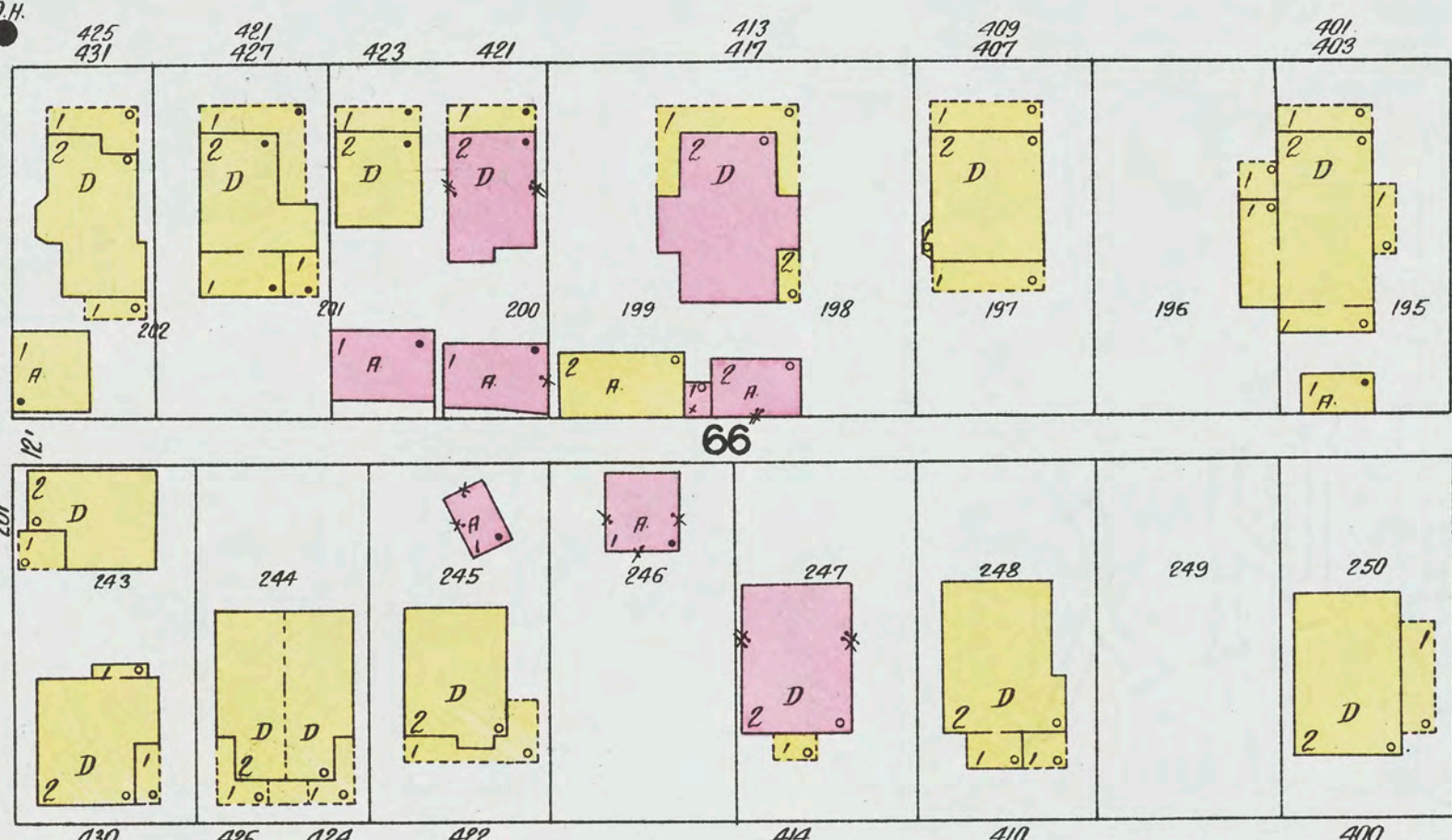
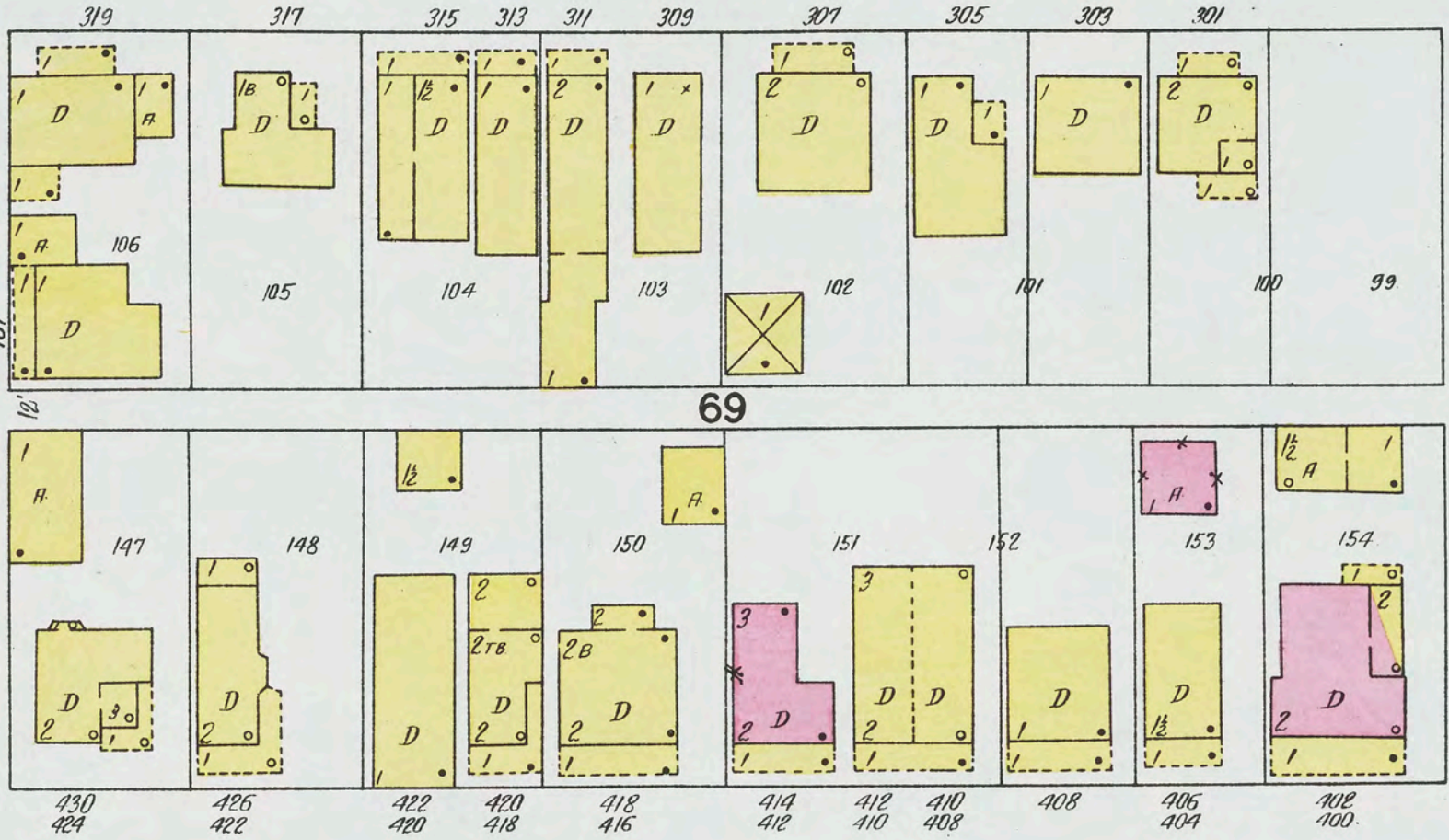
50

51

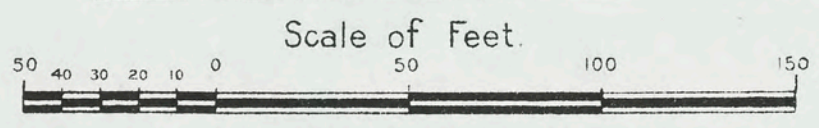
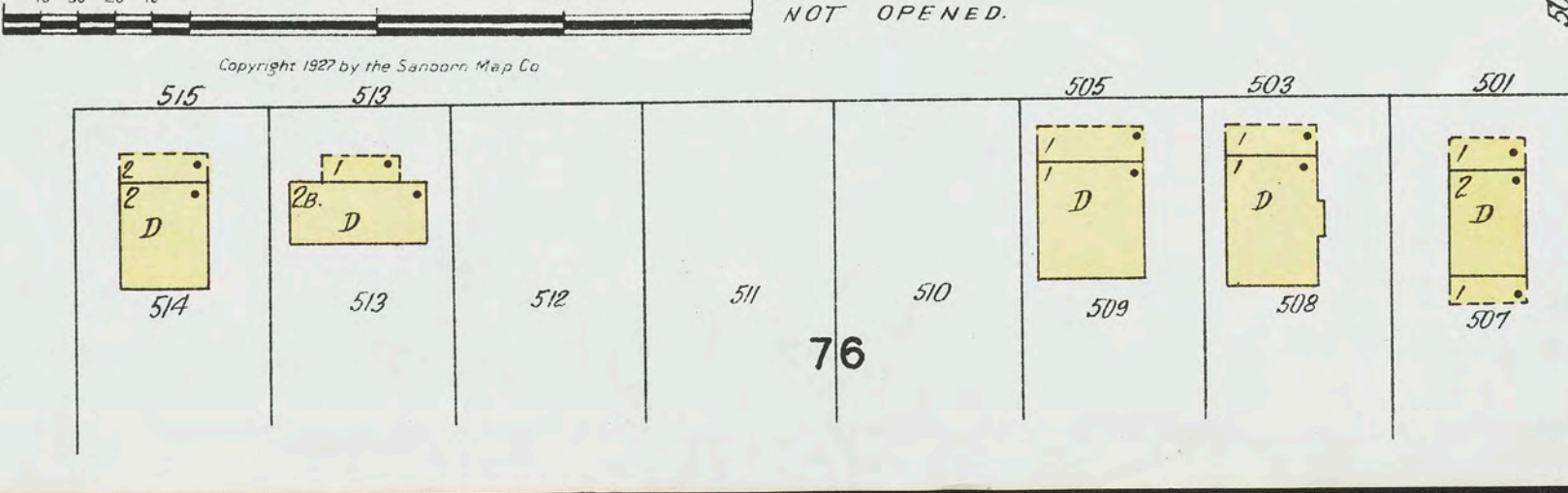
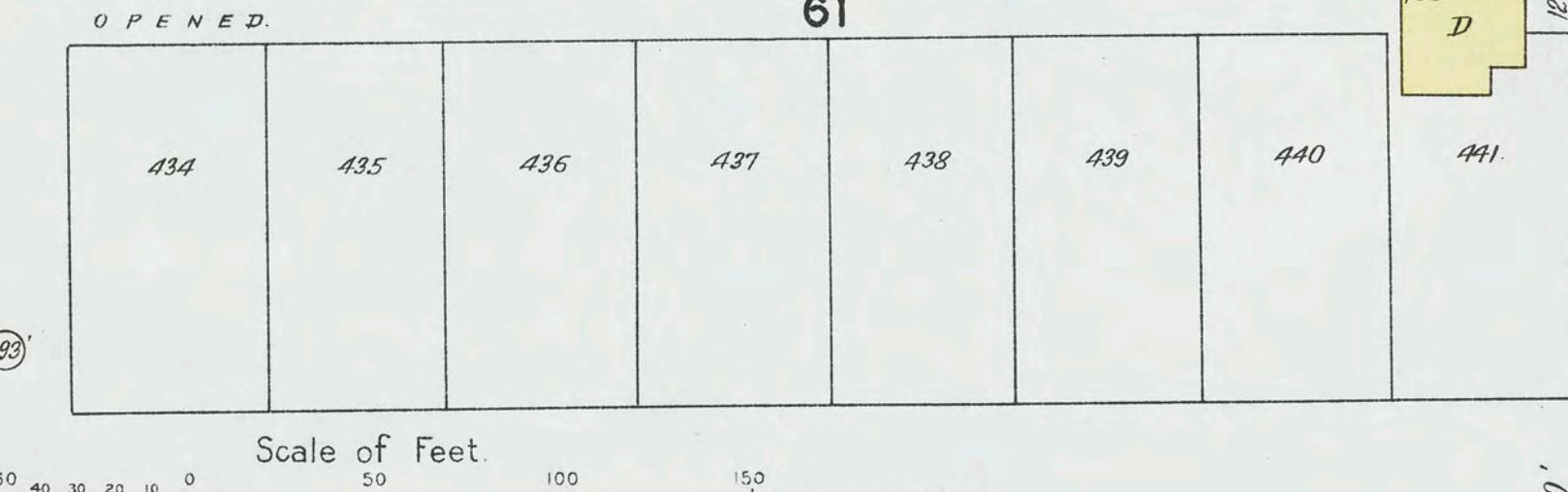
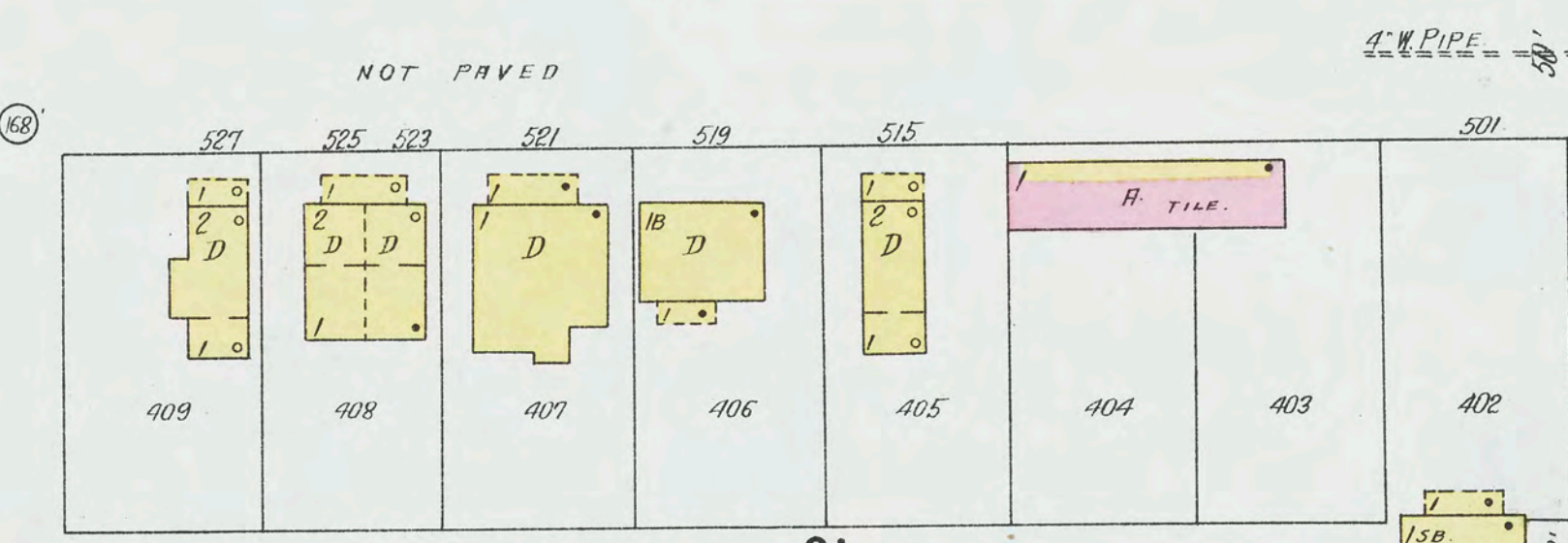
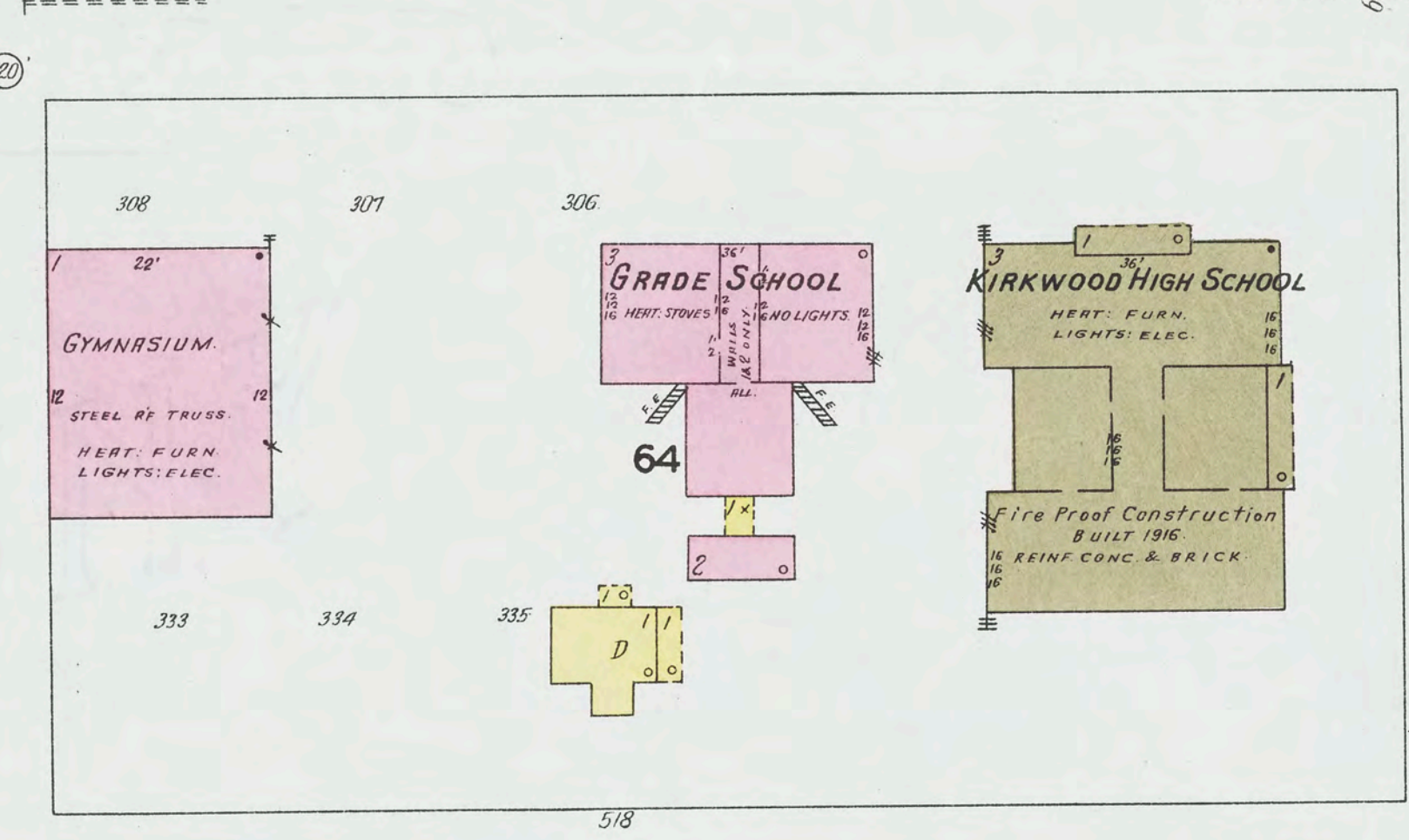
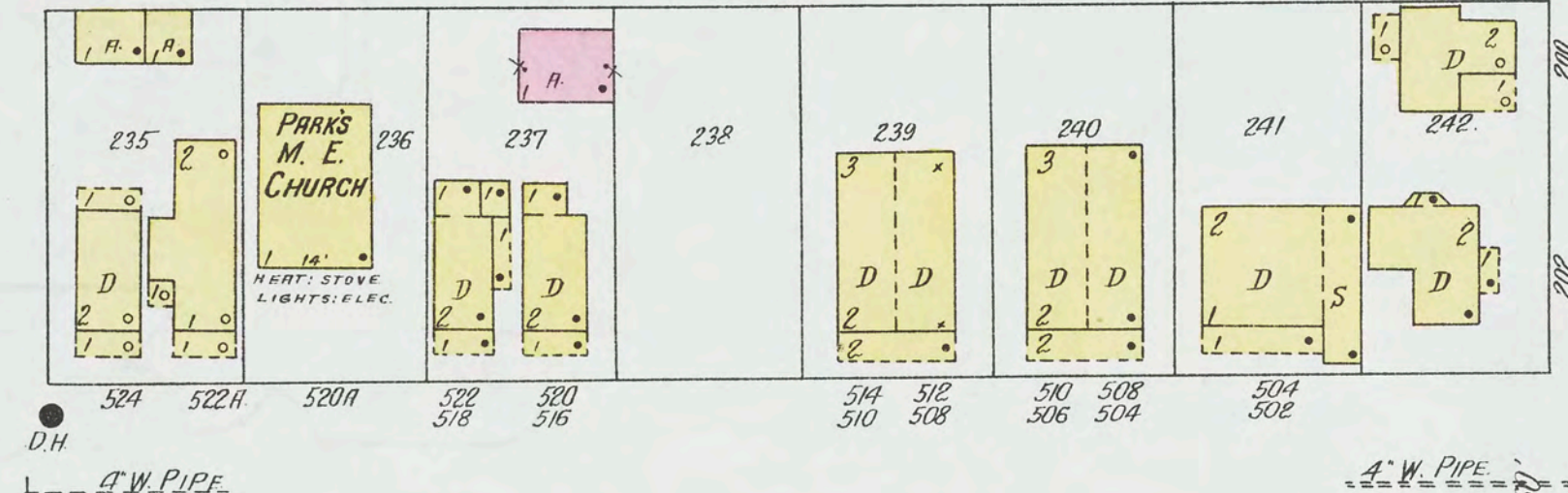
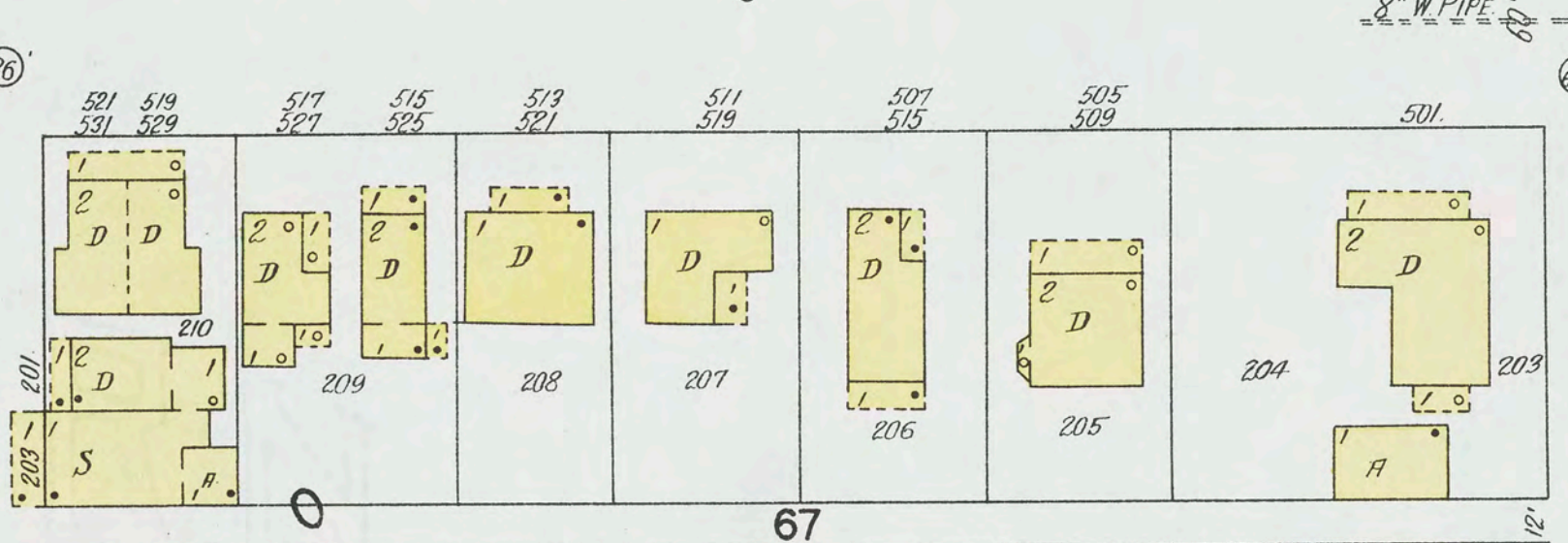
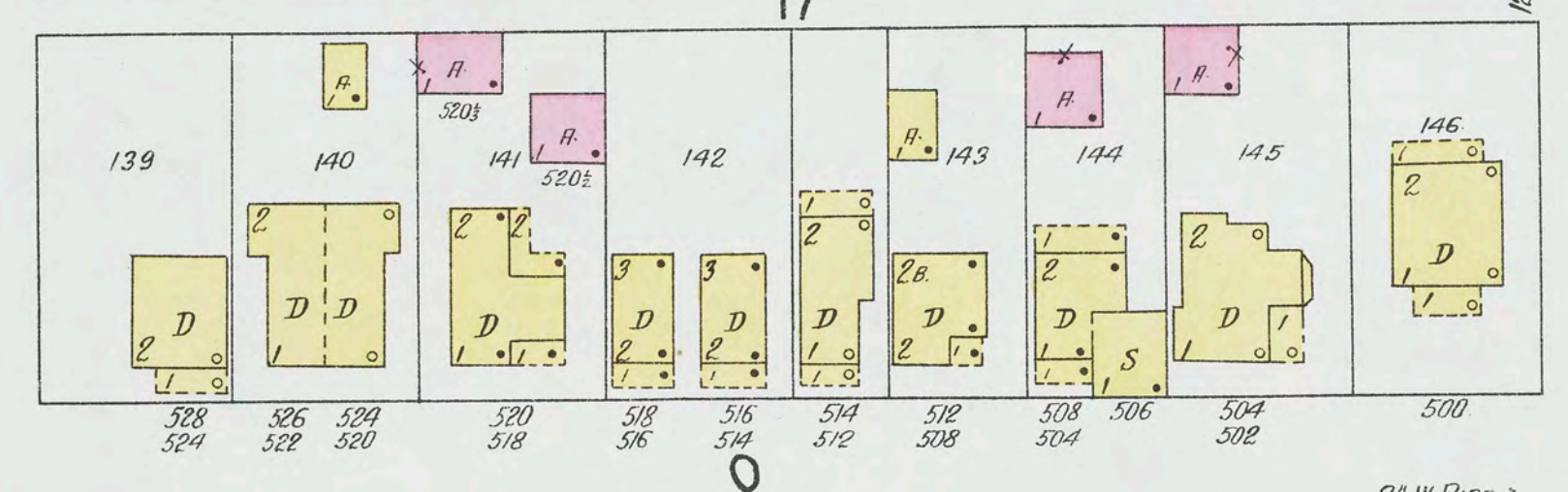
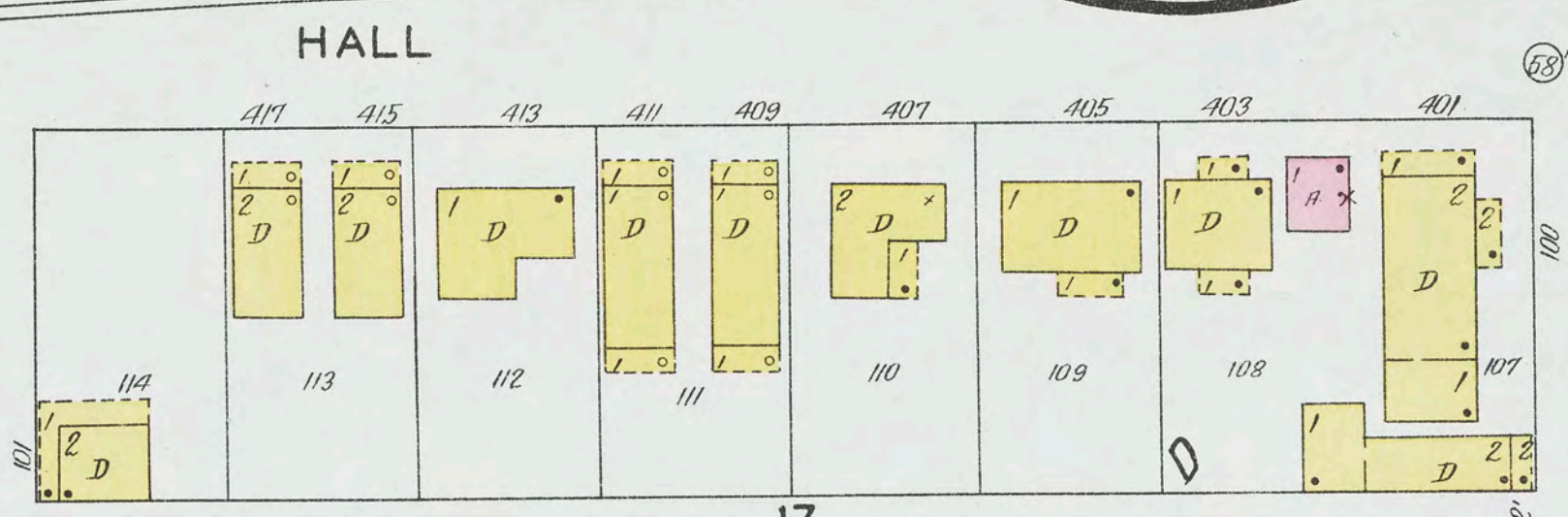
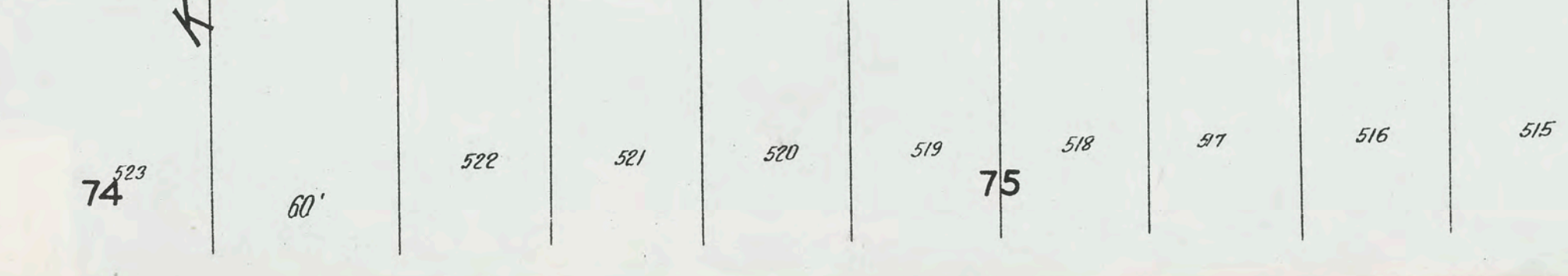
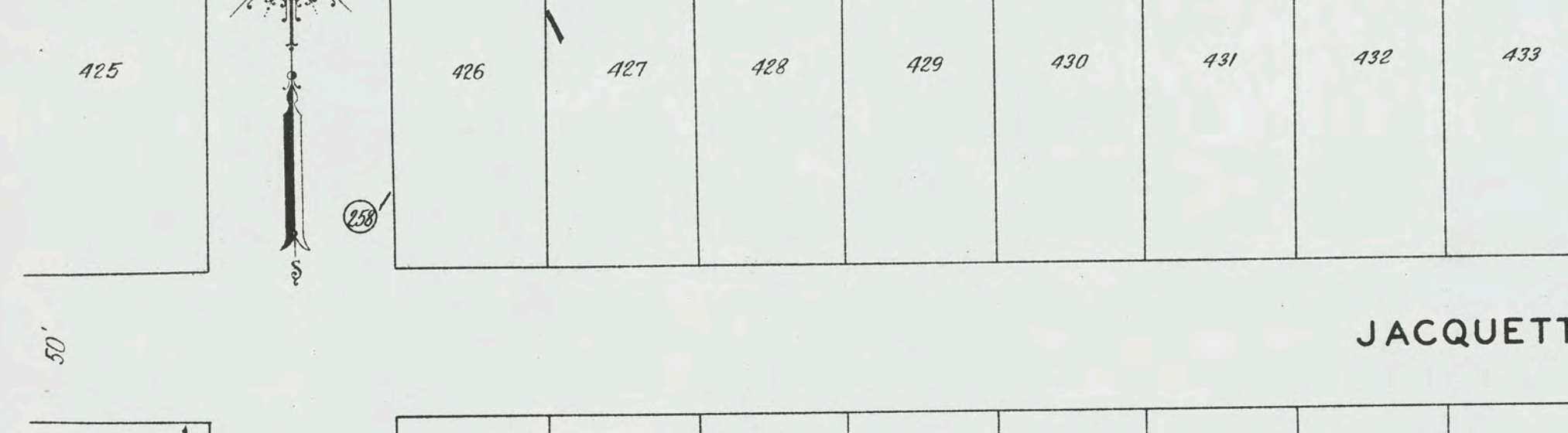
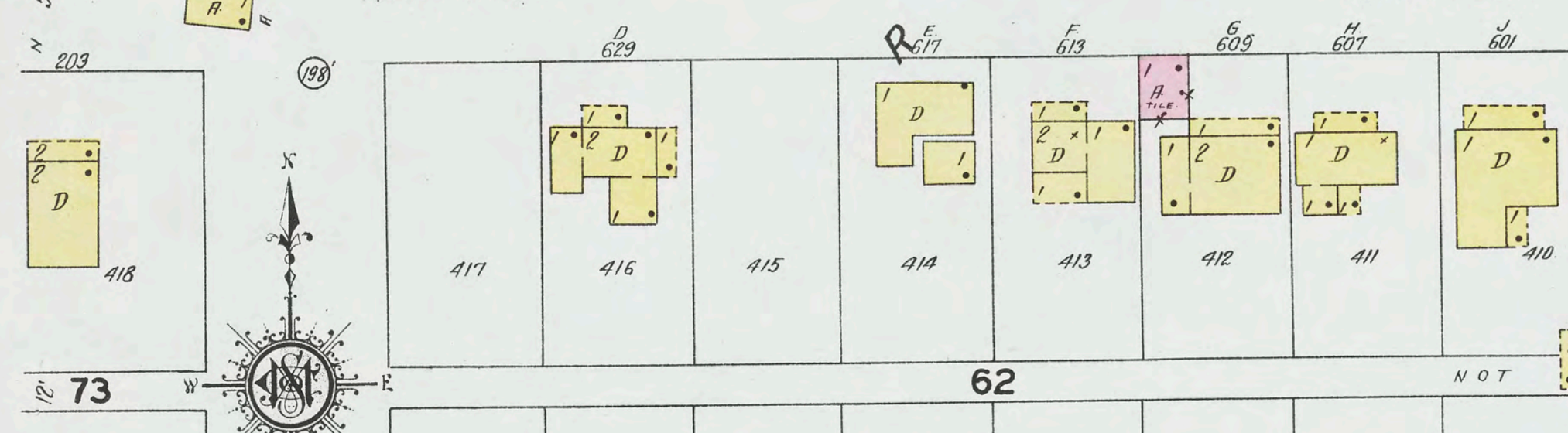
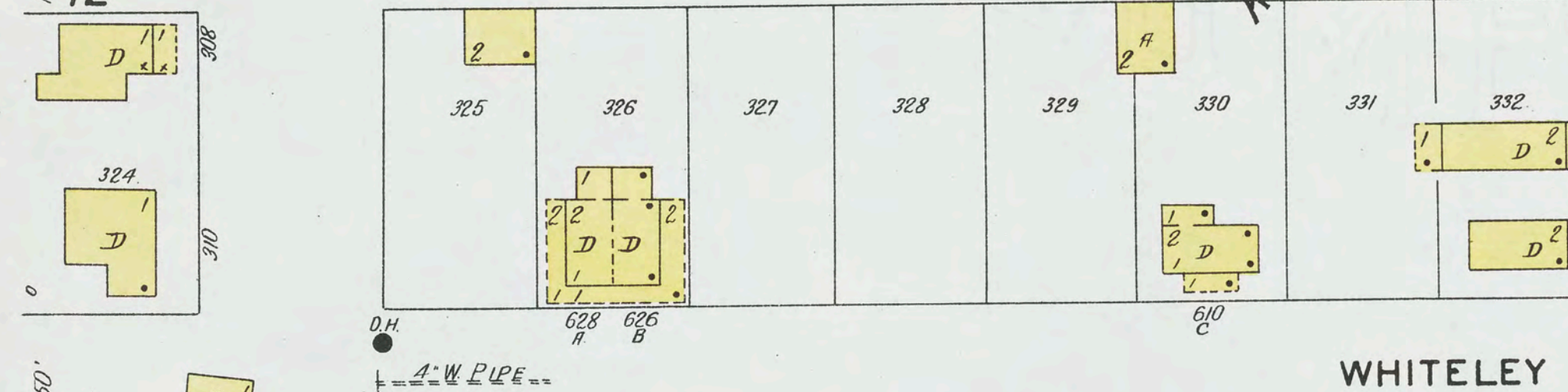
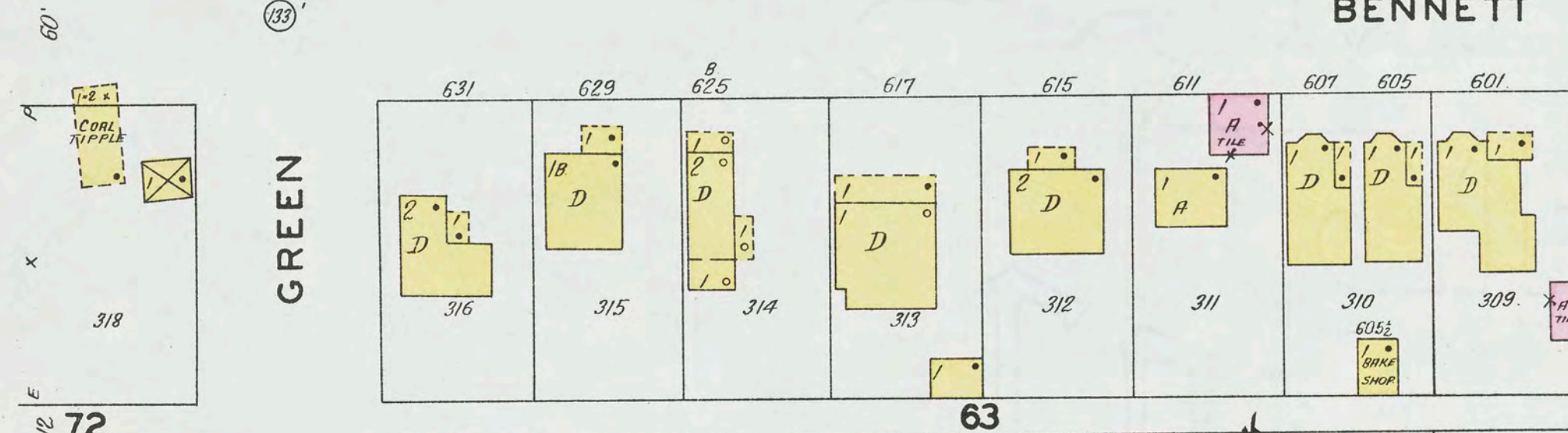
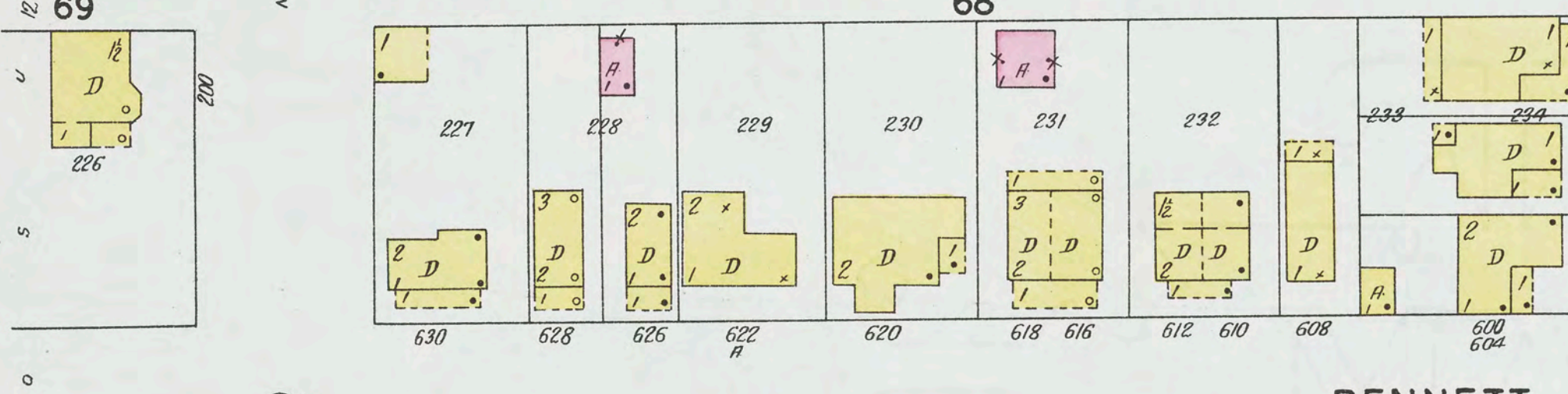
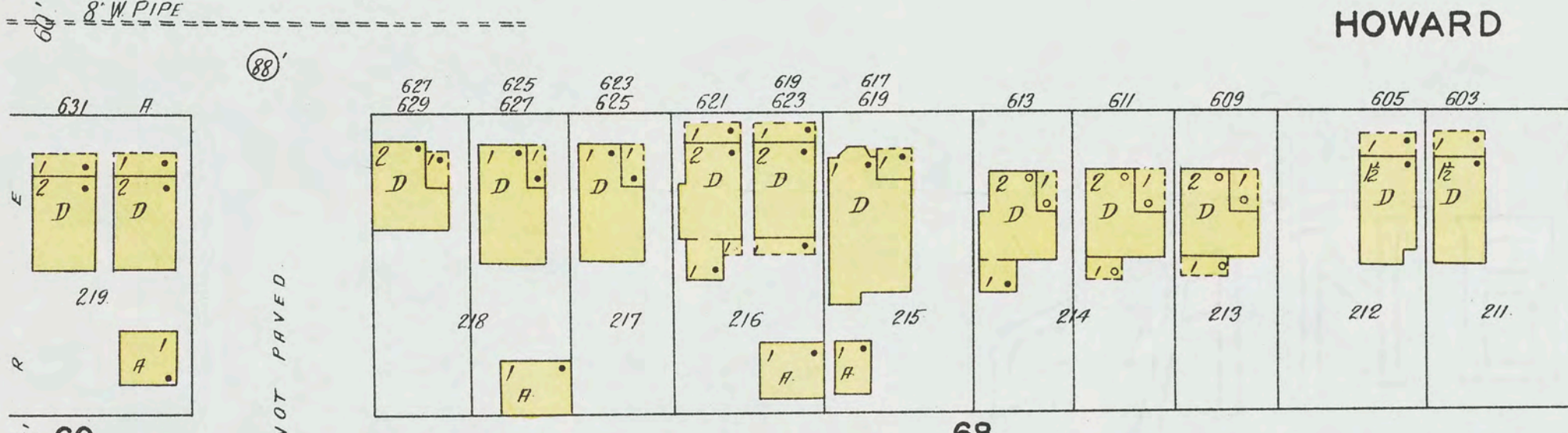
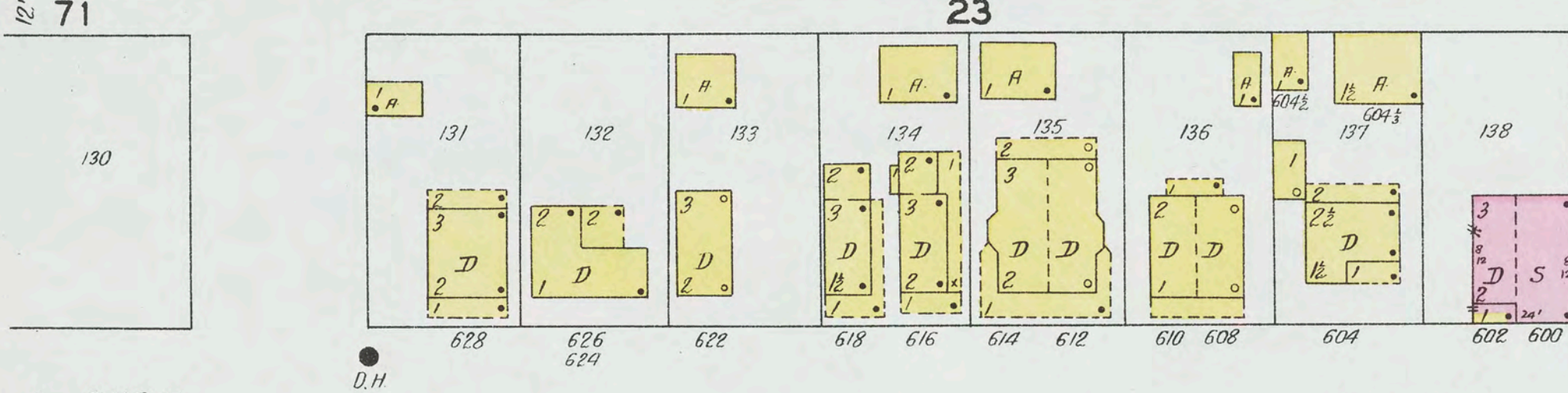
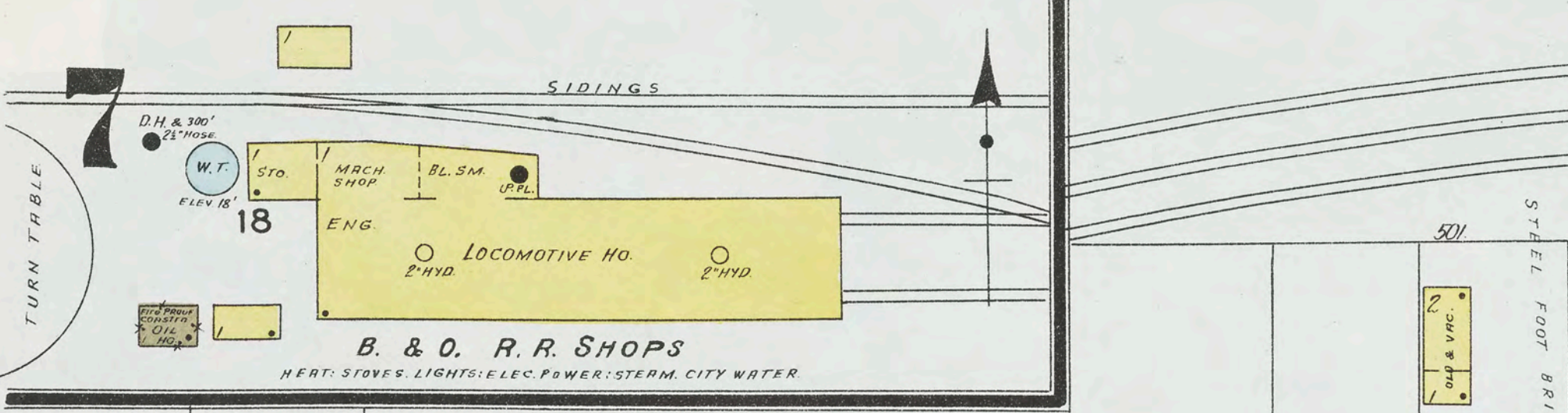
52

59

78



Copyright 1927 by the Sanborn Map Co.



Copyright 1927 by the Sanborn Map Co.



MAY 1927
BRIDGEPORT
 OHIO

PUBLIC SCHOOL
 HEAT: COAL GRATES, NO LIGHTS

SCHOOL.
 HEAT: STOVES
 LIGHTS: ELEC.

CHURCH
 HEAT: FURN
 LIGHTS: ELEC.

ST. ANTHONY OF PADUA R.C. PARISH

SCHOOL.
 HEAT: STOVES
 LIGHTS: ELEC.
 HALL 2ND
 FIRE PROOF CONST-
 CONC. BLDG. PAR. BR. WOOD BUILT
 3 FEET 40

FREE METHODIST CHURCH
 HEAT: GAS
 LIGHTS: ELEC.

GERMAN LUTHERAN CHURCH
 HEAT: GAS
 LIGHTS: ELECTRIC

PRINTING

GARAGE
 CAPACITY 16 CARS
 HEAT: STOVES
 LIGHTS: ELEC.

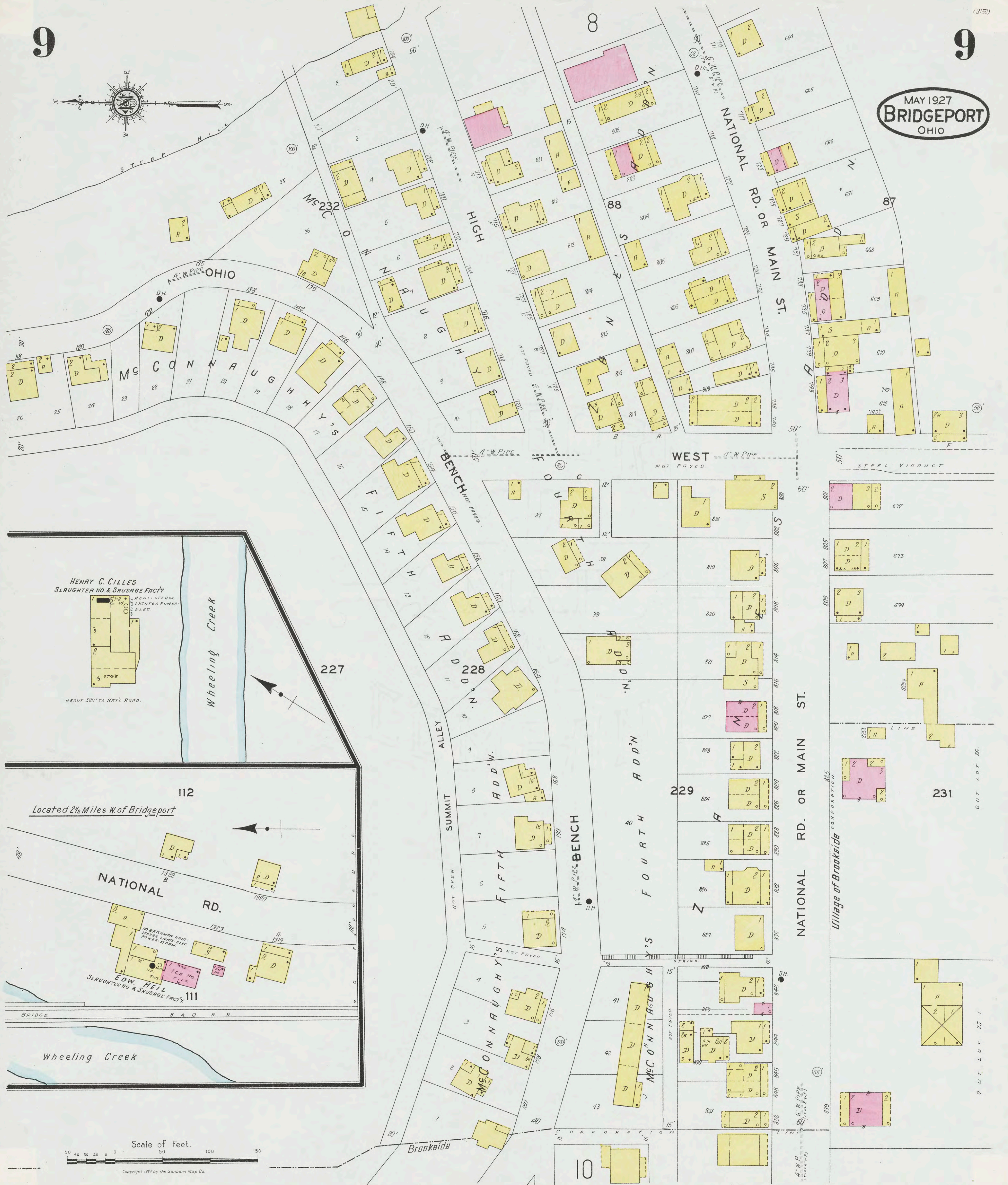
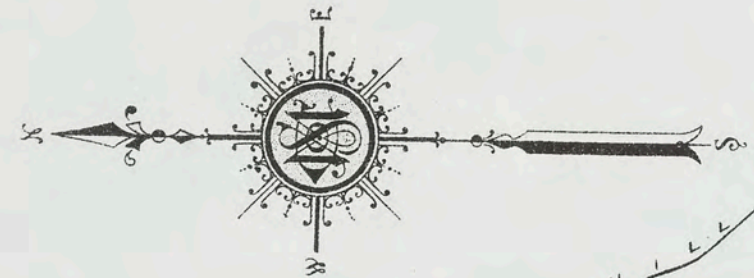
AUTO REPAIR

AUTO PRINTING
 CONC
 619

Scale of Feet.
 0 50 100 150

Copyright 1927 by the Sanborn Map Co.

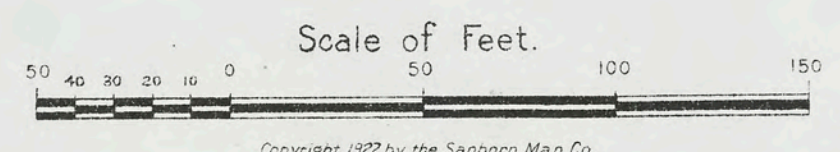
MAY 1927
BRIDGEPORT
OHIO



HENRY C. GILLES
SLAUGHTER HO. & SAUSAGE FACTY
HEAT, STEAM,
LIGHTS & POWER,
ELEC.
STGE.
ABOUT 500' TO NAT'L ROAD.

112
Located 2 1/2 Miles W. of Bridgeport

NATIONAL RD.
NO WITCHMAN HEAT,
STGES, LIGHTS, ELEC,
POWER, STEAM.
EDW. HEIL
SLAUGHTER HO. & SAUSAGE FACTY.
ICE HO.
ENG. T. L. E.



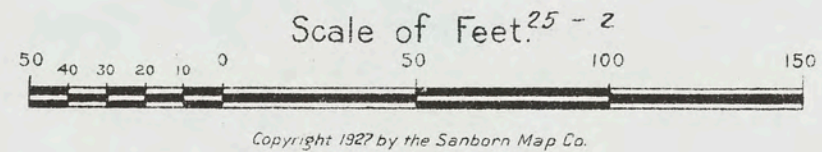
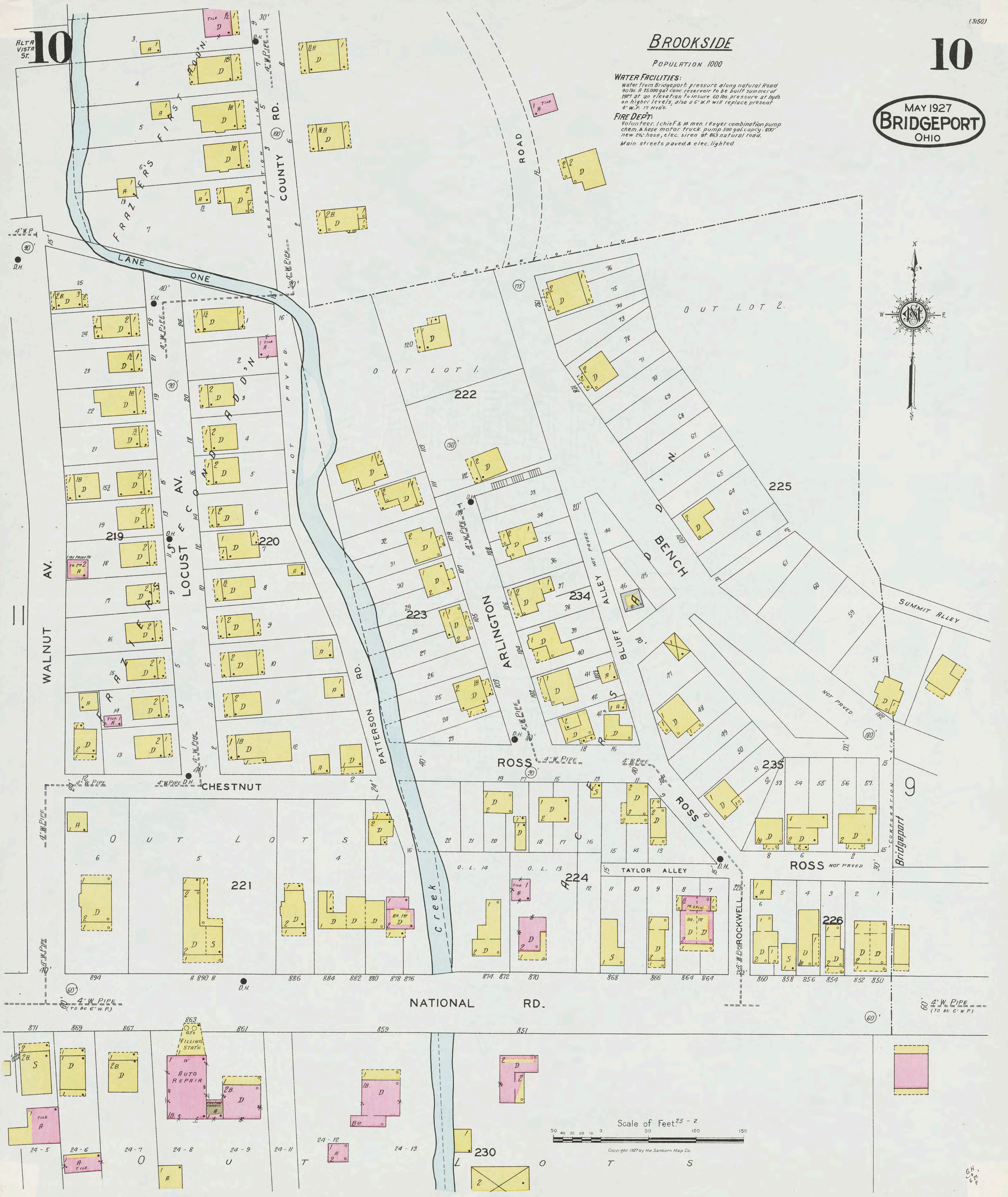
BROOKSIDE

POPULATION 1000

MAY 1927
BRIDGEPORT
OHIO

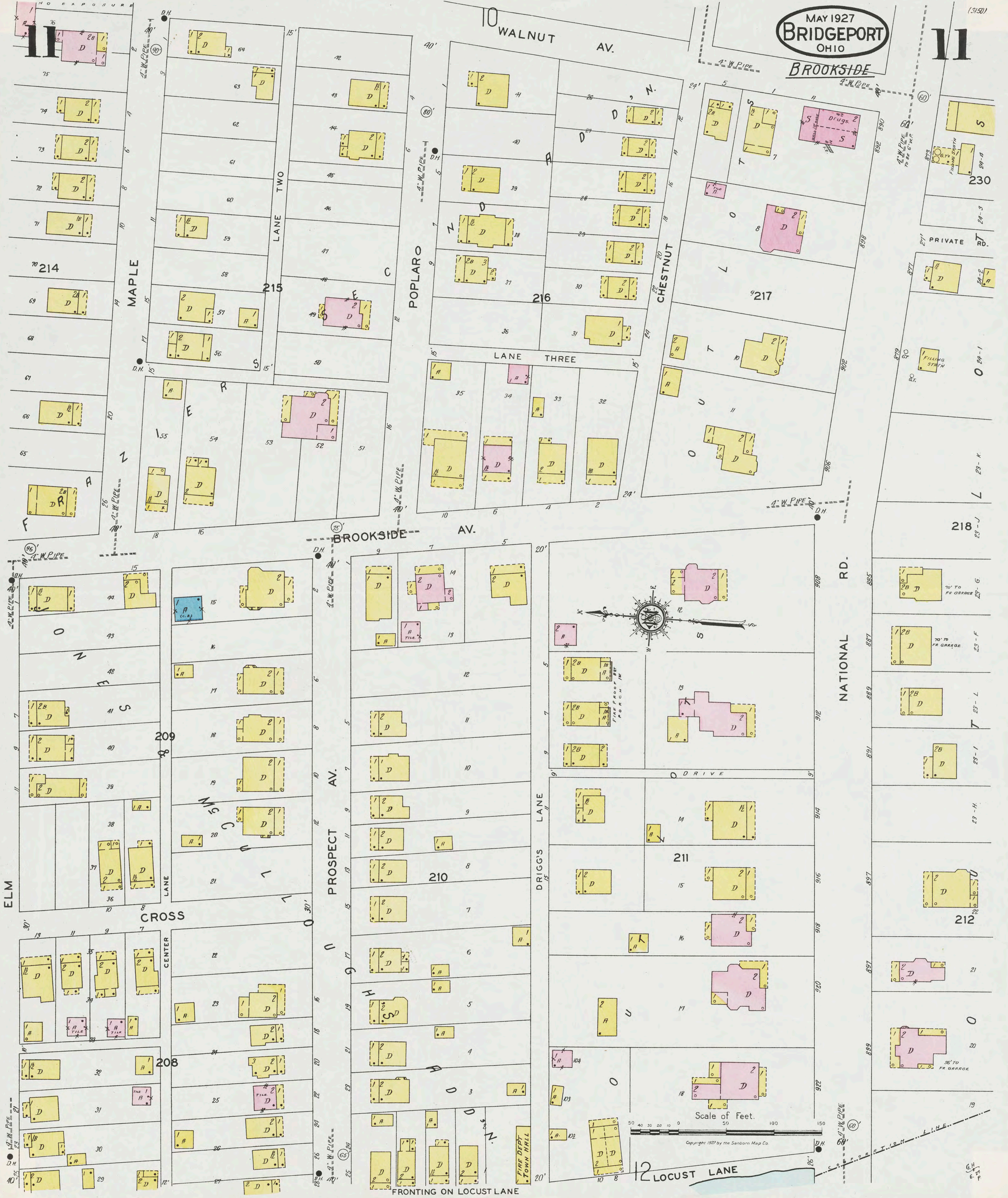
WATER FACILITIES:
Water from Bridgeport pressure along natural Road 90 lbs. A 25,000 gal. conc. reservoir to be built summer of 1927 at an elevation to insure 60 lbs. pressure at hydrants on higher levels; also a 6" W.P. will replace present 4" W.P. in Hyds.

FIRE DEPT.:
Volunteer, 1 chief & 4 men 180er combination pump, chem. & hose motor truck, pump 500 gal. capacity, 800' new 2 1/2" hose, elec. siren at 865 natural road. Main streets paved & elec. lighted.



Copyright 1927 by the Sanborn Map Co.

G.H. CHAP



LORAIN COAL & DOCK COMPANY

WHEELING CREEK MINE

LIGHT & POWER: ELEC. (COMM. CURRENT)
HEAT: STOVES - CHEM. EXTGRS. CRKS & PAIS.
WATCHMAN - NO CLOCK

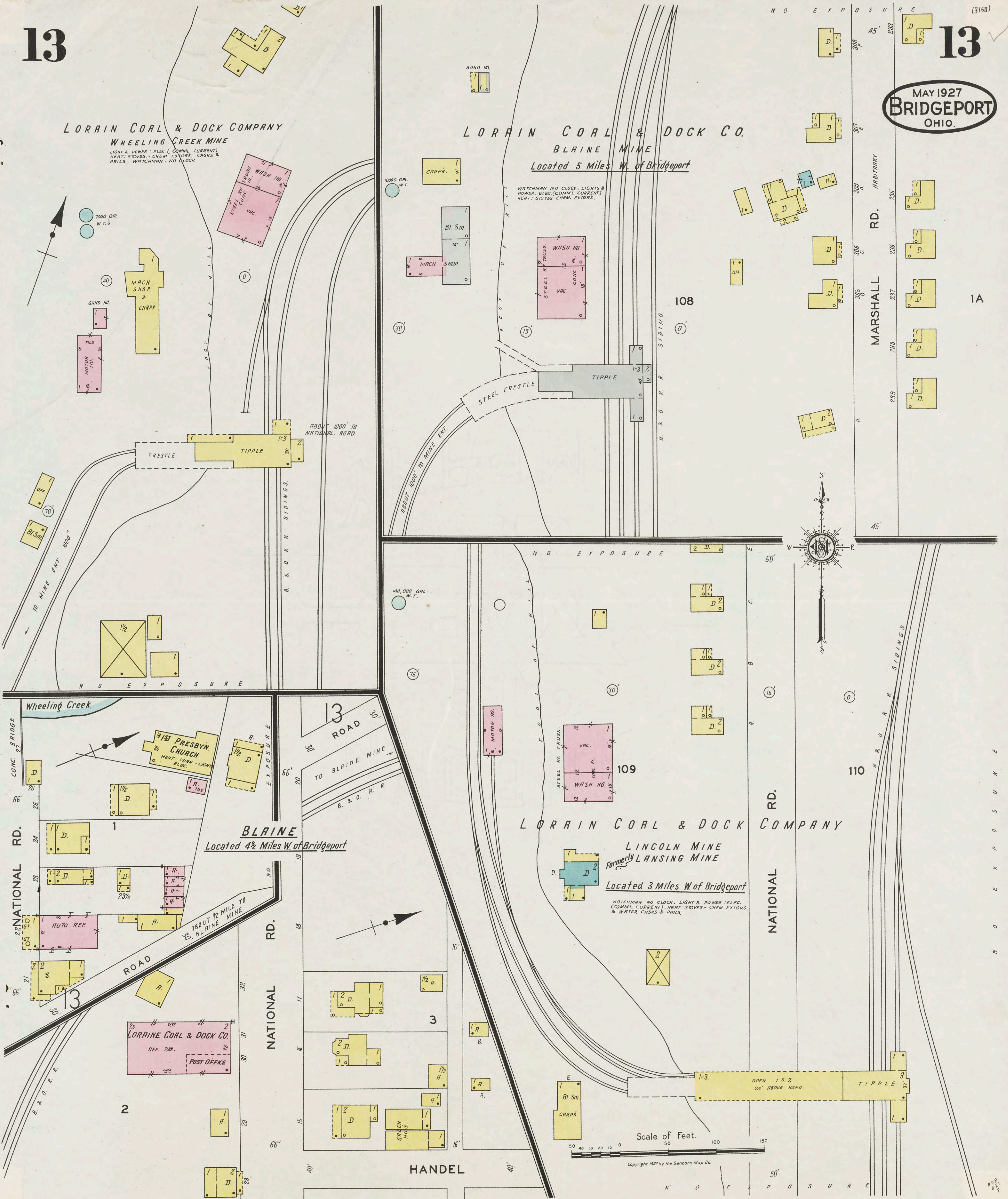
LORAIN COAL & DOCK CO.

BLAINE MINE

Located 5 Miles W. of Bridgeport

WATCHMAN NO CLOCK. LIGHTS & POWER: ELEC. (COMM. CURRENT)
HEAT: STOVES CHEM. EXTGRS.

MAY 1927
BRIDGEPORT
OHIO.



N O E X P O S U R E (3150)

MARSHALL RD. ARBITRARY

NATIONAL RD.

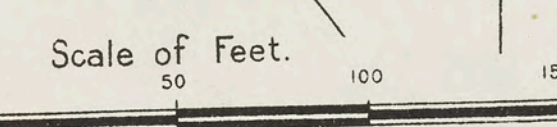
1A

N O E X P O S U R E

108

109

110



Copyright 1927 by the Sanborn Map Co.

N O E X P O S U R E

APP. 6 1/2 P.