

MARTINS FERRY

BELMONT COUNTY



CO. LIMITED

SANBORN-PERRIS

MAP

11 BROADWAY, NEW YORK

SCALE 50 FT TO AN INCH.

12830

May 1900

Copyright 1900, by the Sanborn-Perris Map Co. Limited.

Population 8000, Prev. Winds W. & S.W.

WATER FACILITIES. Gravity and direct pressure system of water works. Reservoir situated 1/2 miles North of Post Off. capacity 2 1/2 million galls. elevation 230 ft. above average grade of city, giving a pressure of 80 to 130 lbs. per sq. inch. One Worthington triple-expansion Steam Pump, 15" x 23" x 34" x 17" x 24", cap'y 4 1/2 million galls, and one Hughes Compound Duplex Steam Pump, 20" x 32" x 36", cap'y 2 1/2 million galls, per 24 hours. 1 1/4 Miles of distributing mains, 4" to 12" diam. 12" & 20" Mains leading from pump ho. to reservoir. 88 Double Hydrants. Average daily consumption 1,700,000 galls.

FIRE DEPARTMENT. Volunteer, three organized companies, 67 men. Gamewell fire alarm system, 19 boxes. One hook & ladder truck drawn by horses. Two hand hose carts. One hose wagon. 1400' 2 1/2" cotton-rubber lined hose. Streets paved, Lights, electric.

213534
July 3, 1900



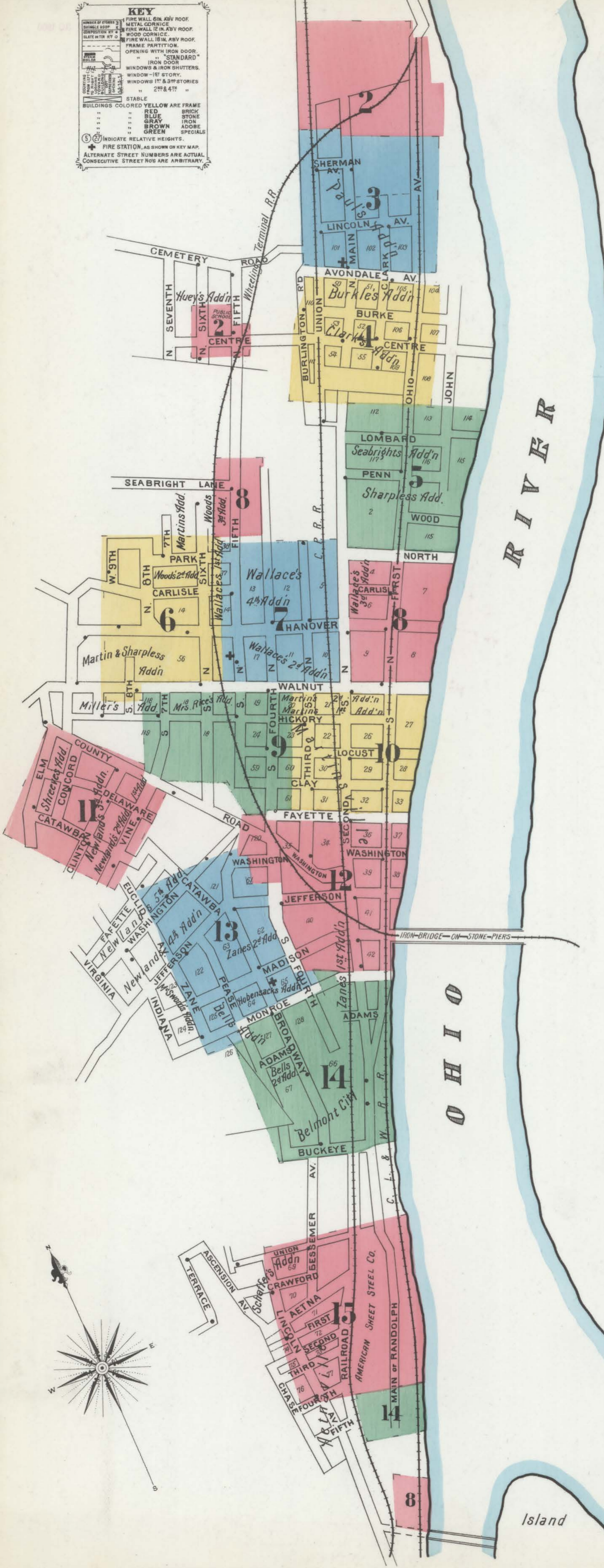
TWO COPIES RECEIVED,
Library of Congress
Office of the
JUN 30 1900
Register of Copyrights

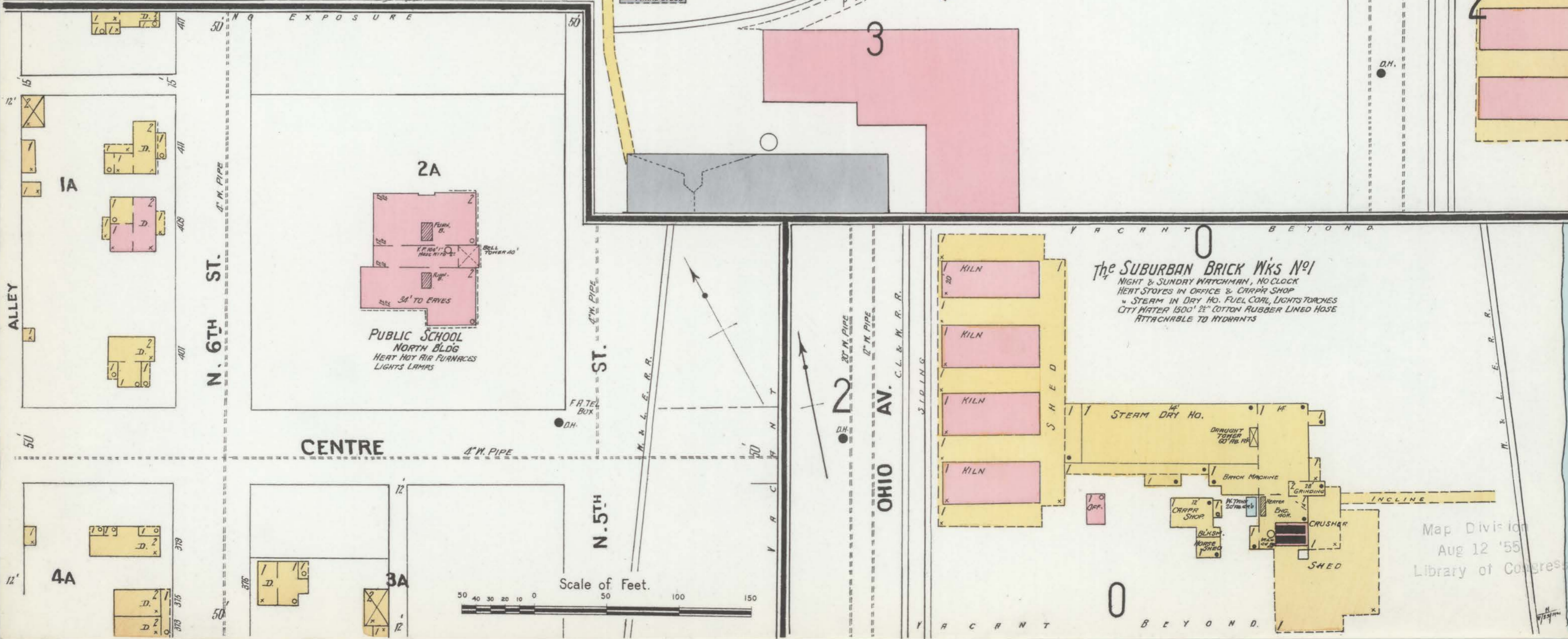
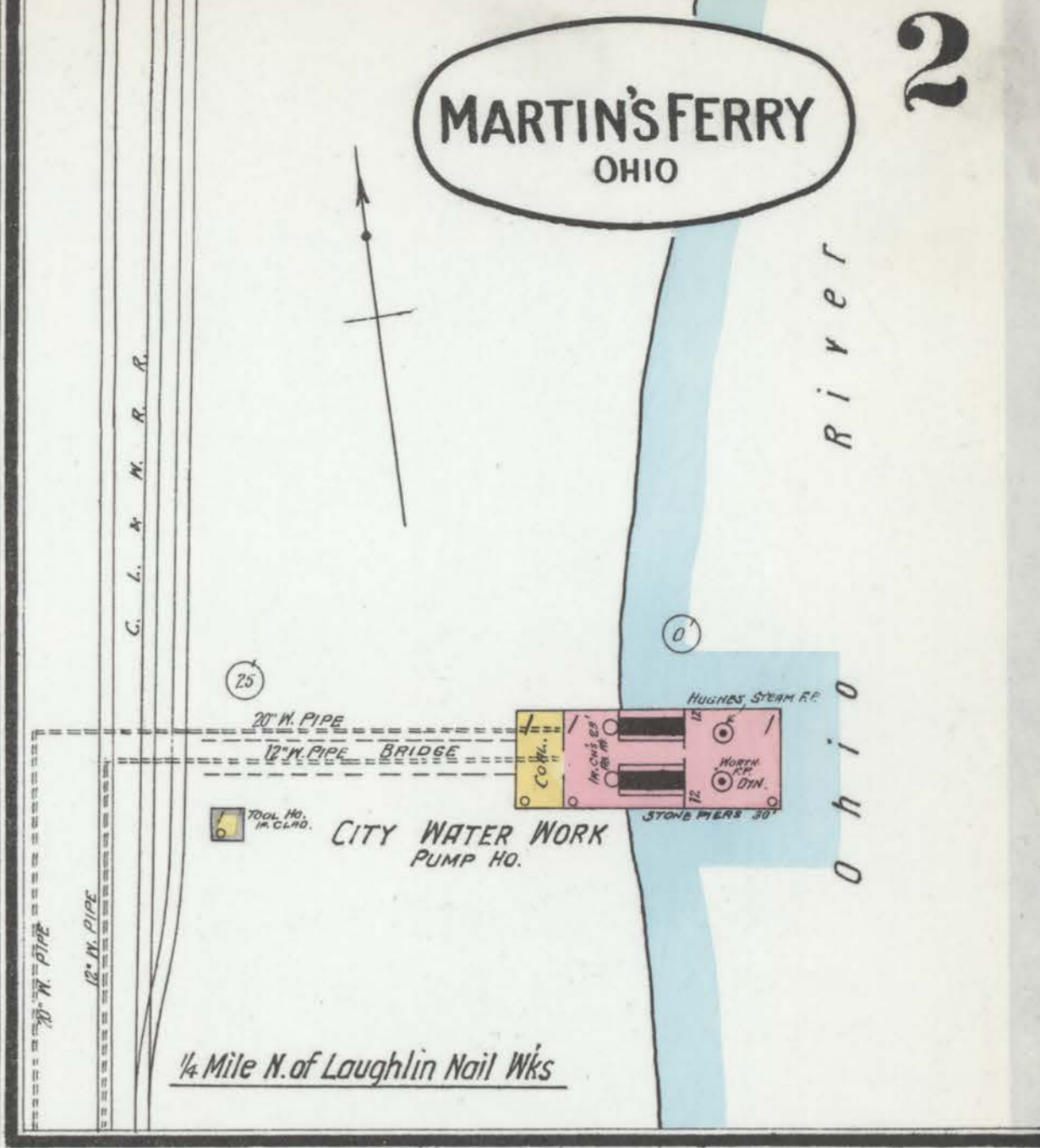
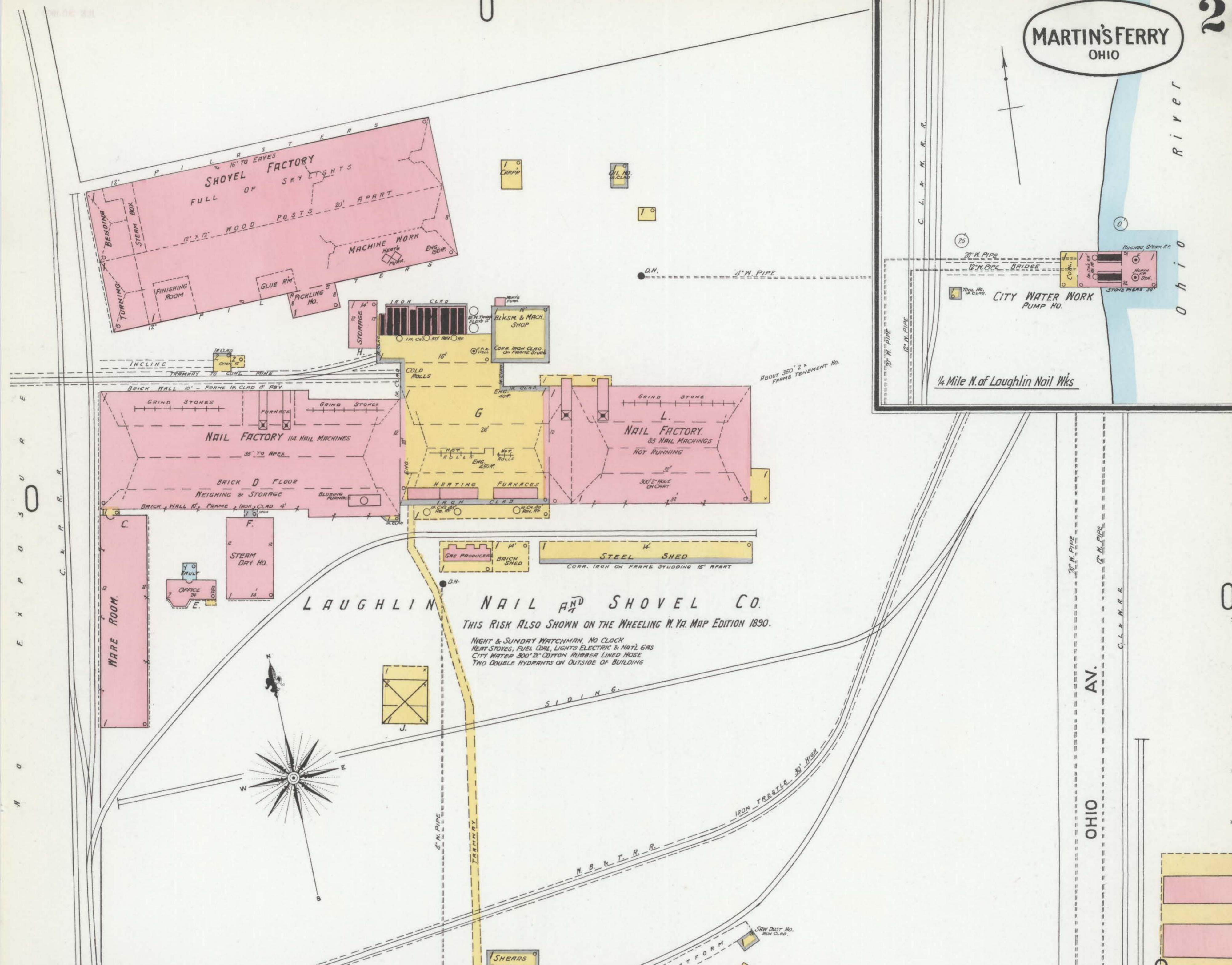
Library of Congress
Two Copies Received
1900
Copyright 1900
SECOND COPY
Delivered to
ORDER DIVISION
SEP 20 1900

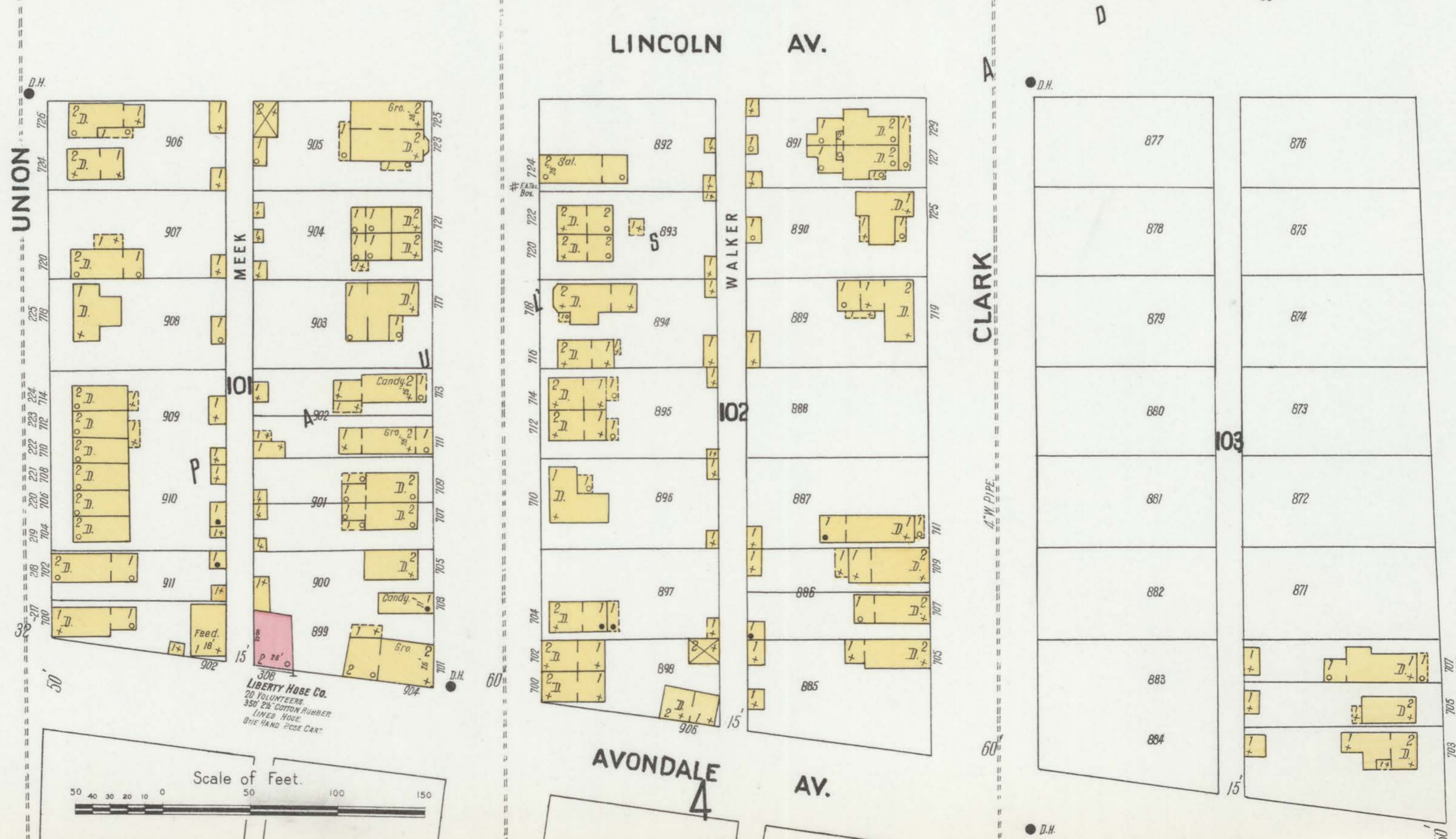
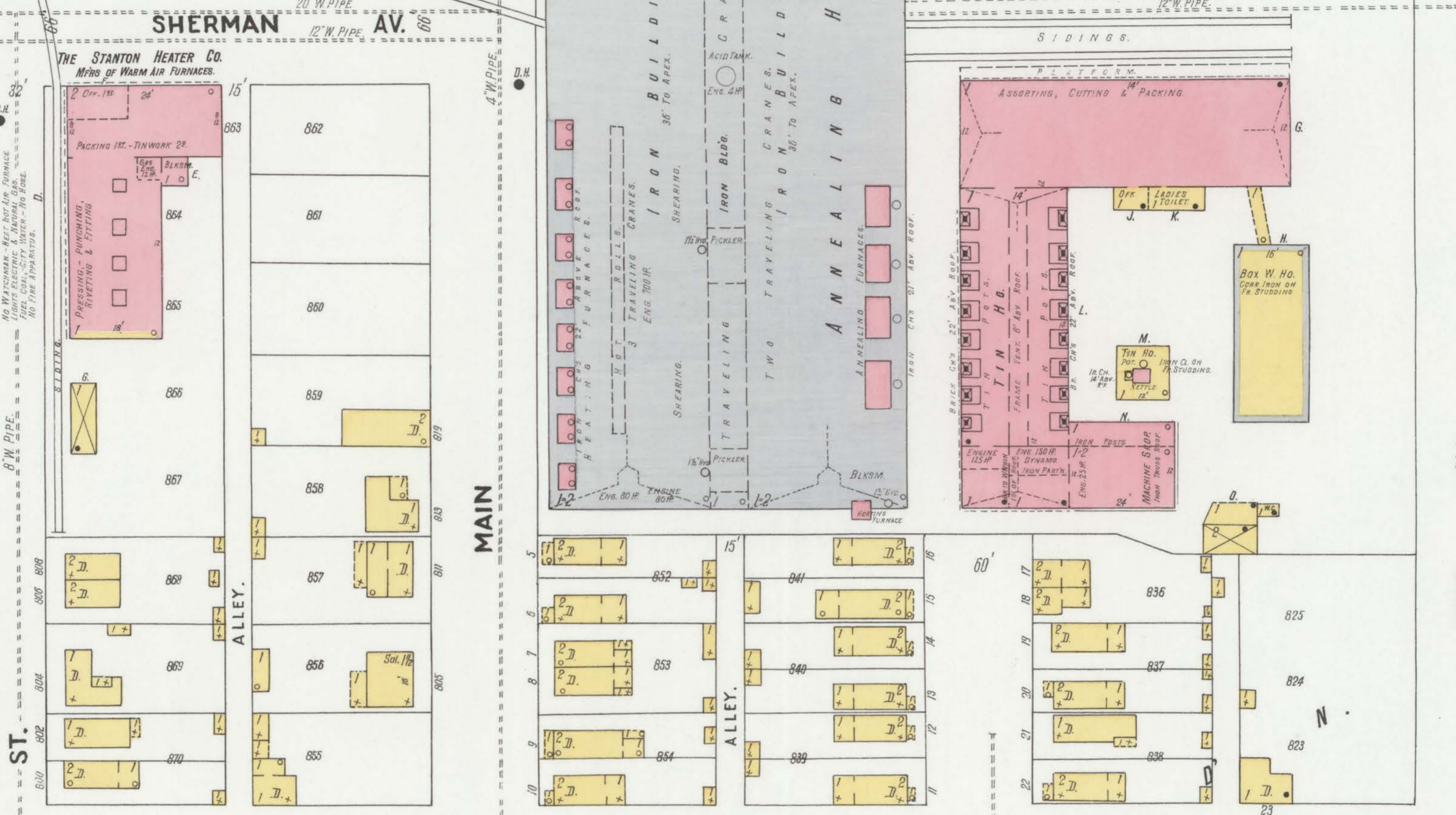
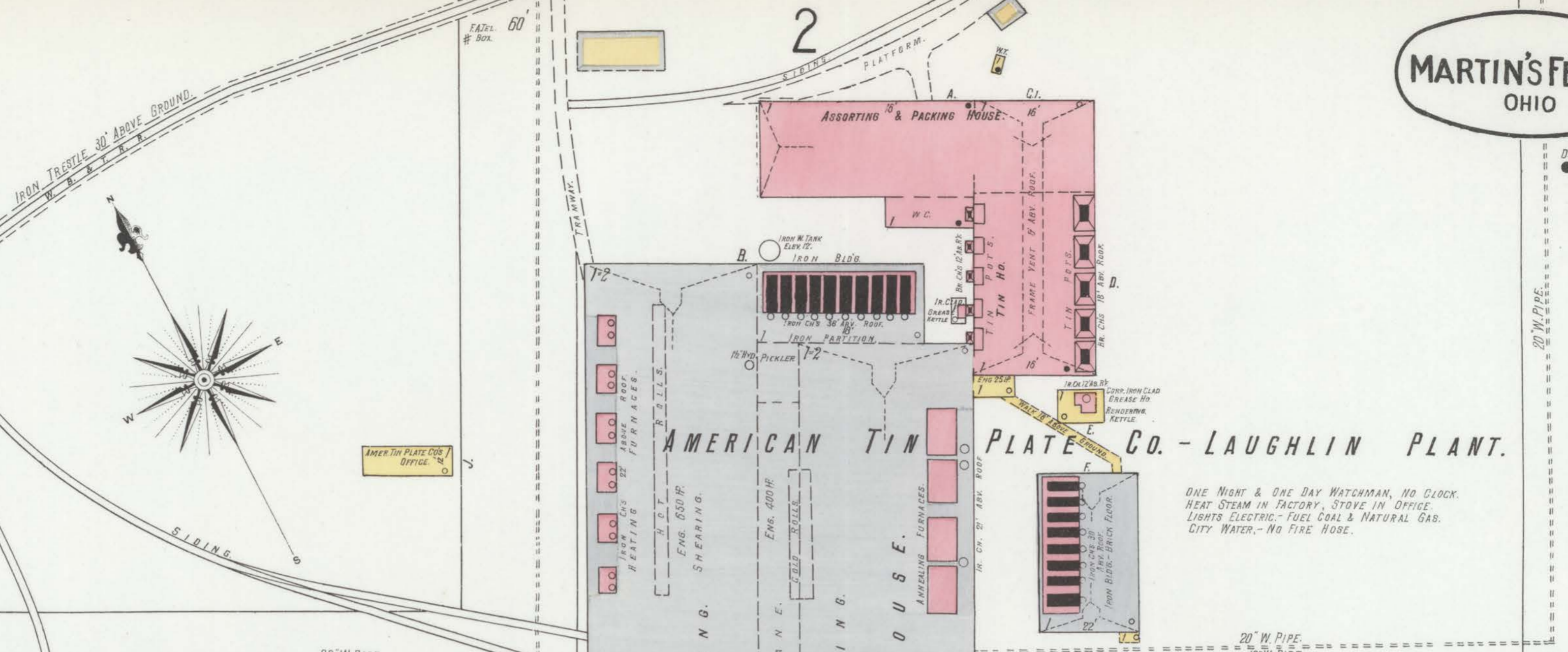
INDEX.

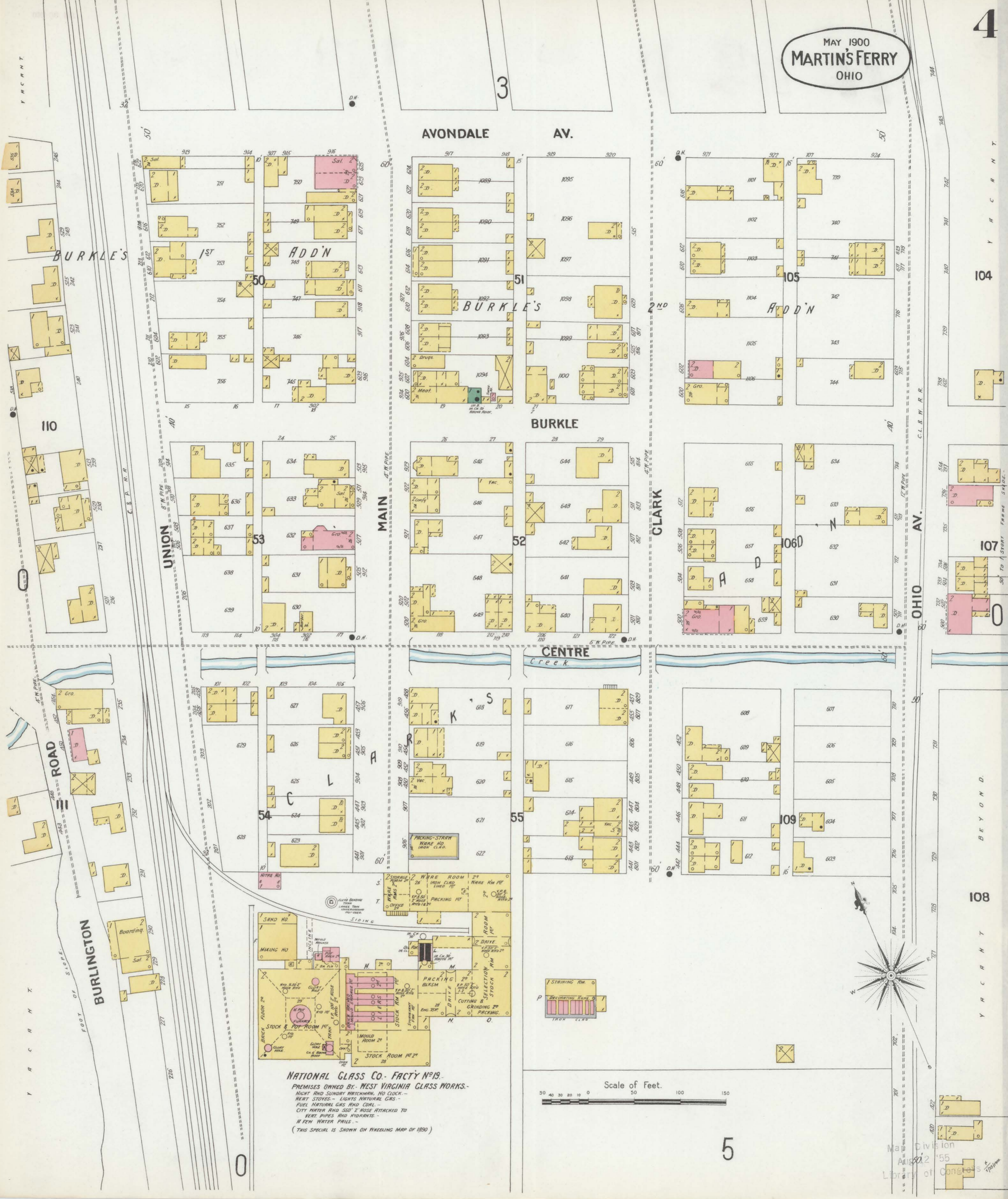
| STREETS. | | M | | Z | |
|------------------------------------|---------------------|-------------------------------|---------|-------------|---------|
| Adams, | 14 | Madison, | 100-121 | Zane, | 700-821 |
| Aetna, at Etnaville, | 15 | " | 200-230 | " | " |
| Avondale Ave., | 100-320 | Mahn, | 400-625 | " | " |
| " | 101-321 | " | 700-931 | " | " |
| " | " | " | " | " | " |
| Bessemer Ave., at Etnaville, | 15 | " | " | " | " |
| Broadway, | 700-821 | Market, at Tiltonville, | 100-112 | " | " |
| " | 900-1061 | Monroe, | 200-221 | " | " |
| Buckeye, | 14 | " | 301-521 | " | " |
| Burke, | 4 | " | 400-520 | " | " |
| Burlington Road, | 3 & 4 | " | 600-703 | " | " |
| " | " | Mound, at Tiltonville, | " | " | " |
| Carlisle, | 100-135 | " | " | " | " |
| " | 500-509 | " | " | " | " |
| " | 510-915 | " | " | " | " |
| Catawba, | 11 & 13 | " | " | " | " |
| Center, | 4 | Ohio Ave., | 300-419 | " | " |
| Clark, | 400-621 | " | 420-625 | " | " |
| " | 700-815 | " | 700-931 | " | " |
| Clay, | 1-308 | " | " | " | " |
| " | 309-324 | " | " | " | " |
| Concord, | 11 | " | " | " | " |
| County Road, | 605-709 | " | " | " | " |
| " | 618-710 | " | " | " | " |
| " | 711-840 | " | " | " | " |
| Crawford, at Etnaville, | 15 | " | " | " | " |
| " | " | " | " | " | " |
| Delaware, | 11 | " | " | " | " |
| " | " | " | " | " | " |
| Eighth, N., | 1-140 | " | " | " | " |
| " | 1-40 | " | " | " | " |
| Elm, | 400-635 | " | " | " | " |
| Euclid, | 13 | " | " | " | " |
| " | " | " | " | " | " |
| Fayette, | 1-309 | " | " | " | " |
| " | 2-308 | " | " | " | " |
| " | 310-324 | " | " | " | " |
| " | 610-634 | " | " | " | " |
| Fifth, N., | 1-210 | " | " | " | " |
| " | 211-350 | " | " | " | " |
| " | 1-36 | " | " | " | " |
| " | 100-325 | " | " | " | " |
| " | 500-515 | " | " | " | " |
| " | 517-620 | " | " | " | " |
| First, N., | 1-124 | " | " | " | " |
| " | 200-235 | " | " | " | " |
| " | 1-40 | " | " | " | " |
| " | 100-421 | " | " | " | " |
| " | 500-817 | " | " | " | " |
| " | 1-54 | " | " | " | " |
| Fourth, N., | 1-54 | " | " | " | " |
| " | 51-97 | " | " | " | " |
| " | 1-46 | " | " | " | " |
| " | 100-417 | " | " | " | " |
| " | 500-611 | " | " | " | " |
| " | 612-740 | " | " | " | " |
| " | 613-821 | " | " | " | " |
| " | 900-1061 | " | " | " | " |
| " | at Etnaville, | " | " | " | " |
| " | " | " | " | " | " |
| Hanover, | 1-140 | " | " | " | " |
| " | 200-510 | " | " | " | " |
| " | 511-835 | " | " | " | " |
| Hickory, | 100-308 | " | " | " | " |
| " | 309-716 | " | " | " | " |
| " | " | " | " | " | " |
| Jefferson, | 100-241 | " | " | " | " |
| " | 400-801 | " | " | " | " |
| John, | 5 | " | " | " | " |
| " | " | " | " | " | " |
| Lean, | 3 | " | " | " | " |
| Lincoln Ave., | 9 | " | " | " | " |
| " | at Etnaville, | " | " | " | " |
| Loenst, | 1-308 | " | " | " | " |
| " | 309-424 | " | " | " | " |
| Lombard, | 5 | " | " | " | " |
| " | " | " | " | " | " |

* Indicates only one side of Street shown.









AVONDALE AV.

AV.

BURKLE'S

1ST

ADD'N

BURKLE'S

ADD'N

BURKLE

MAIN

CLARK

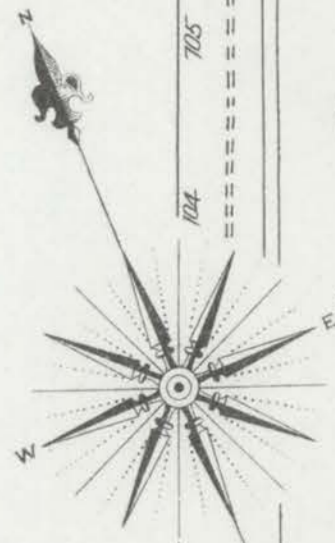
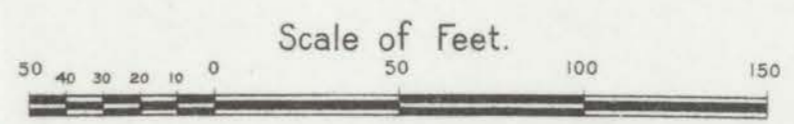
OHIO AV.

CENTRE CREEK

ROAD

BURLINGTON

NATIONAL GLASS CO. FACTY N^o 19.
PREMISES OWNED BY - WEST VIRGINIA GLASS WORKS.
NIGHT AND SUNDAY WATCHMAN, NO CLOCK -
HEAT STOVES - LIGHTS NATURAL GAS -
FUEL NATURAL GAS AND COAL -
CITY WATER AND 3/4" HOSE ATTACHED TO
VENT PIPES AND WYTHRINS -
A FEW WATER PAILS -
(THIS SPECIAL IS SHOWN ON WHEELING MAP OF 1890)



4

5

112

113

114

LOMBARD

PENN

SHARPLES

ADD'N

VACANT

JOHN

115

WOODS

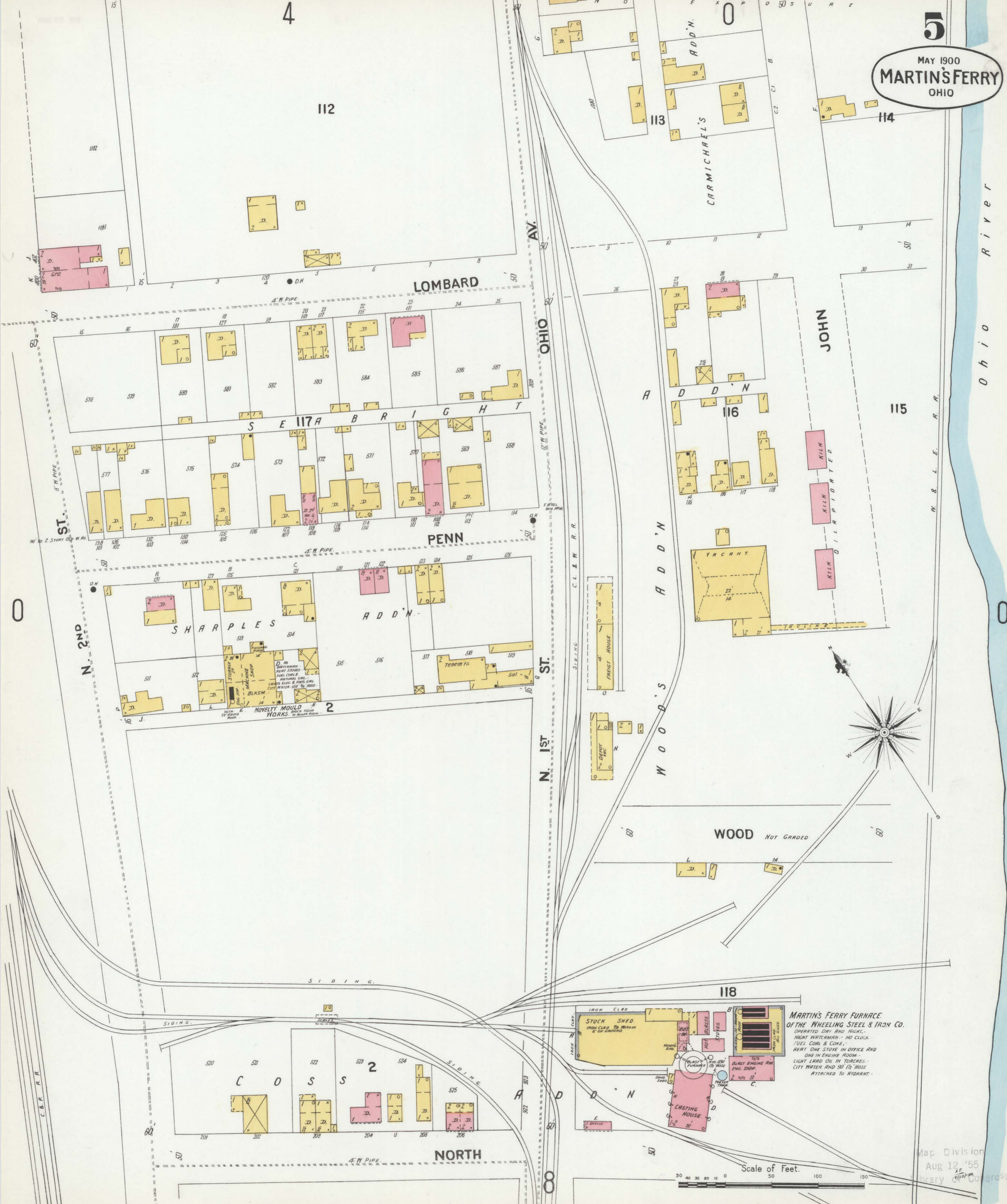
WOOD NOT GRADED

118

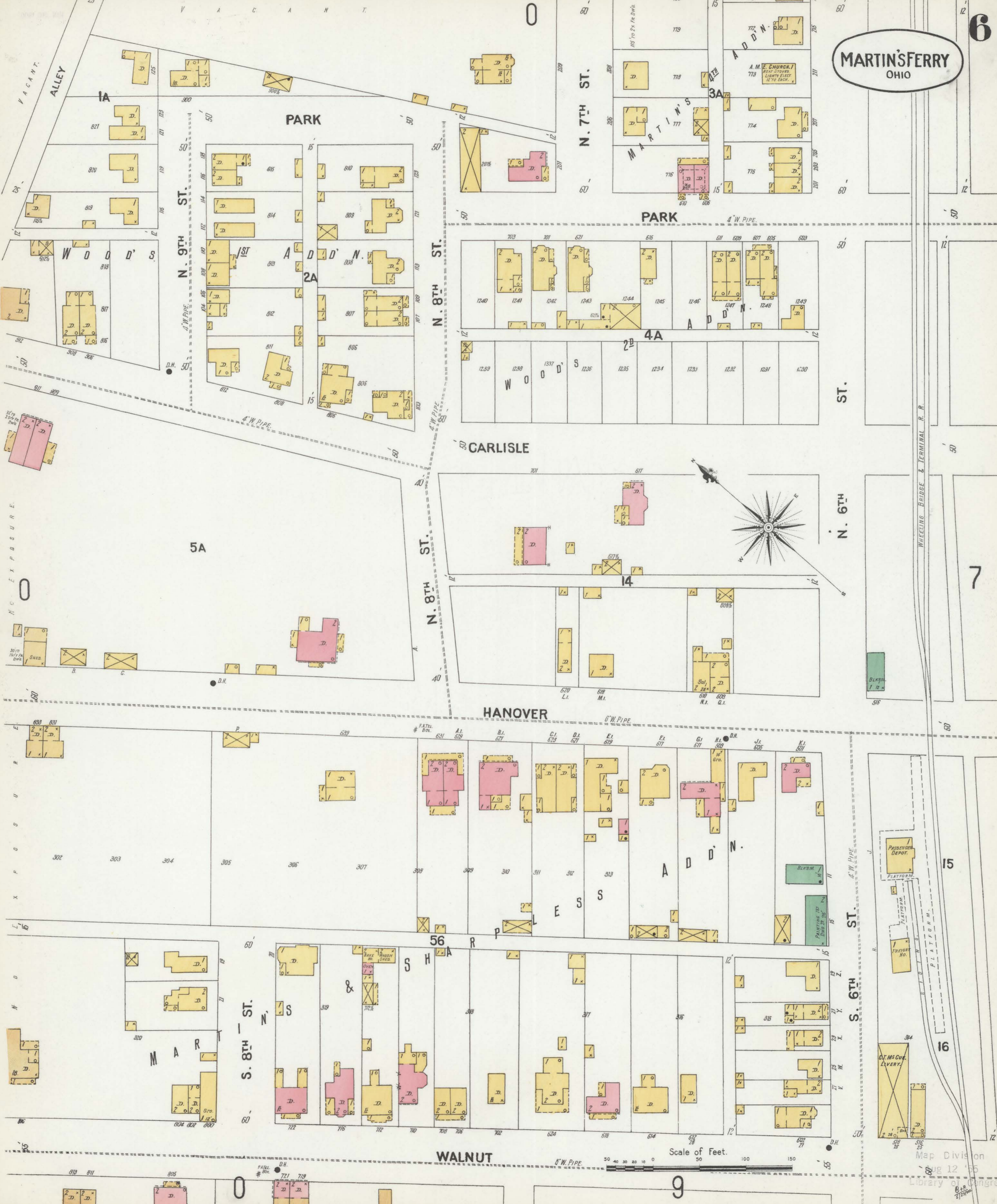
MARTIN'S FERRY FURNACE
 OF THE WHEELING STEEL & IRON CO.
 OPERATED DAY AND NIGHT.
 NIGHT WATCHMAN - NO CLOCK.
 FUEL COAL & COKE.
 HEAT ONE STORE IN OFFICE AND
 ONE IN ENGINE ROOM.
 LIGHT LAMP ON IN TORCHES -
 CITY WATER AND 90' HOSE
 ATTACHED TO HYDRANT.

NORTH

Scale of Feet.



MARTIN'S FERRY OHIO



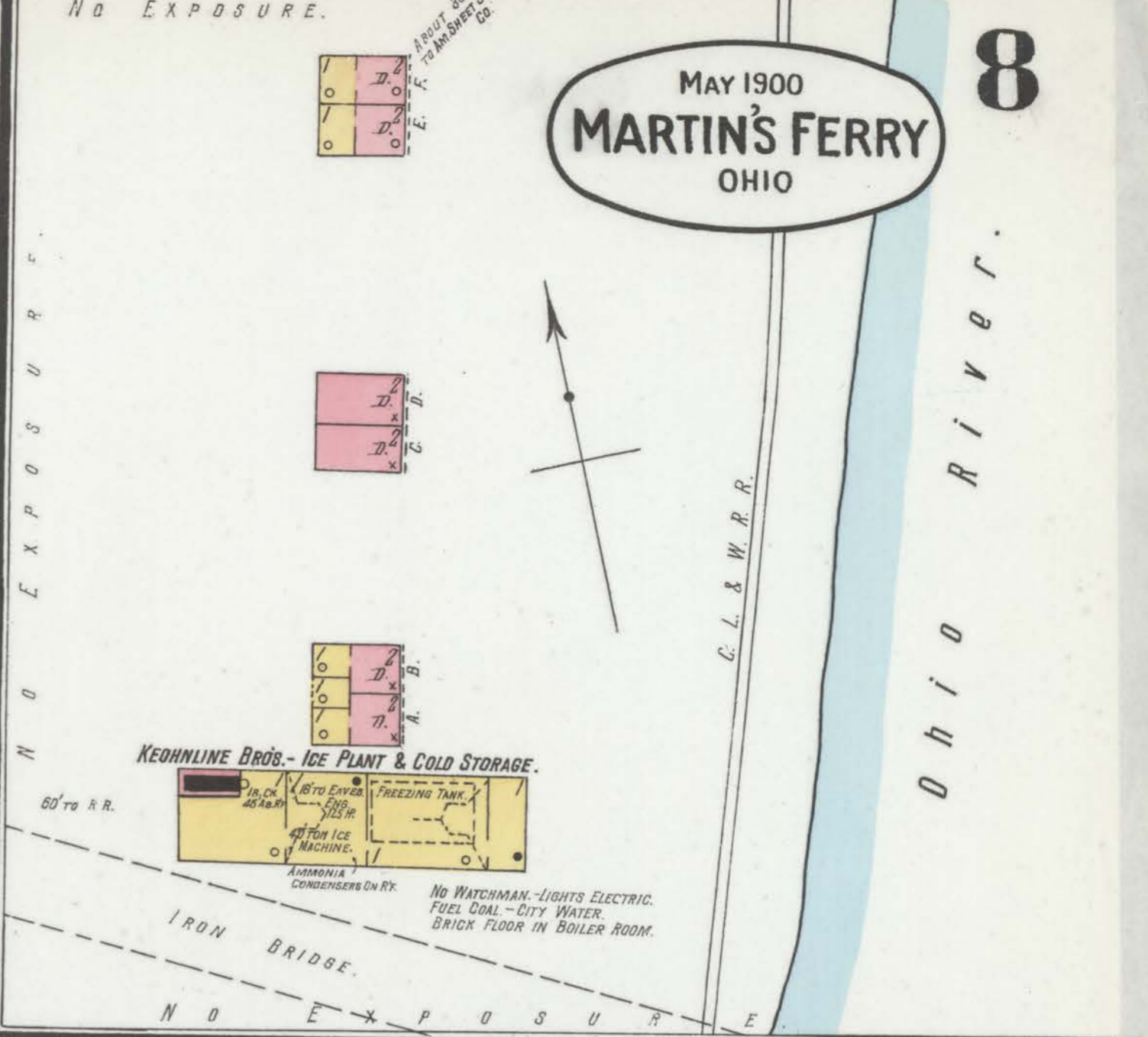
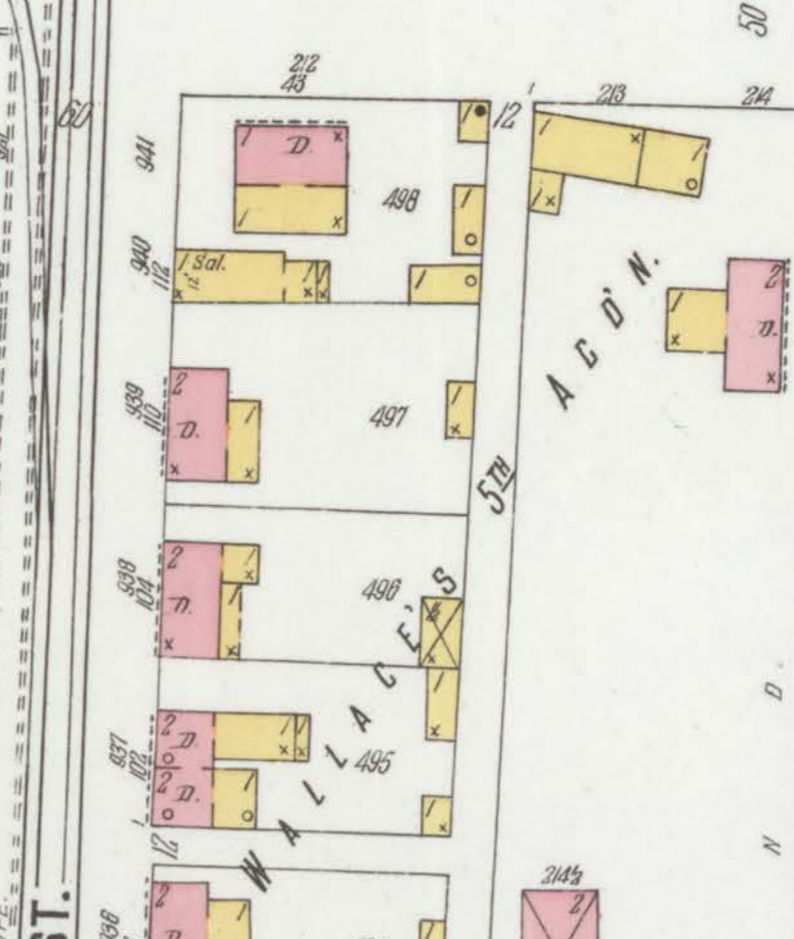
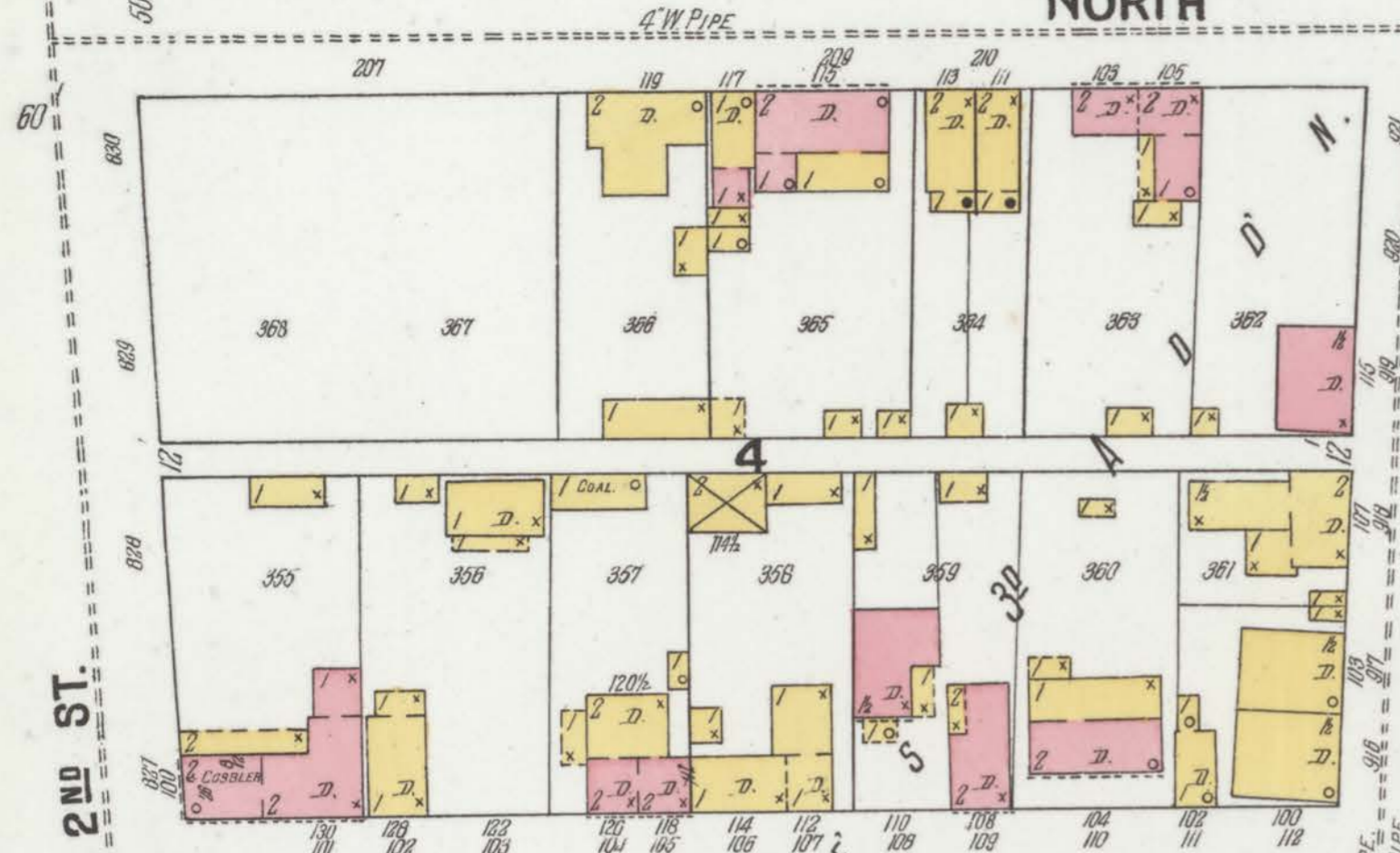
Note: The Risks on Each Side of 1st Street From Walnut to North Are Shown on WHEELING MAP of 1890.

MAY 1900
MARTIN'S FERRY
OHIO

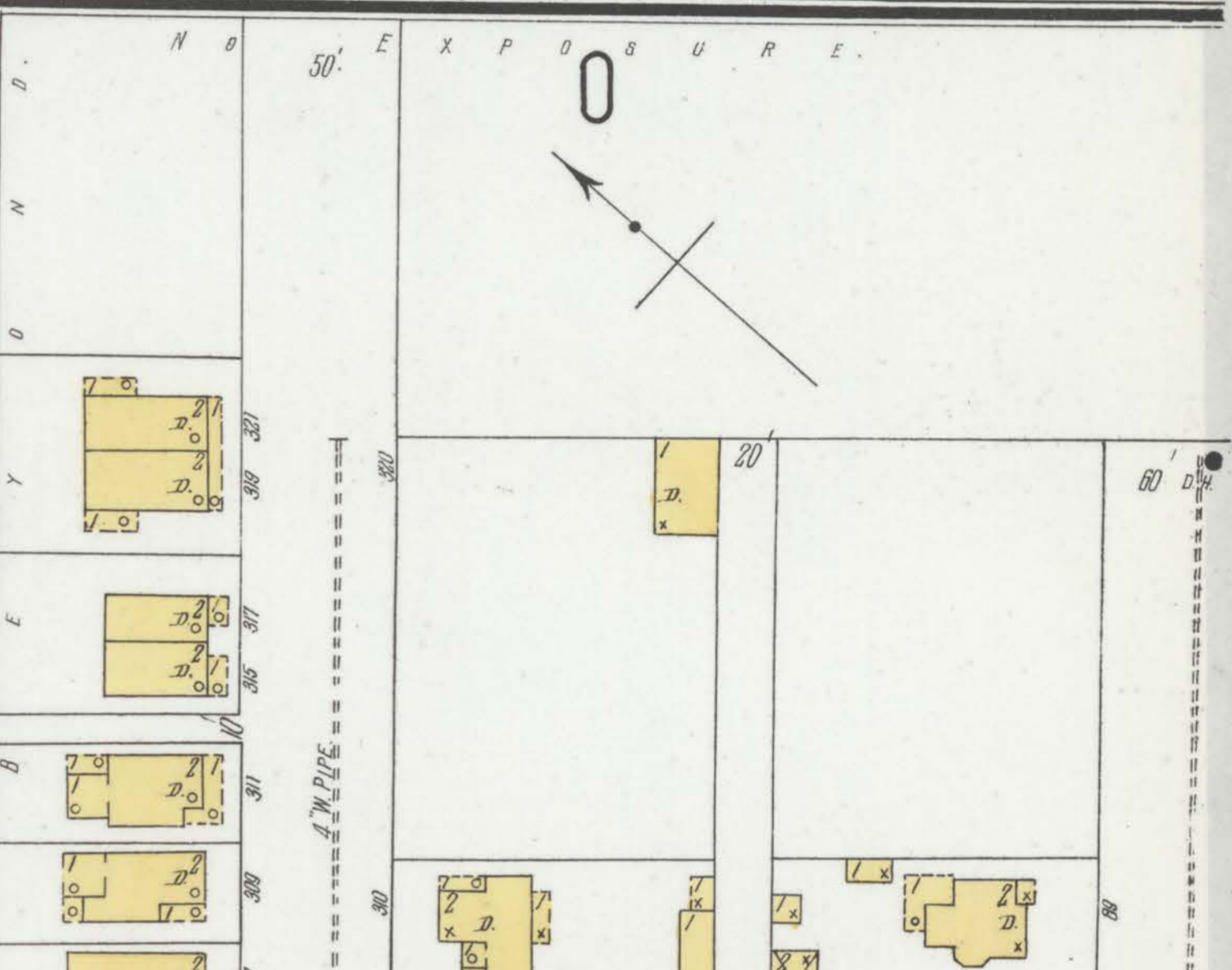
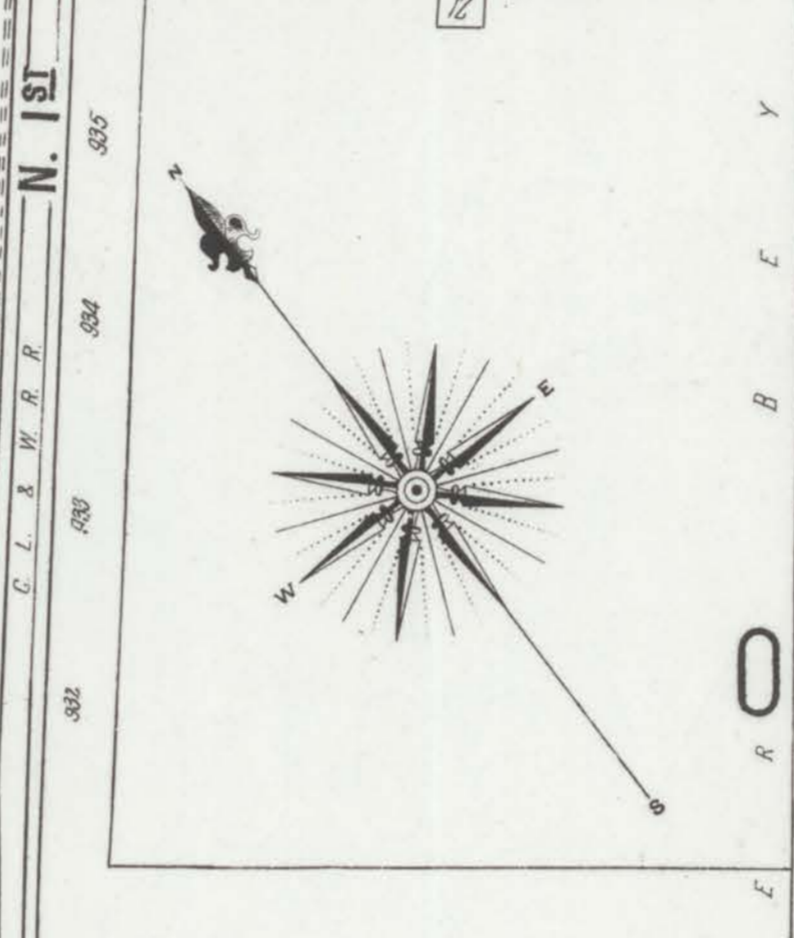
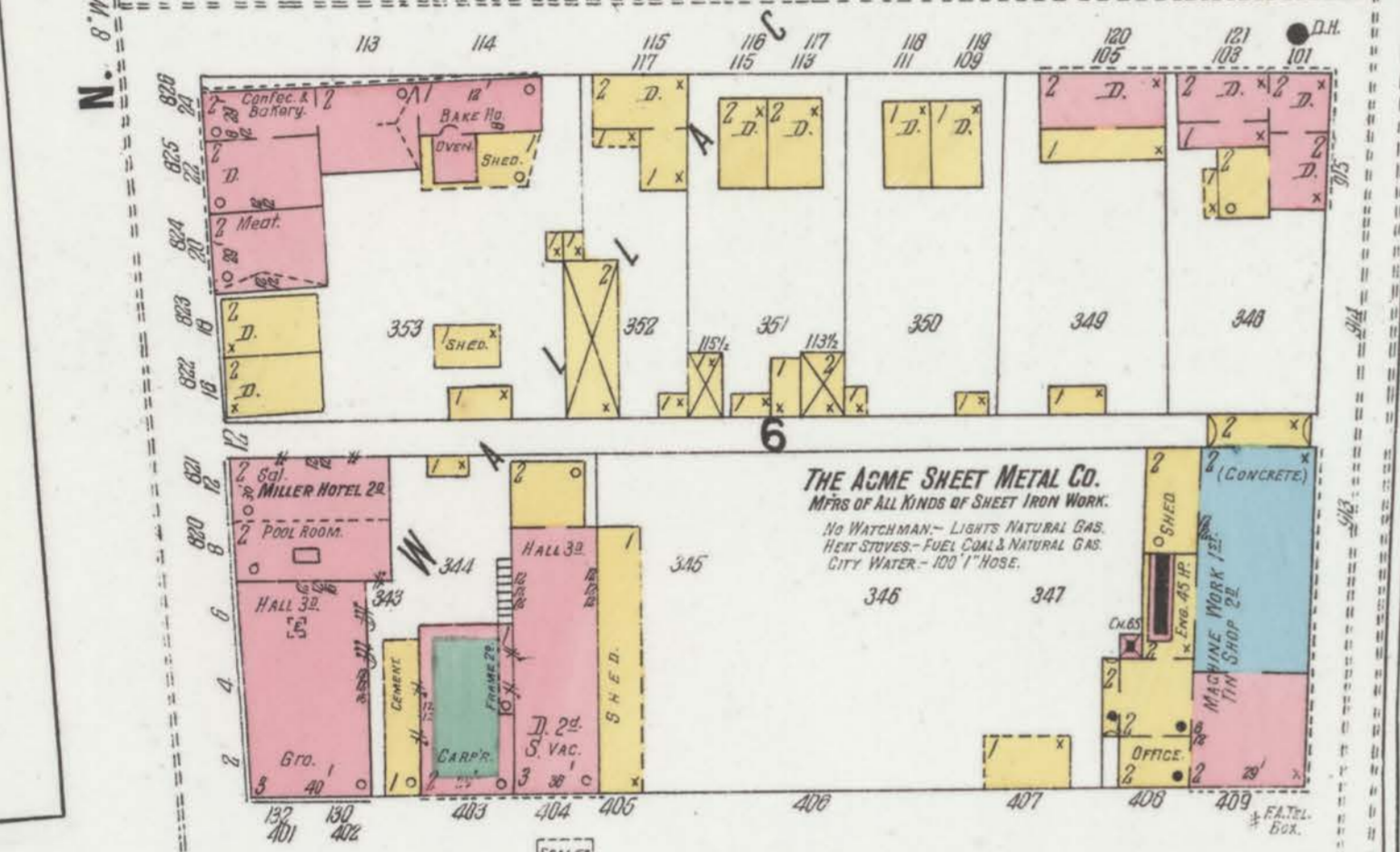
8

5

NORTH



CARLISLE



THE ACME SHEET METAL CO.
MFGS OF ALL KINDS OF SHEET IRON WORK.
No WATCHMAN - LIGHTS NATURAL GAS.
HEAT STOVES - FUEL COAL & NATURAL GAS.
CITY WATER - 100' HOSE.

CITY ELECTRIC LIGHT PLANT.
2-250 V. A.C. DYNAMOS
1-90 K.W. DYNAMO
2-45 K.W. DYNAMOS
FUEL COAL - CITY WATER.
30' HOSE IN BAR ROOM.

THE SCOTT LUMBER CO.
LUMBER YARD.

COOPER SHOP
COOPER STUFF & BARREL STORAGE.

FORMERLY H. WARWOOD - IRON TOOL WORKS.

ENTERPRISE GLASS FACTORY.
No WATCHMAN - LIGHTS NATURAL GAS.
No HEAT - FUEL NATURAL GAS.

WALNUT

Scale of Feet.

10

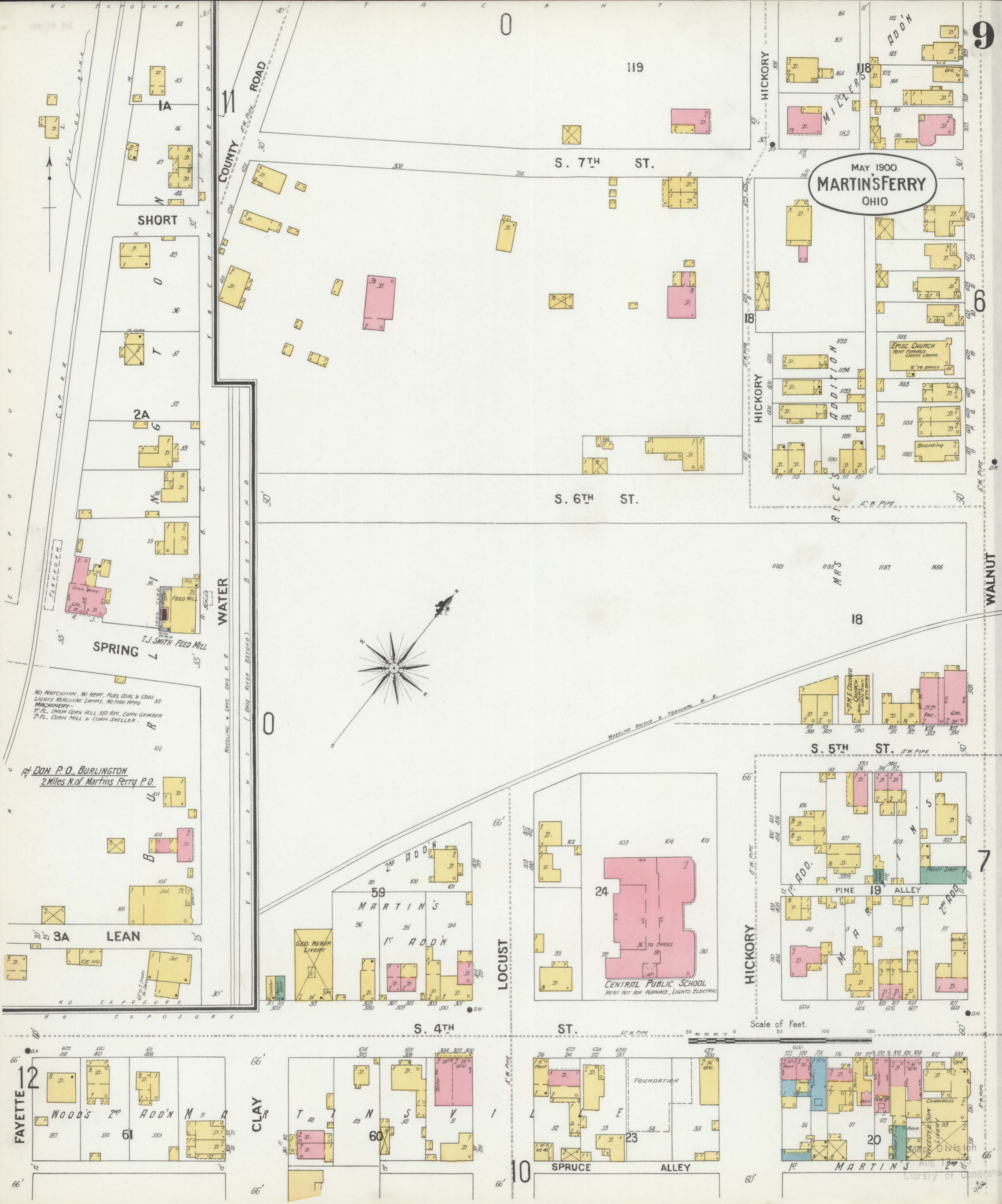
N. 4TH ST.

N. 5TH ST.

ALLEY

Aug 12 1900
City of Cincinnati

MAY 1900
MARTIN'S FERRY
OHIO



NO WATCHMAN, NO HEAT, FUEL COAL & COBS
LIGHTS KEROSENE LAMPS, NO FIRE ALARMS
MACHINERY
P.F.L. CRUSH CORN ROLL, 350 REV., CORN GRINDER
2-F.L. CORN MILL & CORN SHELLER

At DON P.O. BURLINGTON
2 Miles N. of Martins Ferry P.O.

WHEELING BRIDGE & TERMINAL R.R.

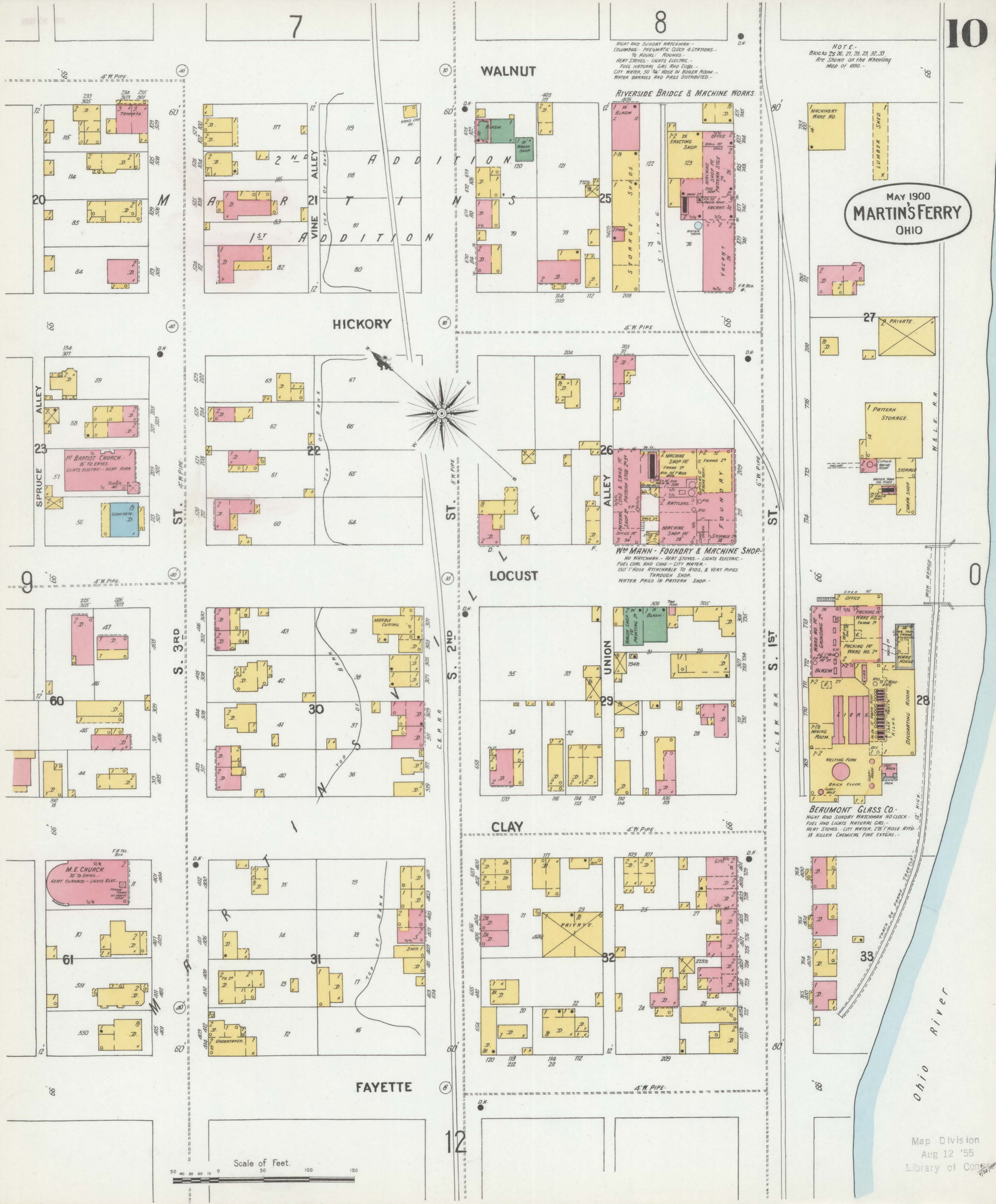
CENTRAL PUBLIC SCHOOL
HEAT HOT AIR FURNACE, LIGHTS ELECTRIC

EPISC CHURCH
HEAT FURNACE
LIGHTS LAMPS
16' TO EAVES

Scale of Feet.
0 50 100 150 200

NOTE -
Blocks 25, 26, 27, 28, 29, 32, 33
Are shown on the Wheeling
Map of 1890.

MAY 1900
MARTIN'S FERRY
OHIO

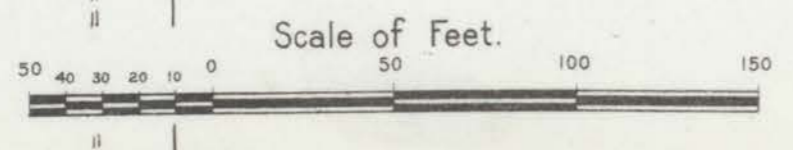


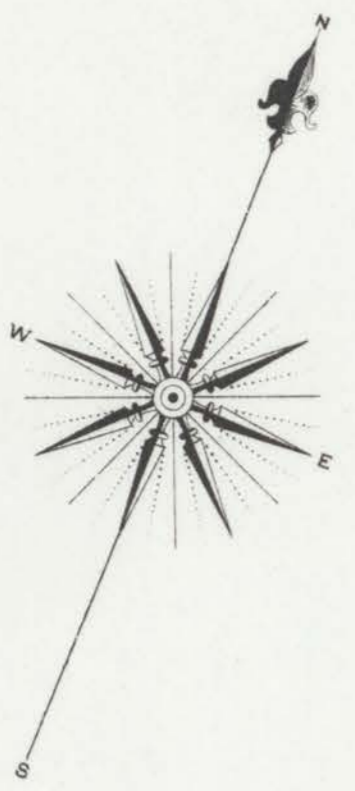
NIGHT AND SUNDAY WATCHMAN -
COLUMBUS - PNEUMATIC CLOCK 4 STATIONS -
1/2 HOURLY ROUNDS -
HEAT STOVES - LIGHTS ELECTRIC -
FUEL NATURAL GAS AND COAL -
CITY WATER, 50' HOSE IN BOILER ROOM -
WATER BARRELS AND PAILS DISTRIBUTED -

RIVERSIDE BRIDGE & MACHINE WORKS.

WM MANN - FOUNDRY & MACHINE SHOP.
NO WATCHMAN - HEAT STOVES - LIGHTS ELECTRIC -
FUEL COAL AND COKE - CITY WATER -
150' HOSE ATTACHABLE TO HYDS. & VERT PIPES
THROUGH SHOP -
WATER PAILS IN PATTERN SHOP -

BEAUMONT GLASS CO.
NIGHT AND SUNDAY WATCHMAN NO CLOCK -
FUEL AND LIGHTS NATURAL GAS -
HEAT STOVES - CITY WATER, 2 1/2' HOSE ATT -
10 KILLER CHEMICAL FIRE EXTS. -





0

IA

0

11

40'

0

0

0

0

9

0

0

CLINTON

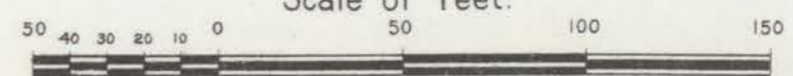
VINE

CATAWBA

DELAWARE

COUNTY ROAD

Scale of Feet.



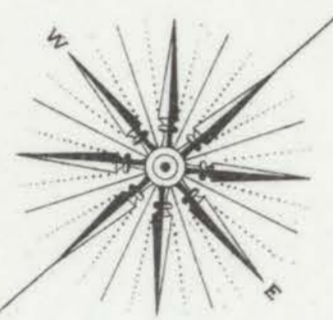
MARTIN'S FERRY OHIO

WASHINGTON

13

S. 4TH ST.

B I G G E R



40

MADISON

14

ZANES

ADD'N

JEFFERSON

WASHINGTON

The BELMONT BREWING CO.
NIGHT & SUNDAY WATCHMAN, NO CLOCK
HEAT STEAM, FUEL COAL, LIGHTS ELECTRIC &
LARD OIL IN BREWERS LANTERNS
CITY WATER, 300' H. & 100' HOSE
600 FT. BALANCE ATTACHABLE TO PIPES & HYD. TUBS. BREWERY
3 WATER TANKS 400 GAL. SUPPLIED BY N.B.S. DEEP WELL &
BY COOK DEEP WELL PUMPS

FAYETTE

10

S. 2ND ST.

FLASH YARD

WASHINGTON

MONROE

42

MADISON

S. 1ST ST.

S. ST.

MATT McDERMOTT
OIL WELL DRILLING WORKS
NO WATCHMAN, HEAT STEAM, FUEL COAL
LIGHTS ELECTRIC, 60' H. WATER & PAULS
CITY WATER & 30' HOSE

36

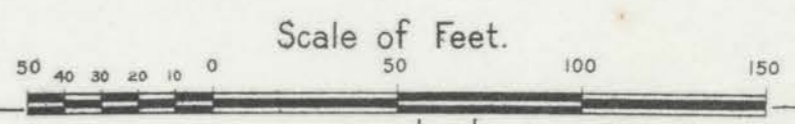
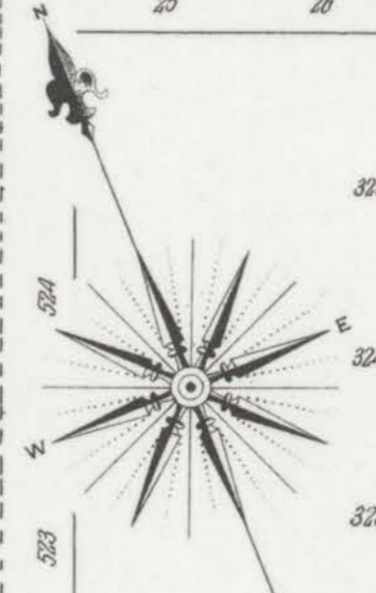
Scale of Feet.

38

37

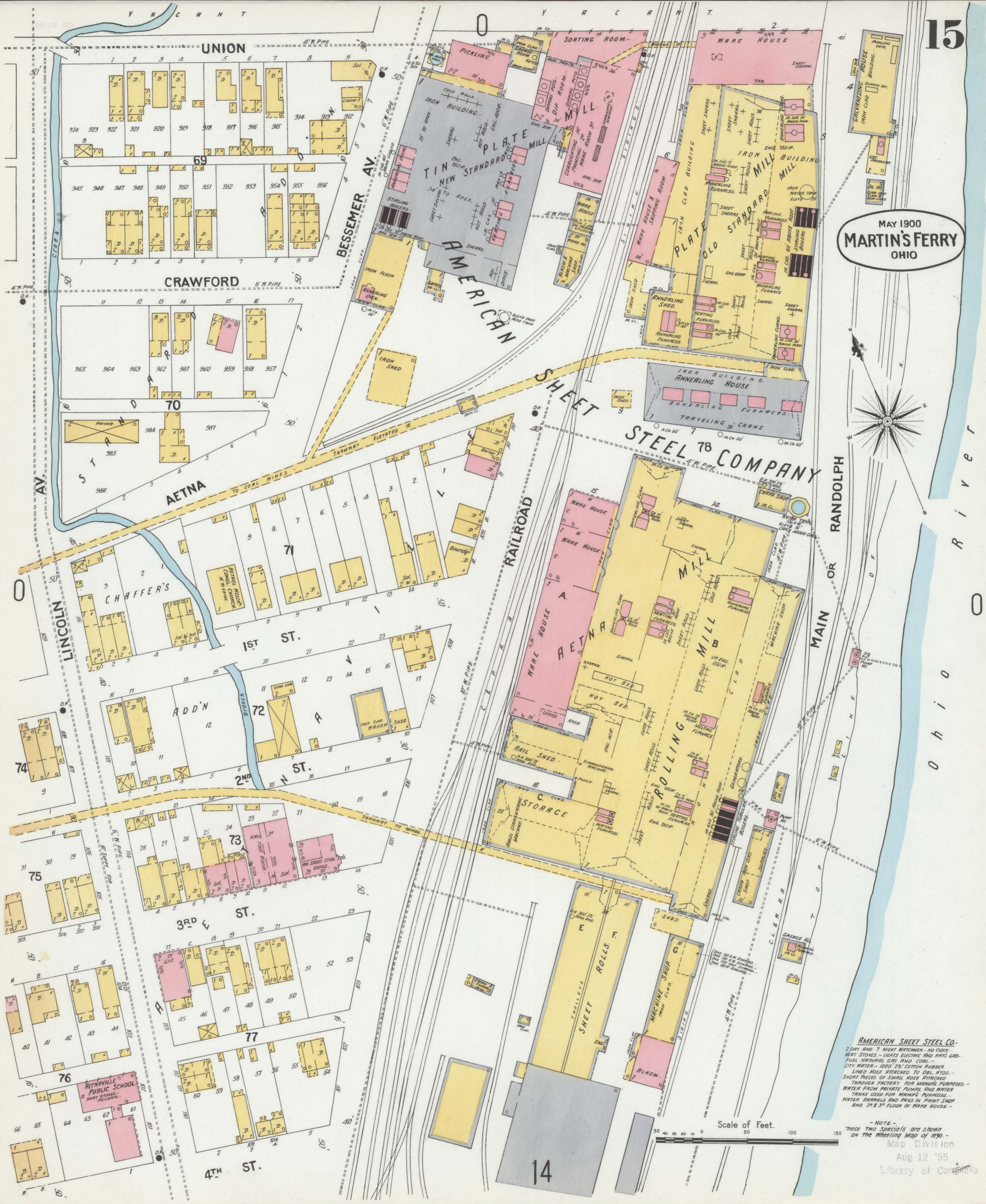
SPENCE BAGG & CO.
NIGHT & SUNDAY WATCHMAN WITH
COLUMBUS PNEUMATIC CLOCK & SENSATIONS HOURLY ROUNDS
HEAT STEAM, LIGHTS ELECTRIC, FUEL NAT'L GAS & COKE
CITY WATER, 100' HOSE ATTACHABLE TO HYDRANT
ONE 2 GAL. REX FIRE EXT'GR.

MAY 1900
MARTIN'S FERRY
OHIO



Map Division
 Aug 12 '55
 Library of Congress

MAY 1900
MARTIN'S FERRY
OHIO

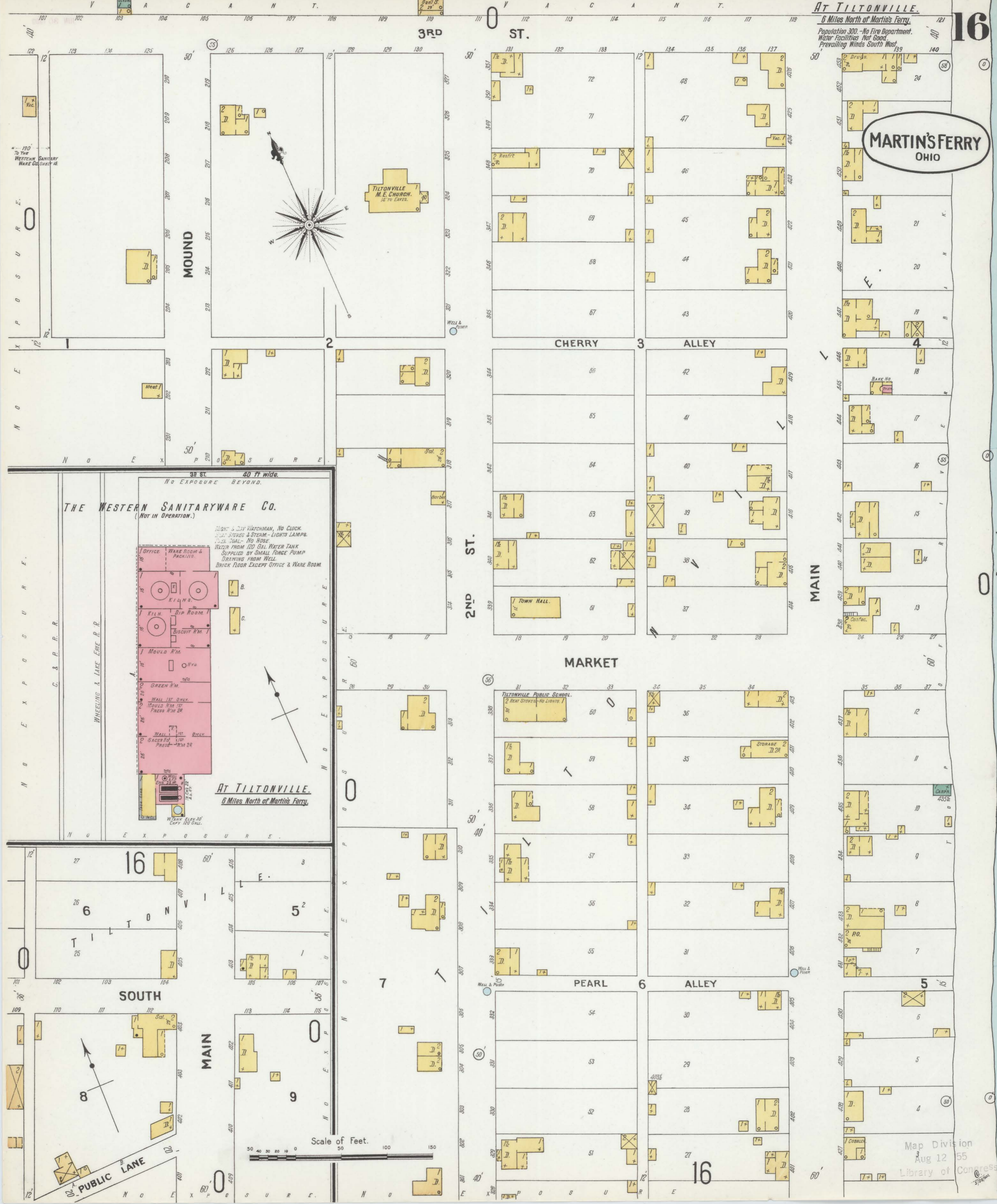


AMERICAN SHEET STEEL CO.
 2 DAY AND 7 NIGHT WATCHMEN - NO CLOCK
 HEAT STOVES - LIGHTS ELECTRIC AND NAT'L GAS -
 FUEL NATURAL GAS AND COAL -
 CITY WATER - 1000' 2 1/2" COTTON RUBBER
 LINED HOSE ATTACHED TO DEL. HYD. -
 SHORT PIECES OF SMALL HOSE ATTACHED
 THROUGH FACTORY FOR MANUF. PURPOSES -
 WATER FROM PRIVATE PUMPS AND WATER
 TANKS USED FOR MANUF. PURPOSES -
 WATER BARRELS AND PANS IN PAINT SHOP
 AND 2 1/2" 3" FLOOR OF WARE HOUSE -

- NOTE -
 THESE TWO SPECIALS ARE SHOWN
 ON THE INDUSTRY MAP OF 1900 -
 Map Division
 Aug 12 '55
 Library of Congress

Scale of Feet.

MARTIN'S FERRY OHIO



TO THE WESTERN SANITARYWARE CO. SHEET 16

N O S U R E

N O S U R E

N O S U R E

MOUND

CHERRY

ALLEY

2ND ST.

MARKET

MAIN

PEARL

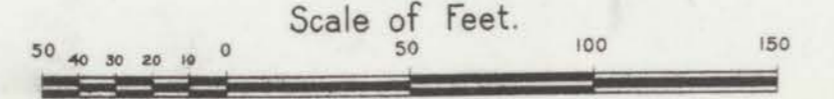
ALLEY

SOUTH

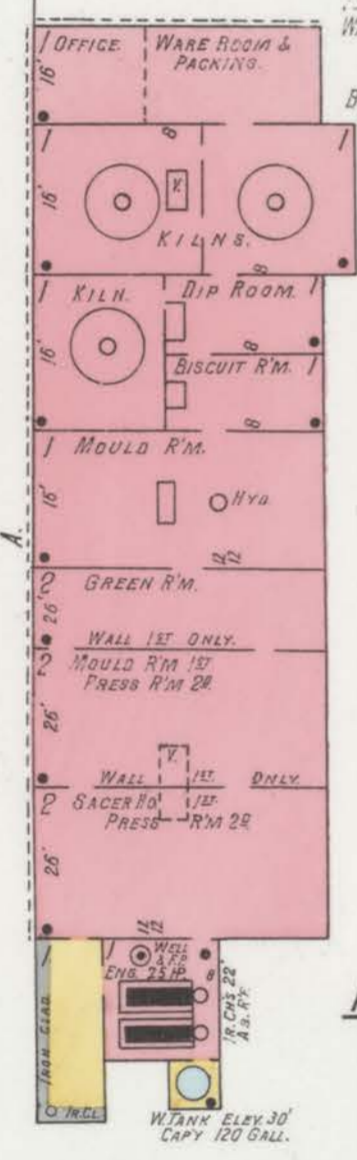
MAIN

PUBLIC LANE

Scale of Feet.



THE WESTERN SANITARYWARE CO. (Not in operation.)



At Tiltonville. 6 Miles North of Martins Ferry.