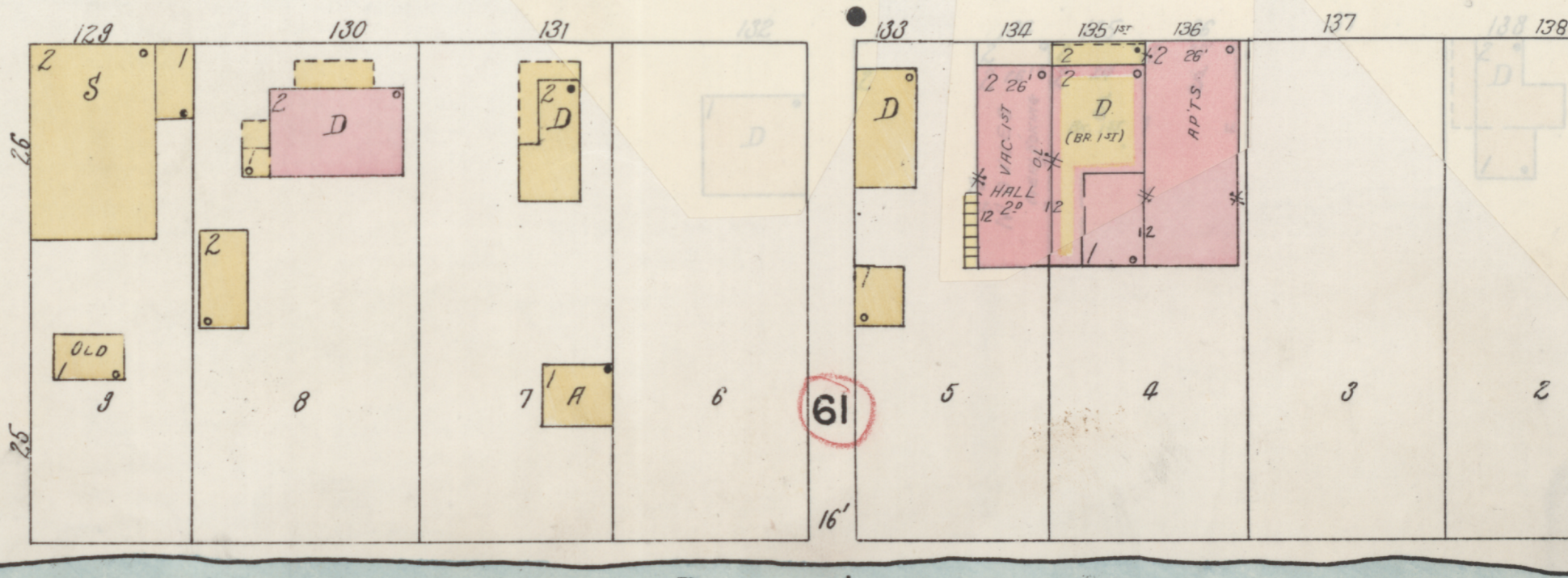
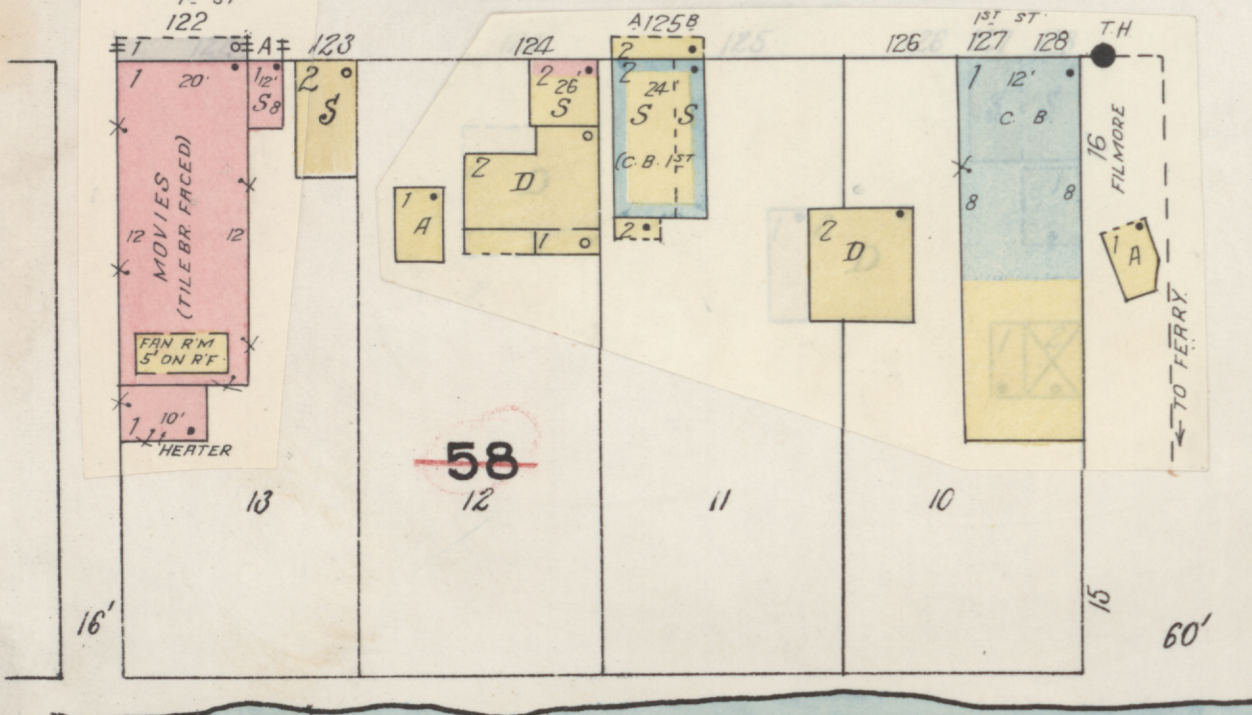
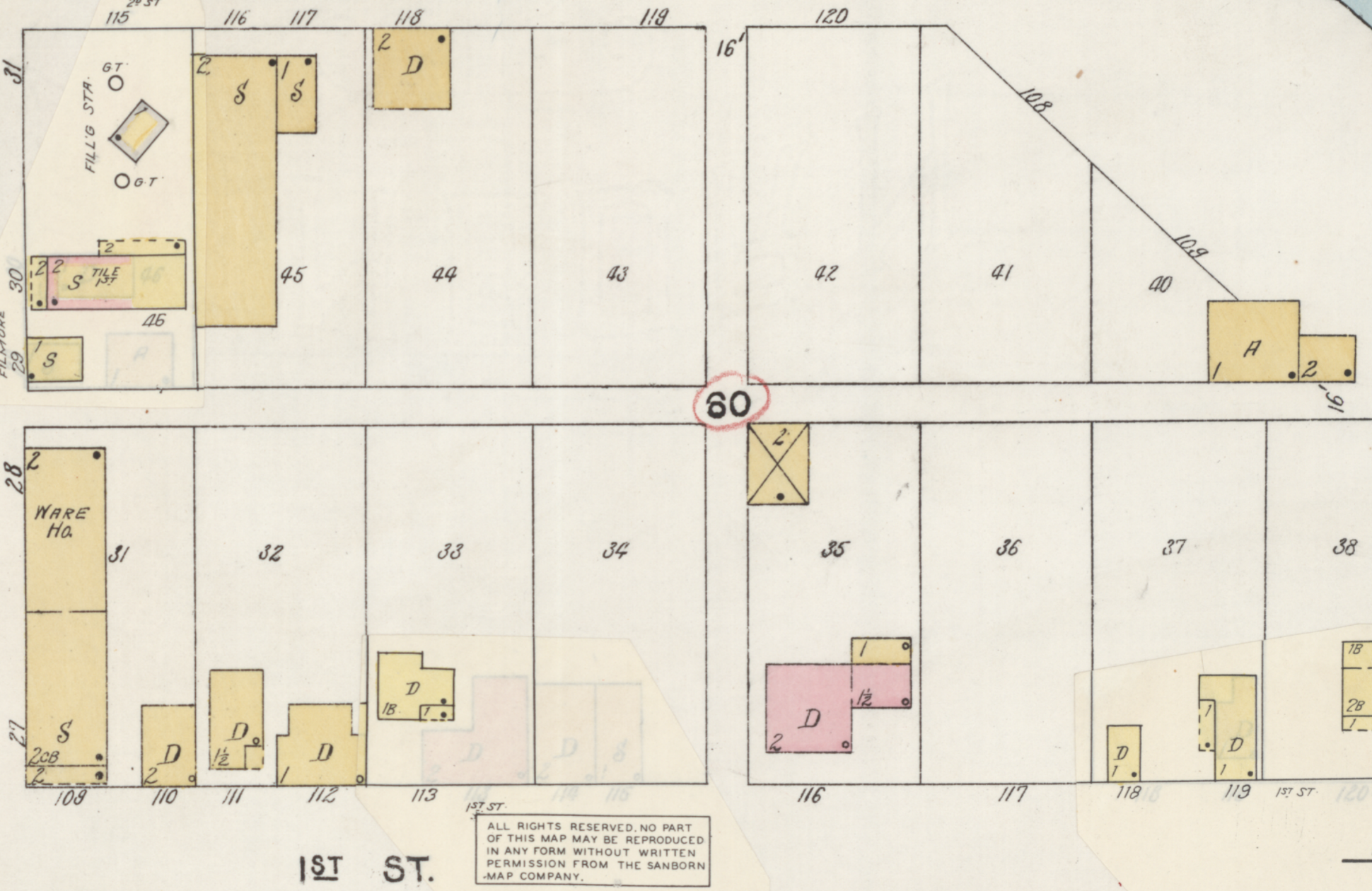
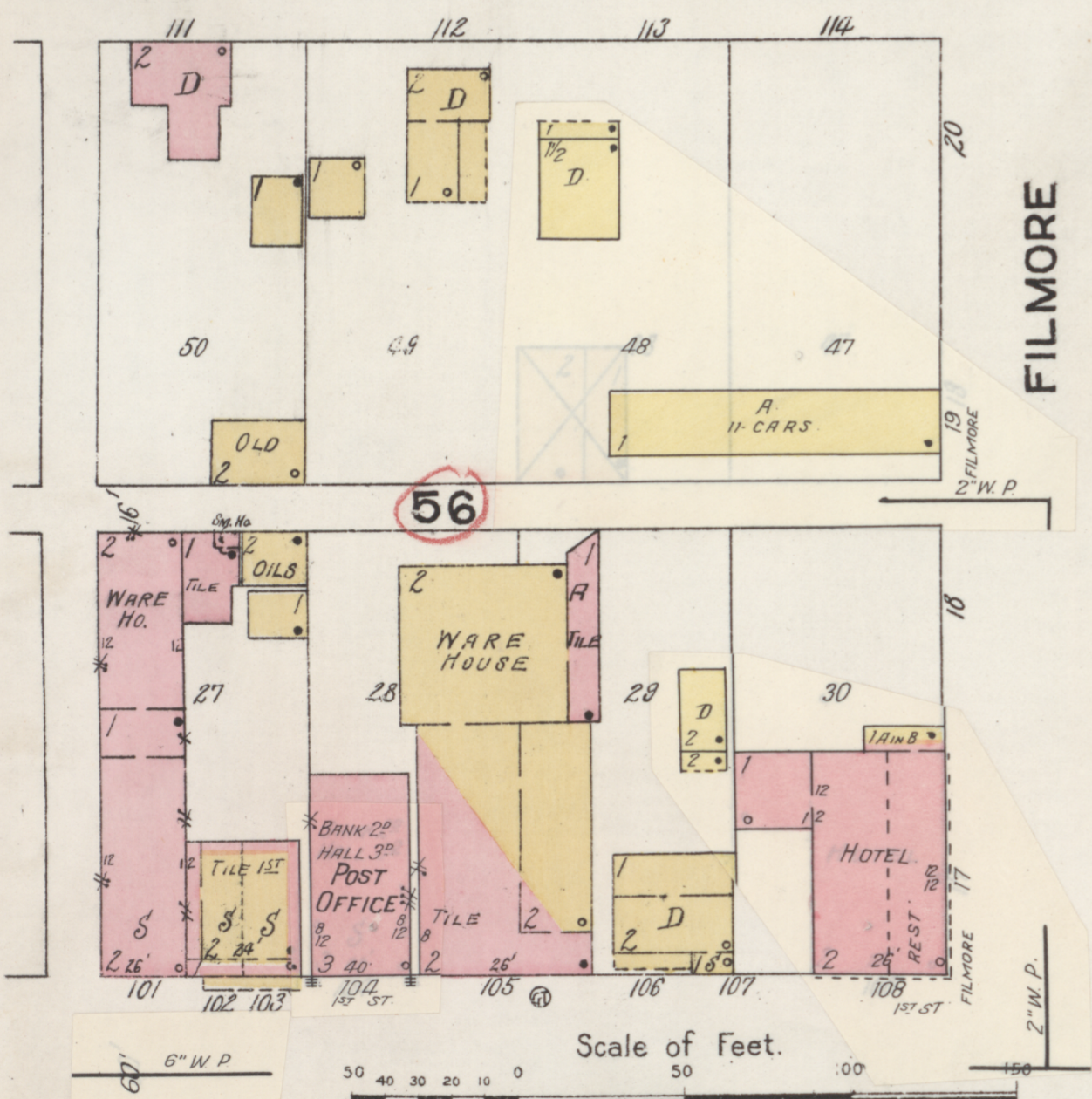
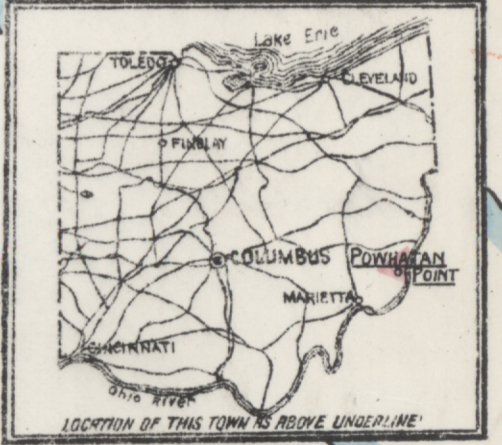


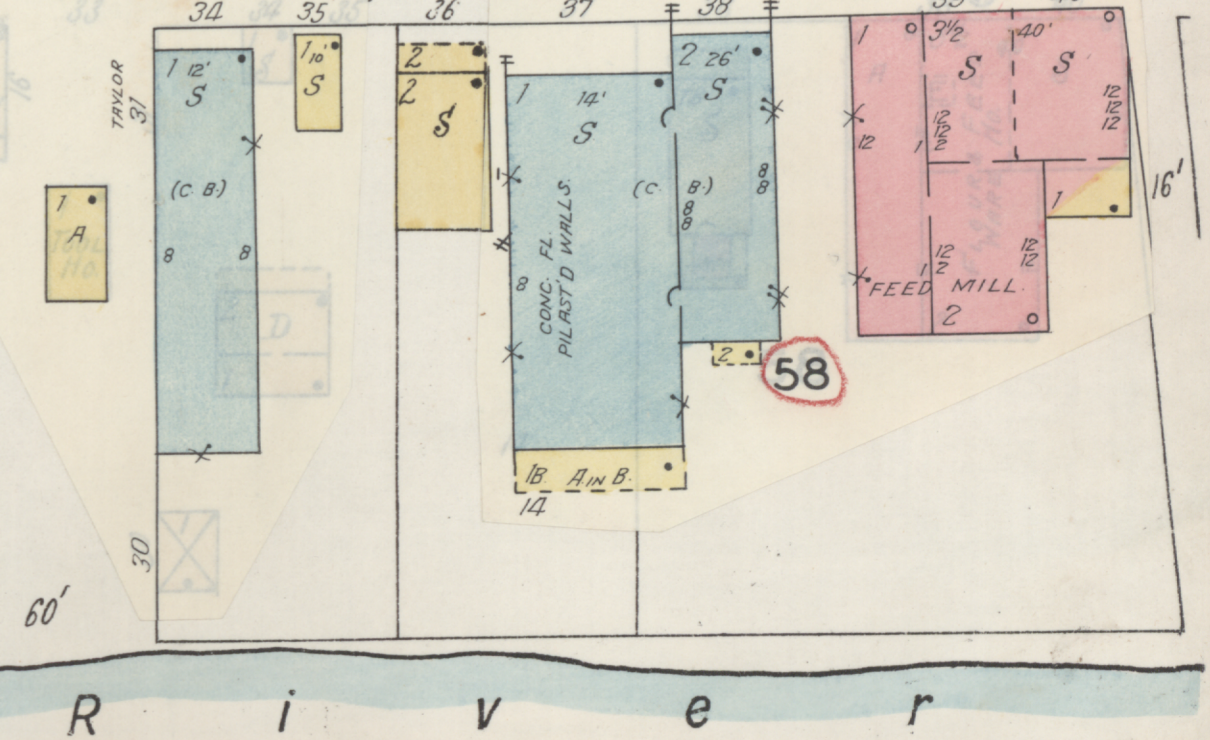
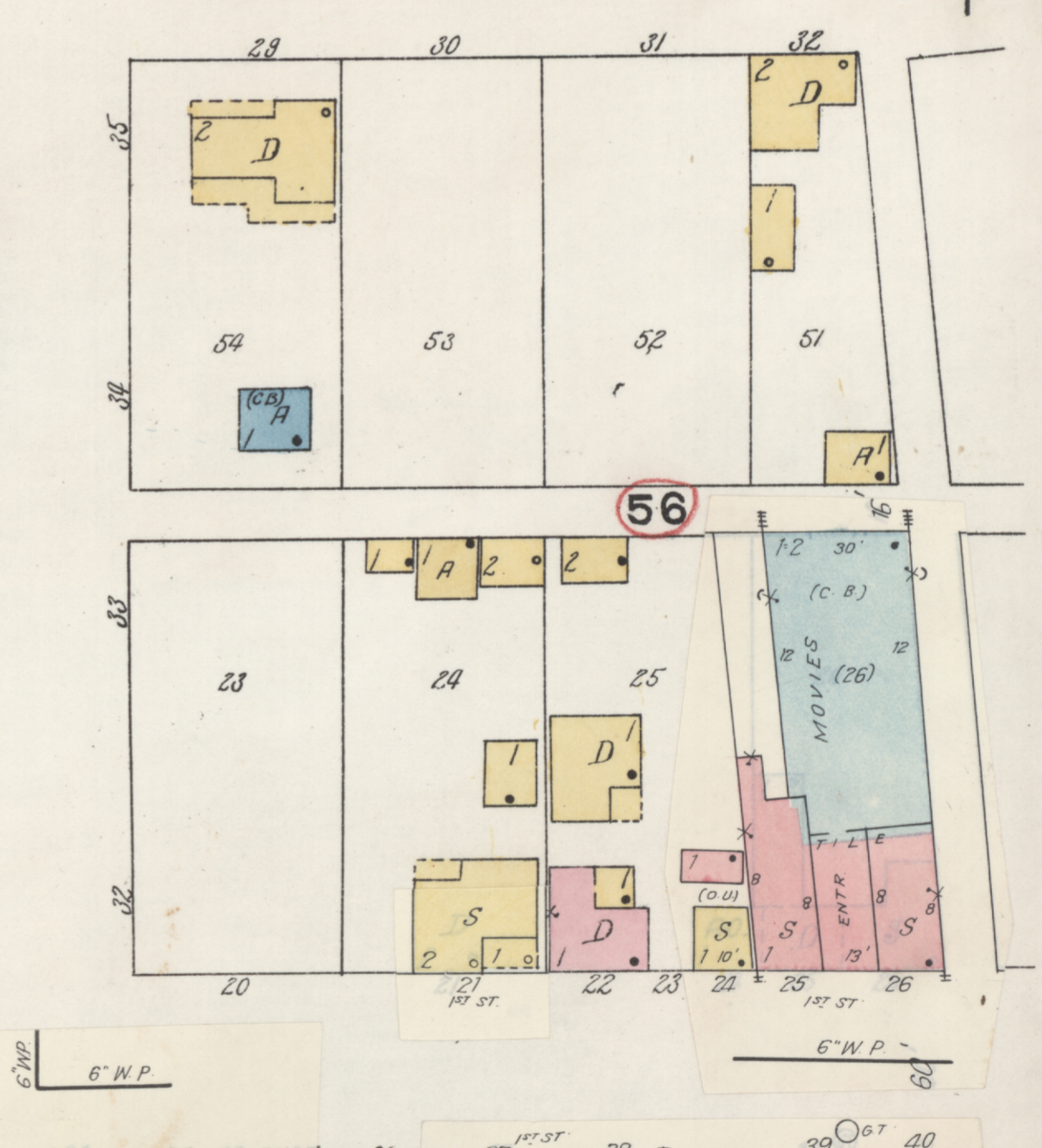
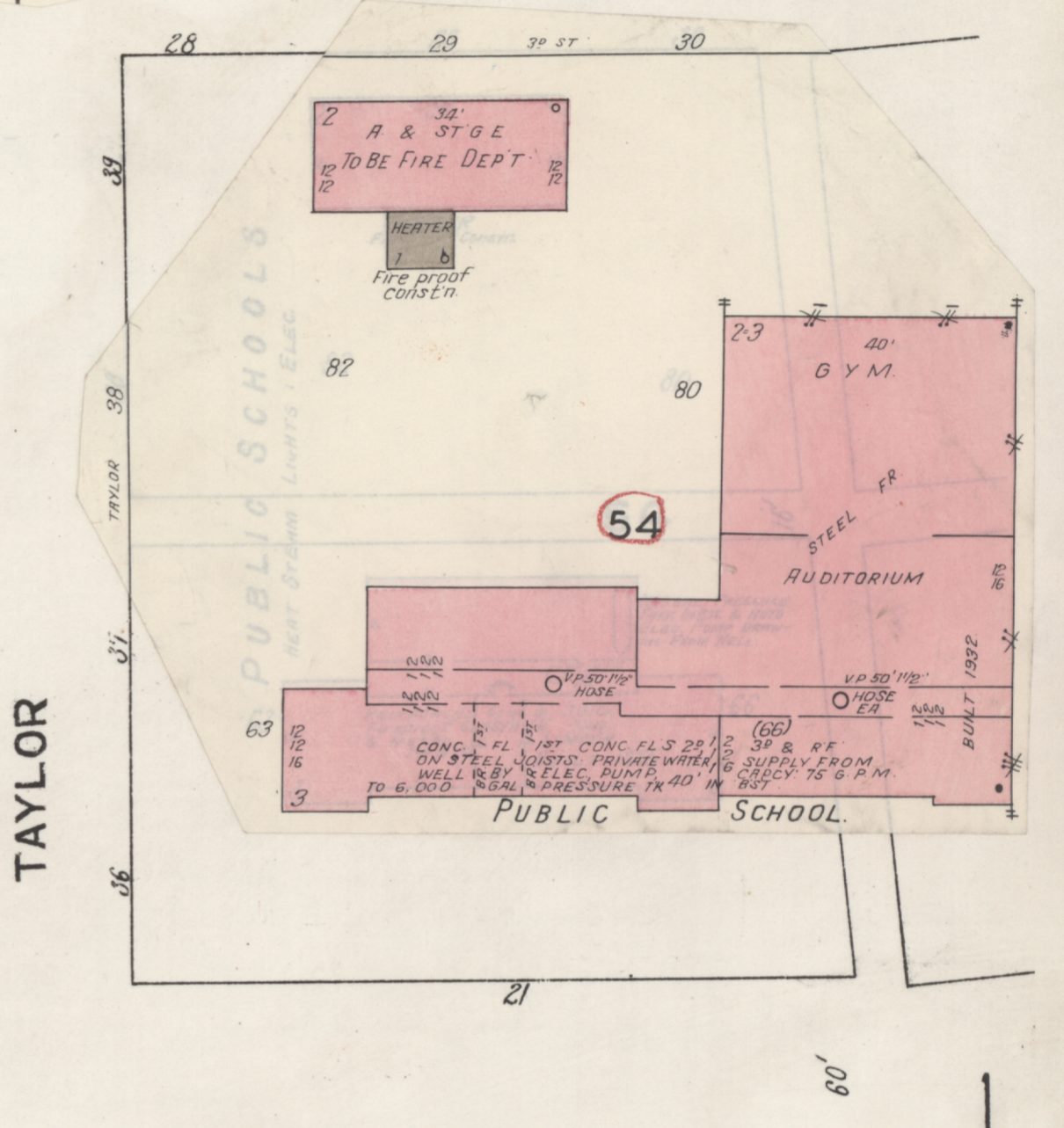
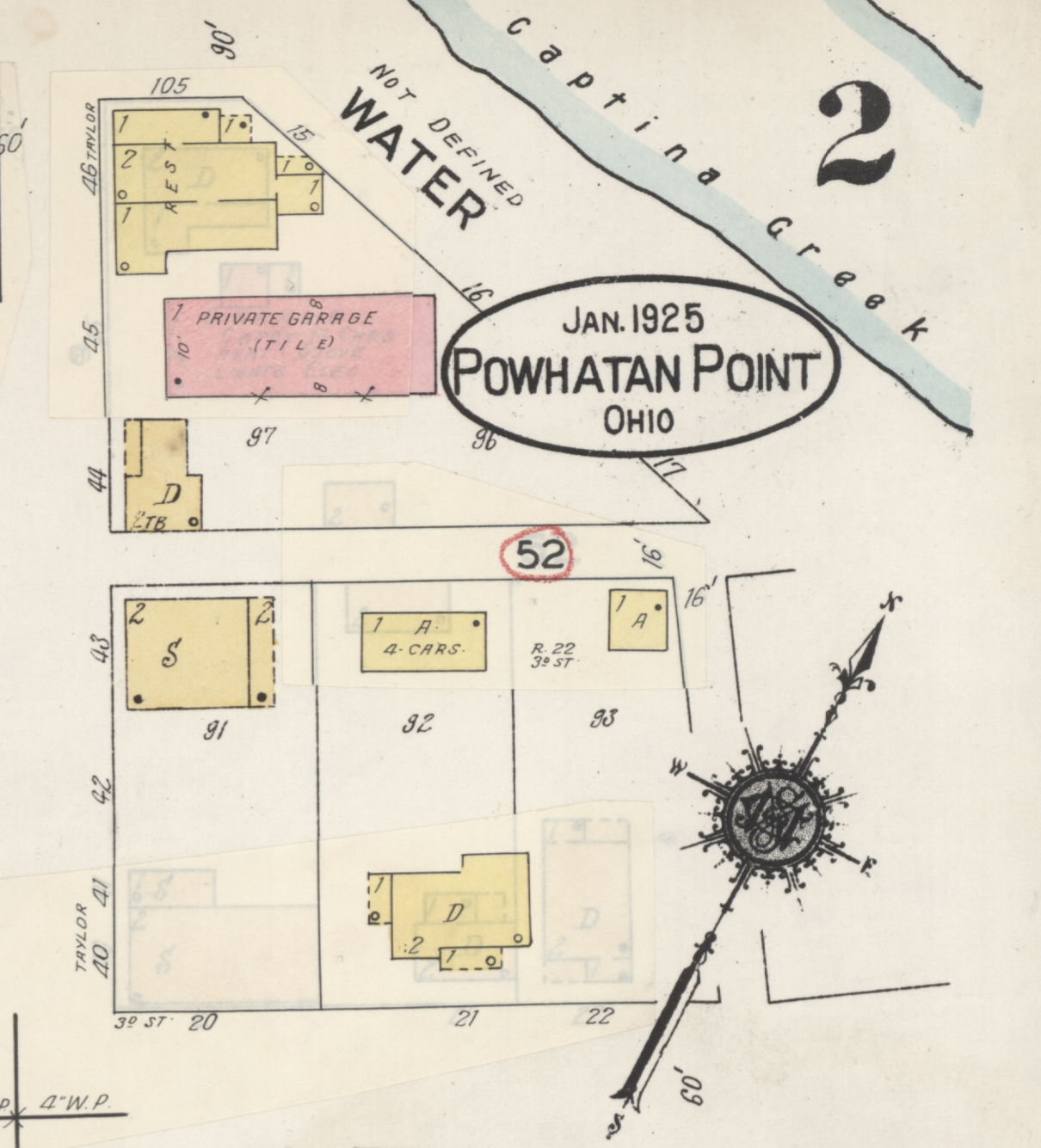
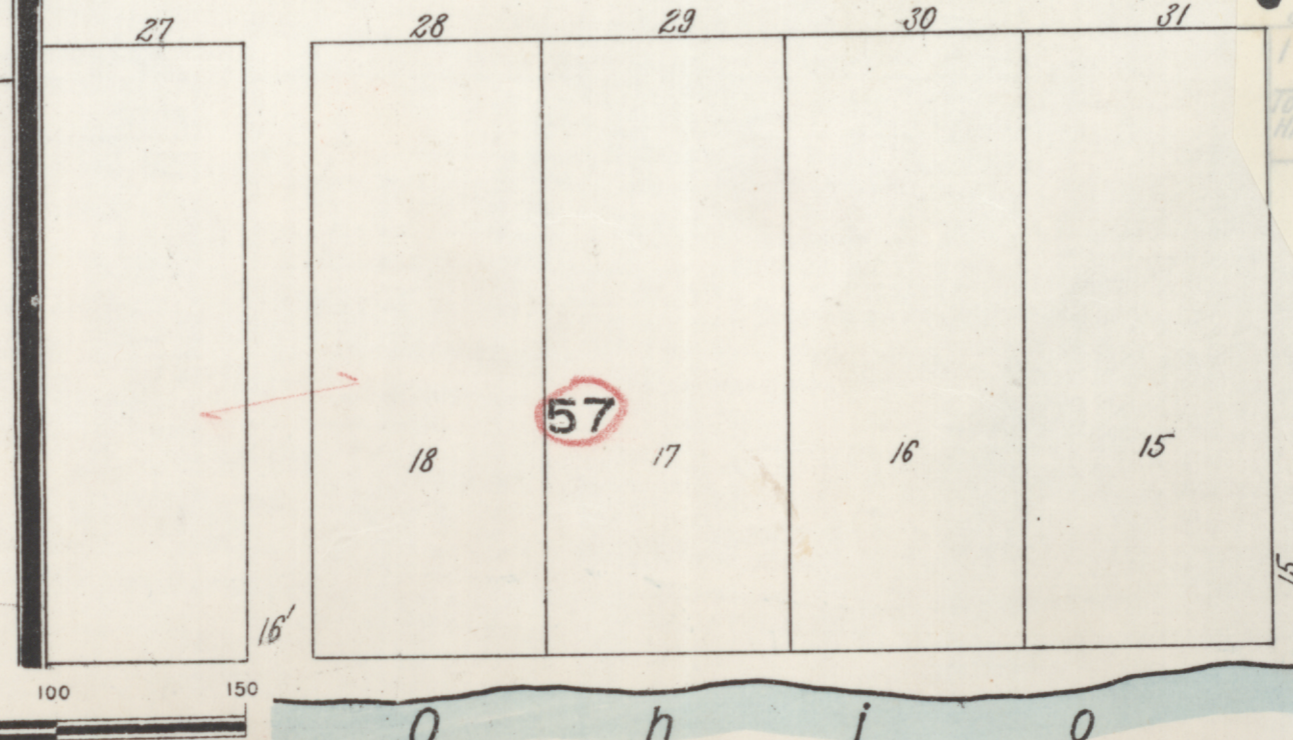
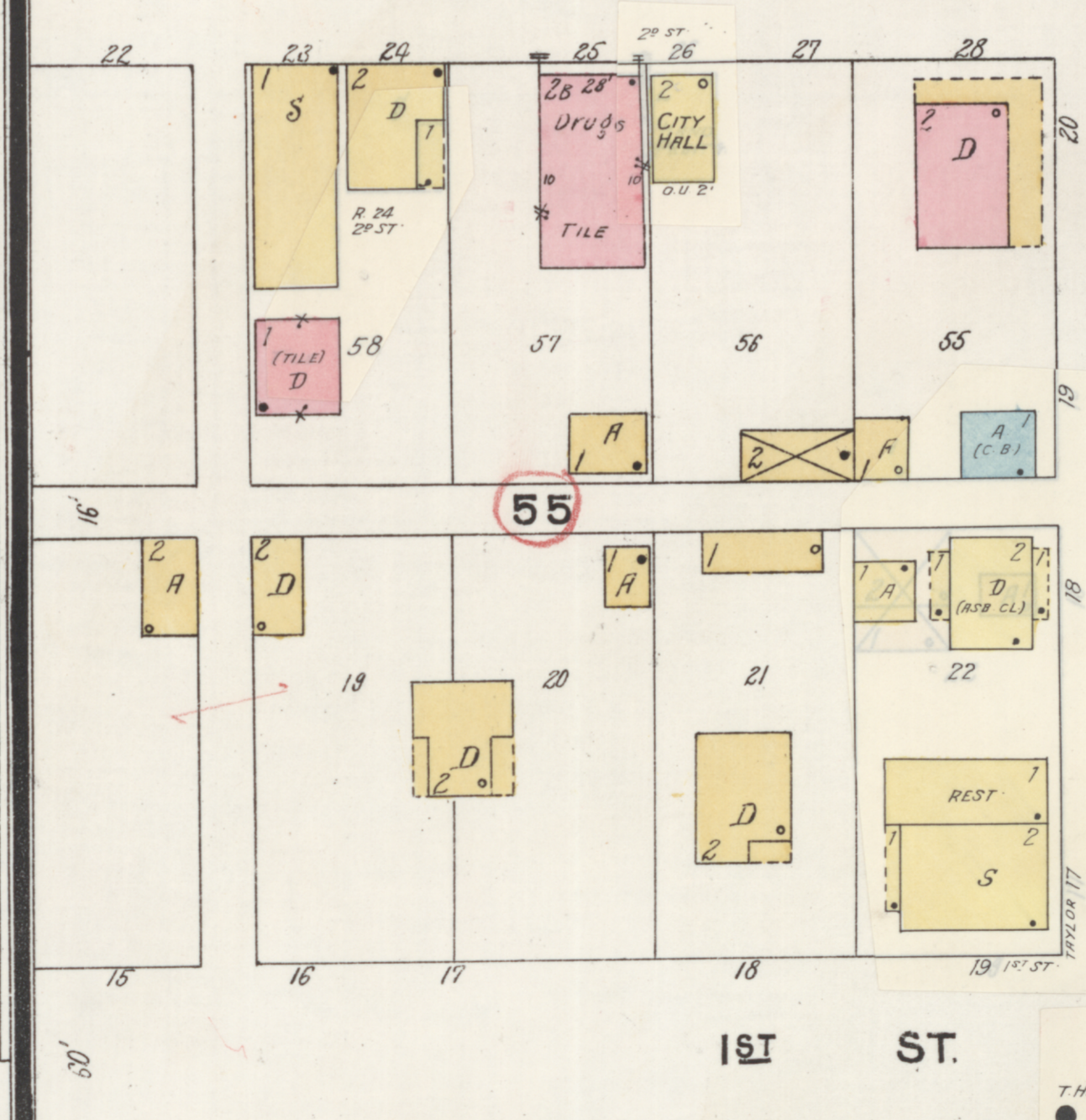
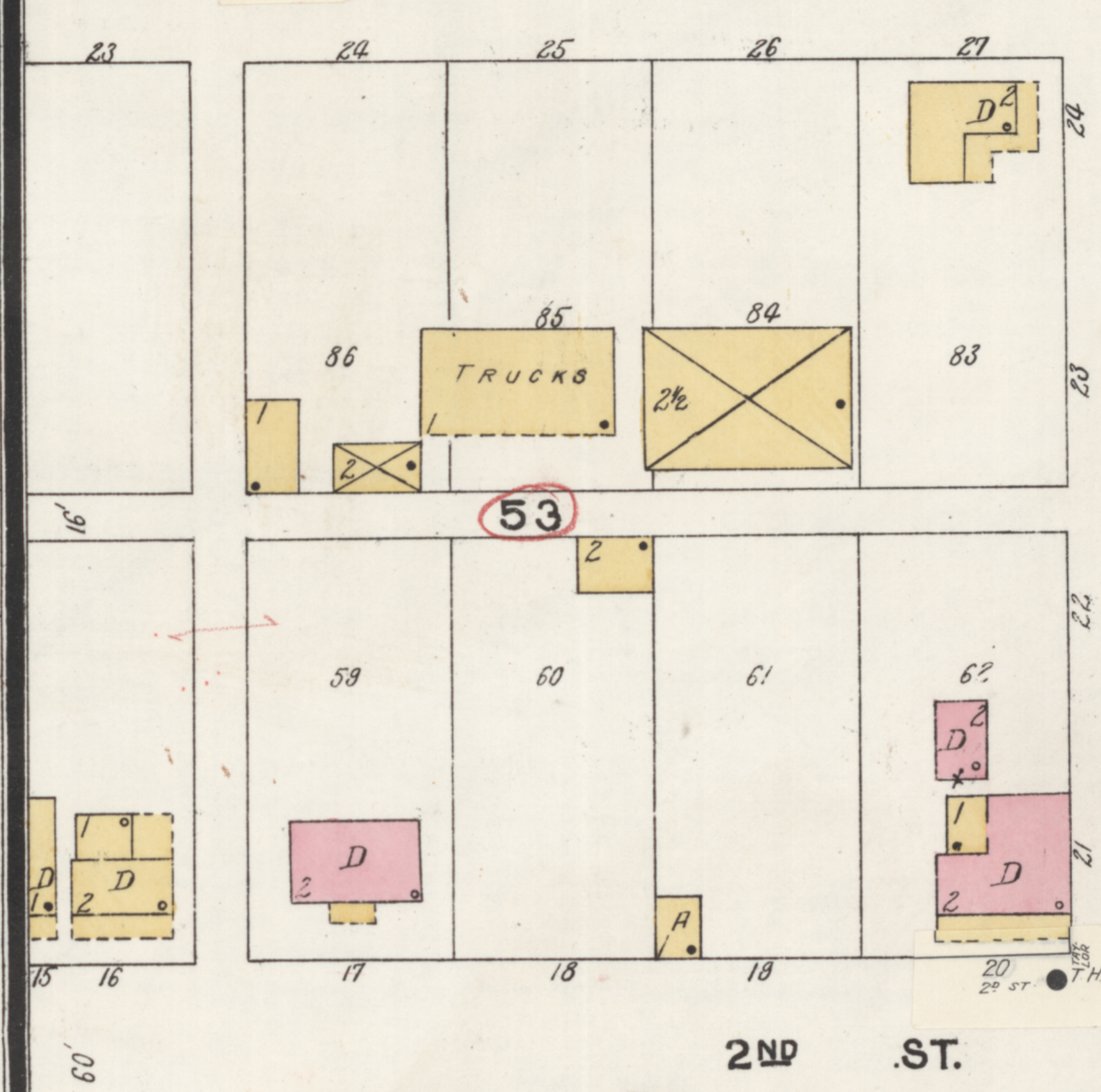
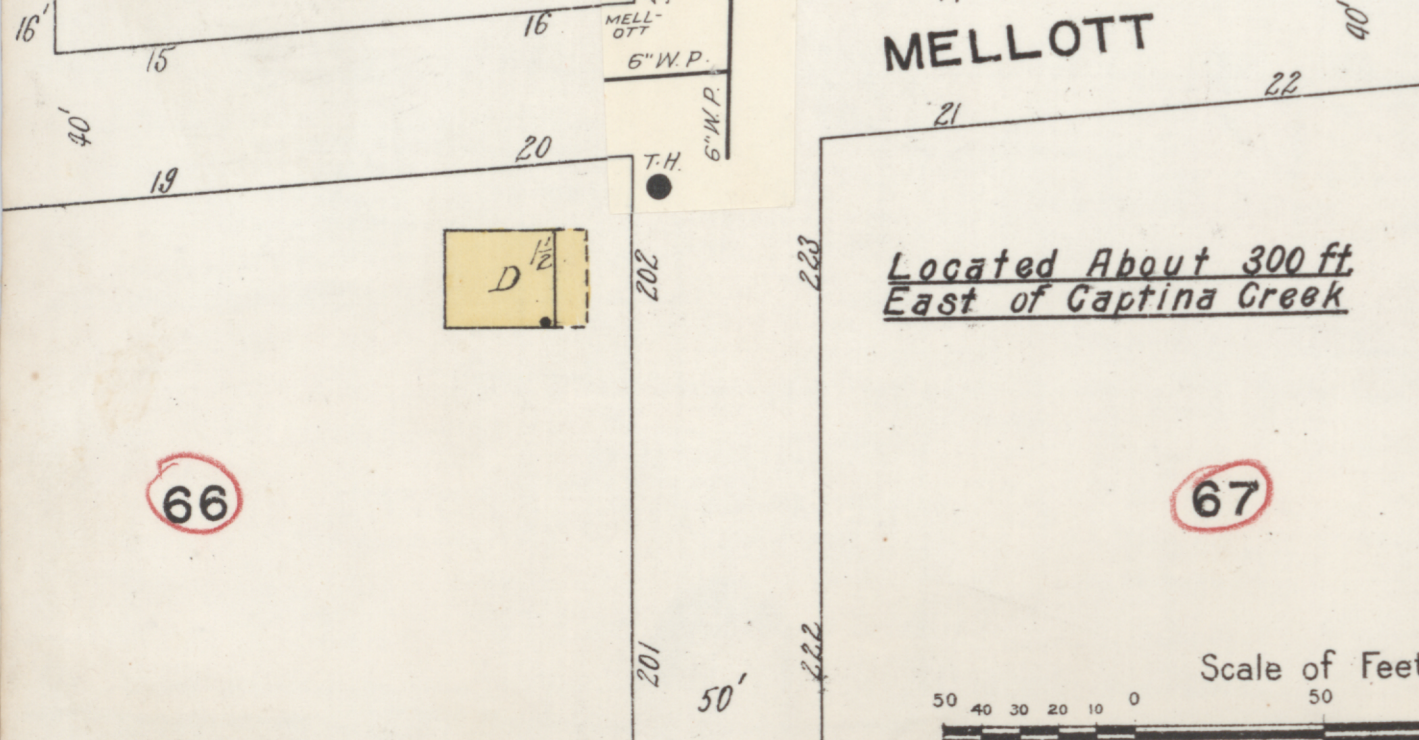
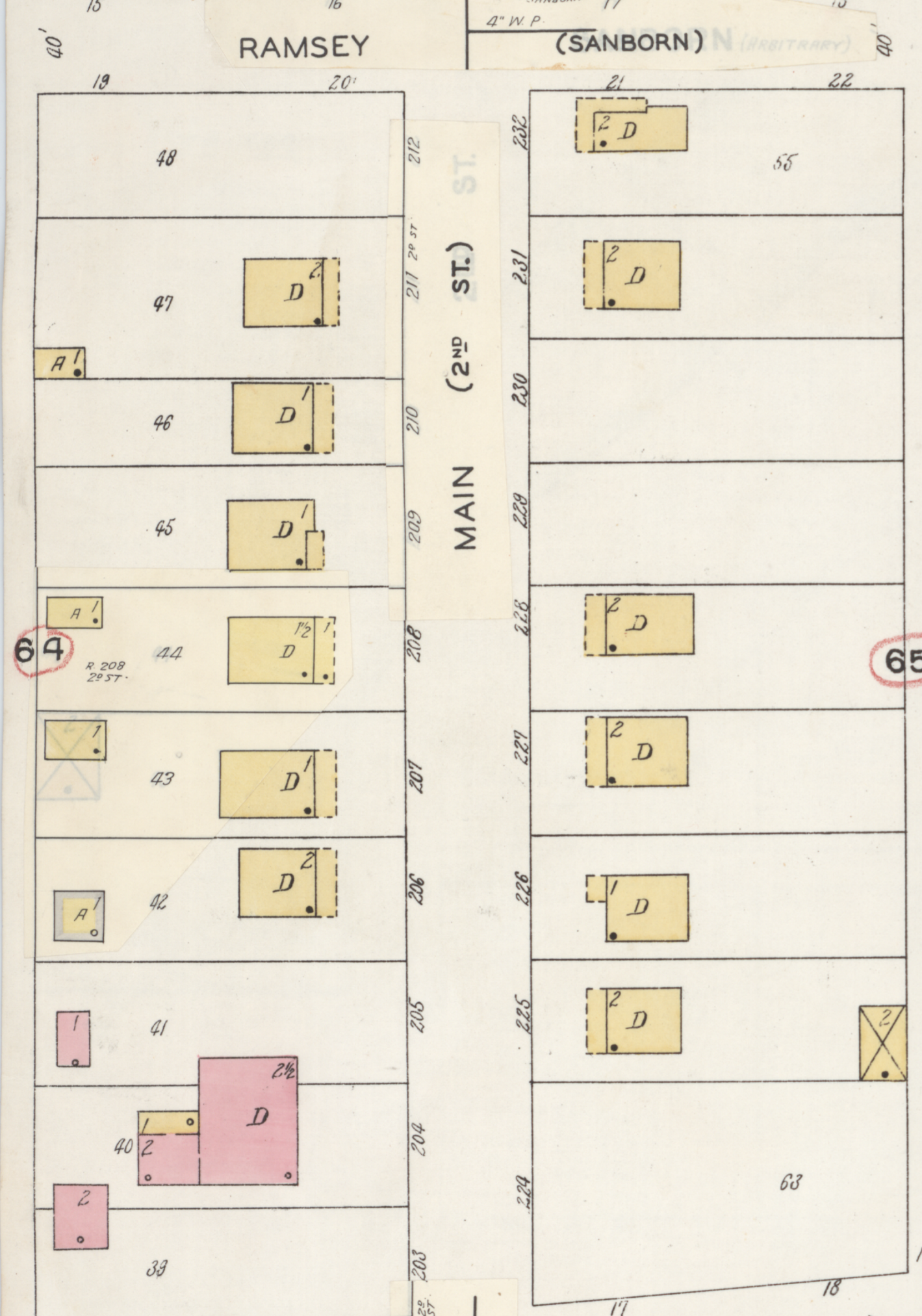
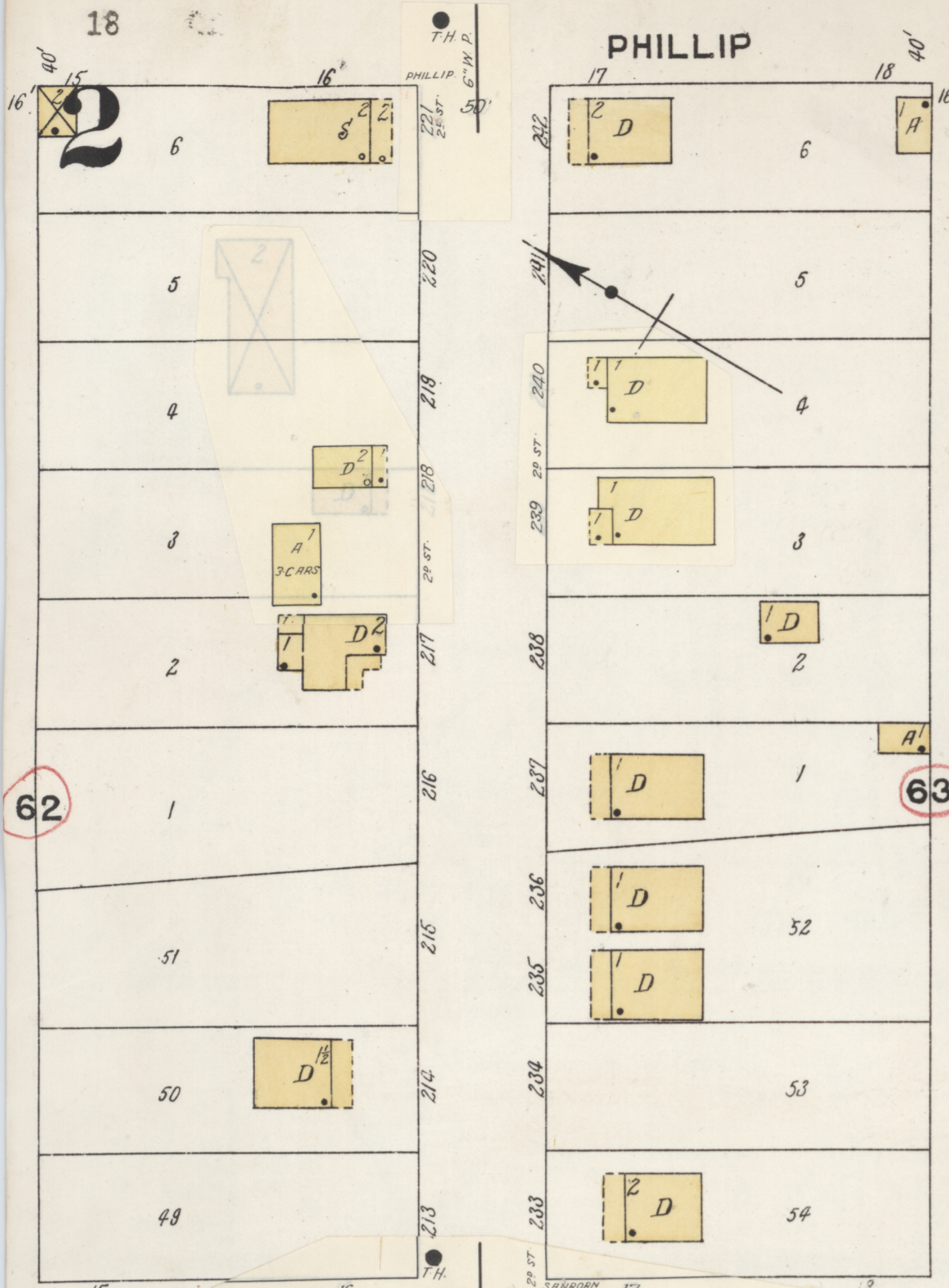
KEY

- FIRE WALL 12 IN. ABV ROOF
- FIRE WALL 12 IN. ABV ROOF
- WOOD CORNICE
- FIRE WALL 12 IN. ABV ROOF
- FRAME PARTITION
- OPENING WITH IRON DOOR
- "STANDARD"
- IRON DOOR
- WINDOWS & IRON SHUTTERS
- WINDOW 1ST STORY
- WINDOWS 1ST & 2ND STORIES
- "2ND 4"
- STABLE (CA) - CONCRETE BLOCK
- BUILDINGS COLORED YELLOW ARE FRAME
- RED BRICK
- BLUE STONE
- GRAY IRON
- BROWN FIRE PROOF
- AUTOMATIC SPRINKLERS
- INDICATE RELATIVE HEIGHTS
- FIRE STATION AS SHOWN ON KEY MAP
- ALTERNATE STREET NUMBERS ARE ACTUAL
- CONSECUTIVE STREET NOS ARE ARBITRARY



CORRECTION RECORD

REV. NO.	DATE OF CORRECTION	ATTACHED BY	DATE ATTACHED
1	6-40	M. A.	8-30-15



Located About 300 ft East of Captina Creek

