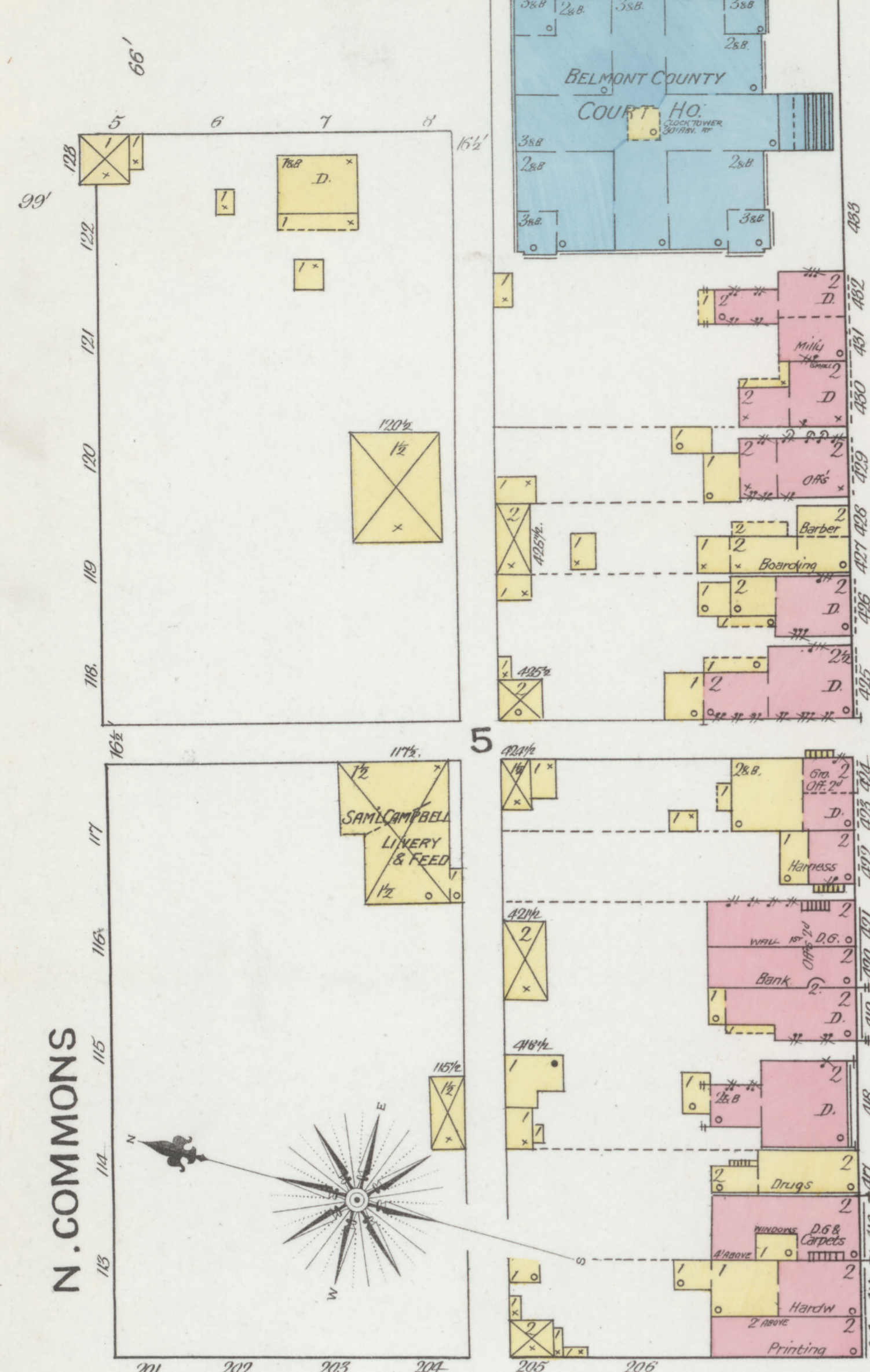
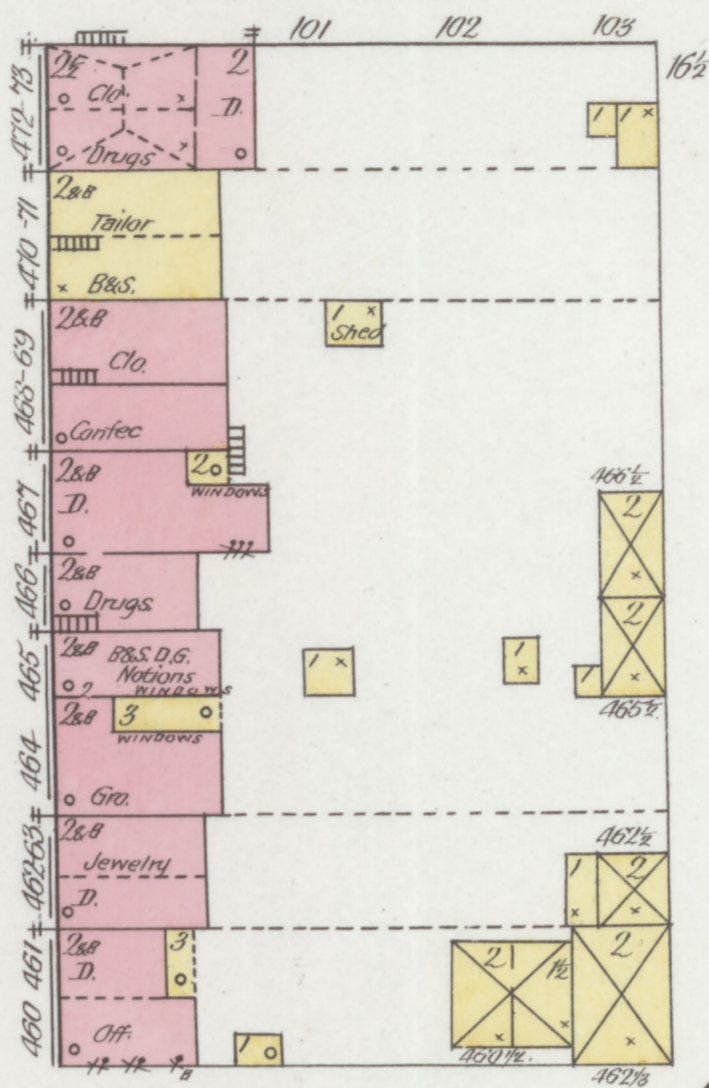


MAIN CROSS OR MARKET

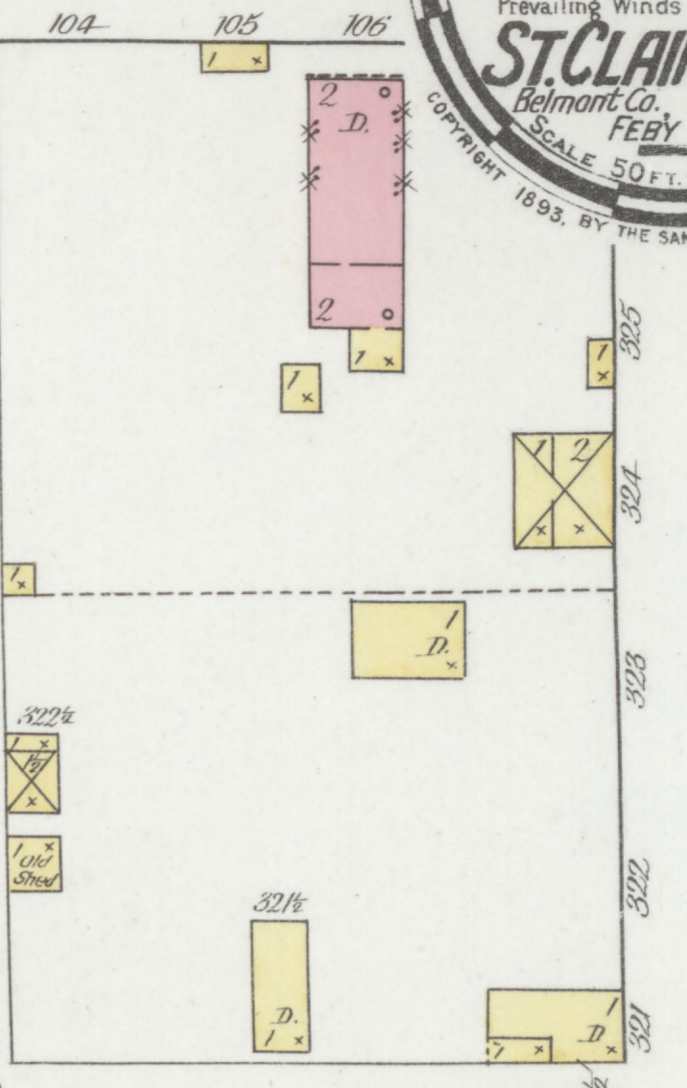


N. COMMONS

MAIN

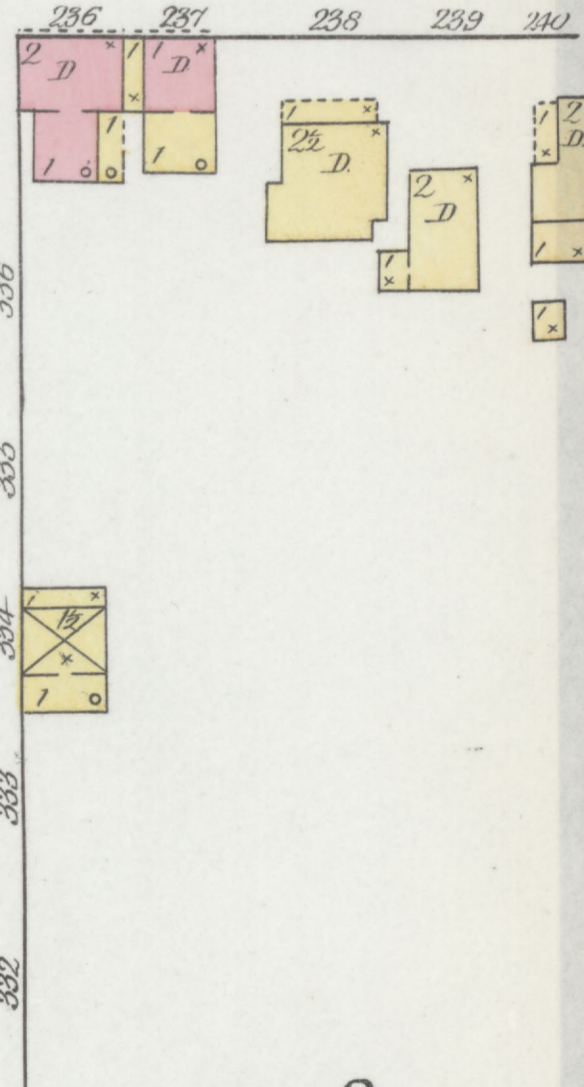
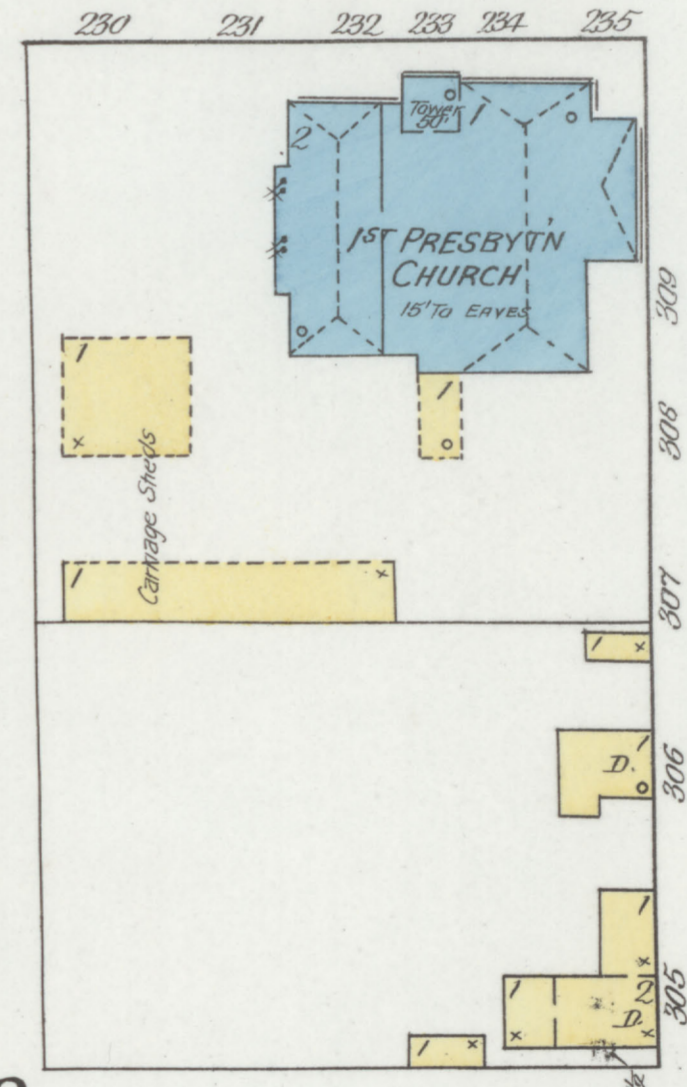
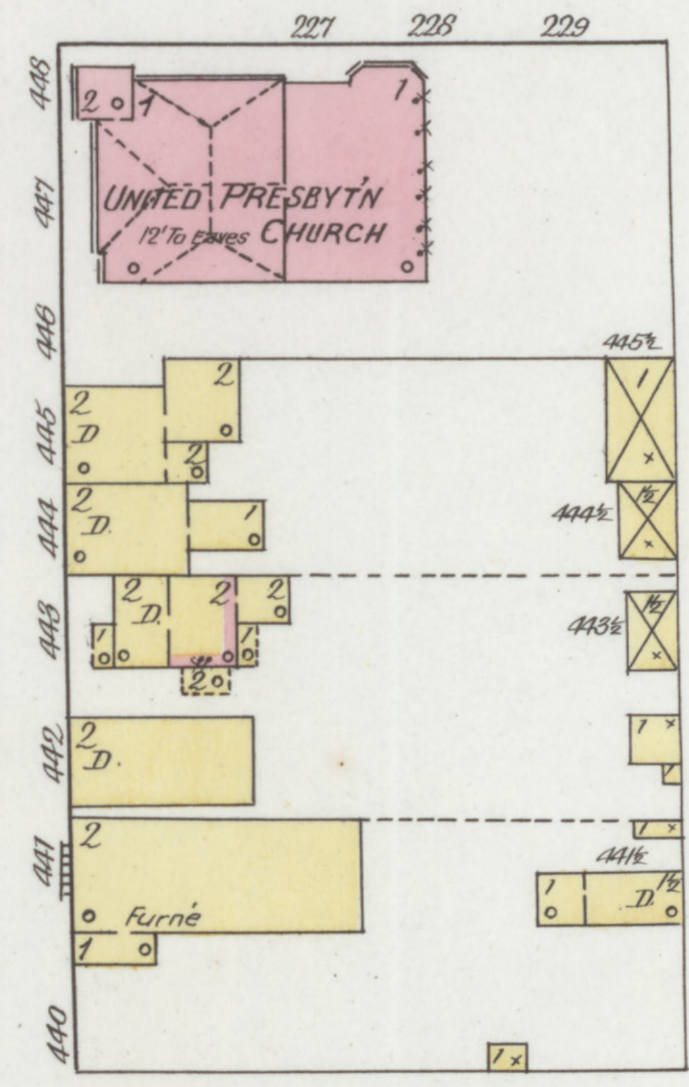
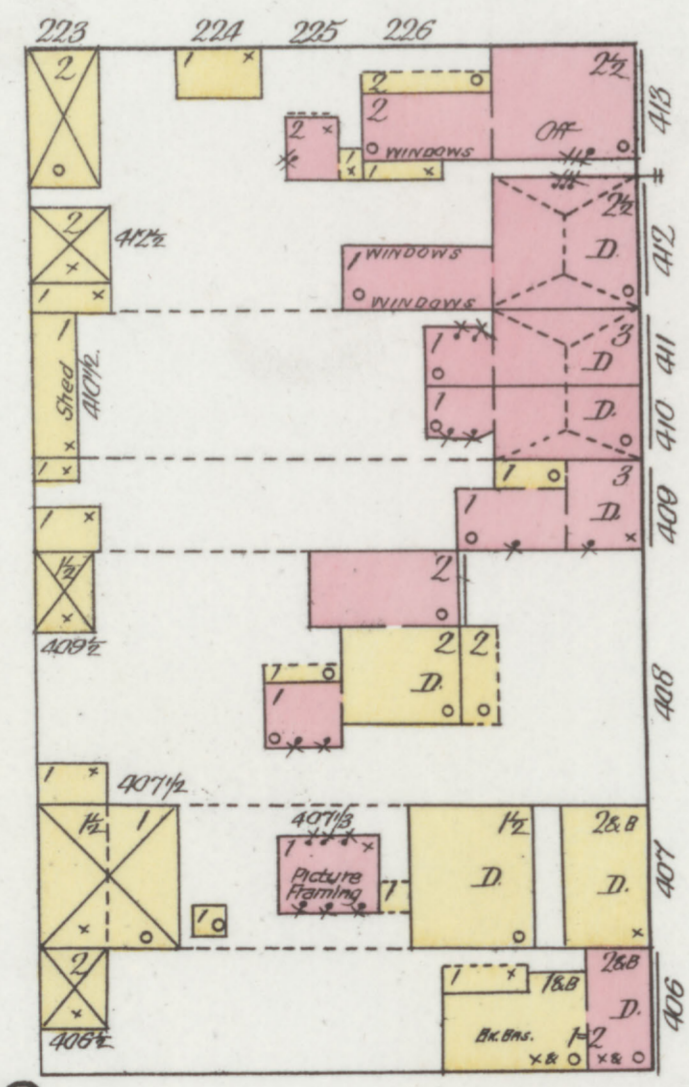
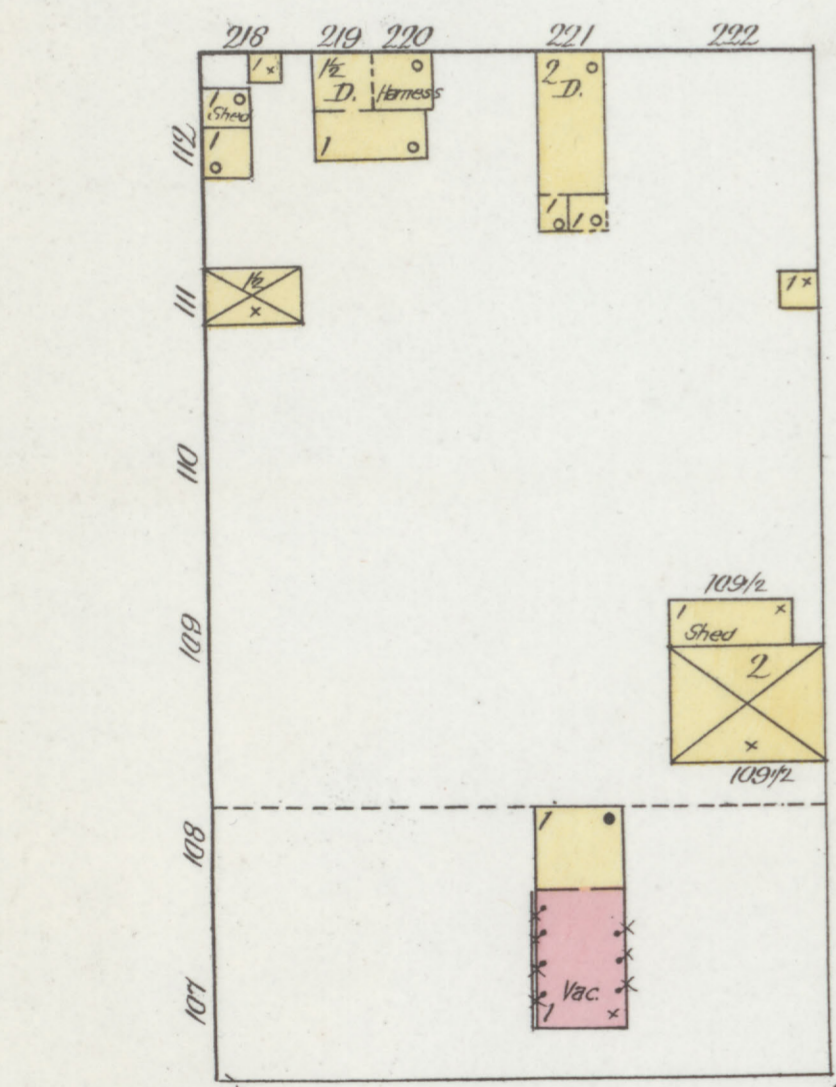


WAYNE OR MARIETTA



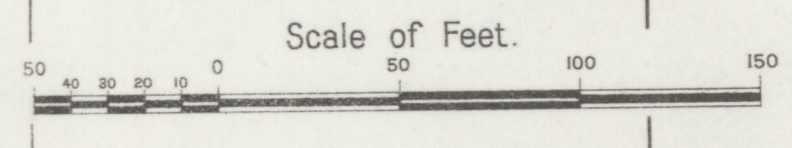
S. COMMONS

NOTE: No Organized Fire Dept
Town Has a Few Ladders Which Are
Kept in East of Court Ho.



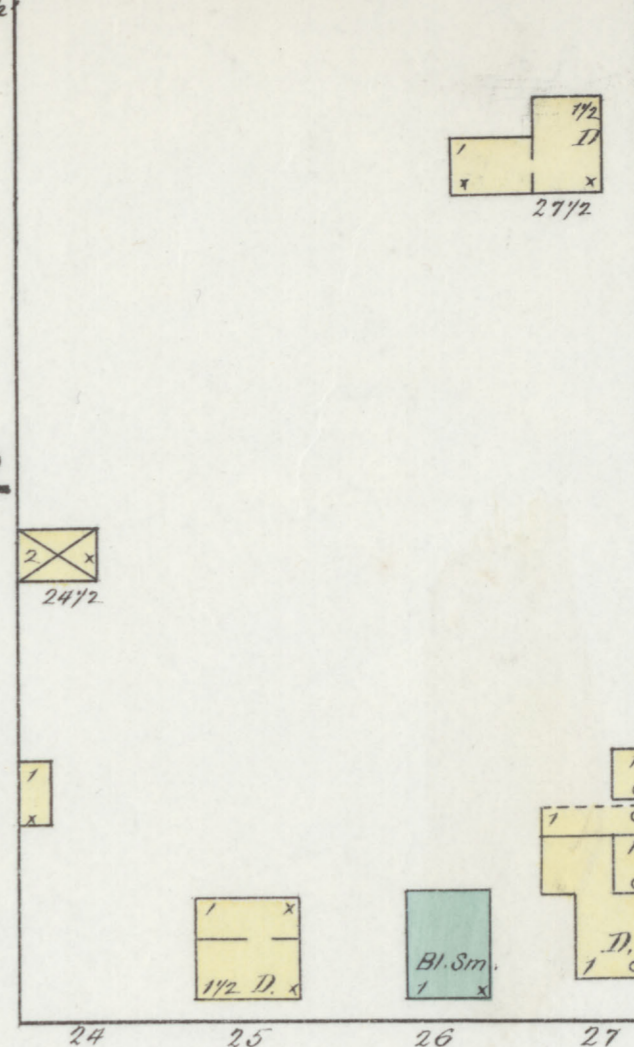
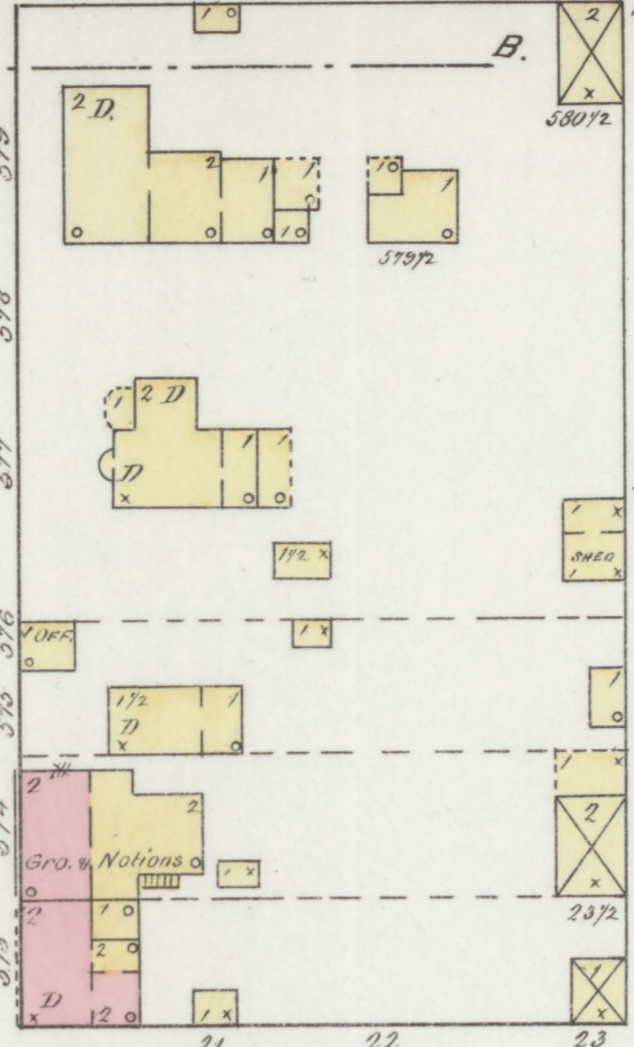
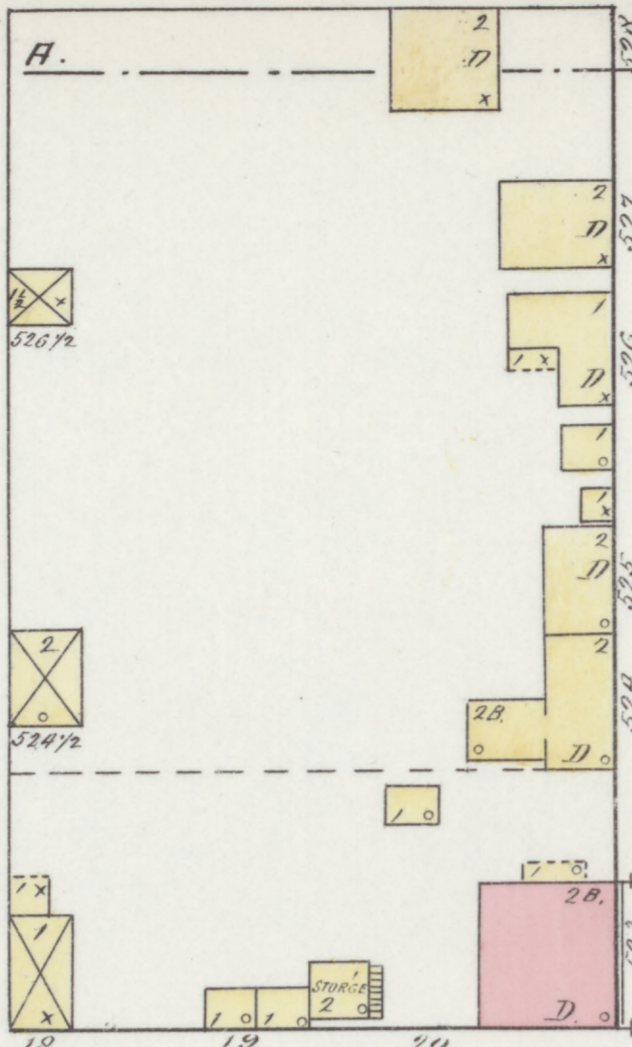
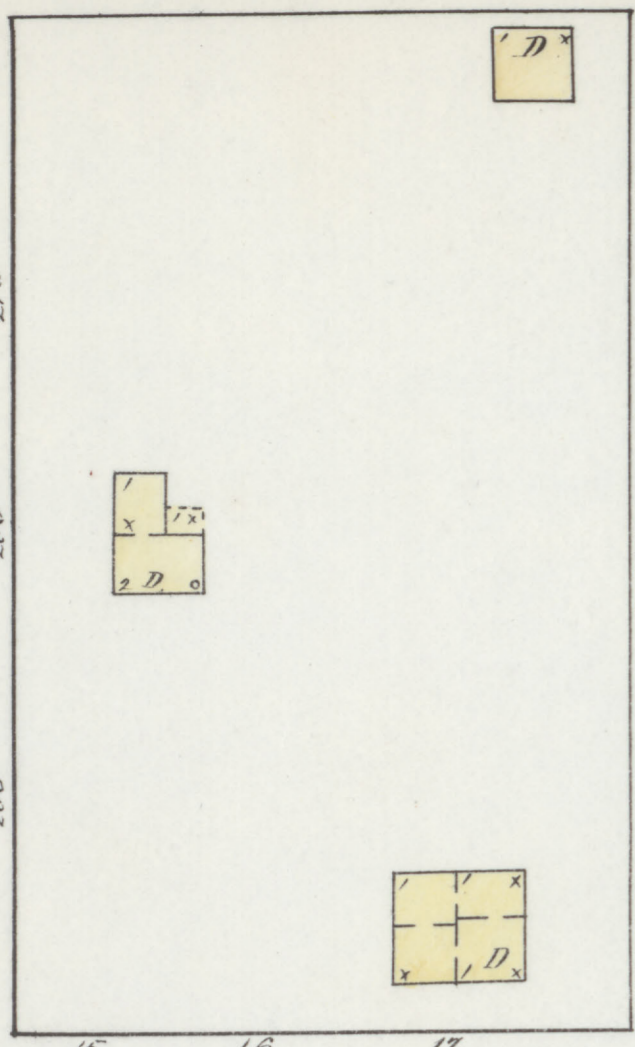
KEY

1	FIRE WALL 6 IN. AS ROOF
2	DOUBLE ROOF
3	CONCRETE ROOF
4	STEAM BOILER
5	FRAME PARTITION
6	OPENING & IRON DOOR
7	WINDOWS - SHUTTERS
8	STABLE
9	WINDOW IN 1 ST STORY
10	11' x 3"
11	27' x 4 1/2"
12	BLDGS COLORED YELLOW ARE FRAME
13	RED - BRICK
14	BLUE - STONE
15	GREY - IRON
16	BROWN - ADOBE
17	GREEN - SPECIALS
18	MARKED (O) ARE CLOTH LINED
19	INDICATE RELATIVE HEIGHTS
20	ALTERNATE STREET NOS ARE ACTUAL
21	CONSECUTIVE " " ARBITRARY
22	BROKEN LINE NEAR BLDG - WOOD CORNICE
23	SOLID " " METAL

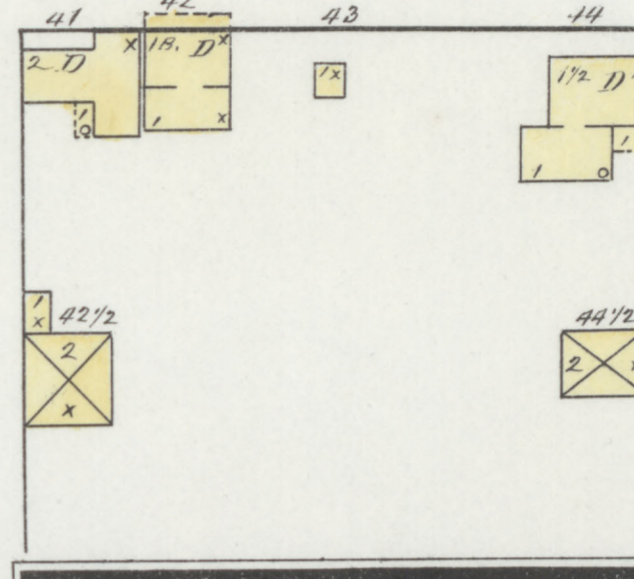
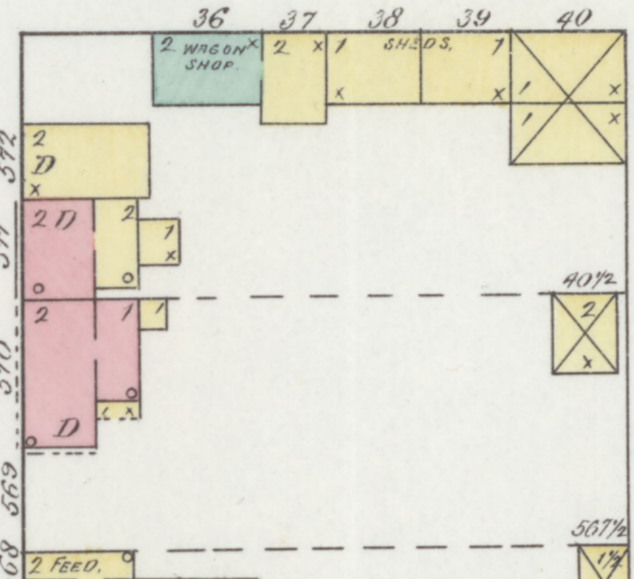
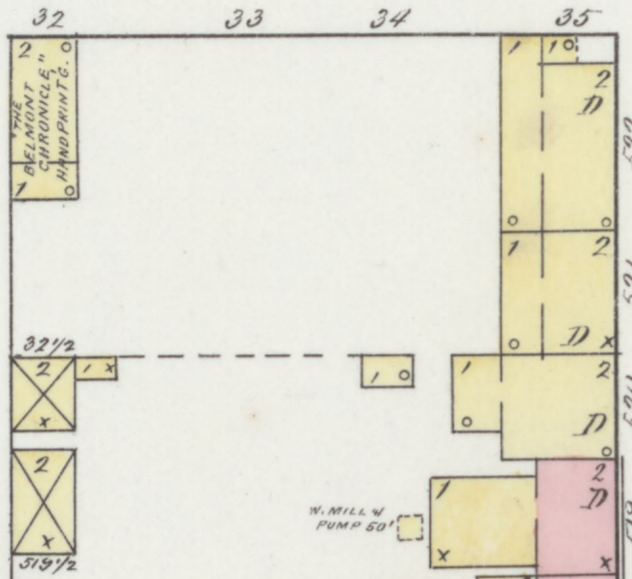
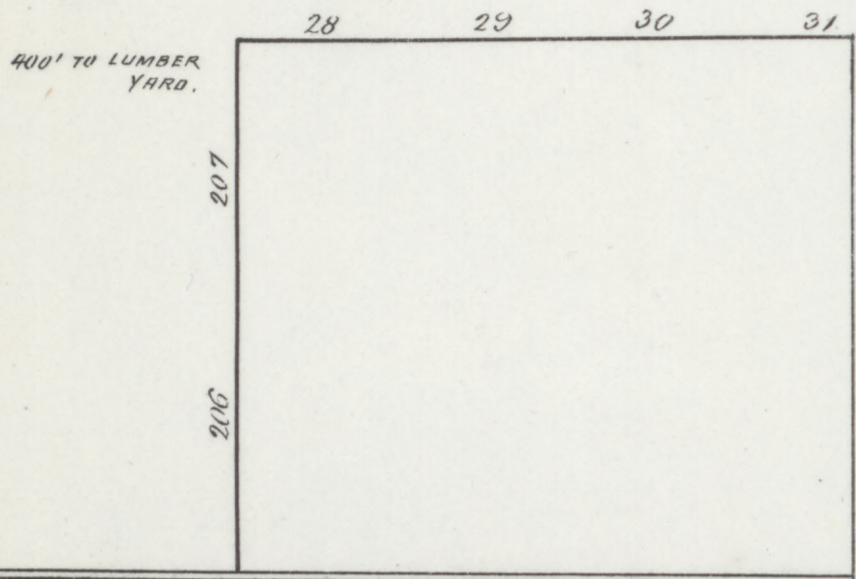


Map Division
Aug 12 '55
Library of Congress

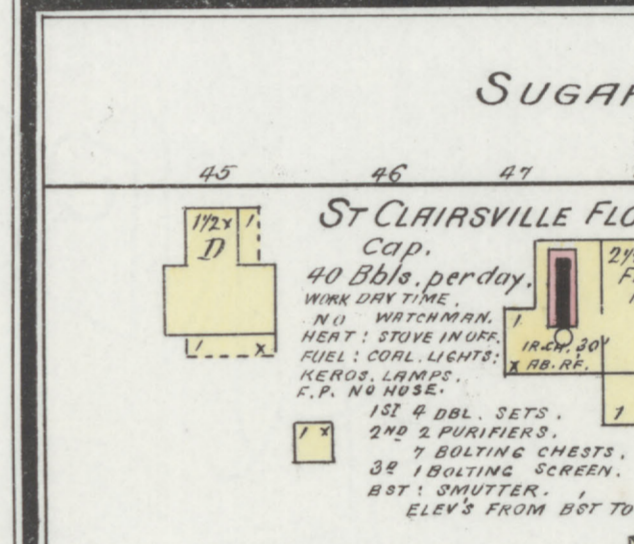
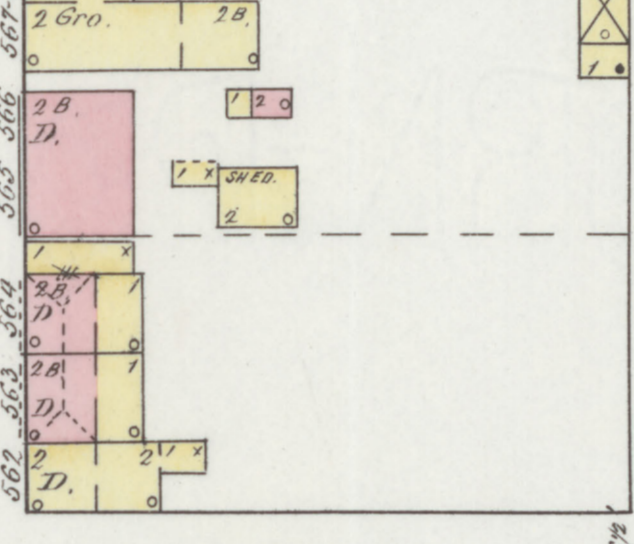
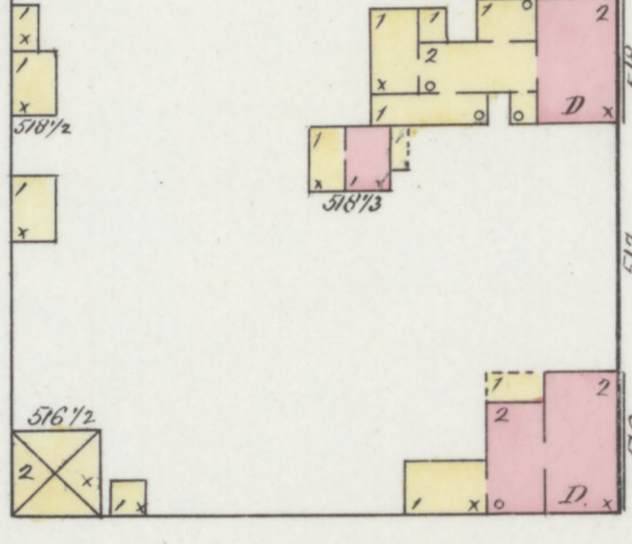
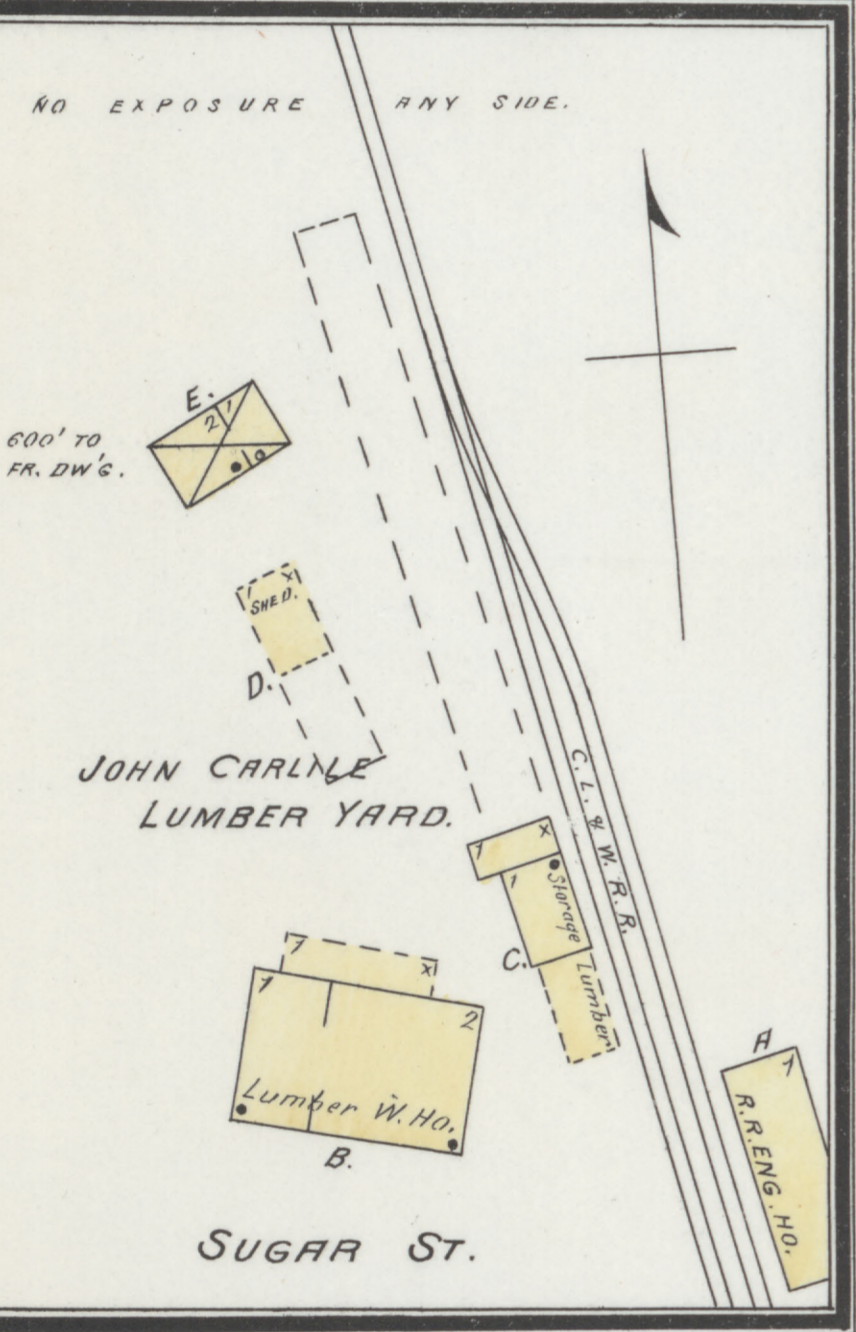
N. COMMONS



SUGAR



ABOUT 600' TO FLOUR MILL
SEE BELOW.

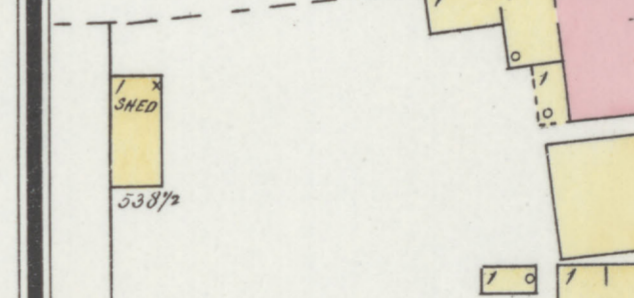
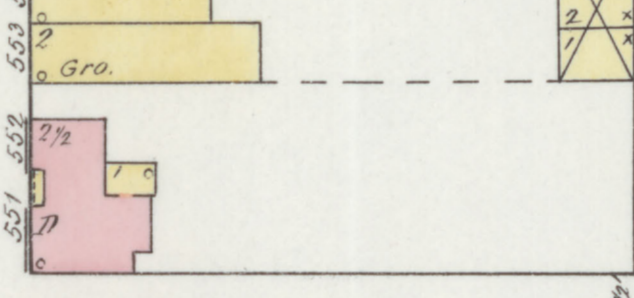
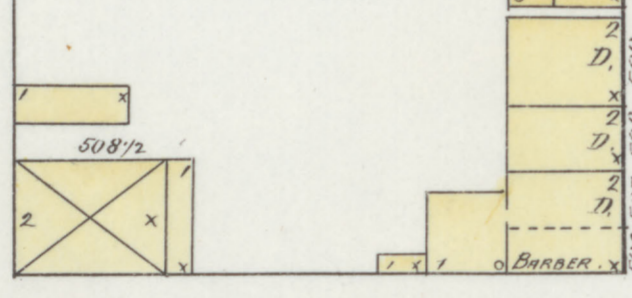
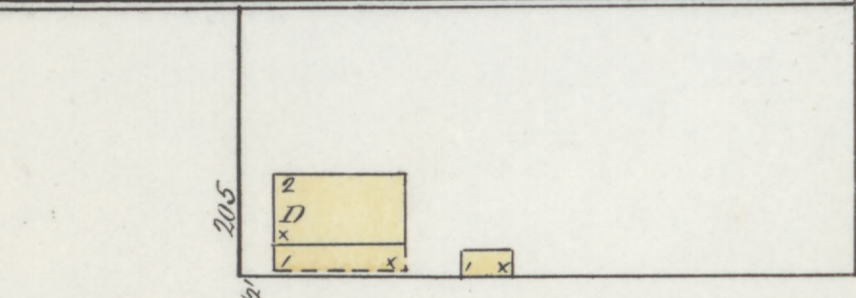
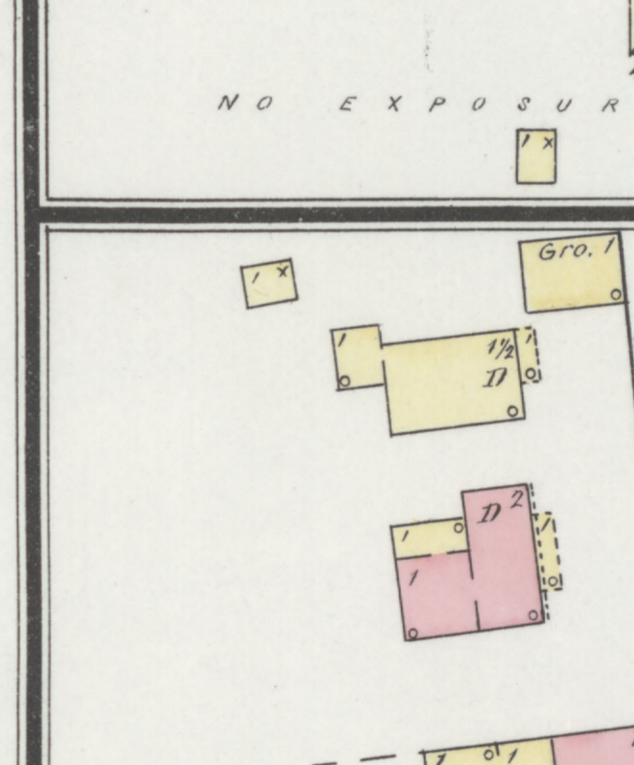
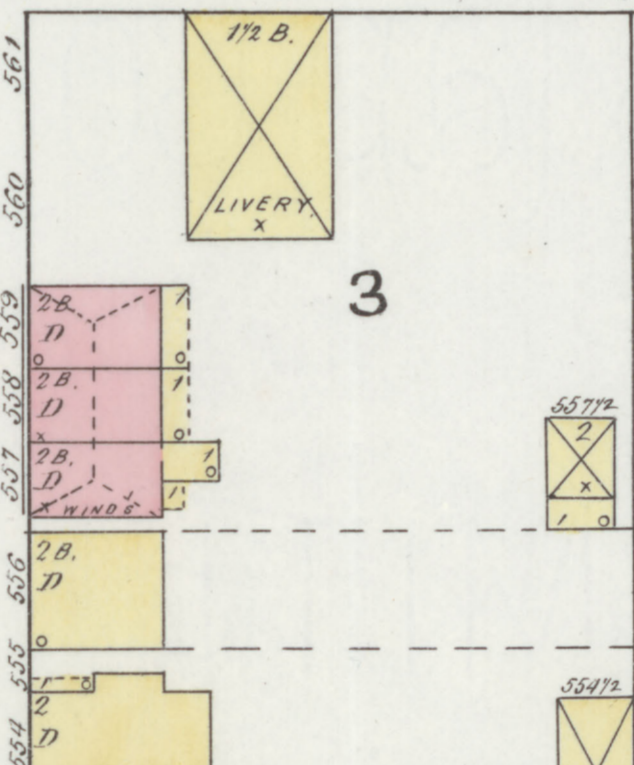
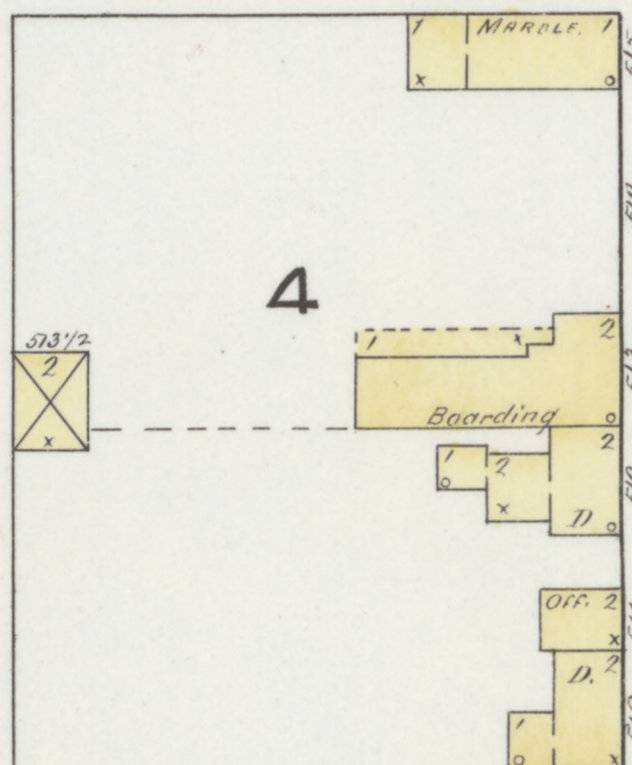


SUGAR ST.

ST. CLAIRSVILLE FLOUR MILL.
Cap. 2 1/2 B. FLOUR MILL.
40 Bbls. per day.
WINDMILL.
NO WATCHMAN.
HEAT: STOVE INGR.
FUEL: COAL LIGHTS.
KEROSE. LAMPS.
F.P. NO HOUSE.
12 1/2 DBL. SETS.
2ND 2 PURIFIERS.
7 BULTING CHESTS.
30 7 BULTING SCREENS.
BOT: SMUTTER.
ELEV'S FROM BOT TO 3RD.

NO EXPOSURE ANY SIDE.

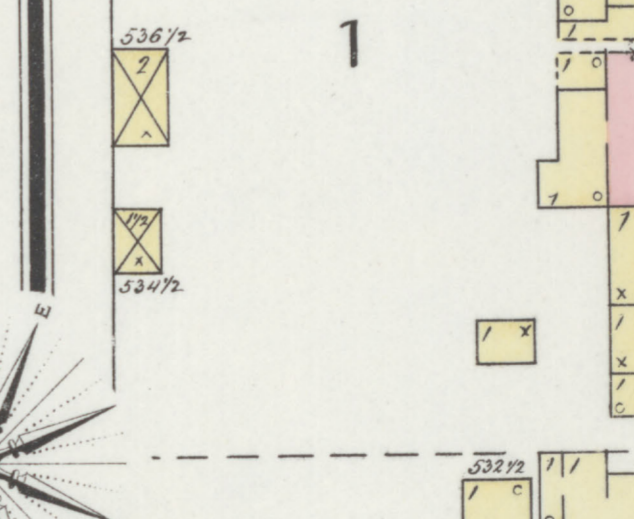
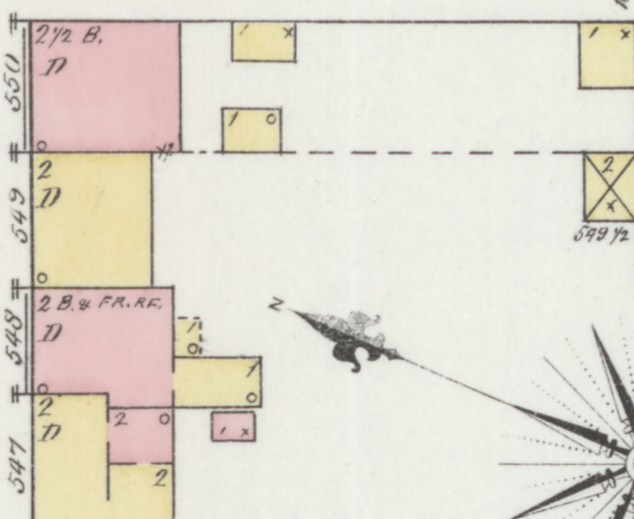
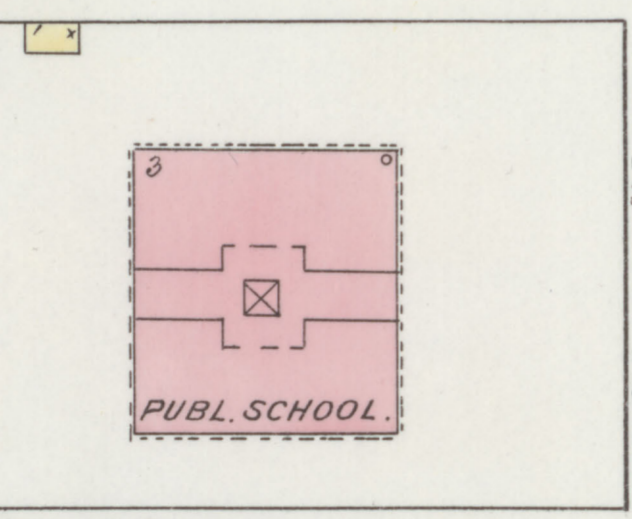
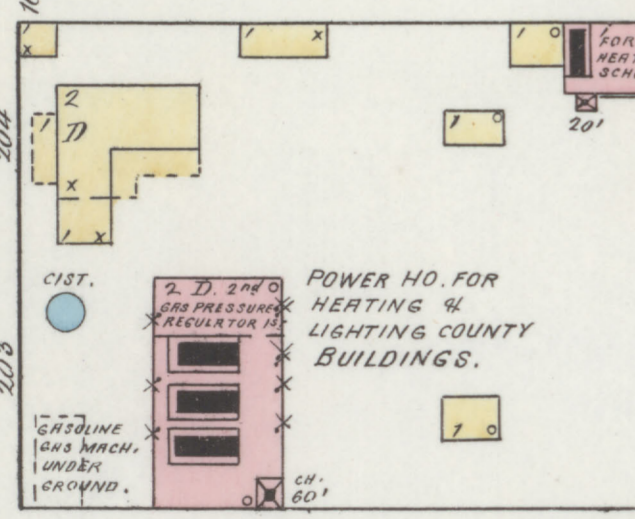
MAIN



66'

MAIN

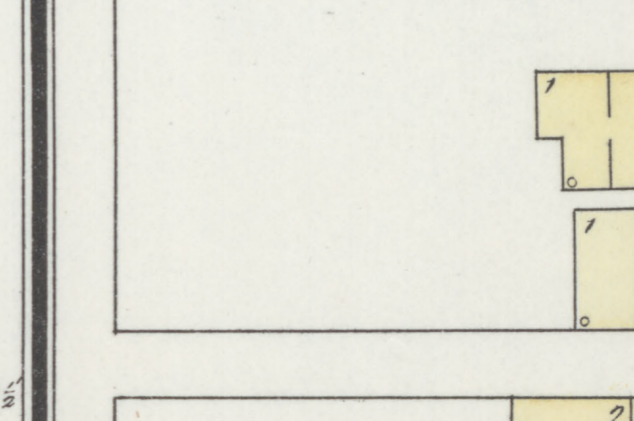
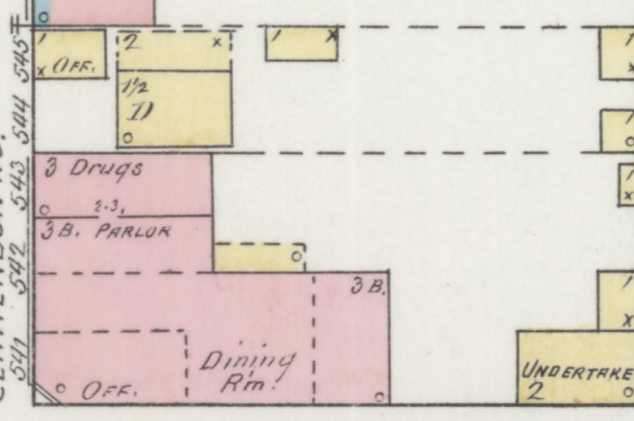
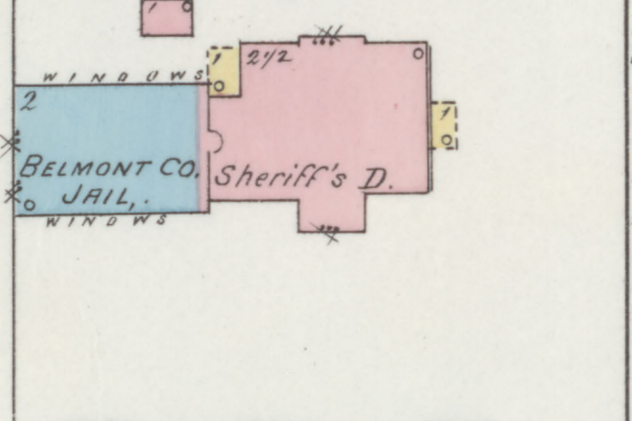
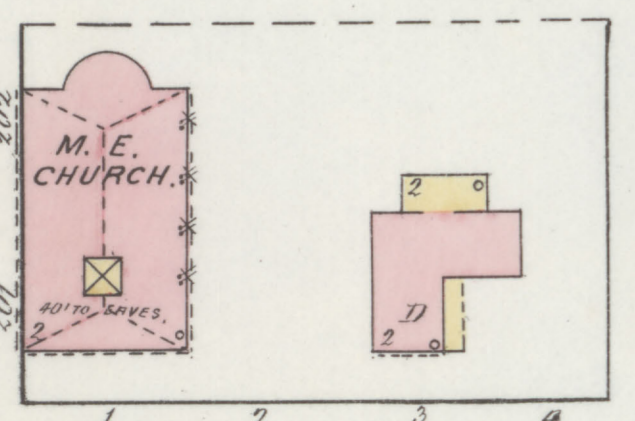
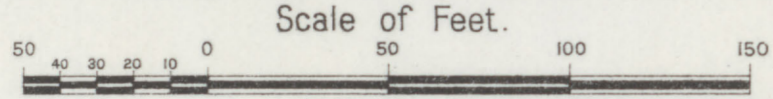
N. COMMONS



66'

MAIN

Scale of Feet.



66'

MAIN

MAIN CROSS OR MARKET